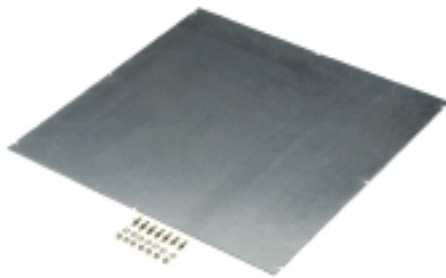


**MP TBF 60/60****Weidmüller Interface GmbH & Co. KG**

Klingenbergstraße 26

D-32758 Detmold

Germany

[www.weidmueller.com](http://www.weidmueller.com)**Similar to illustration**

The enclosures of the TBF series are made of extremely tough glass fibre-reinforced polyester. These enclosures are ideal for applications that call for low weight coupled with high shock resistance. The weather-resistant TBF enclosures are designed for a wide range of applications. Together with their comprehensive range of accessories, they provide universal solutions for accommodating built-in items such as regulators, measuring instruments, valves and other equipment.

**Features:**

- 9 sizes in 2 versions, with grey and transparent lids
- Cover with nylon screws
- Fixing holes outside the sealed area
- Thread for fitting to terminal rails and mounting plates
- Comprehensive accessories
- Weidmüller can manufacture and supply this enclosure to match customer specifications, fitted with all necessary terminals and cable glands.

**General ordering data**

Version	TBF (polyester empty enclosure), Mounting plate, Mounting plate, Height: 550 mm, Width: 555 mm, Depth: 2 mm, Material: Sheet steel, galvanized, galvanized, silver
Order No.	<a href="#">9502920000</a>
Type	MP TBF 60/60
GTIN (EAN)	4032248032334
Qty.	1 pc(s).

**MP TBF 60/60****Weidmüller Interface GmbH & Co. KG**

Klingenbergstraße 26

D-32758 Detmold

Germany

[www.weidmueller.com](http://www.weidmueller.com)**Technical data****Dimensions and weights**

Depth	2 mm	Depth (inches)	0.079 inch
Height	550 mm	Height (inches)	21.653 inch
Width	555 mm	Width (inches)	21.85 inch
Net weight	4,697 g		

**General information**

Material	Sheet steel, galvanized	Material thickness	2 mm
Surface finish	galvanized	Type of fixing	when screwed in

**Classifications**

ETIM 6.0	EC000213	ETIM 7.0	EC000213
ETIM 8.0	EC000213	ETIM 9.0	EC000213
ECLASS 9.0	27-40-06-39	ECLASS 9.1	27-18-92-90
ECLASS 10.0	27-40-06-39	ECLASS 11.0	27-40-06-39
ECLASS 12.0	27-40-06-39	ECLASS 13.0	27-40-06-39

**Approvals**

ROHS	Conform
------	---------

**Downloads**

Engineering Data	<a href="#">CAD data – STEP</a>
Catalogues	<a href="#">Catalogues in PDF-format</a>
Brochures	