

**LIF 1,5M638 R****Weidmüller Interface GmbH & Co. KG**

Klingenbergstraße 26

D-32758 Detmold

Germany

[www.weidmueller.com](http://www.weidmueller.com)**Insulated tab connector made from PVC with copper sleeve**

- Commercially available designs
- Not soldered
- With conical entry funnel

**General ordering data**

Version	cable lug, terminal end, Insulated cable connector, 0.5 mm <sup>2</sup> - 1.5 mm <sup>2</sup> , red
Order No.	<a href="#">9200580000</a>
Type	LIF 1,5M638 R
GTIN (EAN)	4032248410422
Qty.	100 pc(s).

**LIF 1,5M638 R****Weidmüller Interface GmbH & Co. KG**

Klingenbergstraße 26

D-32758 Detmold

Germany

[www.weidmueller.com](http://www.weidmueller.com)**Technical data****Dimensions and weights**

Depth	5.8 mm	Depth (inches)	0.228 inch
Width	20.8 mm	Width (inches)	0.819 inch
Net weight	0.81 g		

**Technical data**

Description of article	Cable lug connector 0.5-1.5 mm <sup>2</sup>
------------------------	--

**Connectors**

Conductor cross-section, max.	1.5 mm <sup>2</sup>	Conductor cross-section, min.	0.5 mm <sup>2</sup>
Dimension	6.3 x 0.8 mm	Dimension (flat blade connector)	6.3 x 0.8 mm
Insulation	Available	Material/plastic	PVC
Plastic collar diameter (D)	4 mm	Plastic collar length (b)	10 mm
Plug-in density (d3)	0.8 mm	Plug-in width (d2)	6.3 mm

**Classifications**

ETIM 6.0	EC000516	ETIM 7.0	EC000516
ETIM 8.0	EC000516	ETIM 9.0	EC000516
ECLASS 9.0	27-44-03-92	ECLASS 9.1	27-40-02-90
ECLASS 10.0	27-44-03-92	ECLASS 11.0	27-44-03-92
ECLASS 12.0	27-44-03-92	ECLASS 13.0	27-44-03-92

**Approvals**

ROHS	Conform
------	---------

**Downloads**

Catalogues	<a href="#">Catalogues in PDF-format</a>
Brochures	

### LIF 1,5M638 R

**Weidmüller Interface GmbH & Co. KG**

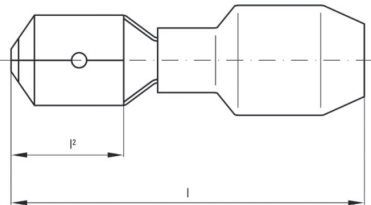
Klingenbergstraße 26

D-32758 Detmold

Germany

[www.weidmueller.com](http://www.weidmueller.com)

## Drawings



**LIF 1,5M638 R****Weidmüller Interface GmbH & Co. KG**

Klingenbergstraße 26

D-32758 Detmold

Germany

[www.weidmueller.com](http://www.weidmueller.com)**Accessories****Crimping tools****Crimping tools for insulated connectors**

cable lugs, terminal pins, parallel and serial connectors, plug-in connectors

- Ratchet guarantees precise crimping
- Release option in the event of incorrect operation
- With stop for exact positioning of the contacts.
- Tested to DIN EN 60352 part 2

**General ordering data**

Type	HTI 15	Version
Order No.	<a href="#">9014400000</a>	Pressing tool, Tool for insulated cable connectors, 0.5mm <sup>2</sup> , 2.5mm <sup>2</sup> ,
GTIN (EAN)	4008190159412	Double crimp
Qty.	1 pc(s).	
Type	CTI 6 G	Version
Order No.	<a href="#">9202850000</a>	Pressing tool, Tool for insulated cable connectors, 0.5mm <sup>2</sup> , 6mm <sup>2</sup> ,
GTIN (EAN)	4032248517855	Oval crimping, Parallel crimp
Qty.	1 pc(s).	
Type	CTI 6	Version
Order No.	<a href="#">9006120000</a>	Pressing tool, Crimping tool for contacts, 0.5mm <sup>2</sup> , 6mm <sup>2</sup> , Oval
GTIN (EAN)	4008190044527	crimping, Double crimp
Qty.	1 pc(s).	