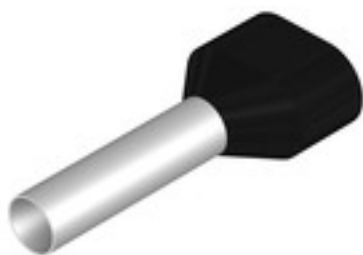


**H6,0/29 ZH SW****Weidmüller Interface GmbH & Co. KG**

Klingenbergstraße 26

D-32758 Detmold

Germany

[www.weidmueller.com](http://www.weidmueller.com)

- supplied loose in poly-bag
- Weidmüller colour code
- DIN colour code
- other colour code

**General ordering data**

Version	Wire-end ferrule, Twin wire-end ferrule, 24 mm, 18 mm, black
Order No.	<a href="#">9037330000</a>
Type	H6,0/29 ZH SW
GTIN (EAN)	4008190492809
Qty.	100 pc(s).
Packaging	loose

## H6,0/29 ZH SW

Weidmüller Interface GmbH &amp; Co. KG

Klingenbergstraße 26

D-32758 Detmold

Germany

www.weidmueller.com

## Technical data

## Dimensions and weights

Net weight	0.76 g
------------	--------

## Technical data

Description of article	Twin wire end ferrule, black	Version	Twin wire-end ferrule
------------------------	------------------------------	---------	-----------------------

## Wire-end ferrules

Collar height (A)	11.4 mm	Collar width (B)	6.2 mm
Colour code	Weidmueller	Conductor cross-section	6 mm <sup>2</sup>
Contact surface diameter (D1)	4.5 mm	Contact surface length (L2)	18 mm
L1 in mm	29 mm	Metal sleeve thickness (S1)	0.2 mm
Plastic collar thickness (S2)	0.5 mm	Stripping length	24 mm
Wire connection cross section AWG, max.	AWG 10		

## Classifications

ETIM 6.0	EC000005	ETIM 7.0	EC000005
ETIM 8.0	EC000005	ETIM 9.0	EC000005
ECLASS 9.0	27-40-02-01	ECLASS 9.1	27-40-02-01
ECLASS 10.0	27-40-02-01	ECLASS 11.0	27-40-02-01
ECLASS 12.0	27-40-02-01	ECLASS 13.0	27-40-02-01

## Approvals

Approvals



ROHS	Conform
UL File Number Search	UL Website
Certificate no. (cULus)	E499744

## Downloads

Engineering Data	<a href="#">CAD data – STEP</a>
Engineering Data	<a href="#">Zuken E3.S</a>
User Documentation	<a href="#">Technical information - EN</a> <a href="#">Technical information - DE</a>
Catalogues	<a href="#">Catalogues in PDF-format</a>
Brochures	

**H6,0/29 ZH SW****Weidmüller Interface GmbH & Co. KG**

Klingenbergstraße 26

D-32758 Detmold

Germany

[www.weidmueller.com](http://www.weidmueller.com)**Drawings****Drawing**