

ACT20X-2SDI-2HDO-S
Weidmüller Interface GmbH & Co. KG

Klingenbergstraße 26

D-32758 Detmold

Germany

www.weidmueller.com

Product image, Similar to illustration


The ACT20X-SDI-HDO/2SDI-2HDO valve control modules are controlled from the safe zone on the input side by the switching signals (NPN, PNP) and provide digital outputs to switch actuators (solenoids, alarms) in Ex zone 0. Depending on the module, the output current is limited for the ignition protection groups IIC/IIB to 35 mA or 60 mA (only one channel). Integrated alarm contacts issue an alert in the event of a malfunction; this makes troubleshooting easier and increases system availability. The rail mounted disconnect-switch amplifiers are optionally available in one- or two-channel versions. With 11 mm width per channel, the devices need little space in the electrical cabinet.

General ordering data

Version	EX signal isolating converter, Safe-input: relay, Ex-output: Opto module, 2-channel, Output current : max. 35 mA
Order No.	8965420000
Type	ACT20X-2SDI-2HDO-S
GTIN (EAN)	4032248785032
Qty.	1 pc(s).

ACT20X-2SDI-2HDO-S**Weidmüller Interface GmbH & Co. KG**

Klingenbergstraße 26

D-32758 Detmold

Germany

www.weidmueller.com

Technical data**Dimensions and weights**

Depth	113.6 mm	Depth (inches)	4.472 inch
Height	119.2 mm	Height (inches)	4.693 inch
Width	22.5 mm	Width (inches)	0.886 inch
Net weight	180 g		

Temperatures

Storage temperature	-20 °C...85 °C	Operating temperature	-20 °C...60 °C
Humidity	0...95 % (no condensation)		

Probability of failure

SIL PAPER	SIL certificate	SIL in compliance with IEC 61508	2
MTBF	176 a		

Assembling

Mounting position	horizontal or vertical	Rail	TS 35
Type of mounting	Rail, Snap mounting support rail		

Input

Input resistance, voltage		Input voltage	≤ 28 V DC, Trigger level low: ≤ 2.0 V DC (NPN), ≤ 8.0 V DC (PNP), Trigger level high: ≥ 4.0 V DC (NPN), ≥ 10.0 V DC (PNP)
	3.5 kΩ		
Number of inputs		Sensor	NAMUR sensor, according to EN60947-5-6, switch with or without RS, RP
	2		
Type	NPN, PNP transistor, switching signal [input safe-side valve component]		

Output

Output current	max. 35 mA		
Output values	depending on terminal assignment: 12.5 V @ 35 mA / 13.5 V @ 35 mA / 14.5 V @ 35 mA		
Output values	Current	max.	35 mA
	Voltage	min.	12.5 V
	Current	max.	35 mA
	Voltage	min.	13.5 V
	Current	max.	35 mA
	Voltage	min.	14.5 V
Output values	depending on terminal assignment		
Residual ripple (current loop)	<40 mV _{eff}		
Type	intrinsically safe circuit, digital, output = input, direct or inverse (configurable)		

Digital output

Max. switching frequency	≤ 5 kHz
--------------------------	---------

ACT20X-2SDI-2HDO-S**Weidmüller Interface GmbH & Co. KG**

Klingenbergstraße 26

D-32758 Detmold

Germany

www.weidmueller.com

Technical data**Alarm output**

Alarm function	No supply voltage, Device error	Continuous current	$\leq 0.5 \text{ A AC} / 0.3 \text{ A DC}$ (safe zone), $\leq 0.5 \text{ A AC} / 1 \text{ A DC}$ (zone 2)
Nominal switching voltage	$\leq 125 \text{ V AC} / 110 \text{ V DC}$ (safe area) $\leq 32 \text{ V AC} / 32 \text{ V DC}$ (zone 2)	Power rating	$\leq 62.5 \text{ VA} / 32 \text{ W}$ (safe area) $\leq 16 \text{ VA} / 32 \text{ W}$ (Zone 2)
Type	Status relay, 1 NC (voltage-free)		

General specifications

Configuration	With FDT/DTM software, Requires configuration adapter 8978580000 CBX200 USB	Humidity	0...95 % (no condensation)
Operating altitude	$\leq 2000 \text{ m}$	Power consumption	$\leq 3.1 \text{ W}$
Protection degree	IP20	Step response time	10 ms
Type of connection	Screw connection	Voltage supply	19.2...31.2 V DC

Insulation coordination

EMC standards	EN 61326-1	Insulation voltage	2.6 kV (input / output)
Rated voltage	300 V	Standards	EN 61010-1

Data for Ex applications (ATEX)

Current I_0	$\leq 110 \text{ mA}$	Installation location	Device installed in safe area, zone 2
Marking	II (1) G [Ex ia Ga] IIC/IIB/IIA, II (1) D [Ex ia Da] IIIC, I (M1) [Ex ia Ma] I	Power P_0	$\leq 0.95 \text{ W}$
Voltage U_0	28 V DC		

Safety-related basic specifications

Description of the "safe state"	de-energized (relay output)	Device type	B
Diagnostic test interval	10 s	T_{proof}	5 a
Total failure rate for safe detected failures (λ_{SD})	0 FIT	Hardware fault tolerance (HFT)	0
Safety category	SIL 2	Safe Failure Fraction (SFF)	91 %
Mean Time To Repair (MTTR)	24 h	Total failure rate for safe undetected failures (λ_{SU})	477 FIT
Total failure rate for dangerous detected failures (λ_{DD})	61 FIT	Total failure rate for dangerous undetected failures (λ_{DU})	43 FIT
Probability of outage PFH	$4.3 \times 10^{-8} \text{ h}^{-1}$	Demand mode	High
Demand rate	1,000 s	Demand response time	<10 ms (opto output)

Safety-related specifications Low demand mode

Average Probability of Failure on Demand (PFD_{avg})	2.73×10^{-4} ($T_{\text{proof}} = 1$ year), 4.52×10^{-4} ($T_{\text{proof}} = 2$ years), 9.89×10^{-4} ($T_{\text{proof}} = 5$ years)
------------------------------------------------------------------------	--------------------------------------------------------------------------------------------------------------------------------------------------------------------

ACT20X-2SDI-2HDO-S**Weidmüller Interface GmbH & Co. KG**

Klingenbergstraße 26

D-32758 Detmold

Germany

www.weidmueller.com**Technical data****Connection data**

Type of connection	Screw connection	Tightening torque, min.	0.4 Nm
Tightening torque, max.	0.6 Nm	Clamping range, rated connection	2.5 mm ²
Clamping range, min.	0.25 mm ²	Clamping range, max.	2.5 mm ²
Wire connection cross section AWG, min.	AWG 26	Wire connection cross section AWG, max.	AWG 12

Guarantee

Time interval	3 years
---------------	---------

Classifications

ETIM 6.0	EC002653	ETIM 7.0	EC002653
ETIM 8.0	EC002653	ETIM 9.0	EC002653
ETIM 10.0	EC002653	ECLASS 9.0	27-21-01-20
ECLASS 9.1	27-21-01-20	ECLASS 10.0	27-21-01-20
ECLASS 11.0	27-21-01-20	ECLASS 12.0	27-21-01-20
ECLASS 13.0	27-21-01-20	ECLASS 14.0	27-21-01-20
ECLASS 15.0	27-21-01-20		

ACT20X-2SDI-2HDO-S

Weidmüller Interface GmbH & Co. KG
Klingenbergstraße 26
D-32758 Detmold
Germany

www.weidmueller.com

Technical data

Tender specification sheets

Long specification

Ex valve control modules, 35 mA ignition protection group IIC, 2 channel
2-channel valve control modules in 22.5 mm width with external power supply, to control valves in Ex zones 0,1,2 from the safe zone.
The module comes with full four-way, 2.6 kV separation.
On the input side, NPN/ PNP switching sensors can be connected.
On the output side, there are optionally three 35 mA driver steps per channel for ignition protection group IIC with a minimum driver voltage of 12.5 V/13.5 V or 14.5 V available.
An additional alarm contact ("a" contact) reports status and error messages
The module can be configured using standard FDT/DTM software.

Add-on housing for TS35 DIN rail installation

Dimensions: L/W/H
119.2/ 22.5/ 113.6
Screw connection/ nominal cross-section
2.5 mm²
Protection degree:
IP20 input/ channel NPN, PNP switch signal
max. 28 VD-

C Out-
put Ex / channel
I_{max} 35 mA @ ignition protection group IIC
U with load min. 12.5 V / min. 13.5 V / min. 14.5 V U
without load min. 24 V Alarm output relay 1 NO contact
250 VAC / 30 VDC @ 2A safe zone
32 VAC @ 0.5 A / 32 VDC @ 1 A zone 2Auxiliary power 19 to 31.2 VDCPower loss ap-

Short specification

Ex valve control modules, 35 mA ignition protection group IIC, 2 channel
2-channel valve control modules in 22.5 mm width with external power supply, to control valves in Ex

Creation date July 3, 2025 10:33:40 PM EST

Ambient temperature range
-20 °C to +60 °C

Catalogue status 21.06.2025 / We reserve the right to make technical changes.

Secure isolation EN 61010

ACT20X-2SDI-2HDO-S**Weidmüller Interface GmbH & Co. KG**

Klingenbergstraße 26

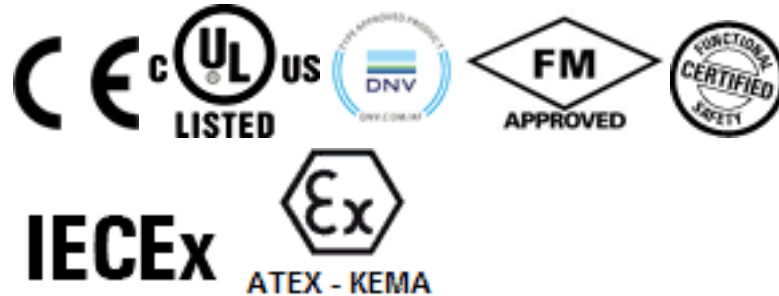
D-32758 Detmold

Germany

www.weidmueller.com

Technical data**Approvals**

Approvals



Approvals	DNVGL;
Approvals MAMID	https://mdcop.weidmueller.com/mediadelivery/rendition/900_319222/-T1z1mm-S800/ https://mdcop.weidmueller.com/mediadelivery/rendition/900_319228/-T1z1mm-S800/ https://mdcop.weidmueller.com/mediadelivery/rendition/900_319234/-T1z1mm-S800/ https://mdcop.weidmueller.com/mediadelivery/rendition/900_319237/-T1z1mm-S800/ https://mdcop.weidmueller.com/mediadelivery/rendition/900_319238/-T1z1mm-S800/ https://mdcop.weidmueller.com/mediadelivery/rendition/900_319240/-T1z1mm-S800/ https://mdcop.weidmueller.com/mediadelivery/rendition/900_319243/-T1z1mm-S800/
ROHS	Conform
UL File Number Search	UL Website
Certificate no. (cULus)	E337701

Environmental Product Compliance

RoHS Compliance Status	Compliant with exemption
RoHS Exemption (if applicable/known)	7a, 7cl
REACH SVHC	Lead 7439-92-1
SCIP	2f6dd957-421a-46db-a0c2-cf1609156924

Downloads

Approval/Certificate/Document of Conformity	Certification SIL Certification DNV GL Certification ATEX Certification IECEX Certification UL Certification UL for canada Declaration of Conformity
Engineering Data	CAD data – STEP
Software	WI-Manager, DTM-Library for online installation Release notes for Weidmueller FDT-DTM Software version
User Documentation	Instruction sheet Safety Manual for SIL application Handbuch ACT20X- Serie, deutsch Manual ACT20X- series, english 20210120 Security Advisory - WI-Manager affected by MundM Software fdtCONTAINER vulnerability
Catalogues	Catalogues in PDF-format
Brochures	

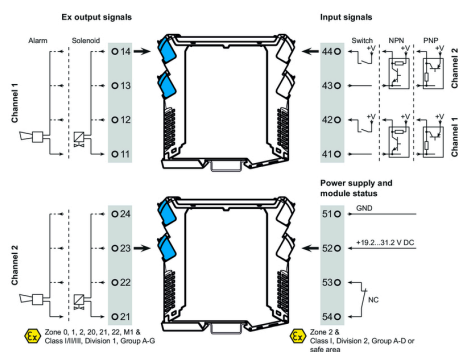
ACT20X-2SDI-2HDO-S

Weidmüller Interface GmbH & Co. KG
Klingenbergstraße 26
D-32758 Detmold
Germany

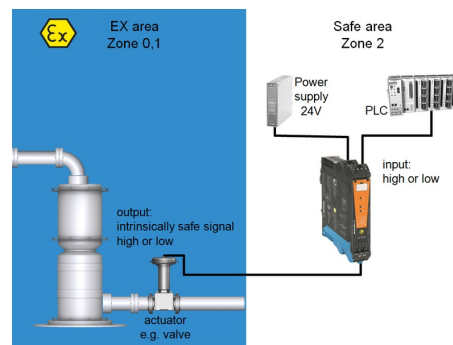
www.weidmueller.com

Drawings

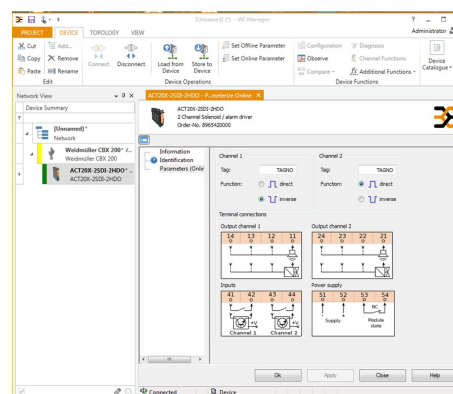
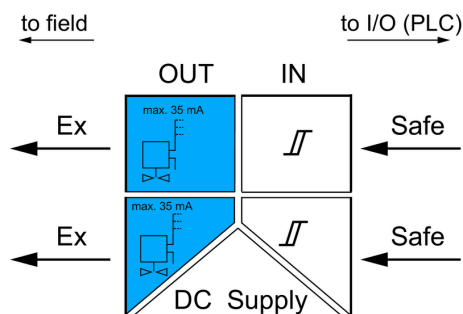
Connection diagram



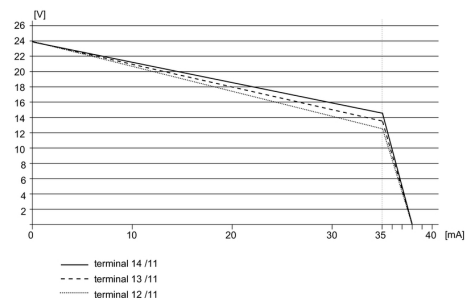
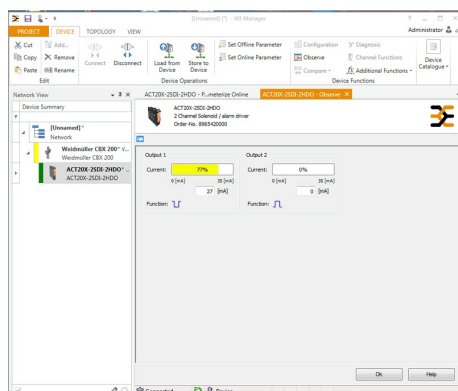
Application



Block diagram



Derating curve



8965400009505.eps

screenshot of "observe" with FDT2 / DTM software

ACT20X-2SDI-2HDO-S**Weidmüller Interface GmbH & Co. KG**

Klingenbergstraße 26

D-32758 Detmold

Germany

www.weidmueller.com**Accessories****Blank**

ESG is the tried-and-tested marker in MultiCard format for use on many well-known electrical devices. The result is high-quality device marking with a high-contrast appearance.

Various types are available for devices from manufacturers like Siemens, ABB, Beckhoff etc.

Advantages at a glance:

- Tags for universal usage, self-adhesive or clip-on tags, depending on type
- For aligned equipment, e.g. circuit breakers, we supply ESG markers for clipping onto tag rails
- Individual laser-quality printing according to specifications

For custom printing: Please send us a file of our labeling software M-Print PRO or M-Print PRO Online (without installation) for your labeling specifications.

General ordering data

Type	ESG 8/13.5/43.3 SAI AU	Version
Order No.	1912130000	ESG, Device markers x 13.5 mm, PA 66, Colour: Transparent,
GTIN (EAN)	4032248541164	pluggable
Qty.	5 pc(s).	

Configuration interfaces**General ordering data**

Type	CBX200 USB
Order No.	8978580000
GTIN (EAN)	4032248813759
Qty.	1 pc(s).

ACT20X-2SDI-2HDO-S**Weidmüller Interface GmbH & Co. KG**

Klingenbergstraße 26

D-32758 Detmold

Germany

www.weidmueller.com**Accessories****Blank**

ESG is the tried-and-tested marker in MultiCard format for use on many well-known electrical devices. The result is high-quality device marking with a high-contrast appearance.

Various types are available for devices from manufacturers like Siemens, ABB, Beckhoff etc.

Advantages at a glance:

- Tags for universal usage, self-adhesive or clip-on tags, depending on type
- For aligned equipment, e.g. circuit breakers, we supply ESG markers for clipping onto tag rails
- Individual laser-quality printing according to specifications

For custom printing: Please send us a file of our labeling software M-Print PRO or M-Print PRO Online (without installation) for your labeling specifications.

General ordering data

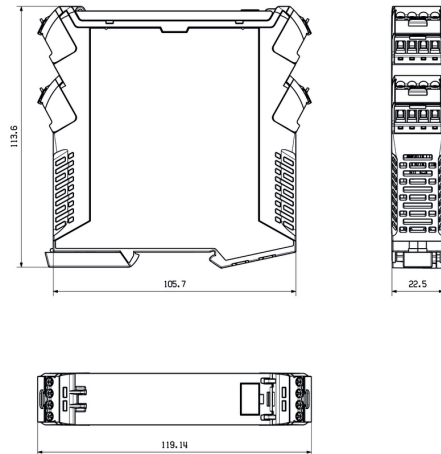
Type	ESG 6.6/20 BHZ 5.00/04	Version
Order No.	1082540000	ESG, Device markers x 20 mm, PA 66, Colour: white, pluggable
GTIN (EAN)	4032248845439	
Qty.	200 pc(s).	

ACT20X-2SDI-2HDO-S

Weidmüller Interface GmbH & Co. KG
Klingenbergstraße 26
D-32758 Detmold
Germany

www.weidmueller.com

Drawings



Derating curve



Removable terminals with coding