

WAS6 TTA EX

Weidmüller Interface GmbH & Co. KG

Klingenbergstraße 26

D-32758 Detmold

Germany

www.weidmueller.com

Similar to illustration



WAS/WAZ6 TTA is a universal signal converter and trip amplifier that can be configured on the PC. Combines the functions of isolation, transmission, linearisation and trip amplification in a single module.

These exceptional characteristics and outstanding configurability combine to make the TTA truly unique.

The TTA functions with stability and precision under a wide range of voltages and ambient temperatures. It is compatible with all standard sensor types.

- Universal input signals: temperature signals such as resistance thermometer, thermocouple, potentiometer, frequency transmitter, DC voltage signals and current signals
- Loop-powered or passive input
- Wide-range power supply: 18 – 264 V AC/DC
- User-defined linearization
- Inputs and outputs can be configured on PC
- Combined analogue and relay output
- Ambient temperature range: -40 °C ...70 °C

The CBX200 USB interface is used to connect to the PC. The WAS/WAZ6 TTA is also offered as an option with ATEX Zone 2 and UL C1D2 approvals.

General ordering data

Version	Input : EX, universal U, I, R,9, Output : I/U universal, 2 x relays
Order No.	8964310000
Type	WAS6 TTA EX
GTIN (EAN)	4032248782277
Qty.	1 pc(s).
Delivery status	This article will no longer be available in the future.
Available until	2023-12-30
Alternative product	1481970000

WAS6 TTA EX

Weidmüller Interface GmbH & Co. KG

Klingenbergstraße 26

D-32758 Detmold

Germany

www.weidmueller.com

Technical data

Dimensions and weights

Depth	112.4 mm	Depth (inches)	4.425 inch
Width	45 mm	Width (inches)	1.772 inch
Length	100 mm	Length (inches)	3.937 inch
Net weight	265 g		

Temperatures

Storage temperature	-40 °C...85 °C	Operating temperature	0 °C...70 °C
Humidity at operating temperature	0...95 % (no condensation)	Humidity	5...95 %, no condensation

Probability of failure

SIL in compliance with IEC 61508	None	MTTF	138 a
----------------------------------	------	------	-------

Input

Input current	-20...+50 mA (min. interval 0.4 mA)	Input frequency	adjustable, 2 Hz...100 kHz
Input voltage	-200...500 mV (min. 4 mV span), -20...50 V DC (min. 0.5 V span)	Number of inputs	1
Potentiometer	10...50 Ω, 50...100 Ω, 100...200 Ω, 200...400 Ω, 400...800 Ω, 800 Ω...2 kΩ, 2...6.5 kΩ, 6.5...100 Ω	Resistance	10 Ω...5 kΩ
Sensor	Thermocouples: B, E, J, K, L, N, R, S, T (IEC 60584), PT100, PT1000, (EN 60571) Ni100, Ni1000, (JIS1604), Cu10, Cu25, Cu50, Cu100 (DIN 43760) 2-/3-/4-wire	Sensor supply	24 V DC / 22 mA
Temperature input range	Configurable, B: +100...+1820 °C, E: -270...+1000 °C, J: -270...+1200 °C, K: -150...+1372 °C, L: +100...+900 °C, N: -180...+1300 °C, R: -50...+1768 °C, S: -50...+1768 °C, T: -270...+400 °C, U: -200...+600 °C, User defined		

Output

Load impedance current	≤ 600 Ω, @ max 23mA
------------------------	---------------------

WAS6 TTA EX

Weidmüller Interface GmbH & Co. KG

Klingenbergstraße 26

D-32758 Detmold

Germany

www.weidmueller.com

Technical data

Output (digital)

Alarm function	Top and bottom limit values, window range, Over-temperature, Alarm mode: delay, switch on or switch on/off, Holding function can be activated, Delayed 0...4200 s	Continuous current	2 A
Max. switching voltage, AC	0 V	Number of digital outputs	2
Rated switching current	0.1 A	Type	2 x 1 CO contact (hard gold-plated), Process alarms (4x) with hysteresis, with alarm delay (configurable) 0...180 s

Output (analogue)

Load resistance current	<700 Ω	Load resistance voltage	> 10 k Ω @ 0...10 V / > 20 k Ω @ -10...+10 V
Number of analogue outputs	1	Output current	adjustable between 0 and 20 mA (min. span of 5 mA)
Output voltage	adjustable between -10...+10 V (min. span 2.5 V)	Signal output	direct or inverted
Transmit function	Linear, $x^{1/2}$, $x^{3/2}$, $x^{5/2}$ or user-defined curve (101 points)		

General data

Accuracy	<0.1 % span (DC, RTD); 0.2 % span (or 1 °C) + CJ failure	Configuration	Using free Windows software, TTA Set Software, Requires configuration adapter 8978580000 CBX200 USB
Long-term drift	0	Power consumption	<3.5 W
Step response time	50 ms...1 sec (RTD, mV inputs), 110 ms...1 sec (V, mA inputs)	Temperature coefficient	<0.1 % / K (DC, RTD); <0.1 % FSR / K + CJ error 0.07 °C/K (thermocouples)
Voltage supply	24...240 V AC/DC; 24...36 V AC / 24...50 V DC (ATEX Zone 2)		

Insulation coordination

EMC standards	EN 55011, EN 61000-6	Impulse withstand voltage	6 kV
Insulation voltage	2.5 kV	Pollution severity	2
Rated voltage	300 V	Surge voltage category	III

Data for Ex applications (ATEX)

Marking	II 3 G Ex nA nC IIC T4 Gc
---------	---------------------------

Connection data

Type of connection	Screw connection	Stripping length, rated connection	7 mm
Tightening torque, min.	0.4 Nm	Tightening torque, max.	0.5 Nm
Clamping range, rated connection	2.5 mm ²	Clamping range, min.	0.5 mm ²
Clamping range, max.	2.5 mm ²		

Creation date April 27, 2024 5:36:52 AM CEST

WAS6 TTA EX**Weidmüller Interface GmbH & Co. KG**

Klingenbergstraße 26

D-32758 Detmold

Germany

www.weidmueller.com**Technical data****Classifications**

ETIM 6.0	EC002653	ETIM 7.0	EC002653
ETIM 8.0	EC002653	ETIM 9.0	EC002653
ECLASS 9.0	27-21-01-20	ECLASS 9.1	27-21-01-20
ECLASS 10.0	27-21-01-20	ECLASS 11.0	27-21-01-20
ECLASS 12.0	27-21-01-20	ECLASS 13.0	27-21-01-20

WAS6 TTA EX

Weidmüller Interface GmbH & Co. KG

Klingenbergstraße 26

D-32758 Detmold

Germany

www.weidmueller.com

Technical data

Tender specification sheets

Long specification

Universal measurement isolating converters and trip amplifiers, for Ex zone 2 applications; can be configured with PC

Universal measurement isolating converters and trip amplifiers in 45 mm width with external supply for voltage and sensors, for transmitting and isolating analogue DC current -20 to 50 mA, voltages -200 to 500 mV/ -20 to 50 V, 2-/3-/4-wire RTD, resistors, thermocouples according to IEC 584 and frequencies up to 100 kHz(2- / 3-wire sensors).

Two switching outputs (CO contacts) are available on the output side for alarms.

Analogue DC voltage (-10...+10 V) and current outputs (0...20 mA) are available on the output side.

The component can be configured with a PC using the proprietary T-TA-Set software.

Add-on housing for TS35 DIN rail installation

Dimensions: L/W/H 100/ 45/ 112.4 mm

Screw connection / nominal cross-section

2.5 mm²

Protection degree: IP20 Input

-20...50 mA

-200...500

mV / -10...+10 V

PT100, PT1000,

Ni100, Ni1000,

Cu10/25/50/100

2-/3-/4-wire

Resistance 10 Ohm to 5 kOhm/ potentiometer 100 Ohm to 100 kOhm

Thermocouple types B, E, J, K, N, R, S, T

Frequencies 2 Hz...100 kHz (2-/3-wire sensors)

Sensor supply 24 VDC / 22 mA

Output analogue 0...20 mA / adjustable

Short specification

WAS6 TTA EX

Weidmüller Interface GmbH & Co. KG

Klingenbergstraße 26

D-32758 Detmold

Germany

www.weidmueller.com

Technical data

Environmental Product Compliance

REACH SVHC	Lead 7439-92-1
SCIP	c2a21576-d875-4548-ae68-5e7f85ddf0c7

Important note

Product information

WAS/WAZ6 TTA is a universal signal converter and trip amplifier that can be configured on the PC. Combines the functions of isolation, transmission, linearisation and trip amplification in a single module. These exceptional characteristics and outstanding configurability combine to make the TTA truly unique. The TTA functions with stability and precision under a wide range of voltages and ambient temperatures. It is compatible with all standard sensor types.

- Universal input signals: temperature signals such as resistance thermometer, thermocouple, potentiometer, frequency transmitter, DC voltage signals and current signals
- Loop-powered or passive input
- Wide-range power supply: 18 – 264 V AC/DC
- User-defined linearization
- Inputs and outputs can be configured on PC
- Combined analogue and relay output
- Ambient temperature range: -40 °C ... 70 °C

The CBX200 USB interface is used to connect to the PC.

The WAS/WAZ6 TTA is also offered as an option with ATEX Zone 2 and UL C1D2 approvals.

Approvals

Approvals



ROHS	Conform
UL File Number Search	UL Website
Certificate no. (cULus)	E141197
Certificate no. (cULusEX)	E223527

Downloads

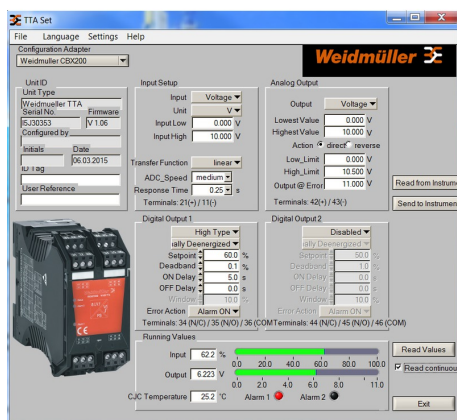
Approval/Certificate/Document of Conformity	Application notes – ATEX certification Application notes – DNV GL Certificate Declaration of Conformity
Engineering Data	CAD data – STEP
Software	Runtime Software – Install_TTASet_V107.zip
User Documentation	Device description – Manual english, deutsch, france Device description – Instruction sheet
Catalogues	Catalogues in PDF-format
Brochures	

WAS6 TTA EX

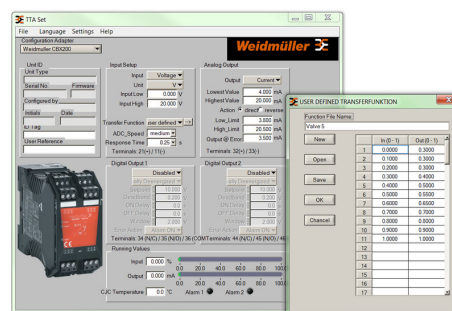
Weidmüller Interface GmbH & Co. KG
Klingenbergstraße 26
D-32758 Detmold
Germany

www.weidmueller.com

Drawings



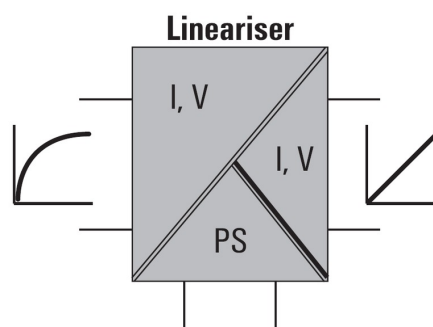
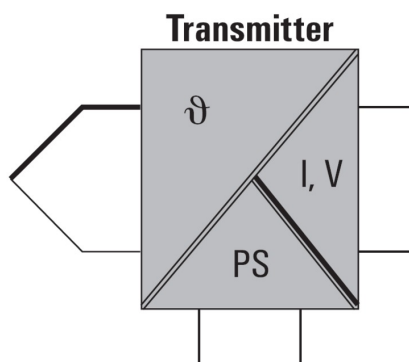
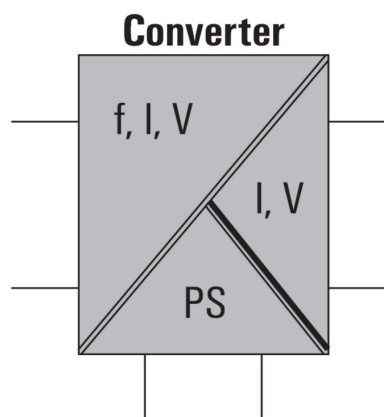
Screenshot of TTA Set software



example of user defined transfer function for assigning customized output values



connection to your PC



WAS6 TTA EX

Weidmüller Interface GmbH & Co. KG

Klingenbergstraße 26

D-32758 Detmold

Germany

www.weidmueller.com

Accessories

Configuration interfaces



General ordering data

Type	CBX200 USB
Order No.	8978580000
GTIN (EAN)	4032248813759
Qty.	1 pc(s).

WAS6 TTA EX

Weidmüller Interface GmbH & Co. KG
Klingenbergstraße 26
D-32758 Detmold
Germany

www.weidmueller.com

Drawings

