

IE-XR-RJ45/RJ45-2**Weidmüller Interface GmbH & Co. KG**

Klingenbergstraße 26

D-32758 Detmold

Germany

www.weidmueller.com

IE plug-in connectors, IP20, for copper and fibre optic cables

General ordering data

Version	Mounting flange, Cat.6A / Class E _A (ISO/IEC 11801 2010), IP20
Order No.	8952950000
Type	IE-XR-RJ45/RJ45-2
GTIN (EAN)	4032248744329
Qty.	24 pc(s).

IE-XR-RJ45/RJ45-2

Weidmüller Interface GmbH & Co. KG

Klingenbergstraße 26

D-32758 Detmold

Germany

www.weidmueller.com

Technical data

Dimensions and weights

Net weight	21.333 g
------------	----------

Temperatures

Operating temperature	-40 °C...70 °C
-----------------------	----------------

General data

Housing main material	Zinc diecast	Category	Cat.6 _A / Class E _A (ISO/IEC 11801 2010)
Shielding	360°; shield contact	Protection degree	IP20
Insertion force	≤ 30 N	Plugging cycles	750

Electrical properties

Contact resistance	≤ 20 mΩ	Current-carrying capacity at 50 °C	1 A
Dielectric strength, contact / contact	≥ 1000 V AC/DC	Dielectric strength, contact / shield	≥ 1500 V AC/DC
PoE / PoE+	conforming to IEEE 802.3at		

General standards

Connector standard	IEC 60603-7-5
--------------------	---------------

Classifications

ETIM 6.0	EC001121	ETIM 7.0	EC001121
ETIM 8.0	EC001121	ETIM 9.0	EC001121
ECLASS 9.0	27-44-03-90	ECLASS 9.1	27-44-03-90
ECLASS 10.0	27-44-03-90	ECLASS 11.0	27-44-03-90
ECLASS 12.0	27-44-03-90	ECLASS 13.0	27-44-03-90

Approvals

ROHS	Conform
------	---------

Downloads

Engineering Data	CAD data – STEP
User Documentation	MAN IE GUIDE DE MAN IE GUIDE EN
Catalogues	Catalogues in PDF-format
Brochures	FL FIELDWIRING EN PI PROFINET CABLING EN PI PROFINET CABLING EN

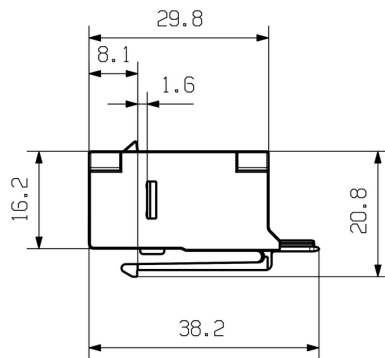
IE-XR-RJ45/RJ45-2

Weidmüller Interface GmbH & Co. KG
Klingenbergstraße 26
D-32758 Detmold
Germany

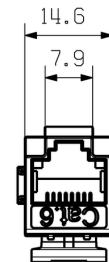
www.weidmueller.com

Drawings

Dimensioned drawing



Dimensioned drawing



Installation cut-out

