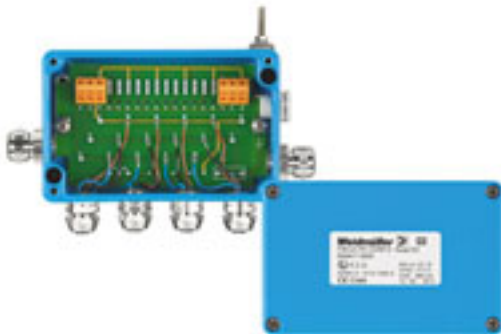


**FBCON PA CG/M12 4WAY EX****Weidmüller Interface GmbH & Co. KG**

Klingenbergstraße 26

D-32758 Detmold

Germany

[www.weidmueller.com](http://www.weidmueller.com)

For applications in hazardous areas, PROFIBUS PA Ex junction boxes are available as 1-way, 2-way, 4-way, and 8-way distributors.

EMC cable glands, protection class IP66 and a wide operating temperature range safely protect your connections in harsh environments.

**Functionality**

- EMC cable glands for trunk and spurs
- M12 connector for spurs
- External earthing stud
- Protection class IP66
- Aluminium versions
- Profibus PA compatible

Note: The use of FBCon products with aluminum enclosures and / or M12 connectors is not recommended in strongly saline environments.

**General ordering data**

Version	Standard distributor for Ex applications EEx(ia), 4-way distributor EEx, IP66
Order No.	<a href="#">8564170000</a>
Type	FBCON PA CG/M12 4WAY EX
GTIN (EAN)	4032248238545
Qty.	1 pc(s).

## FBCON PA CG/M12 4WAY EX

Weidmüller Interface GmbH &amp; Co. KG

Klingenbergstraße 26

D-32758 Detmold

Germany

www.weidmueller.com

## Technical data

## Dimensions and weights

Height	37 mm	Height (inches)	1.457 inch
Width	80 mm	Width (inches)	3.15 inch
Length	125 mm	Length (inches)	4.921 inch
Net weight	652 g		

## Temperatures

Storage temperature	-40 °C...80 °C	Ambient temperature	-40 °C...80 °C
Operating temperature	-40 °C...80 °C		

## Technical data

Bus system	Profibus-PA, Foundation Fieldbus	Cable entry	Brass cable gland, Branch line M12
Conductor O.D., max.	9.5 mm	Conductor O.D., min.	5.5 mm
Connection type PE	M12 spur line	Contact carrier material	Brass
Contact material	CuZnAu	Design of housing	With pressure compensation element
Housing main material	Aluminium, AlSi12	Number of contact sockets	4
Pollution severity	2	Protection degree	IP66
Type of distribution	4-way distributor EEx	Type of mounting	surface-mounted, Front mounting

## Classifications

ETIM 6.0	EC001604	ETIM 7.0	EC001604
ETIM 8.0	EC001604	ETIM 9.0	EC001604
ECLASS 9.0	27-24-26-08	ECLASS 9.1	27-24-26-08
ECLASS 10.0	27-24-26-08	ECLASS 11.0	27-24-26-08
ECLASS 12.0	27-44-01-11	ECLASS 13.0	27-44-01-11

## Environmental Product Compliance

REACH SVHC	Lead 7439-92-1
SCIP	3a5f5913-76fc-4ff5-8563-4463f80bbe02

## Approvals

Approvals



ROHS	Conform
UL File Number Search	UL Website
Certificate no. (cULus)	E141197

## FBCON PA CG/M12 4WAY EX

**Weidmüller Interface GmbH & Co. KG**  
Klingenbergstraße 26  
D-32758 Detmold  
Germany

[www.weidmueller.com](http://www.weidmueller.com)

# Technical data

## Downloads

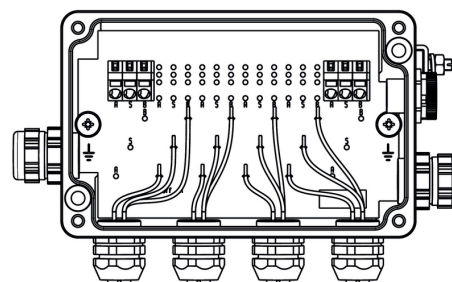
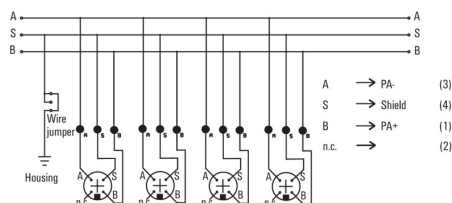
Approval/Certificate/Document of Conformity	<a href="#">Declaration of Conformity</a>
Product Change Notification	<a href="#">20220208 Technical change to FBCon field distributors (passive, with aluminum housings)</a>
Software	<a href="#">Runtime Software – WI-Segment-Calculator</a>
User Documentation	<a href="#">Instruction sheet</a> <a href="#">Quick start guide – assembly instruction german / english</a> <a href="#">Quick start guide – Application-Guide-Planning and installing Fieldbus networks-using-FBCon_english_deutsch</a>
Catalogues	<a href="#">Catalogues in PDF-format</a>
Brochures	

## FBCON PA CG/M12 4WAY EX

**Weidmüller Interface GmbH & Co. KG**  
Klingenbergstraße 26  
D-32758 Detmold  
Germany

[www.weidmueller.com](http://www.weidmueller.com)

## Drawings

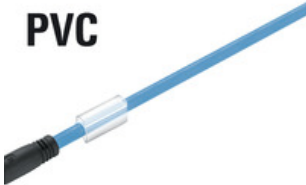


**FBCON PA CG/M12 4WAY EX****Weidmüller Interface GmbH & Co. KG**

Klingenbergstraße 26

D-32758 Detmold

Germany

[www.weidmueller.com](http://www.weidmueller.com)**Accessories****PVC/PE blue (FBCEX)****PVC**

The most reliable way of achieving connections between two I/O slaves or between the control and one I/O subscriber is by way of pre-assembled cables. The line of cables covers PROFIBUS, CANopen, DeviceNet™, EtherCAT and Ethernet.

**General ordering data**

Type	FBCEX PA M12 M 2M	Version
Order No.	<a href="#">1785150200</a>	Bus line, One end without connector, M12, Number of poles: 2, 2 m,
GTIN (EAN)	4032248195022	pin, straight, Shielded: Yes, LED: No, Sheath material: PVC, Halogen:
Qty.	1 pc(s).	Yes