

**MCZ OVP CL 24VDC 0,5A****Weidmüller Interface GmbH & Co. KG**

Klingenbergstraße 26

D-32758 Detmold

Germany

[www.weidmueller.com](http://www.weidmueller.com)

- Slimline overvoltage protection terminal with tension clamp connection
- 6 mm Slimline fine overvoltage protection
- fast wiring thanks to TS contact and tension clamp connections
- can be cross-connected

**General ordering data**

Version	Surge protection for instrumentation and control, Surge protection for measurement and control
Order No.	<a href="#">8448920000</a>
Type	MCZ OVP CL 24VDC 0,5A
GTIN (EAN)	4008190147396
Qty.	10 pc(s).

**MCZ OVP CL 24VDC 0,5A****Weidmüller Interface GmbH & Co. KG**

Klingenbergstraße 26

D-32758 Detmold

Germany

www.weidmueller.com

**Technical data****Dimensions and weights**

Depth	63.5 mm	Depth (inches)	2.5 inch
Height	91 mm	Height (inches)	3.583 inch
Width	6 mm	Width (inches)	0.236 inch
Net weight	23.1 g		

**Temperatures**

Storage temperature	-40 °C...85 °C	Operating temperature	-40 °C...60
---------------------	----------------	-----------------------	-------------

**Rated data UL**

Certificate No. (UL)	E311081
----------------------	---------

**General data**

Colour	black	Design	Terminal
Height with TS 35	63.5 mm	Protection degree	IP20
Rail	TS 35	Segment	Measurement - Monitoring - Setting
UL 94 flammability rating	V-0	Version	Surge protection for measurement and control

**Insulation coordination acc. to EN 50178**

Pollution severity	2	Surge voltage category	III
--------------------	---	------------------------	-----

**Rated data IEC / EN**

Discharge current, $I_{imp}$ (10/350 $\mu$ s)	1 kA	Discharge current, max. (8/20 $\mu$ s)	5 kA
Fuse	0.5 A	Inductance L and L1	75 $\mu$ H
Lightning test current $I_{imp}$ (10/350 $\mu$ s)	1 kA	Limiting frequency (-3 dB) at load resistance	500 kHz 240 $\Omega$
Load resistance (for limiting frequency)	240 $\Omega$	Max. continuous voltage, $U_c$ (AC)	28 V
Operating current, $I_{max.}$	0.5 A	Operating voltage	28 V
Protection level on output side Wire-PE 1kV/ $\mu$ s, typically	40 V	Protection level on output side Wire-PE 8/20 $\mu$ s, typically	65 V
Protection level on output side Wire-wire 1 kV/ $\mu$ s, typically	40 V	Protection level on output side Wire-wire 8/20 $\mu$ s, typically	65 V
Rated current $I_N$	0.5 A	Rated voltage (DC)	24 V
Rated voltage (DC), max.	28 V	Requirements category acc. to IEC 61643-21	D1
Response time	$\leq 100$ ps	Standards	HART-compatible
Voltage type	DC	Volume resistance	2.50 $\Omega$

## MCZ OVP CL 24VDC 0,5A

Weidmüller Interface GmbH &amp; Co. KG

Klingenbergstraße 26

D-32758 Detmold

Germany

www.weidmueller.com

## Technical data

## Connection data

Cross-section	1.5 mm <sup>2</sup>	Stripping length	8 mm
Wire connection method	Spring connection	Type of connection	Tension-clamp connection
Stripping length, rated connection	8 mm	Clamping range, rated connection	1.5 mm <sup>2</sup>
Clamping range, min.	0.5 mm <sup>2</sup>	Clamping range, max.	1.5 mm <sup>2</sup>
Wire connection cross section AWG, min.	AWG 26	Wire connection cross section AWG, max.	AWG 16
Wire cross-section, solid, min.	0.5 mm <sup>2</sup>	Wire cross-section, solid, max.	1.5 mm <sup>2</sup>
Wire cross-section, solid, min. (AWG)	AWG 26	Wire cross-section, solid, max. (AWG)	AWG 16
Wire connection cross section, finely stranded, min.	0.5 mm <sup>2</sup>	Wire connection cross section, finely stranded, max.	1.5 mm <sup>2</sup>
Wire cross-section, finely stranded, min. (AWG)	AWG 26	Wire cross-section, finely stranded, max. (AWG)	AWG 16
Wire connection cross-section, finely stranded with wire-end ferrules DIN 46228/4, min.	0.5 mm <sup>2</sup>	Wire connection cross-section, finely stranded with wire-end ferrules DIN 46228/4, max.	1.5 mm <sup>2</sup>
Conductor cross-section, flexible, AEH (DIN 46228-1), min.	0.5 mm <sup>2</sup>	Conductor cross-section, flexible, AEH (DIN 46228-1), max.	1.5 mm <sup>2</sup>
Blade size	0.6 x 3.5 mm		

## Classifications

ETIM 6.0	EC000943	ETIM 7.0	EC000943
ETIM 8.0	EC000943	ETIM 9.0	EC000943
ECLASS 9.0	27-13-08-07	ECLASS 9.1	27-13-08-07
ECLASS 10.0	27-13-08-07	ECLASS 11.0	27-13-08-07
ECLASS 12.0	27-17-90-90	ECLASS 13.0	27-17-90-90

## Environmental Product Compliance

REACH SVHC	Lead 7439-92-1
SCIP	c9db83e7-2b25-44e1-8d26-da64d426373f

## Approvals

Approvals



ROHS	Conform
UL File Number Search	UL Website
Certificate No. (UL)	E311081

## Downloads

Approval/Certificate/Document of Conformity	<a href="#">EU Konformitätserklärung / EU Declaration of Conformity</a>
Engineering Data	<a href="#">CAD data – STEP</a>
User Documentation	<a href="#">Beipackzettel / Instruction sheet</a>
Catalogues	<a href="#">Catalogues in PDF-format</a>
Brochures	

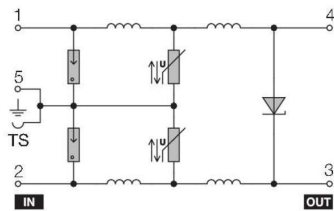
## MCZ OVP CL 24VDC 0,5A

**Weidmüller Interface GmbH & Co. KG**  
Klingenbergstraße 26  
D-32758 Detmold  
Germany

[www.weidmueller.com](http://www.weidmueller.com)

# Drawings

## Electric symbol



Circuit diagram

## MCZ OVP CL 24VDC 0,5A

Weidmüller Interface GmbH &amp; Co. KG

Klingenbergstraße 26

D-32758 Detmold

Germany

www.weidmueller.com

## Accessories

## Steel



Steel DIN rails are the most widespread on the market. Among metal DIN rails, they have the lowest shortcircuit protection, similar to stainless steel.

## General ordering data

Type	TS 35X7.5 2M/ST/ZN	Version
Order No.	<a href="#">0383400000</a>	Terminal rail, without slot, Accessories, 35 x 7.5 x 2000 mm, Steel,
GTIN (EAN)	4008190088026	galvanic zinc plated and passivated
Qty.	2 m	
Type	TS 35X15/2.3 2M/ST/ZN	Version
Order No.	<a href="#">0498000000</a>	Terminal rail, without slot, Accessories, 35 x 15 x 2000 mm, Steel,
GTIN (EAN)	4008190042493	galvanic zinc plated and passivated
Qty.	2 m	

## SAK-Series



Weidmüller's range of products includes end brackets that guarantee a permanent, reliable mounting on the terminal rail and prevent sliding. Versions with and without screws are available. The end brackets include marking options, also for group markers, and also a test plug holder.

## General ordering data

Type	EW 35	Version
Order No.	<a href="#">0383560000</a>	End bracket, Wemid, beige, Rail: TS 35, when screwed in
GTIN (EAN)	4008190181314	
Qty.	50 pc(s).	

**MCZ OVP CL 24VDC 0,5A****Weidmüller Interface GmbH & Co. KG**

Klingenbergstraße 26

D-32758 Detmold

Germany

[www.weidmueller.com](http://www.weidmueller.com)**Accessories****Slotted screwdriver**

VDE insulated slot-head screwdriver, SDI DIN 7437, ISO 2380/2, drive output acc. to DIN 5264, ISO 2380/1. SoftFinish grip

**General ordering data**

Type	SDIS 0.6X3.5X100	Version
Order No.	<a href="#">9008390000</a>	Screwdriver, Screwdriver
GTIN (EAN)	4032248056354	
Qty.	1 pc(s).	

**AP MCZ 1.5 - End plate**

Open miniature housing in modular terminal format with five tension clamp connections. A transparent hinged top plate can be used for labelling and provides access to potentiometer and status displays. Plug-in cross-connectors can be used to interconnect the three top connections. A cover plate for closing off the housing is also available.

**General ordering data**

Type	AP MCZ1.5 SW 1683	Version
Order No.	<a href="#">1046410000</a>	Small housing, OMNIMATE Housing - TERMINALBOX black, End plate,
GTIN (EAN)	4032248782246	Width: 1.5 mm
Qty.	50 pc(s).	