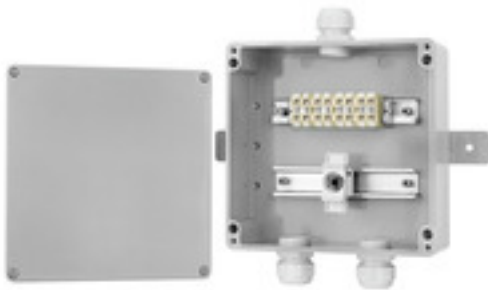


KLIPPON POK 252512 FH M25 E60**Weidmüller Interface GmbH & Co. KG**

Klingenbergstraße 26

D-32758 Detmold

Germany

www.weidmueller.com**Product image****Fire-resistant terminal boxes E30, E60 and E90**

Robust terminal box for safe power supply of emergency systems in case of fire, emergency lighting in underground, metro, railway and road tunnels up to a maximum of 90 minutes according to DIN 4102-04. The equipped enclosures of the Klippon® POK and Klippon® STB series are suitable wherever corrosion resistance, impact resistance and a high degree of protection is required.

Features:

- Available in a wide variety of designs on customer request
- Tested and approved according to DIN 4102-04 (E30, E60 and E90) - The exact details must be taken from the "Declaration of Manufacturer"
- High quality through the use of proven basic products of the Klippon® brand

General ordering data

Version	Klippon POK (polyester empty enclosure), Enclosures, Height: 250 mm, Width: 255 mm, Depth: 120 mm, Material: Glass fibre-reinforced polyester, untreated, Light Grey
Order No.	8000052636
Type	KLIPPON POK 252512 FH M25 E60
GTIN (EAN)	4064675362319
Qty.	1 pc(s).
Reference product	1305930000 0122800000 0236400000 9502610000 9502650000 0303000000 9502630000 9509510000 0445600000 2007170000 1909710000 1736250000 1772470000

KLIPPON POK 252512 FH M25 E60**Weidmüller Interface GmbH & Co. KG**

Klingenbergstraße 26

D-32758 Detmold

Germany

www.weidmueller.com

Technical data**Dimensions and weights**

Depth	120 mm	Depth (inches)	4.724 inch
Height	250 mm	Height (inches)	9.842 inch
Height of lowest version	120 mm	Width	255 mm
Width (inches)	10.039 inch	Mounting dimension - height	200 mm
Mounting dimension - width	235 mm	Net weight	4,743.57 g

Temperatures

Operating temperature	-20 °C...80 °C
-----------------------	----------------

horizontal assembly

SAKK 10	8	Fuse holder available	Yes
---------	---	-----------------------	-----

Housing

Drill holes side A	1 x M25	Drill holes side B	2 x M25
Material	Glass fibre-reinforced polyester		

Classifications

ETIM 6.0	EC002503	ETIM 7.0	EC002503
ETIM 8.0	EC002503	ETIM 9.0	EC002503
ECLASS 9.0	27-18-05-02	ECLASS 9.1	27-18-05-02
ECLASS 10.0	27-18-05-02	ECLASS 11.0	27-18-05-02
ECLASS 12.0	27-18-05-02	ECLASS 13.0	27-18-05-02

Environmental Product Compliance

REACH SVHC	Lead 7439-92-1
SCIP	1d28ada4-1634-4382-8635-45f6353a6574

Important note

Product information	The fire rating up to E60 acc. to DIN 4102-12 depends on concrete configurations / installations (details see "Declaration of Manufacturer" in "Downloads") The enclosure is used for functional integrity and serves as a distribution box for cables with 4 potentials.
---------------------	--

Downloads

Approval/Certificate/Document of Conformity	MPA NRW Certificate - fire rated assembled boxes acc. to DIN 4102-12 DoM DE PS2510 210414 001ISS00 - Fire Rated Boxes
Engineering Data	CAD data – STEP
Catalogues	Catalogues in PDF-format

KLIPPON POK 252512 FH M25 E60

Weidmüller Interface GmbH & Co. KG
Klingenbergstraße 26
D-32758 Detmold
Germany

www.weidmueller.com

Drawings

Similar to illustration

