

**ACT20P-VMR-3PH-ILP-H-P****Weidmüller Interface GmbH & Co. KG**

Klingenbergstraße 26

D-32758 Detmold

Germany

[www.weidmueller.com](http://www.weidmueller.com)**ACT20P: The flexible solution**

- Precise and highly functional signal converters
- Release levers simplify handling

**General ordering data**

Version	Limit value monitoring, Input : 180...500 V AC, Output : 2 x relays, Input: 3-phase voltage, Relay output
Order No.	<a href="#">7760054361</a>
Type	ACT20P-VMR-3PH-ILP-H-P
GTIN (EAN)	4050118559750
Qty.	1 pc(s).

**ACT20P-VMR-3PH-ILP-H-P****Weidmüller Interface GmbH & Co. KG**

Klingenbergstraße 26

D-32758 Detmold

Germany

www.weidmueller.com

**Technical data****Dimensions and weights**

Depth	114.3 mm	Depth (inches)	4.5 inch
Height	117 mm	Height (inches)	4.606 inch
Width	22.5 mm	Width (inches)	0.886 inch
Net weight	140 g		

**Temperatures**

Storage temperature	-40 °C...85 °C	Operating temperature	-20 °C...65 °C
Humidity at operating temperature	0...95 % (no condensation)	Humidity	5...85 % rel. humidity, no condensation

**Probability of failure**

SIL in compliance with IEC 61508	None
----------------------------------	------

**Input**

Input resistance, voltage	$\geq 1,8\text{M}\Omega$	Input voltage	180...500 VAC
Number of inputs	1	Type	3-phase or 3-phase plus zero conductor, AC voltage

**Output**

Number of outputs	2
-------------------	---

**Output (digital)**

Alarm function	Top and bottom limit values, window range, Holding function can be activated, Phase error, Phase sequence, Asymmetry, Alarm delay: 0...10 s	Hysteresis	5 % @ Phase asymmetry
Max. switching frequency	20 Hz	Max. switching voltage, AC	250 V
Max. switching voltage, DC	30 V	Number of digital outputs	2
Rated switching current	5 A	Switch-on delay	0...10 s, configurable
Switching thresholds	Adjustable, MIN = 50...100 % x $U_{\text{Rated input voltage}}$ (undervoltage alarm), MAX = 70...120 % x $U_{\text{Rated input voltage}}$ (overvoltage alarm)	Type	2 x 1 - or 1 x 2 changeover contact relay, Relay polarity can be inverted

**General data**

Accuracy	3 % * $U_{\text{rated voltage}}$	Configuration	DIP switch and potentiometer
Galvanic isolation	2-way isolator, between input/output, yes, between input/output/supply	Long-term drift	0.1 % / 10.000 h
Power consumption	$\leq 3\text{VA}$ , $<2\text{ W}$	Rail	TS 35
Repeat accuracy	2 % * $U_{\text{rated voltage}}$	Step response time	$\leq 100\text{ ms}$
Temperature coefficient	350 ppm/K	Voltage supply	supplied from voltage measurement inputs

## ACT20P-VMR-3PH-ILP-H-P

Weidmüller Interface GmbH &amp; Co. KG

Klingenbergstraße 26

D-32758 Detmold

Germany

www.weidmueller.com

## Technical data

## Insulation coordination

EMC standards	EN 61326-1	Galvanic isolation	2-way isolator, between input/output, yes, between input/output/supply
Impulse withstand voltage	6 kV (input - output), 4 kV (output 1 - output 2), 1.2/50 µs	Insulation voltage	2.5 kV (input / output)
Pollution severity	2	Rated voltage	600 VAC (input - output), 300 VAC (output 1 - output 2)
Surge voltage category	III	Test voltage	0.5 kV

## Connection data

Type of connection	PUSH IN	Tightening torque, min.	0.4 Nm
Tightening torque, max.	0.6 Nm	Clamping range, rated connection	2.5 mm <sup>2</sup>
Clamping range, min.	0.5 mm <sup>2</sup>	Clamping range, max.	2.5 mm <sup>2</sup>
Wire connection cross section AWG, min.	AWG 26	Wire connection cross section AWG, max.	AWG 14

## Classifications

ETIM 6.0	EC002654	ETIM 7.0	EC002654
ETIM 8.0	EC002654	ETIM 9.0	EC002654
ECLASS 9.0	27-21-01-22	ECLASS 9.1	27-21-01-22
ECLASS 10.0	27-21-01-22	ECLASS 11.0	27-21-01-22
ECLASS 12.0	27-21-01-22	ECLASS 13.0	27-21-01-22

## Environmental Product Compliance

REACH SVHC	Lead 7439-92-1
SCIP	2f6dd957-421a-46db-a0c2-cf1609156924

## Approvals

Approvals	
ROHS	Conform
UL File Number Search	UL Website
Certificate No. (cURus)	E469563

## Downloads

Approval/Certificate/Document of Conformity	<a href="#">Application notes – Declaration of Conformity</a>
Engineering Data	<a href="#">CAD data – STEP</a>
Software	<a href="#">DIP switch configuration tool</a>
User Documentation	<a href="#">Instruction sheet</a>
Catalogues	<a href="#">Catalogues in PDF-format</a>

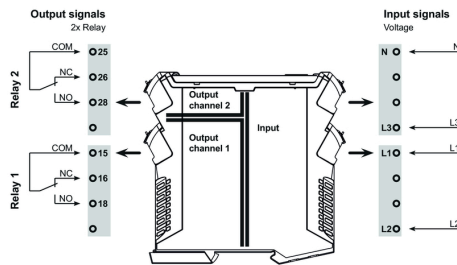
# ACT20P-VMR-3PH-ILP-H-P

**Weidmüller Interface GmbH & Co. KG**  
 Klingenbergstraße 26  
 D-32758 Detmold  
 Germany

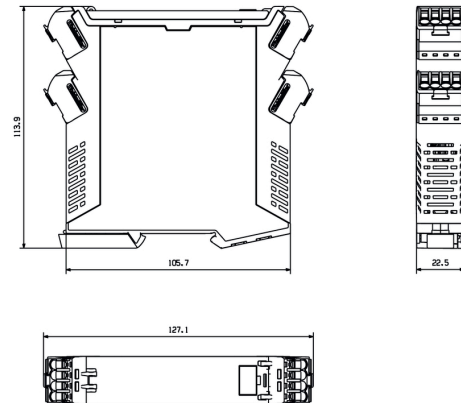
[www.weidmueller.com](http://www.weidmueller.com)

## Drawings

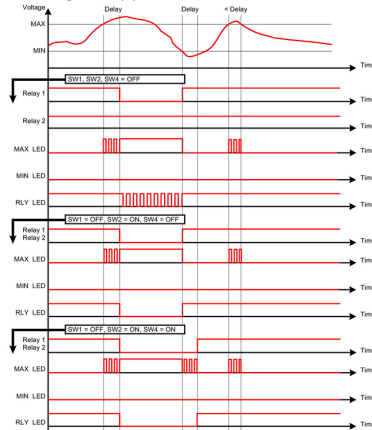
### Connection diagram



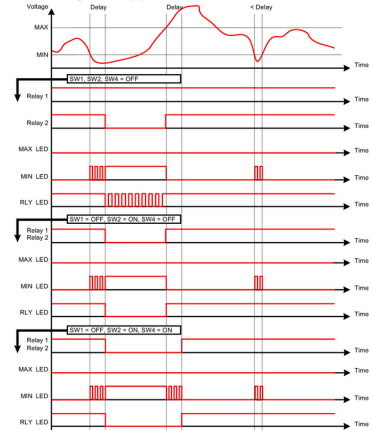
### Dimensioned drawing



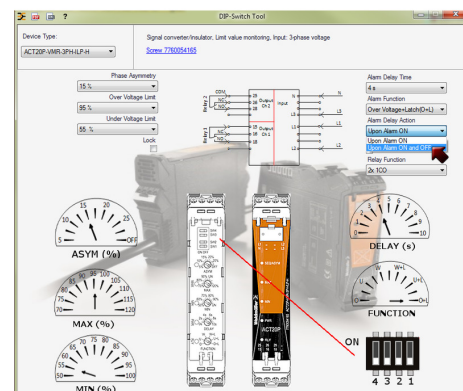
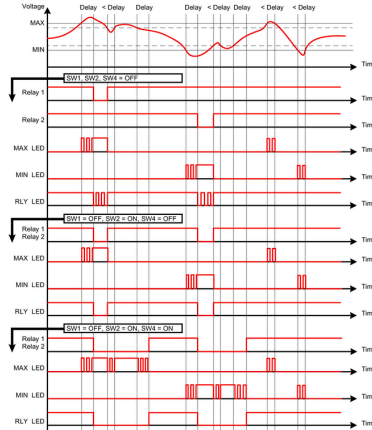
#### Overvoltage alarm (O)



#### Undervoltage alarm (U)



#### Window alarm (W)



example for DIP switch setting (with ACT20 tool)

## ACT20P-VMR-3PH-ILP-H-P

**Weidmüller Interface GmbH & Co. KG**  
Klingenbergstraße 26  
D-32758 Detmold  
Germany

[www.weidmueller.com](http://www.weidmueller.com)

# Drawings

