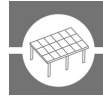


FUSEHOLDER WSFH 22X58 1K5V 80A**Weidmüller Interface GmbH & Co. KG**

Klingenbergstraße 26

D-32758 Detmold

Germany

www.weidmueller.com**Photovoltaic fuse holder for PV applications**

- For usage in photovoltaic DC combiner boxes up to 1500V
- DIN- rail mounted
- For use with cylindrical fuse links from 30A up to 80A of 22x58mm gPV

General ordering data

Version	Photovoltaics, Fuse holder, 1500 V, 22x58, Without LED
Order No.	4000003740
Type	FUSEHOLDER WSFH 22X58 1K5V 80A
GTIN (EAN)	8430243427135
Qty.	6 pc(s).

FUSEHOLDER WSFH 22X58 1K5V 80A

Weidmüller Interface GmbH & Co. KG

Klingenbergstraße 26

D-32758 Detmold

Germany

www.weidmueller.com

Technical data

Dimensions and weights

Depth	76.8 mm	Depth (inches)	3.024 inch
Height	126 mm	Height (inches)	4.961 inch
Width	35.6 mm	Width (inches)	1.402 inch
Net weight	100 g		

Temperatures

Continuous operating temp., min.	-50 °C	Continuous operating temp., max.	90 °C
----------------------------------	--------	----------------------------------	-------

Fuse holder connection

Number of connections	2	Stripping length	14 mm
Tightening torque, max.	2.8 Nm	Tightening torque, min.	2 Nm
Type of connection	Screw connection	Wire connection cross section AWG, max.	AWG 2
Wire connection cross section AWG, min.	AWG 17	Wire connection cross section, finely stranded, min.	1 mm ²
Wire connection cross section, finely stranded, max.	35 mm ²	Wire connection cross-section, finely stranded with wire-end ferrules DIN 46228/1, min.	1 mm ²
Wire connection cross-section, finely stranded with wire-end ferrules DIN 46228/1, max.	35 mm ²	Wire connection cross-section, finely stranded with wire-end ferrules DIN 46228/4, min.	1 mm ²
Wire connection cross-section, finely stranded with wire-end ferrules DIN 46228/4, max.	35 mm ²	Wire connection cross-section, solid core, min.	1 mm ²
Wire connection cross-section, solid core, max.	35 mm ²	Wire material	Copper

Fuse holder technical data

Type of mounting	TS 35	Cartridge fuse	22 x 58 mm
Colour	white	Display	Without LED
Fuse holder (cartridge holder)	Pivoting	Max. current	80 A
Number of potentials	1	Power dissipation, max.	12.5 W
Rail	TS 35	Rated impulse withstand voltage	6 kV
Surge voltage category	III		

Classifications

ETIM 6.0	EC000899	ETIM 7.0	EC000899
ETIM 8.0	EC000899	ETIM 9.0	EC000899
ECLASS 9.0	27-14-11-16	ECLASS 9.1	27-14-11-16
ECLASS 10.0	27-14-11-16	ECLASS 11.0	27-14-11-16
ECLASS 12.0	27-14-11-16	ECLASS 13.0	27-25-01-13

Downloads

Catalogues	Catalogues in PDF-format
------------	--

FUSEHOLDER WSFH 22X58 1K5V 80A

Weidmüller Interface GmbH & Co. KG

Klingenbergstraße 26

D-32758 Detmold

Germany

www.weidmueller.com

Accessories

22x58 gPV



General ordering data

Type	FUSE WSFL 22X58 40A 1K5 ...	Version
Order No.	4000003732	Photovoltaics, Cartridge fuse, 1500 V, 22x58, gPV, 40 A
GTIN (EAN)	8430243427142	
Qty.	10 pc(s).	
Type	FUSE WSFL 22X58 70A 1K5 ...	Version
Order No.	2873890000	Photovoltaics, Cartridge fuse, 1500 V, 22x58, gPV, 70 A
GTIN (EAN)	4064675647652	
Qty.	10 pc(s).	
Type	FUSE WSFL 22X58 50A 1K5 ...	Version
Order No.	4000003733	Photovoltaics, Cartridge fuse, 1500 V, 22x58, gPV, 50 A
GTIN (EAN)	8430243427159	
Qty.	10 pc(s).	
Type	FUSE WSFL 22X58 65A 1K5 ...	Version
Order No.	4000003734	Photovoltaics, Cartridge fuse, 1500 V, 22x58, gPV, 65 A
GTIN (EAN)	8430243427166	
Qty.	10 pc(s).	
Type	FUSE WSFL 22X58 35A 1K5 ...	Version
Order No.	2865970000	Photovoltaics, Cartridge fuse, 1500 V, 22x58, gPV, 35 A
GTIN (EAN)	4064675602415	
Qty.	10 pc(s).	
Type	FUSE WSFL 22X58 75A 1K5 ...	Version
Order No.	2870900000	Photovoltaics, Cartridge fuse, 1500 V, 22x58, gPV, 75 A
GTIN (EAN)	4064675636458	
Qty.	10 pc(s).	