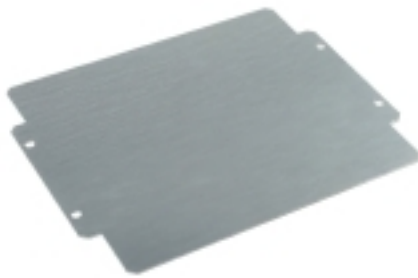


**MOPL K71 STAHL****Weidmüller Interface GmbH & Co. KG**

Klingenbergstraße 26

D-32758 Detmold

Germany

[www.weidmueller.com](http://www.weidmueller.com)**Similar to illustration**

The system accessories for the Klippon® K enclosure series allows you to easily adapt the enclosures to meet the specific requirements of every application.

- DIN Rails TS 35 and TS15
- Mounting plates
- Hinges
- Wall-mounted holder

**General ordering data**

Version	Klippon K (aluminium empty enclosure), Mounting plate, Mounting plate, Height: 213 mm, Width: 264 mm, Depth: 2 mm, Material: Sheet steel, galvanized, galvanized, silver
Order No.	<a href="#">3073140000</a>
Type	MOPL K71 STAHL
GTIN (EAN)	4008190858070
Qty.	1 pc(s).

**MOPL K71 STAHL****Weidmüller Interface GmbH & Co. KG**

Klingenbergstraße 26

D-32758 Detmold

Germany

[www.weidmueller.com](http://www.weidmueller.com)**Technical data****Dimensions and weights**

Depth	2 mm	Depth (inches)	0.079 inch
Height	213 mm	Height (inches)	8.386 inch
Width	264 mm	Width (inches)	10.394 inch
Mounting dimension - height	80 mm	Mounting dimension - width	250 mm
Net weight	789 g		

**General information**

Material	Sheet steel, galvanized	Material thickness	2 mm
Surface finish	galvanized	Type of fixing	when screwed in

**General information on accessories**

Material	Sheet steel, galvanized	Material thickness	2 mm
Mounting dimension - height	80 mm	Mounting dimension - width	250 mm
Surface finish	galvanized	Type of fixing	when screwed in

**Classifications**

ETIM 6.0	EC000213	ETIM 7.0	EC000213
ETIM 8.0	EC000213	ETIM 9.0	EC000213
ECLASS 9.0	27-40-06-39	ECLASS 9.1	27-18-92-90
ECLASS 10.0	27-40-06-39	ECLASS 11.0	27-40-06-39
ECLASS 12.0	27-40-06-39	ECLASS 13.0	27-40-06-39

**Approvals**

ROHS	Conform
------	---------

**Downloads**

Catalogues	<a href="#">Catalogues in PDF-format</a>
Brochures	

**MOPL K71 STAHL****Weidmüller Interface GmbH & Co. KG**

Klingenbergstraße 26

D-32758 Detmold

Germany

[www.weidmueller.com](http://www.weidmueller.com)**Accessories****Depth 7.5 mm**

The system accessories for the Klippon® K enclosure series allows you to easily adapt the enclosures to meet the specific requirements of every application.

- DIN Rails TS 35 and TS 15
- Mounting plates
- Hinges
- Wall-mounted holder

**General ordering data**

Type	TS35X7.5 ST K71	Version
Order No.	<a href="#">8866120000</a>	Rail, TS 35, TS 35 x 7.5, Width: 260 mm, with slot, Steel, galvanic zinc
GTIN (EAN)	4050118652697	plated and passivated
Qty.	20 pc(s).	