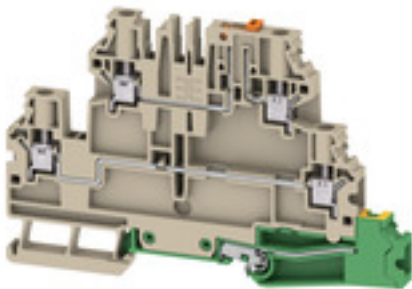


**W2T 4 DT-FT-PE****Weidmüller Interface GmbH & Co. KG**

Klingenbergstraße 26

D-32758 Detmold

Germany

[www.weidmueller.com](http://www.weidmueller.com)

In some applications it makes sense to add a test point or a disconnect element to the feed through terminal for testing and safety purposes. With test disconnect terminals you measure electric circuits in the absence of voltage. While the disconnecting points clearance and creepage distance is not assessed in dimensional terms, the specified rated impulse voltage strength must be proven.

**General ordering data**

|            |   |
|------------|---|
| Version    | Test-disconnect terminal, Screw connection, 4 mm <sup>2</sup> , 500 V, 28 A, Pivoting, Cross-disconnect: sliding, Integral test socket: No, TS 35, dark beige |
| Order No.  | <a href="#">2893730000</a>  |
| Type       | W2T 4 DT-FT-PE  |
| GTIN (EAN) | 4064675884873   |
| Qty.       | 50 pc(s).   |

**W2T 4 DT-FT-PE****Weidmüller Interface GmbH & Co. KG**

Klingenbergstraße 26

D-32758 Detmold

Germany

www.weidmueller.com

**Technical data****Dimensions and weights**

|            |          |                 |            |
|------------|----------|-----------------|------------|
| Depth      | 72.5 mm  | Depth (inches)  | 2.854 inch |
| Height     | 106.5 mm | Height (inches) | 4.193 inch |
| Width      | 6.1 mm   | Width (inches)  | 0.24 inch  |
| Net weight | 31.44 g  |                 |            |

**Temperatures**

|                                  |        |                                  |        |
|----------------------------------|--------|----------------------------------|--------|
| Continuous operating temp., min. | -60 °C | Continuous operating temp., max. | 130 °C |
|----------------------------------|--------|----------------------------------|--------|

**Material data**

|                           |       |        |            |
|---------------------------|-------|--------|------------|
| Material                  | Wemid | Colour | dark beige |
| UL 94 flammability rating | V-0   |        |            |

**Rating data IECEx/ATEX**

|                                |                   |                                 |                   |
|--------------------------------|-------------------|---------------------------------|-------------------|
| Certificate No. (ATEX)         | TUEV20ATEX8502U   | Certificate No. (IECEX)         | IECEXTUR20.0014U  |
| Max. voltage (ATEX)            | 550 V             | Current (ATEX)                  | 23 A              |
| Wire cross section max. (ATEX) | 4 mm <sup>2</sup> | Max. voltage (IECEX)            | 550 V             |
| Current (IECEX)                | 23 A              | Wire cross section max. (IECEX) | 4 mm <sup>2</sup> |

**System specifications**

|                               |       |                                     |    |
|-------------------------------|-------|-------------------------------------|----|
| End cover plate required      | Yes   | Number of potentials                | 3  |
| Number of levels              | 3     | Number of clamping points per level | 2  |
| Number of potentials per tier | 1     | Levels cross-connected internally   | No |
| Rail                          | TS 35 | N-function                          | No |
| PE function                   | Yes   | PEN function                        | No |

**Additional technical data**

|                          |     |                  |       |
|--------------------------|-----|------------------|-------|
| Explosion-tested version | No  | Open sides       | right |
| Snap-on                  | Yes | Type of mounting | TS 35 |

**Conductors for clamping (additional connection)**

|  |                  |
|--|------------------|
| Connection type, additional connection | Screw connection |
|--|------------------|

## W2T 4 DT-FT-PE

Weidmüller Interface GmbH &amp; Co. KG

Klingenbergstraße 26

D-32758 Detmold

Germany

www.weidmueller.com

## Technical data

## Conductors for clamping (rated connection)

|   |                      |   |                     |
|---|----------------------|---|---------------------|
| Blade size  | 0.6 x 3.5 mm         | Clamping range, max.  | 6 mm <sup>2</sup>   |
| Clamping range, min.  | 0.34 mm <sup>2</sup> | Clamping screw  | M 3                 |
| Connection cross-section, stranded, max.  | 6 mm <sup>2</sup>    | Connection cross-section, stranded, min.  | 0.5 mm <sup>2</sup> |
| Connection direction  | on side              | Gauge to IEC 60947-1  | A3                  |
| Number of connections   | 5                    | Stripping length  | 8 mm                |
| Tightening torque, max.   | 0.8 Nm               | Tightening torque, min.   | 0.5 Nm              |
| Twin wire-end ferrules, max.  | 1.5 mm <sup>2</sup>  | Twin wire-end ferrules, min.  | 0.5 mm <sup>2</sup> |
| Type of connection  | Screw connection     | Type of connection 2  | Screw connection    |
| Wire connection cross section AWG, max.   | AWG 10               | Wire connection cross section AWG, min.   | AWG 24              |
| Wire connection cross section, finely stranded, max.                                    | 6 mm <sup>2</sup>    | Wire connection cross section, finely stranded, min.                                    | 0.5 mm <sup>2</sup> |
| Wire connection cross-section, finely stranded with wire-end ferrules DIN 46228/1, max. | 4 mm <sup>2</sup>    | Wire connection cross-section, finely stranded with wire-end ferrules DIN 46228/1, min. | 0.5 mm <sup>2</sup> |
| Wire connection cross-section, finely stranded with wire-end ferrules DIN 46228/4, max. | 4 mm <sup>2</sup>    | Wire connection cross-section, finely stranded with wire-end ferrules DIN 46228/4, min. | 0.5 mm <sup>2</sup> |
| Wire connection cross-section, solid core, max.   | 6 mm <sup>2</sup>    | Wire connection cross-section, solid core, min.   | 0.5 mm <sup>2</sup> |

## Disconnect terminals

|                  |          |                      |    |
|------------------|----------|----------------------|----|
| Cross-disconnect | sliding  | Integral test socket | No |
| Slitting         | Pivoting |                      |    |

## General

|   |        |   |                              |
|---|--------|---|------------------------------|
| Rail                                    | TS 35  | Standards                               | IEC 60947-7-1, IEC 60947-7-2 |
| Wire connection cross section AWG, max. | AWG 10 | Wire connection cross section AWG, min. | AWG 24                       |

## PE rating data

|              |    |
|--------------|----|
| PEN function | No |
|--------------|----|

## Rating data

|  |                   |                                 |                              |
|--|-------------------|---------------------------------|------------------------------|
| Rated cross-section                          | 4 mm <sup>2</sup> | Rated voltage                   | 500 V                        |
| Rated DC voltage                             | 500 V             | Rated current                   | 28 A                         |
| Current at maximum wires                     | 28 A              | Standards                       | IEC 60947-7-1, IEC 60947-7-2 |
| Volume resistance according to IEC 60947-7-x | 1 mΩ              | Rated impulse withstand voltage | 6 kV                         |
| Pollution severity                           | 3                 | Surge voltage category          | III                          |

## UL rating data

|  |        |  |        |
|--|--------|--|--------|
| Certificate No. (cURus)                    | E60693 | Conductor size Factory wiring max. (cURus) | 12 AWG |
| Conductor size Factory wiring min. (cURus) | 24 AWG | Conductor size Field wiring max. (cURus)   | 12 AWG |
| Conductor size Field wiring min. (cURus)   | 24 AWG |  |        |

## W2T 4 DT-FT-PE

Weidmüller Interface GmbH &amp; Co. KG

Klingenbergstraße 26

D-32758 Detmold

Germany

www.weidmueller.com

## Technical data

## Classifications

|             |             |             |             |
|-------------|-------------|-------------|-------------|
| ETIM 6.0    | EC000902    | ETIM 7.0    | EC000902    |
| ETIM 8.0    | EC000902    | ETIM 9.0    | EC000902    |
| ECLASS 9.0  | 27-14-11-26 | ECLASS 9.1  | 27-14-11-26 |
| ECLASS 10.0 | 27-14-11-26 | ECLASS 11.0 | 27-14-11-26 |
| ECLASS 12.0 | 27-14-11-26 | ECLASS 13.0 | 27-25-01-09 |

## Approvals

Approvals



|                         |            |
|-------------------------|------------|
| ROHS                    | Conform    |
| UL File Number Search   | UL Website |
| Certificate No. (cURus) | E60693     |

## Downloads

|   |  |
|---|--|
| Approval/Certificate/Document of Conformity | <a href="#">Attestation of Conformity</a><br><a href="#">IECEx Certificate</a><br><a href="#">ATEX Certificate</a><br><a href="#">UKCA Ex Certificate</a><br><a href="#">CCC Certificate</a><br><a href="#">UKCA declaration of conformity</a> |
| Engineering Data                            | <a href="#">CAD data – STEP</a>  |
| User Documentation                          | <a href="#">NTI W2T 4 DT-FT</a>  |
| Catalogues                                  | <a href="#">Catalogues in PDF-format</a>   |

### W2T 4 DT-FT-PE

**Weidmüller Interface GmbH & Co. KG**

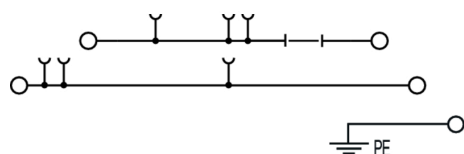
Klingenbergstraße 26

D-32758 Detmold

Germany

[www.weidmueller.com](http://www.weidmueller.com)

## Drawings



**W2T 4 DT-FT-PE****Weidmüller Interface GmbH & Co. KG**

Klingenbergstraße 26

D-32758 Detmold

Germany

[www.weidmueller.com](http://www.weidmueller.com)**Accessories****End plates**

To ensure the finger safety and the compliance to the required clearance and creepage distances, an end plate has to be placed at the end of a plug.

**General ordering data**

|            |                            |   |
|------------|----------------------------|---|
| Type       | WEP 2T 4 BL                | Version   |
| Order No.  | <a href="#">2894250000</a> | End plate (terminals), 95.5 mm x 2 mm, blue       |
| GTIN (EAN) | 4064675885238              |   |
| Qty.       | 20 pc(s).                  |   |
| Type       | WEP 2T 4                   | Version   |
| Order No.  | <a href="#">2894240000</a> | End plate (terminals), 95.5 mm x 2 mm, dark beige |
| GTIN (EAN) | 4064675885221              |   |
| Qty.       | 20 pc(s).                  |   |
| Type       | WEP 2T 4 BK                | Version   |
| Order No.  | <a href="#">2894260000</a> | End plate (terminals), 95.5 mm x 2 mm, black      |
| GTIN (EAN) | 4064675885245              |   |
| Qty.       | 20 pc(s).                  |   |

## W2T 4 DT-FT-PE

Weidmüller Interface GmbH &amp; Co. KG

Klingenbergstraße 26

D-32758 Detmold

Germany

www.weidmueller.com

## Accessories

## WS 8/6



## WS/ DEK

MultiMark terminal markers use an innovative composite material made from two components. The hard base contour of the marker snaps securely into the connector. The elastic surface finish makes the marker easy to mount. This specially punched material enables the strips to be stretched to accommodate the slight variations in spacing that tend to add up, especially with long terminal blocks. Another advantage: the excellent printability of the surface material guarantees durable and wear-resistant labelling. A print resolution of 300 dpi also produces a very legible script.

## Your benefits with MultiMark

- Firm hold and durable printing
- Continuous strips save installation time
- Easy mounting thanks to an innovative composite material
- Large label field for optimal legibility
- High flexibility thanks to manufacturer independence

## General ordering data

|            |                            |   |
|------------|----------------------------|---|
| Type       | WS 8/6 MM WS               | Version   |
| Order No.  | <a href="#">2007160000</a> | WS, Terminal marker, 8 x 6 mm, Weidmueller, white |
| GTIN (EAN) | 4050118391879              |   |
| Qty.       | 600 pc(s).                 |   |

## Custom printing



ZS markers - in proven MultiCard-format - have been developed specifically for the Z-series. They have a large printing area. The hinged mechanism even allows access to cross-connectors without dismantling. Quick installation is guaranteed by the fact that the single tags are clipped on in strips. The single tags are easy to separate.

- Hinged marker area
- Can be fitted in strips or individually
- Markers in proven MultiCard format

**For custom printing:** Please send us a file of our labeling software M-Print PRO or M-Print PRO Online (without installation) for your labeling specifications.

## General ordering data

|            |                            |   |
|------------|----------------------------|---|
| Type       | ZS 30/5 MC SDR             | Version   |
| Order No.  | <a href="#">2682070000</a> | ZS, Terminal marker, 30 x 5 mm, Weidmueller, Allen-Bradley, To customer specification |
| GTIN (EAN) | 4050118803075              |   |
| Qty.       | 40 pc(s).                  |   |

## W2T 4 DT-FT-PE

Weidmüller Interface GmbH &amp; Co. KG

Klingenbergstraße 26

D-32758 Detmold

Germany

www.weidmueller.com

## Accessories

## DEK 5/6



## WS/ DEK

MultiMark terminal markers use an innovative composite material made from two components. The hard base contour of the marker snaps securely into the connector. The elastic surface finish makes the marker easy to mount. This specially punched material enables the strips to be stretched to accommodate the slight variations in spacing that tend to add up, especially with long terminal blocks. Another advantage: the excellent printability of the surface material guarantees durable and wear-resistant labelling. A print resolution of 300 dpi also produces a very legible script.

## Your benefits with MultiMark

- Firm hold and durable printing
- Continuous strips save installation time
- Easy mounting thanks to an innovative composite material
- Large label field for optimal legibility
- High flexibility thanks to manufacturer independence

## General ordering data

|            |                            |  |
|------------|----------------------------|--|
| Type       | DEK 5/6 MM WS              | Version  |
| Order No.  | <a href="#">2007120000</a> | Dekafix, Terminal marker, 5 x 6 mm, Weidmueller, white |
| GTIN (EAN) | 4050118392104              |  |
| Qty.       | 600 pc(s).                 |  |

## Custom printing



ZS markers - in proven MultiCard-format - have been developed specifically for the Z-series. They have a large printing area. The hinged mechanism even allows access to cross-connectors without dismantling. Quick installation is guaranteed by the fact that the single tags are clipped on in strips. The single tags are easy to separate.

- Hinged marker area
- Can be fitted in strips or individually
- Markers in proven MultiCard format

**For custom printing:** Please send us a file of our labeling software M-Print PRO or M-Print PRO Online (without installation) for your labeling specifications.

## General ordering data

|            |                            |  |
|------------|----------------------------|--|
| Type       | ZS 12/6 MC SDR             | Version  |
| Order No.  | <a href="#">1610030000</a> | ZS, Terminal marker, 12 x 6 mm, Pitch in mm (P): 6.00 Weidmueller, |
| GTIN (EAN) | 4008190456689              | Allen-Bradley, To customer specification                           |
| Qty.       | 80 pc(s).                  |  |



## W2T 4 DT-FT-PE

Weidmüller Interface GmbH &amp; Co. KG

Klingenbergstraße 26

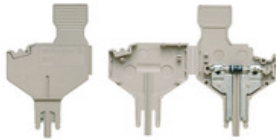
D-32758 Detmold

Germany

www.weidmueller.com

## Accessories

## Component plugs



The component plug is used to integrate an electrical component in a disconnect terminal block. After soldering the electronic component, the plug can be integrated into the disconnection area of our disconnect terminal blocks and thus changes the disconnect terminal block into a modular terminal block with integrated electronic component.

## General ordering data

|            |                            |                                   |
|------------|----------------------------|-----------------------------------|
| Type       | BEST/DRBR                  | Version                           |
| Order No.  | <a href="#">1878570000</a> | Accessories, Component plug, 22 A |
| GTIN (EAN) | 4032248471508              |                                   |
| Qty.       | 50 pc(s).                  |                                   |
| Type       | BEST                       | Version                           |
| Order No.  | <a href="#">1833100000</a> | Accessories, Component plug       |
| GTIN (EAN) | 4032248501014              |                                   |
| Qty.       | 50 pc(s).                  |                                   |
| Type       | BEST/D                     | Version                           |
| Order No.  | <a href="#">1878560000</a> | Accessories, Component plug, 1 A  |
| GTIN (EAN) | 4032248471492              |                                   |
| Qty.       | 50 pc(s).                  |                                   |

## Blank



ZS markers - in proven MultiCard-format - have been developed specifically for the Z-series. They have a large printing area. The hinged mechanism even allows access to cross-connectors without dismantling. Quick installation is guaranteed by the fact that the single tags are clipped on in strips. The single tags are easy to separate.

- Hinged marker area
- Can be fitted in strips or individually
- Markers in proven MultiCard format

**For custom printing:** Please send us a file of our labeling software M-Print PRO or M-Print PRO Online (without installation) for your labeling specifications.

## General ordering data

|            |                            |   |
|------------|----------------------------|---|
| Type       | ZS 30/5 MC NE WS           | Version   |
| Order No.  | <a href="#">2681880000</a> | ZS, Terminal marker, 30 x 5 mm, Weidmueller, Allen-Bradley, white |
| GTIN (EAN) | 4050118803068              |   |
| Qty.       | 200 pc(s).                 |   |

**W2T 4 DT-FT-PE****Weidmüller Interface GmbH & Co. KG**

Klingenbergstraße 26

D-32758 Detmold

Germany

[www.weidmueller.com](http://www.weidmueller.com)**Accessories****Slotted screwdriver**

Slotted screwdriver with rounded blade SD DIN 5265, ISO 2380/2, output to DIN 5264, ISO 2380/1. ChromTop tip, SoftFinish grip

**General ordering data**

|            |                            |   |
|------------|----------------------------|---|
| Type       | SDS 0.6X3.5X100            | Version   |
| Order No.  | <a href="#">2749340000</a> | Screwdriver, Blade width (B): 3.5 mm, Blade length: 100 mm, Blade thickness (A): 0.6 mm |
| GTIN (EAN) | 4050118895568              |   |
| Qty.       | 1 pc(s).                   |   |

**Marker holder**

The marker holder offer the possibility of additional mounting of standard markers with a pitch of 5 or 5.1 mm. The angled holders can be optionally snapped together and could be mounted in all standard marking channels of the Klippon® Connect modular terminal blocks. Fitting marker types could be found under the respective accessories of the designation marking holder.

**General ordering data**

|            |                            |                            |
|------------|----------------------------|----------------------------|
| Type       | BZT 1 ZA WS 10/5           | Version                    |
| Order No.  | <a href="#">1805520000</a> | Accessories, Marker holder |
| GTIN (EAN) | 4032248270248              |                            |
| Qty.       | 100 pc(s).                 |                            |
| Type       | BZT 1 WS 10/5              | Version                    |
| Order No.  | <a href="#">1805490000</a> | Accessories, Marker holder |
| GTIN (EAN) | 4032248270231              |                            |
| Qty.       | 100 pc(s).                 |                            |

## W2T 4 DT-FT-PE

Weidmüller Interface GmbH &amp; Co. KG

Klingenbergstraße 26

D-32758 Detmold

Germany

www.weidmueller.com

## Accessories

## Disconnect plugs



In contrast to the terminal blocks with integrated disconnect lever, our disconnect plugs can be completely detached or removed from the terminal block and the respective application and offer a flexible alternative solution to our standard disconnectors.

## General ordering data

|            |                            |   |
|------------|----------------------------|---|
| Type       | TNST OR                    | Version                                   |
| Order No.  | <a href="#">2463540000</a> | Disconnect plug (terminal), Wemid, orange |
| GTIN (EAN) | 4050118478211              |   |
| Qty.       | 50 pc(s).                  |   |
| Type       | TNHE ZDL2.5 OR             | Version                                   |
| Order No.  | <a href="#">2432480000</a> | Disconnecting lever (terminal)            |
| GTIN (EAN) | 4050118443318              |   |
| Qty.       | 100 pc(s).                 |   |

## Blank



The Dekafix (DEK) marker is the universal marker for all conductor and plug-in connectors as well as for electronic sub-assemblies. The system is ideal for short number sequences and covers a wide range of ready-printed markers.

Strips for fast installation in only one work step. The printing is easy to read, rich in contrast and available in various widths.

- Large range of ready-to-use markers
- Strips for fast installation
- Terminal markers, suitable for all Weidmüller cable connectors
- Available as blank MultiCard or with standard printing

**For custom printing:** Please send us a file of our labeling software M-Print PRO or M-Print PRO Online (without installation) for your labeling specifications.

## General ordering data

|            |                            |   |
|------------|----------------------------|---|
| Type       | DEK 5/5 MC NE WS           | Version   |
| Order No.  | <a href="#">1609801044</a> | Dekafix, Terminal marker, 5 x 5 mm, Pitch in mm (P): 5.00 |
| GTIN (EAN) | 4008190397111              | Weidmueller, white  |
| Qty.       | 1,000 pc(s).               |   |

## W2T 4 DT-FT-PE

Weidmüller Interface GmbH &amp; Co. KG

Klingenbergstraße 26

D-32758 Detmold

Germany

www.weidmueller.com

## Accessories

4 mm<sup>2</sup>


The plug-in cross-connections feature easy handling and quick installation. This saves a great deal of time during installation in comparison with screwed solutions.

## General ordering data

|            |                            |   |
|------------|----------------------------|---|
| Type       | ZQV 4N/10 BL               | Version   |
| Order No.  | <a href="#">1528230000</a> | Cross-connector (terminal), Plugged, Number of poles: 10, Pitch in mm |
| GTIN (EAN) | 4050118333138              | (P): 6.10, Insulated: Yes, 32 A, blue                                 |
| Qty.       | 20 pc(s).                  |   |
| Type       | ZQV 4N/9 BK                | Version   |
| Order No.  | <a href="#">2831780000</a> | Cross-connector (terminal), Plugged, Number of poles: 20, Pitch in mm |
| GTIN (EAN) | 4064675417019              | (P): 6.10, Insulated: Yes, 32 A, black                                |
| Qty.       | 20 pc(s).                  |   |
| Type       | ZQV 4N/10 WT               | Version   |
| Order No.  | <a href="#">2831790000</a> | Cross-connector (terminal), Plugged, Number of poles: 10, Pitch in mm |
| GTIN (EAN) | 4064675417026              | (P): 6.10, Insulated: Yes, 32 A, white                                |
| Qty.       | 20 pc(s).                  |   |
| Type       | ZQV 4N/10                  | Version   |
| Order No.  | <a href="#">1528090000</a> | Cross-connector (terminal), Plugged, Number of poles: 10, Pitch in mm |
| GTIN (EAN) | 4050118332896              | (P): 6.10, Insulated: Yes, 32 A, orange                               |
| Qty.       | 20 pc(s).                  |   |
| Type       | ZQV 4N/7                   | Version   |
| Order No.  | <a href="#">1528020000</a> | Cross-connector (terminal), Plugged, Number of poles: 7, Pitch in mm  |
| GTIN (EAN) | 4050118332780              | (P): 6.10, Insulated: Yes, 32 A, orange                               |
| Qty.       | 20 pc(s).                  |   |
| Type       | ZQV 4N/8 WT                | Version   |
| Order No.  | <a href="#">2831860000</a> | Cross-connector (terminal), Plugged, Number of poles: 4, Pitch in mm  |
| GTIN (EAN) | 4064675417095              | (P): 6.10, Insulated: Yes, 32 A, white                                |
| Qty.       | 20 pc(s).                  |   |
| Type       | ZQV 4N/2                   | Version   |
| Order No.  | <a href="#">1527930000</a> | Cross-connector (terminal), Plugged, Number of poles: 2, Pitch in mm  |
| GTIN (EAN) | 4050118332766              | (P): 6.10, Insulated: Yes, 32 A, orange                               |
| Qty.       | 60 pc(s).                  |   |
| Type       | ZQV 4N/2 WT                | Version   |
| Order No.  | <a href="#">2831800000</a> | Cross-connector (terminal), Plugged, Number of poles: 20, Pitch in mm |
| GTIN (EAN) | 4064675417033              | (P): 6.10, Insulated: Yes, 32 A, white                                |
| Qty.       | 60 pc(s).                  |   |
| Type       | ZQV 4N/20                  | Version   |
| Order No.  | <a href="#">2883800000</a> | Cross-connector (terminal), Plugged, Number of poles: 20, Pitch in mm |
| GTIN (EAN) | 4064675848769              | (P): 6.00, Insulated: Yes, 32 A, orange                               |
| Qty.       | 20 pc(s).                  |   |
| Type       | ZQV 4N/41 BL               | Version   |
| Order No.  | <a href="#">2883820000</a> | Cross-connector (terminal), Plugged, Number of poles: 41, Pitch in mm |
| GTIN (EAN) | 4064675848851              | (P): 6.10, Insulated: Yes, 32 A, blue                                 |
| Qty.       | 10 pc(s).                  |   |

## W2T 4 DT-FT-PE

Weidmüller Interface GmbH &amp; Co. KG

Klingenbergstraße 26

D-32758 Detmold

Germany

www.weidmueller.com

## Accessories

|            |                            |   |
|------------|----------------------------|---|
| Type       | ZQV 4N/4 BK                | Version   |
| Order No.  | <a href="#">2810890000</a> | Cross-connector (terminal), Plugged, Number of poles: 4, Pitch in mm  |
| GTIN (EAN) | 4064675283607              | (P): 6.00, Insulated: Yes, 32 A, black                                |
| Qty.       | 60 pc(s).                  |   |
| Type       | ZQV 4N/3 WT                | Version   |
| Order No.  | <a href="#">2831810000</a> | Cross-connector (terminal), Plugged, Number of poles: 41, Pitch in mm |
| GTIN (EAN) | 4064675417040              | (P): 6.10, Insulated: Yes, 32 A, white                                |
| Qty.       | 60 pc(s).                  |   |
| Type       | ZQV 4N/10 RD               | Version   |
| Order No.  | <a href="#">2460740000</a> | Cross-connector (terminal), Plugged, Number of poles: 10, Pitch in mm |
| GTIN (EAN) | 4050118476163              | (P): 6.10, 32 A, red  |
| Qty.       | 20 pc(s).                  |   |
| Type       | ZQV 4N/9 BL                | Version   |
| Order No.  | <a href="#">1528220000</a> | Cross-connector (terminal), Plugged, Number of poles: 9, Pitch in mm  |
| GTIN (EAN) | 4050118333107              | (P): 6.10, Insulated: Yes, 32 A, blue                                 |
| Qty.       | 20 pc(s).                  |   |
| Type       | ZQV 4N/50 RD               | Version   |
| Order No.  | <a href="#">2460730000</a> | Cross-connector (terminal), Plugged, Number of poles: 50, Pitch in mm |
| GTIN (EAN) | 4050118476156              | (P): 6.10, Insulated: Yes, 32 A, red                                  |
| Qty.       | 5 pc(s).                   |   |
| Type       | ZQV 4N/4 WT                | Version   |
| Order No.  | <a href="#">2831820000</a> | Cross-connector (terminal), Plugged, Number of poles: 20, Pitch in mm |
| GTIN (EAN) | 4064675417057              | (P): 6.10, Insulated: Yes, 32 A, white                                |
| Qty.       | 60 pc(s).                  |   |
| Type       | ZQV 4N/8                   | Version   |
| Order No.  | <a href="#">1528030000</a> | Cross-connector (terminal), Plugged, Number of poles: 8, Pitch in mm  |
| GTIN (EAN) | 4050118332841              | (P): 6.10, Insulated: Yes, 32 A, orange                               |
| Qty.       | 20 pc(s).                  |   |
| Type       | ZQV 4N/6                   | Version   |
| Order No.  | <a href="#">1527990000</a> | Cross-connector (terminal), Plugged, Number of poles: 6, Pitch in mm  |
| GTIN (EAN) | 4050118332919              | (P): 6.10, Insulated: Yes, 32 A, orange                               |
| Qty.       | 20 pc(s).                  |   |
| Type       | ZQV 4N/3                   | Version   |
| Order No.  | <a href="#">1527940000</a> | Cross-connector (terminal), Plugged, Number of poles: 3, Pitch in mm  |
| GTIN (EAN) | 4050118332865              | (P): 6.10, Insulated: Yes, 32 A, orange                               |
| Qty.       | 60 pc(s).                  |   |
| Type       | ZQV 4N/6 WT                | Version   |
| Order No.  | <a href="#">2831840000</a> | Cross-connector (terminal), Plugged, Number of poles: 2, Pitch in mm  |
| GTIN (EAN) | 4064675417071              | (P): 6.10, Insulated: Yes, 32 A, white                                |
| Qty.       | 20 pc(s).                  |   |
| Type       | ZQV 4N/9                   | Version   |
| Order No.  | <a href="#">1528070000</a> | Cross-connector (terminal), Plugged, Number of poles: 9, Pitch in mm  |
| GTIN (EAN) | 4050118332797              | (P): 6.10, Insulated: Yes, 32 A, orange                               |
| Qty.       | 20 pc(s).                  |   |
| Type       | ZQV 4N/6 BL                | Version   |
| Order No.  | <a href="#">1528170000</a> | Cross-connector (terminal), Plugged, Number of poles: 6, Pitch in mm  |
| GTIN (EAN) | 4050118332926              | (P): 6.10, Insulated: Yes, 32 A, blue                                 |
| Qty.       | 20 pc(s).                  |   |
| Type       | ZQV 4N/2 BK                | Version   |
| Order No.  | <a href="#">2810840000</a> | Cross-connector (terminal), Plugged, Number of poles: 2, Pitch in mm  |
| GTIN (EAN) | 4064675283454              | (P): 6.10, Insulated: Yes, 32 A, black                                |
| Qty.       | 60 pc(s).                  |   |

Creation date May 3, 2024 12:15:25 PM CEST

Catalogue status 20.04.2024 / We reserve the right to make technical changes.

13

## W2T 4 DT-FT-PE

Weidmüller Interface GmbH &amp; Co. KG

Klingenbergstraße 26

D-32758 Detmold

Germany

www.weidmueller.com

## Accessories

|            |                            |   |
|------------|----------------------------|---|
| Type       | ZQV 4N/20 BK               | Version   |
| Order No.  | <a href="#">2810870000</a> | Cross-connector (terminal), Plugged, Number of poles: 20, Pitch in mm |
| GTIN (EAN) | 4064675283485              | (P): 6.00, Insulated: Yes, 32 A, black                                |
| Qty.       | 20 pc(s).                  |   |
| Type       | ZQV 4N/32                  | Version   |
| Order No.  | <a href="#">2561670000</a> | Cross-connector (terminal), Plugged, Number of poles: 32, Pitch in mm |
| GTIN (EAN) | 4050118570175              | (P): 6.00, Insulated: Yes, 32 A, orange                               |
| Qty.       | 5 pc(s).                   |   |
| Type       | ZQV 4N/5                   | Version   |
| Order No.  | <a href="#">1527980000</a> | Cross-connector (terminal), Plugged, Number of poles: 5, Pitch in mm  |
| GTIN (EAN) | 4050118332759              | (P): 6.10, Insulated: Yes, 32 A, orange                               |
| Qty.       | 60 pc(s).                  |   |
| Type       | ZQV 4N/8 RD                | Version   |
| Order No.  | <a href="#">2460760000</a> | Cross-connector (terminal), Plugged, Number of poles: 8, Pitch in mm  |
| GTIN (EAN) | 4050118476187              | (P): 6.10, Insulated: Yes, 32 A, red                                  |
| Qty.       | 20 pc(s).                  |   |
| Type       | ZQV 4N/7 RD                | Version   |
| Order No.  | <a href="#">2460770000</a> | Cross-connector (terminal), Plugged, Number of poles: 7, Pitch in mm  |
| GTIN (EAN) | 4050118476194              | (P): 6.10, Insulated: Yes, 32 A, red                                  |
| Qty.       | 20 pc(s).                  |   |
| Type       | ZQV 4N/20 BL               | Version   |
| Order No.  | <a href="#">2810850000</a> | Cross-connector (terminal), Plugged, Number of poles: 10, Pitch in mm |
| GTIN (EAN) | 4064675283461              | (P): 6.10, Insulated: Yes, 32 A, blue                                 |
| Qty.       | 20 pc(s).                  |   |
| Type       | ZQV 4N/3 RD                | Version   |
| Order No.  | <a href="#">2460810000</a> | Cross-connector (terminal), Plugged, Number of poles: 3, Pitch in mm  |
| GTIN (EAN) | 4050118476231              | (P): 6.10, 32 A, red  |
| Qty.       | 60 pc(s).                  |   |
| Type       | ZQV 4N/4                   | Version   |
| Order No.  | <a href="#">1527970000</a> | Cross-connector (terminal), Plugged, Number of poles: 4, Pitch in mm  |
| GTIN (EAN) | 4050118332889              | (P): 6.10, Insulated: Yes, 32 A, orange                               |
| Qty.       | 60 pc(s).                  |   |
| Type       | ZQV 4N/6 BK                | Version   |
| Order No.  | <a href="#">2810910000</a> | Cross-connector (terminal), Plugged, Number of poles: 6, Pitch in mm  |
| GTIN (EAN) | 4064675283621              | (P): 6.00, Insulated: Yes, 32 A, black                                |
| Qty.       | 20 pc(s).                  |   |
| Type       | ZQV 4N/8 BK                | Version   |
| Order No.  | <a href="#">2810930000</a> | Cross-connector (terminal), Plugged, Number of poles: 8, Pitch in mm  |
| GTIN (EAN) | 4064675283645              | (P): 6.10, Insulated: Yes, 32 A, black                                |
| Qty.       | 20 pc(s).                  |   |
| Type       | ZQV 4N/41 BK               | Version   |
| Order No.  | <a href="#">2831890000</a> | Cross-connector (terminal), Plugged, Number of poles: 41, Pitch in mm |
| GTIN (EAN) | 4064675417125              | (P): 6.10, Insulated: Yes, 32 A, black                                |
| Qty.       | 10 pc(s).                  |   |
| Type       | ZQV 4N/20 RD               | Version   |
| Order No.  | <a href="#">2810860000</a> | Cross-connector (terminal), Plugged, Number of poles: 20, Pitch in mm |
| GTIN (EAN) | 4064675283478              | (P): 6.00, Insulated: Yes, 32 A, red                                  |
| Qty.       | 20 pc(s).                  |   |
| Type       | ZQV 4N/3 BL                | Version   |
| Order No.  | <a href="#">1528080000</a> | Cross-connector (terminal), Plugged, Number of poles: 3, Pitch in mm  |
| GTIN (EAN) | 4050118333008              | (P): 6.10, Insulated: Yes, 32 A, blue                                 |
| Qty.       | 60 pc(s).                  |   |

Creation date May 3, 2024 12:15:25 PM CEST

Catalogue status 20.04.2024 / We reserve the right to make technical changes.

## W2T 4 DT-FT-PE

Weidmüller Interface GmbH &amp; Co. KG

Klingenbergstraße 26

D-32758 Detmold

Germany

www.weidmueller.com

## Accessories

|            |                            |   |
|------------|----------------------------|---|
| Type       | ZQV 4N/30                  | Version   |
| Order No.  | <a href="#">2561580000</a> | Cross-connector (terminal), Plugged, Number of poles: 30, Pitch in mm |
| GTIN (EAN) | 4050118570113              | (P): 6.10, 32 A, orange   |
| Qty.       | 5 pc(s).                   |   |
| Type       | ZQV 4N/4 BL                | Version   |
| Order No.  | <a href="#">1528120000</a> | Cross-connector (terminal), Plugged, Number of poles: 4, Pitch in mm  |
| GTIN (EAN) | 4050118332872              | (P): 6.10, Insulated: Yes, 32 A, blue                                 |
| Qty.       | 60 pc(s).                  |   |
| Type       | ZQV 4N/7 WT                | Version   |
| Order No.  | <a href="#">2831850000</a> | Cross-connector (terminal), Plugged, Number of poles: 3, Pitch in mm  |
| GTIN (EAN) | 4064675417088              | (P): 6.10, Insulated: Yes, 32 A, white                                |
| Qty.       | 20 pc(s).                  |   |
| Type       | ZQV 4N/5 RD                | Version   |
| Order No.  | <a href="#">2460790000</a> | Cross-connector (terminal), Plugged, Number of poles: 5, Pitch in mm  |
| GTIN (EAN) | 4050118476217              | (P): 6.10, Insulated: Yes, 32 A, red                                  |
| Qty.       | 60 pc(s).                  |   |
| Type       | ZQV 4N/50                  | Version   |
| Order No.  | <a href="#">1528130000</a> | Cross-connector (terminal), Plugged, Number of poles: 50, Pitch in mm |
| GTIN (EAN) | 4050118332902              | (P): 6.10, Insulated: Yes, 32 A, orange                               |
| Qty.       | 5 pc(s).                   |   |
| Type       | ZQV 4N/30 RD               | Version   |
| Order No.  | <a href="#">2561600000</a> | Cross-connector (terminal), Plugged, Number of poles: 30, Pitch in mm |
| GTIN (EAN) | 4050118569964              | (P): 6.10, 32 A, red  |
| Qty.       | 5 pc(s).                   |   |
| Type       | ZQV 4N/30 BL               | Version   |
| Order No.  | <a href="#">2561610000</a> | Cross-connector (terminal), Plugged, Number of poles: 30, Pitch in mm |
| GTIN (EAN) | 4050118569971              | (P): 6.10, 32 A, blue   |
| Qty.       | 5 pc(s).                   |   |
| Type       | ZQV 4N/5 WT                | Version   |
| Order No.  | <a href="#">2831830000</a> | Cross-connector (terminal), Plugged, Number of poles: 41, Pitch in mm |
| GTIN (EAN) | 4064675417064              | (P): 6.10, Insulated: Yes, 32 A, white                                |
| Qty.       | 60 pc(s).                  |   |
| Type       | ZQV 4N/41                  | Version   |
| Order No.  | <a href="#">2883810000</a> | Cross-connector (terminal), Plugged, Number of poles: 41, Pitch in mm |
| GTIN (EAN) | 4064675848844              | (P): 6.10, Insulated: Yes, 32 A, orange                               |
| Qty.       | 10 pc(s).                  |   |
| Type       | ZQV 4N/6 RD                | Version   |
| Order No.  | <a href="#">2460780000</a> | Cross-connector (terminal), Plugged, Number of poles: 6, Pitch in mm  |
| GTIN (EAN) | 4050118476200              | (P): 6.10, Insulated: Yes, 32 A, red                                  |
| Qty.       | 20 pc(s).                  |   |
| Type       | ZQV 4N/50 BL               | Version   |
| Order No.  | <a href="#">1528240000</a> | Cross-connector (terminal), Plugged, Number of poles: 50, Pitch in mm |
| GTIN (EAN) | 4050118333121              | (P): 6.10, Insulated: Yes, 32 A, blue                                 |
| Qty.       | 5 pc(s).                   |   |
| Type       | ZQV 4N/5 BK                | Version   |
| Order No.  | <a href="#">2810900000</a> | Cross-connector (terminal), Plugged, Number of poles: 5, Pitch in mm  |
| GTIN (EAN) | 4064675283614              | (P): 6.00, Insulated: Yes, 32 A, black                                |
| Qty.       | 60 pc(s).                  |   |
| Type       | ZQV 4N/10 BK               | Version   |
| Order No.  | <a href="#">2810830000</a> | Cross-connector (terminal), Plugged, Number of poles: 10, Pitch in mm |
| GTIN (EAN) | 4064675283447              | (P): 6.10, Insulated: Yes, 32 A, black                                |
| Qty.       | 20 pc(s).                  |   |

Creation date May 3, 2024 12:15:25 PM CEST

Catalogue status 20.04.2024 / We reserve the right to make technical changes.

15

## W2T 4 DT-FT-PE

Weidmüller Interface GmbH &amp; Co. KG

Klingenbergstraße 26

D-32758 Detmold

Germany

www.weidmueller.com

## Accessories

|            |                            |   |
|------------|----------------------------|---|
| Type       | ZQV 4N/8 BL                | Version   |
| Order No.  | <a href="#">1528190000</a> | Cross-connector (terminal), Plugged, Number of poles: 8, Pitch in mm  |
| GTIN (EAN) | 4050118332858              | (P): 6.10, Insulated: Yes, 32 A, blue                                 |
| Qty.       | 20 pc(s).                  |   |
| Type       | ZQV 4N/2 RD                | Version   |
| Order No.  | <a href="#">2460450000</a> | Cross-connector (terminal), Plugged, Number of poles: 2, Pitch in mm  |
| GTIN (EAN) | 4050118476149              | (P): 6.10, 32 A, red  |
| Qty.       | 60 pc(s).                  |   |
| Type       | ZQV 4N/5 BL                | Version   |
| Order No.  | <a href="#">1528140000</a> | Cross-connector (terminal), Plugged, Number of poles: 5, Pitch in mm  |
| GTIN (EAN) | 4050118333015              | (P): 6.10, Insulated: Yes, 32 A, blue                                 |
| Qty.       | 60 pc(s).                  |   |
| Type       | ZQV 4N/2 BL                | Version   |
| Order No.  | <a href="#">1528040000</a> | Cross-connector (terminal), Plugged, Number of poles: 2, Pitch in mm  |
| GTIN (EAN) | 4050118332773              | (P): 6.10, Insulated: Yes, 32 A, blue                                 |
| Qty.       | 60 pc(s).                  |   |
| Type       | ZQV 4N/3 BK                | Version   |
| Order No.  | <a href="#">2810880000</a> | Cross-connector (terminal), Plugged, Number of poles: 3, Pitch in mm  |
| GTIN (EAN) | 4064675283492              | (P): 6.00, Insulated: Yes, 32 A, black                                |
| Qty.       | 60 pc(s).                  |   |
| Type       | ZQV 4N/7 BL                | Version   |
| Order No.  | <a href="#">1528180000</a> | Cross-connector (terminal), Plugged, Number of poles: 7, Pitch in mm  |
| GTIN (EAN) | 4050118333114              | (P): 6.10, Insulated: Yes, 32 A, blue                                 |
| Qty.       | 20 pc(s).                  |   |
| Type       | ZQV 4N/9 RD                | Version   |
| Order No.  | <a href="#">2460750000</a> | Cross-connector (terminal), Plugged, Number of poles: 9, Pitch in mm  |
| GTIN (EAN) | 4050118476170              | (P): 6.10, Insulated: Yes, 32 A, red                                  |
| Qty.       | 20 pc(s).                  |   |
| Type       | ZQV 4N/7 BK                | Version   |
| Order No.  | <a href="#">2810920000</a> | Cross-connector (terminal), Plugged, Number of poles: 7, Pitch in mm  |
| GTIN (EAN) | 4064675283638              | (P): 6.10, Insulated: Yes, 32 A, black                                |
| Qty.       | 20 pc(s).                  |   |
| Type       | ZQV 4N/9 WT                | Version   |
| Order No.  | <a href="#">2831870000</a> | Cross-connector (terminal), Plugged, Number of poles: 10, Pitch in mm |
| GTIN (EAN) | 4064675417101              | (P): 6.10, Insulated: Yes, 32 A, white                                |
| Qty.       | 20 pc(s).                  |   |
| Type       | ZQV 4N/4 RD                | Version   |
| Order No.  | <a href="#">2460800000</a> | Cross-connector (terminal), Plugged, Number of poles: 4, Pitch in mm  |
| GTIN (EAN) | 4050118476224              | (P): 6.10, Insulated: Yes, 32 A, red                                  |
| Qty.       | 60 pc(s).                  |   |
| Type       | ZQV 4N/41 RD               | Version   |
| Order No.  | <a href="#">2883840000</a> | Cross-connector (terminal), Plugged, Number of poles: 41, Pitch in mm |
| GTIN (EAN) | 4064675848868              | (P): 6.10, Insulated: Yes, 32 A, red                                  |
| Qty.       | 10 pc(s).                  |   |



## W2T 4 DT-FT-PE

Weidmüller Interface GmbH &amp; Co. KG

Klingenbergstraße 26

D-32758 Detmold

Germany

www.weidmueller.com

## Accessories

## Blank



ZS markers - in proven MultiCard-format - have been developed specifically for the Z-series. They have a large printing area. The hinged mechanism even allows access to cross-connectors without dismantling. Quick installation is guaranteed by the fact that the single tags are clipped on in strips. The single tags are easy to separate.

- Hinged marker area
- Can be fitted in strips or individually
- Markers in proven MultiCard format

**For custom printing:** Please send us a file of our labeling software M-Print PRO or M-Print PRO Online (without installation) for your labeling specifications.

## General ordering data

|            |                            |  |
|------------|----------------------------|--|
| Type       | ZS 12/6 MC NE WS           | Version  |
| Order No.  | <a href="#">1610020000</a> | ZS, Terminal marker, 12 x 6 mm, Pitch in mm (P): 6.00 Weidmueller, |
| GTIN (EAN) | 4008190444600              | Allen-Bradley, white   |
| Qty.       | 400 pc(s).                 |  |

## Plus



The Dekafix (DEK) marker is the universal marker for all conductor and plug-in connectors as well as for electronic sub-assemblies. The system is ideal for short number sequences and covers a wide range of ready-printed markers.

Strips for fast installation in only one work step. The printing is easy to read, rich in contrast and available in various widths.

- Large range of ready-to-use markers
- Strips for fast installation
- Terminal markers, suitable for all Weidmüller cable connectors
- Available as blank MultiCard or with standard printing

**For custom printing:** Please send us a file of our labeling software M-Print PRO or M-Print PRO Online (without installation) for your labeling specifications.

## General ordering data

|            |                            |   |
|------------|----------------------------|---|
| Type       | DEK 5/6 PLUS MC NE WS      | Version   |
| Order No.  | <a href="#">1011320000</a> | Dekafix, Terminal marker, 5 x 6 mm, Pitch in mm (P): 6.00 |
| GTIN (EAN) | 4032248717644              | Weidmueller, white  |
| Qty.       | 1,000 pc(s).               |   |

## W2T 4 DT-FT-PE

Weidmüller Interface GmbH &amp; Co. KG

Klingenbergstraße 26

D-32758 Detmold

Germany

www.weidmueller.com

## Accessories

## Switch lock



## General ordering data

|            |                            |  |
|------------|----------------------------|--|
| Type       | DTLE 2.5/4                 | Version                                |
| Order No.  | <a href="#">2910530000</a> | Locking element (terminal), Wemid, red |
| GTIN (EAN) | 4099986519466              |  |
| Qty.       | 25 pc(s).                  |  |

## W-Series



Weidmüller's range of products includes end brackets that guarantee a permanent, reliable mounting on the terminal rail and prevent sliding. Versions with and without screws are available. The end brackets include marking options, also for group markers, and also a test plug holder.

## General ordering data

|            |                            |  |
|------------|----------------------------|--|
| Type       | WEW 35/2 GR                | Version  |
| Order No.  | <a href="#">1859200000</a> | End bracket, Wemid, grey, Rail: TS 35, when screwed in       |
| GTIN (EAN) | 4032248411658              |  |
| Qty.       | 100 pc(s).                 |  |
| Type       | WEW 35/2 SW                | Version  |
| Order No.  | <a href="#">1061210000</a> | End bracket, Wemid, black, Rail: TS 35, when screwed in      |
| GTIN (EAN) | 4032248136278              |  |
| Qty.       | 50 pc(s).                  |  |
| Type       | WEW 35/2                   | Version  |
| Order No.  | <a href="#">1061200000</a> | End bracket, Wemid, dark beige, Rail: TS 35, when screwed in |
| GTIN (EAN) | 4008190030230              |  |
| Qty.       | 50 pc(s).                  |  |

**W2T 4 DT-FT-PE****Weidmüller Interface GmbH & Co. KG**

Klingenbergstraße 26

D-32758 Detmold

Germany

[www.weidmueller.com](http://www.weidmueller.com)**Accessories****Hinged Plug**

The comprehensive accessories of the Klippon® Connect portfolio are perfectly matched down to the last detail. This facilitates mounting while adhering to required norms

**General ordering data**

|            |                            |   |
|------------|----------------------------|---|
| Type       | FSC-HPG BK W2C 4           | Version                                     |
| Order No.  | <a href="#">2939280000</a> | Accessories holder (terminal), Wemid, black |
| GTIN (EAN) | 4099986702295              |   |
| Qty.       | 20 pc(s).                  |   |

**W2T 4 DT-FT-PE****Weidmüller Interface GmbH & Co. KG**

Klingenbergstraße 26

D-32758 Detmold

Germany

[www.weidmueller.com](http://www.weidmueller.com)**Accessories****MultiFit****MultiMark MultiFit**

For connectors from competitors.

The elastic surface finish makes for simple installation.

This special material enables the strips to be stretched to accommodate slight variations in spacing, especially with long terminal blocks.

A print resolution of 300 dpi also produces a very legible script.

**Your benefits with MultiMark**

- Firm hold and durable printing
- Continuous strips save installation time
- Easy mounting thanks to an innovative composite material
- Large label field for optimal legibility
- High flexibility thanks to manufacturer independence

- Firm hold and durable printing
- Continuous strips save installation time
- Easy mounting thanks to an innovative composite material
- Large label field for optimal legibility
- High flexibility thanks to manufacturer independence

]

- Firm hold and durable printing
- Continuous strips save installation time
- Easy mounting thanks to an innovative composite material
- Large label field for optimal legibility
- High flexibility thanks to manufacturer independence

**General ordering data**

|            |                            |                                     |
|------------|----------------------------|-------------------------------------|
| Type       | EL KSM 10.6 MM WS 30M      | Version                             |
| Order No.  | <a href="#">2799270000</a> | Terminal marker, 10.6 x 5 mm, white |
| GTIN (EAN) | 4064675261032              |                                     |
| Qty.       | 1 pc(s).                   |                                     |

## W2T 4 DT-FT-PE

Weidmüller Interface GmbH &amp; Co. KG

Klingenbergstraße 26

D-32758 Detmold

Germany

www.weidmueller.com

## Accessories

## Fuse holder



The fuse holder SIHA quickly turns a disconnect terminal into a fuse terminal: simply remove the disconnect lever and attach the fuse unit.

## General ordering data

|            |                            |   |
|------------|----------------------------|---|
| Type       | SIHA 3/G20/LD 60-150V      | Version   |
| Order No.  | <a href="#">7921590000</a> | Fuse holder for feed-through modular terminal, 2.31 mA, pluggable |
| GTIN (EAN) | 4032248322626              |   |
| Qty.       | 25 pc(s).                  |   |
| Type       | FSPG LED 100-250V BK       | Version   |
| Order No.  | <a href="#">2869700000</a> | Fuse holder for feed-through modular terminal, 6.3 A, Pivoting    |
| GTIN (EAN) | 4064675623816              |   |
| Qty.       | 25 pc(s).                  |   |
| Type       | SIHA 3/G20/LD 35-70V       | Version   |
| Order No.  | <a href="#">7921580000</a> | Fuse holder for feed-through modular terminal, 2.31 mA, pluggable |
| GTIN (EAN) | 4032248322619              |   |
| Qty.       | 25 pc(s).                  |   |
| Type       | FSPG LED 10-36V BK         | Version   |
| Order No.  | <a href="#">2869690000</a> | Fuse holder for feed-through modular terminal, 6.3 A, Pivoting    |
| GTIN (EAN) | 4064675623809              |   |
| Qty.       | 25 pc(s).                  |   |
| Type       | FSPG LED 30-70V BL         | Version   |
| Order No.  | <a href="#">2869760000</a> | Fuse holder for feed-through modular terminal, 6.3 A, Pivoting    |
| GTIN (EAN) | 4064675623885              |   |
| Qty.       | 25 pc(s).                  |   |
| Type       | FSPG BK                    | Version   |
| Order No.  | <a href="#">2869680000</a> | Fuse holder for feed-through modular terminal, 6.3 A, Pivoting    |
| GTIN (EAN) | 4064675623793              |   |
| Qty.       | 25 pc(s).                  |   |
| Type       | FSPG LED 60-150V BK        | Version   |
| Order No.  | <a href="#">2869720000</a> | Fuse holder for feed-through modular terminal, 6.3 A, Pivoting    |
| GTIN (EAN) | 4064675623830              |   |
| Qty.       | 25 pc(s).                  |   |
| Type       | FSPG LED 30-70V BK         | Version   |
| Order No.  | <a href="#">2869710000</a> | Fuse holder for feed-through modular terminal, 6.3 A, Pivoting    |
| GTIN (EAN) | 4064675623823              |   |
| Qty.       | 25 pc(s).                  |   |
| Type       | SIHA 3/G20/LD 140-250V     | Version   |
| Order No.  | <a href="#">7921600000</a> | Fuse holder for feed-through modular terminal, 2.31 mA, pluggable |
| GTIN (EAN) | 4032248322633              |   |
| Qty.       | 25 pc(s).                  |   |
| Type       | SIHA 3/G20                 | Version   |
| Order No.  | <a href="#">7921560000</a> | Fuse holder for feed-through modular terminal, pluggable          |
| GTIN (EAN) | 4032248264643              |   |
| Qty.       | 25 pc(s).                  |   |

**W2T 4 DT-FT-PE****Weidmüller Interface GmbH & Co. KG**

Klingenbergstraße 26

D-32758 Detmold

Germany

[www.weidmueller.com](http://www.weidmueller.com)**Accessories**

|            |                            |   |
|------------|----------------------------|---|
| Type       | FSPG LED 100-250V BL       | Version   |
| Order No.  | <a href="#">2869750000</a> | Fuse holder for feed-through modular terminal, 6.3 A, Pivoting    |
| GTIN (EAN) | 4064675623878              |   |
| Qty.       | 25 pc(s).                  |   |
| Type       | FSPG BL                    | Version   |
| Order No.  | <a href="#">2869730000</a> | Fuse holder for feed-through modular terminal, 6.3 A, Pivoting    |
| GTIN (EAN) | 4064675623854              |   |
| Qty.       | 25 pc(s).                  |   |
| Type       | FSPG LED 10-36V BL         | Version   |
| Order No.  | <a href="#">2869740000</a> | Fuse holder for feed-through modular terminal, 6.3 A, Pivoting    |
| GTIN (EAN) | 4064675623861              |   |
| Qty.       | 25 pc(s).                  |   |
| Type       | SIHA 3/G20/LD 10-36V       | Version   |
| Order No.  | <a href="#">7921570000</a> | Fuse holder for feed-through modular terminal, 2.31 mA, pluggable |
| GTIN (EAN) | 4032248322503              |   |
| Qty.       | 25 pc(s).                  |   |
| Type       | FSPG LED 60-150V BL        | Version   |
| Order No.  | <a href="#">2869770000</a> | Fuse holder for feed-through modular terminal, 6.3 A, Pivoting    |
| GTIN (EAN) | 4064675623892              |   |
| Qty.       | 25 pc(s).                  |   |