

**CABTITE FRFT 16/8****Weidmüller Interface GmbH & Co. KG**

Klingenbergstraße 26

D-32758 Detmold

Germany

[www.weidmueller.com](http://www.weidmueller.com)**Similar to illustration**

The frame, fabricated from a single piece, is quick and easy to assemble and consists of dimensionally stable, fibre-glass reinforced plastic. The captive foamed seal guarantees effective IP66 sealing in accordance with DIN EN 60529, even on painted and rough surfaces.

**General ordering data**

Version	Frame, Cabtite (cable entry system), Polyamide, glass fibre-reinforced, Deep black, Height: 70 mm, Width: 81 mm, Depth: 19.6 mm, -40 °C...120 °C, IP66
Order No.	<a href="#">2891510000</a>
Type	CABTITE FRFT 16/8
GTIN (EAN)	4064675880608
Qty.	1 pc(s).

## CABTITE FRFT 16/8

Weidmüller Interface GmbH &amp; Co. KG

Klingenbergstraße 26

D-32758 Detmold

Germany

www.weidmueller.com

## Technical data

## Dimensions and weights

Depth	19.6 mm	Depth (inches)	0.772 inch
Height	70 mm	Height (inches)	2.756 inch
Width	81 mm	Width (inches)	3.189 inch
Net weight	79 g		

## Temperatures

Operating temperature	-40 °C...120 °C
-----------------------	-----------------

## General information

Halogen	No, halogen-free	Material	Polyamide, glass fibre-reinforced
Opening length	91 mm	Opening width	36 mm
Protection class (UL)	Type 12, Type 4X	Protection degree	IP66
Sealing		Sealing element	2 large sealing elements or 4 small sealing elements or 1 large sealing element and 4 small sealing elements or 8 small sealing elements
	TPE		
Silicone	No	Tightening torque	3 Nm
UL 94 flammability rating	V-0		

## Classifications

ETIM 6.0	EC002624	ETIM 7.0	EC002624
ETIM 8.0	EC002624	ETIM 9.0	EC002624
ECLASS 9.0	27-18-28-15	ECLASS 9.1	27-18-92-65
ECLASS 10.0	27-18-28-15	ECLASS 11.0	27-18-28-15
ECLASS 12.0	27-18-28-15	ECLASS 13.0	27-18-28-15

## Approvals

Approvals



ROHS	Conform
UL File Number Search	UL Website
Certificate No. (cURus)	E223801

## Downloads

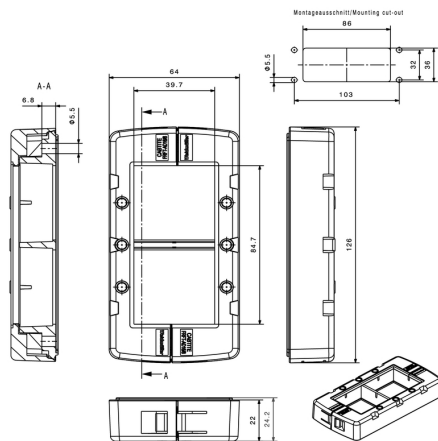
Approval/Certificate/Document of Conformity	<a href="#">EU Declaration of Conformity - Cable entry system</a>
Engineering Data	<a href="#">CAD data – STEP</a>
User Documentation	<a href="#">INSTR CABTITE FRFT D/EN</a>
Catalogues	<a href="#">Catalogues in PDF-format</a>

## CABTITE FRFT 16/8

**Weidmüller Interface GmbH & Co. KG**  
Klingenbergstraße 26  
D-32758 Detmold  
Germany

[www.weidmueller.com](http://www.weidmueller.com)

## Drawings



## CABTITE FRFT 16/8

Weidmüller Interface GmbH &amp; Co. KG

Klingenbergstraße 26

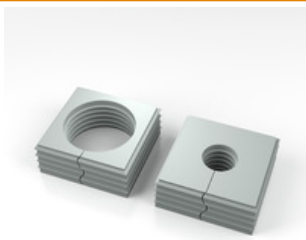
D-32758 Detmold

Germany

www.weidmueller.com

## Accessories

## SE large 40x40mm in grey



Whether a large or small cable diameter – Cabtite always offers the right seal insert.

The conical shape of the sealing elements allows the previously positioned snap-in grid inlays to be pushed in easily from the inside to the outside. It reliably seals intermediate spaces and provides strain relief in accordance with DIN EN 62444. The seal inserts combined with the frames achieve an IP 66 degree of protection. As a result of its slotted design with wave cut, it is especially suitable for pre-assembled cables.

- The black seal inserts are designed for a particularly high operating temperature and offer fire safety class UL 94 HB
- The grey sealing elements comply with fire safety class UL 94 V0 and are therefore suitable for the demands of the railway industry
- By using multiple inserts, two or more cables, as well as special cables, can be passed through a sealing element

## General ordering data

Type	CABTITE BSE LRG GY	Version
Order No.	<a href="#">2584520000</a>	Sealing element, Cabtite (cable entry system), TPE, Light Grey, Height: 42.8 mm, Width: 42.8 mm, Depth: 17.7 mm, -40 °C...90 °C, IP66
GTIN (EAN)	4050118616330	
Qty.	10 pc(s).	

Type	CABTITE SE 19-20 LRG GY	Version
Order No.	<a href="#">2584460000</a>	Sealing element, Cabtite (cable entry system), TPE, Light Grey, Height: 42.8 mm, Width: 42.8 mm, Depth: 17.7 mm, -40 °C...90 °C, IP66
GTIN (EAN)	4050118616491	
Qty.	10 pc(s).	

## Fixing material



The Cabtite cable entry system offers maximum flexibility in the cable management of control cabinets, enclosures and machines, while at the same time saving time, as well as providing secure sealing and strain relief for pre-terminated and non-terminated cables.

Cabtite's modular design of frame, grid inlays and sealing elements enables rapid configuration of cut-outs for pre-terminated cables - without the use of tools and with a reliable sealing of IP66 according to DIN EN 60529. Frame. Inlay. Sealing element. Three basic components in the modular system guarantee highest flexibility, variability and diversity of variants.

## General ordering data

Type	CABTITE SC M5X25 SET	Version
Order No.	<a href="#">2635120000</a>	Mounting screw, Cabtite (cable entry system), Stainless steel, rust-proof, silver, Height: 30 mm, Width: 8.5 mm, Depth: 8.5 mm
GTIN (EAN)	4050118662160	
Qty.	1 pc(s).	

## CABTITE FRFT 16/8

Weidmüller Interface GmbH &amp; Co. KG

Klingenbergstraße 26

D-32758 Detmold

Germany

www.weidmueller.com

## Accessories

## Blanking plug

The blanking plugs are used for the safe closing of  
unneeded cable passages in the sealing elements.



## General ordering data

Type	CABTITE BP 8MM PA	Version
Order No.	<a href="#">2652360000</a>	Blind plug, Cabtite (cable entry system), Polyamide, white, Height: 16
GTIN (EAN)	4050118662467	mm, Width: 8 mm, Depth: 16 mm, -40 °C...120 °C, IP66
Qty.	25 pc(s).	
Type	CABTITE BP 10MM PA	Version
Order No.	<a href="#">2652380000</a>	Blind plug, Cabtite (cable entry system), Polyamide, white, Height: 16
GTIN (EAN)	4050118662481	mm, Width: 10 mm, Depth: 16 mm, -40 °C...120 °C, IP66
Qty.	25 pc(s).	
Type	CABTITE BP 6MM PA	Version
Order No.	<a href="#">2652340000</a>	Blind plug, Cabtite (cable entry system), Polyamide, white, Height: 16
GTIN (EAN)	4050118661842	mm, Width: 6 mm, Depth: 16 mm, -40 °C...120 °C, IP66
Qty.	25 pc(s).	
Type	CABTITE BP 5MM PA	Version
Order No.	<a href="#">2652330000</a>	Blind plug, Cabtite (cable entry system), Polyamide, white, Height: 12
GTIN (EAN)	4050118661835	mm, Width: 5 mm, Depth: 12 mm, -40 °C...120 °C, IP66
Qty.	25 pc(s).	
Type	CABTITE BP 9MM PA	Version
Order No.	<a href="#">2652370000</a>	Blind plug, Cabtite (cable entry system), Polyamide, white, Height: 16
GTIN (EAN)	4050118662474	mm, Width: 9 mm, Depth: 16 mm, -40 °C...120 °C, IP66
Qty.	25 pc(s).	
Type	CABTITE BP 7MM PA	Version
Order No.	<a href="#">2652350000</a>	Blind plug, Cabtite (cable entry system), Polyamide, white, Height: 16
GTIN (EAN)	4050118662450	mm, Width: 7 mm, Depth: 16 mm, -40 °C...120 °C, IP66
Qty.	25 pc(s).	

## CABTITE FRFT 16/8

Weidmüller Interface GmbH &amp; Co. KG

Klingenbergstraße 26

D-32758 Detmold

Germany

www.weidmueller.com

## Accessories

## Rectangular splitting stamp for heavy-duty connectors



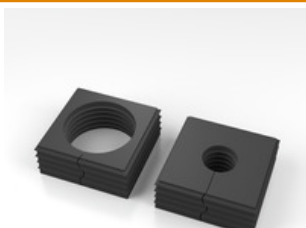
Weidmüller punching tools should be your first choice for making cut-outs in your electrical cabinets!

- PG cable glands
- M cable glands
- Special cable glands

## General ordering data

Type	KOK-91X36	Version
Order No.	<a href="#">9204860000</a>	Sheet holes
GTIN (EAN)	4032248693795	
Qty.	1 pc(s).	

## SE large 40x40mm in black



Whether a large or small cable diameter – Cabtite always offers the right seal insert.

The conical shape of the sealing elements allows the previously positioned snap-in grid inlays to be pushed in easily from the inside to the outside. It reliably seals intermediate spaces and provides strain relief in accordance with DIN EN 62444. The seal inserts combined with the frames achieve an IP 66 degree of protection. As a result of its slotted design with wave cut, it is especially suitable for pre-assembled cables.

- The black seal inserts are designed for a particularly high operating temperature and offer fire safety class UL 94 HB
- The grey sealing elements comply with fire safety class UL 94 V0 and are therefore suitable for the demands of the railway industry
- By using multiple inserts, two or more cables, as well as special cables, can be passed through a sealing element

## General ordering data

Type	CABTITE CSE 7-24 LRG BK	Version
Order No.	<a href="#">2583500000</a>	Sealing element, Cabtite (cable entry system), TPE, Deep black,
GTIN (EAN)	4050118615975	Height: 42.8 mm, Width: 42.8 mm, Depth: 63 mm, -40 °C... 120 °C,
Qty.	10 pc(s).	IP66
Type	CABTITE BSE LRG BK	Version
Order No.	<a href="#">2583900000</a>	Sealing element, Cabtite (cable entry system), TPE, Deep black,
GTIN (EAN)	4050118616378	Height: 42.8 mm, Width: 42.8 mm, Depth: 17.7 mm, -40 °C... 120 °C,
Qty.	10 pc(s).	IP66

## CABTITE FRFT 16/8

Weidmüller Interface GmbH &amp; Co. KG

Klingenbergstraße 26

D-32758 Detmold

Germany

www.weidmueller.com

## Accessories

## Inlays

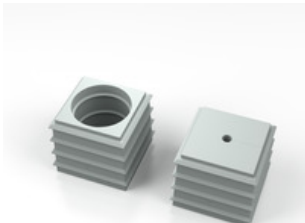


The pluggable click inlays allow the frame openings to be configured as required for use with small or large sealing elements. An audible "click" confirms correct installation. This means that the Cabtite cable entry system can be variably configured for different requirements (cables, conductors, hoses, pneumatic and hydraulic lines).

## General ordering data

Type	CABTITE GI X BK	Version
Order No.	<a href="#">2584290000</a>	Inlay, Cabtite (cable entry system), Polyamide, glass fibre-reinforced,
GTIN (EAN)	4050118616439	Deep black, Height: 44 mm, Width: 44 mm, Depth: 17.5 mm, -40 °C...
Qty.	5 pc(s).	120 °C, IP66

## SE small 20x20mm in grey



Whether a large or small cable diameter – Cabtite always offers the right seal insert.

The conical shape of the sealing elements allows the previously positioned snap-in grid inlays to be pushed in easily from the inside to the outside. It reliably seals intermediate spaces and provides strain relief in accordance with DIN EN 62444. The seal inserts combined with the frames achieve an IP 66 degree of protection. As a result of its slotted design with wave cut, it is especially suitable for pre-assembled cables.

- The black seal inserts are designed for a particularly high operating temperature and offer fire safety class UL 94 HB
- The grey sealing elements comply with fire safety class UL 94 V0 and are therefore suitable for the demands of the railway industry
- By using multiple inserts, two or more cables, as well as special cables, can be passed through a sealing element

## General ordering data

Type	CABTITE SE 2/5-6 SML GY	Version
Order No.	<a href="#">2584890000</a>	Sealing element, Cabtite (cable entry system), TPE, Light Grey, Height:
GTIN (EAN)	4050118616781	20.3 mm, Width: 20.3 mm, Depth: 17.7 mm, -40 °C...90 °C, IP66
Qty.	10 pc(s).	
Type	CABTITE SE 5-6 SML GY	Version
Order No.	<a href="#">2583450000</a>	Sealing element, Cabtite (cable entry system), TPE, Light Grey, Height:
GTIN (EAN)	4050118616538	20.3 mm, Width: 20.3 mm, Depth: 17.7 mm, -40 °C...90 °C, IP66
Qty.	10 pc(s).	
Type	CABTITE BSE SML GY	Version
Order No.	<a href="#">2583350000</a>	Sealing element, Cabtite (cable entry system), TPE, Light Grey, Height:
GTIN (EAN)	4050118615609	20.3 mm, Width: 20.3 mm, Depth: 17.7 mm, -40 °C...90 °C, IP66
Qty.	10 pc(s).	

## CABTITE FRFT 16/8

Weidmüller Interface GmbH &amp; Co. KG

Klingenbergstraße 26

D-32758 Detmold

Germany

www.weidmueller.com

## Accessories

Type	CABTITE SE 6-7 SML GY	Version
Order No.	<a href="#">2583460000</a>	Sealing element, Cabtite (cable entry system), TPE, Light Grey, Height:
GTIN (EAN)	4050118616668	20.3 mm, Width: 20.3 mm, Depth: 17.7 mm, -40 °C...90 °C, IP66
Qty.	10 pc(s).	

## Shield connection rails

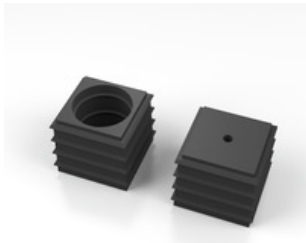


In combination with a large number of different shield connection clamps (KLBÜ), the shield connection rails enable practical, uncomplicated and fast shielding of cables.

## General ordering data

Type	CABTITE CR 16/8 EMV	Version
Order No.	<a href="#">2583910000</a>	Shield connection rail, Cabtite (cable entry system), Steel, galvanized,
GTIN (EAN)	4050118647051	silver, Height: 35.23 mm, Width: 113 mm, Depth: 16 mm
Qty.	10 pc(s).	

## SE small 20x20mm in black



Whether a large or small cable diameter – Cabtite always offers the right seal insert.

The conical shape of the sealing elements allows the previously positioned snap-in grid inlays to be pushed in easily from the inside to the outside. It reliably seals intermediate spaces and provides strain relief in accordance with DIN EN 62444. The seal inserts combined with the frames achieve an IP 66 degree of protection. As a result of its slotted design with wave cut, it is especially suitable for pre-assembled cables.

- The black seal inserts are designed for a particularly high operating temperature and offer fire safety class UL 94 HB
- The grey sealing elements comply with fire safety class UL 94 V0 and are therefore suitable for the demands of the railway industry
- By using multiple inserts, two or more cables, as well as special cables, can be passed through a sealing element

## General ordering data

Type	CABTITE SE 7-8 SML BK	Version
Order No.	<a href="#">2584670000</a>	Sealing element, Cabtite (cable entry system), TPE, Deep black,
GTIN (EAN)	4050118616989	Height: 20.3 mm, Width: 20.3 mm, Depth: 17.7 mm, -40 °C...120 °C,
Qty.	10 pc(s).	IP66



## CABTITE FRFT 16/8

Weidmüller Interface GmbH &amp; Co. KG

Klingenbergstraße 26

D-32758 Detmold

Germany

www.weidmueller.com

## Accessories

Type	CABTITE SE 4/4-5 SML BK	Version
Order No.	<a href="#">2583560000</a>	Sealing element, Cabtite (cable entry system), TPE, Deep black,
GTIN (EAN)	4050118616897	Height: 20.3 mm, Width: 20.3 mm, Depth: 17.7 mm, -40 °C...120 °C,
Qty.	10 pc(s).	IP66
Type	CABTITE SE 9-10 SML BK	Version
Order No.	<a href="#">2584080000</a>	Sealing element, Cabtite (cable entry system), TPE, Deep black,
GTIN (EAN)	4050118616309	Height: 20.3 mm, Width: 20.3 mm, Depth: 17.7 mm, -40 °C...120 °C,
Qty.	10 pc(s).	IP66
Type	CABTITE BSE SML BK	Version
Order No.	<a href="#">2584790000</a>	Sealing element, Cabtite (cable entry system), TPE, Deep black,
GTIN (EAN)	4050118616057	Height: 20.3 mm, Width: 20.3 mm, Depth: 17.7 mm, -40 °C...120 °C,
Qty.	10 pc(s).	IP66

## Locking frame



The frame, fabricated from a single piece, is quick and easy to assemble and consists of dimensionally stable, fibre-glass reinforced plastic. The captive foamed seal guarantees effective IP66 sealing in accordance with DIN EN 60529, even on painted and rough surfaces.

## General ordering data

Type	CABTITE OFRL BK	Version
Order No.	<a href="#">2907560000</a>	Locking frame, Cabtite (cable entry system), Polyamide, Deep black,
GTIN (EAN)	4099986539549	Height: 77 mm, Width: 9 mm, Depth: 62 mm, -40 °C...120 °C
Qty.	20 pc(s).	