

**IE-FCM-SP0-C****Weidmüller Interface GmbH & Co. KG**

Klingenbergstraße 26

D-32758 Detmold

Germany

[www.weidmueller.com](http://www.weidmueller.com)**SPElink®**

Service interface FrontCom® Micro with SPE coupling  
acc. to IEC 63 171-2 in IP65

Single pair Ethernet is a technology that only requires one pair of wires to transmit data and power. The resulting benefits will make SPE the preferred network at the field level and beyond.

**Advantages of Single Pair Ethernet**

- Consistent: Single Pair Ethernet enables uniform Ethernet-based communication from the sensor to the cloud
- Future-proof: key technology for Industry 4.0 and IIoT
- Flexible: ranges of up to 1000 m and transmission properties of up to 1 Gbps enable use across applications
- Innovative: lighter, less space required, and reduced installation effort

**General ordering data**

Version	FrontCom Micro SPE coupling, 2-core
Order No.	<a href="#">2870820000</a>
Type	IE-FCM-SP0-C
GTIN (EAN)	4064675635291
Qty.	10 pc(s).

## IE-FCM-SP0-C

Weidmüller Interface GmbH &amp; Co. KG

Klingenbergstraße 26

D-32758 Detmold

Germany

www.weidmueller.com

## Technical data

## Dimensions and weights

Wall thickness, min.	1 mm	Wall thickness, max.	5 mm
Net weight	17.023 g		

## Temperatures

Operating temperature	-40 °C...70 °C
-----------------------	----------------

## Electrical properties

Dielectric strength, contact / contact	≥ 1000 V DC	Dielectric strength, contact / shield	2250 V DC
PoE / PoE+	PoDL acc. to IEEE 802.3bu / cg	Rated current	3.5 A at 0°C

## General standards

Connector standard	IEC 63171-2
--------------------	-------------

## Classifications

ETIM 6.0	EC001031	ETIM 7.0	EC001031
ETIM 8.0	EC001031	ETIM 9.0	EC001031
ECLASS 9.0	27-18-27-02	ECLASS 9.1	27-18-27-90
ECLASS 10.0	27-18-27-02	ECLASS 11.0	27-18-27-02
ECLASS 12.0	27-18-28-92	ECLASS 13.0	27-18-28-92

## Downloads

Product Change Notification	<a href="#">Technical change of the housing of the FrontCom® Micro</a> <a href="#">Technische Änderung des Gehäuses der FrontCom® Micro</a>
Catalogues	<a href="#">Catalogues in PDF-format</a>

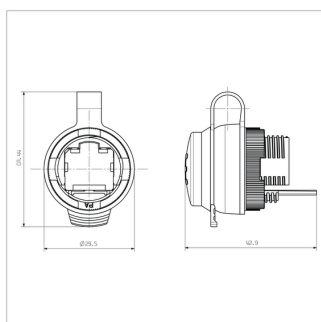
## IE-FCM-SP0-C

**Weidmüller Interface GmbH & Co. KG**  
Klingenbergstraße 26  
D-32758 Detmold  
Germany

[www.weidmueller.com](http://www.weidmueller.com)

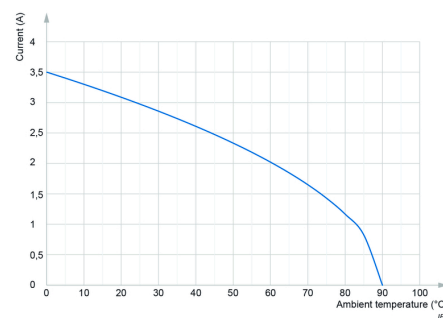
## Drawings

### Dimensioned drawing

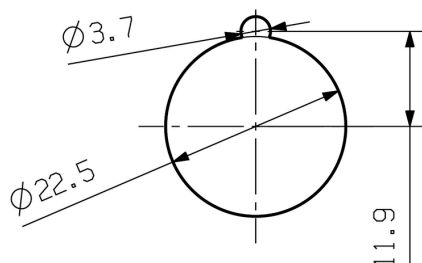


### Derating curve

Level I gem. IEC 63171



### Installation cut-out



## IE-FCM-SP0-C

Weidmüller Interface GmbH &amp; Co. KG

Klingenbergstraße 26

D-32758 Detmold

Germany

[www.weidmueller.com](http://www.weidmueller.com)

## Accessories

## Complementary products



SM is a MultiCard marker for labelling control and signalling devices. The tags are clipped into the carriers or attached by means of the adhesive film already fitted to them. Customised tags can be created with the PrintJet CONNECT or Plotter marking systems.

- Users can quickly produce tags to suit their needs
- No need to stock expensive standard tags
- Highly resistant printing quality when using the PrintJet as a substitute for engraving
- For extreme demands, we recommend the ETO SM protective film
- Holders can be used for the 22-mm or 30-mm-diameter push-buttons from Siemens, ABB, Moeller and Télémécanique

**For custom printing:** Please send us a file of our labeling software M-Print PRO or M-Print PRO Online (without installation) for your labeling specifications.

## General ordering data

Type	SM-H 27/18 SW	Version
Order No.	<a href="#">1716630000</a>	SwitchMark, Accessories, 48 x 27 mm, black
GTIN (EAN)	4008190343194	
Qty.	25 pc(s).	