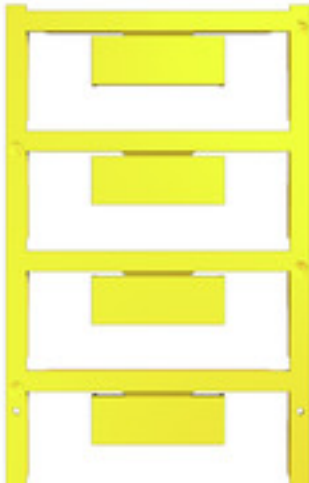


WAD 12N MC NE GE**Weidmüller Interface GmbH & Co. KG**

Klingenbergstraße 26

D-32758 Detmold

Germany

www.weidmueller.com

The WAD connector marker is suitable for W-series terminals and for the WEW 35/2 and ZEW 35/2 end brackets. The markers are available as blank markers, with custom printing or standard print with lightning symbol. The WAD MultiCard markers are suitable for labelling with PrintJet CONNECT printers.

For custom printing: Please send us a file of our labeling software M-Print PRO or M-Print PRO Online (without installation) for your labeling specifications.

General ordering data

Version	Group markers, Cover, 33.3 x 12 mm, WDU 16N, yellow
Order No.	2866650000
Type	WAD 12N MC NE GE
GTIN (EAN)	4064675604860
Qty.	32 pc(s).

WAD 12N MC NE GE**Weidmüller Interface GmbH & Co. KG**

Klingenbergstraße 26

D-32758 Detmold

Germany

www.weidmueller.com**Technical data****Dimensions and weights**

Height	33.3 mm	Height (inches)	1.311 inch
Width	12 mm	Width (inches)	0.472 inch
Net weight	1.238 g		

Temperatures

Operating temperature range	-40...100 °C
-----------------------------	--------------

General data

Application/manufacture	WDU 16N	
Colour	yellow	
Halogen	No	
Material	Polyamide 66	
Number of markers per combination	1 MultiCard = Cover	
Number of markers per packaging unit	Form of supply	MultiCard
Operating temperature range	-40... 100 °C	
Operating temperature range, max.	100 °C	
Operating temperature range, min.	-40 °C	
Orientation of print	horizontal and vertical	
Printed characters	neutral	
UL 94 flammability rating	V-2	
Width	12 mm	

Classifications

ETIM 6.0	EC000761	ETIM 7.0	EC000761
ETIM 8.0	EC000761	ETIM 9.0	EC000761
ECLASS 9.0	27-14-11-37	ECLASS 9.1	27-14-11-37
ECLASS 10.0	27-14-11-37	ECLASS 11.0	27-28-11-01
ECLASS 12.0	27-28-11-01	ECLASS 13.0	27-28-11-01

Downloads

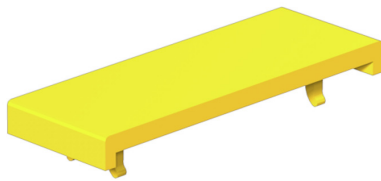
Catalogues	Catalogues in PDF-format
------------	--

WAD 12N MC NE GE

Weidmüller Interface GmbH & Co. KG
Klingenbergstraße 26
D-32758 Detmold
Germany

www.weidmueller.com

Drawings



Drawing