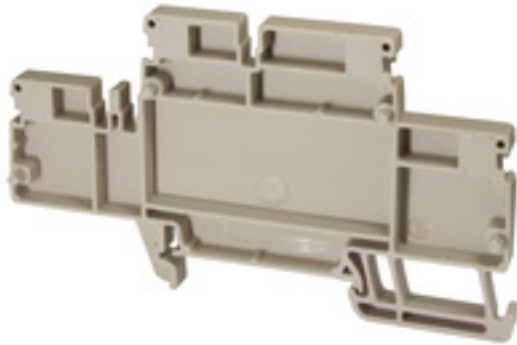


ASP 2T 2.5**Weidmüller Interface GmbH & Co. KG**

Klingenbergstraße 26

D-32758 Detmold

Germany

www.weidmueller.com

A partition plate is used for the optical separation of circuits or used for electrical isolation from neighbouring cross-connectors. In contrast to the end plate, the contour can be larger than the adjacent terminal blocks. However, it should not be smaller, as otherwise the required clearance and creepage distances within the application can no longer be maintained.

General ordering data

Version	A-series, End plate
Order No.	2820650000
Type	ASP 2T 2.5
GTIN (EAN)	4064675357261
Qty.	20 pc(s).

ASP 2T 2.5**Weidmüller Interface GmbH & Co. KG**

Klingenbergstraße 26

D-32758 Detmold

Germany

www.weidmueller.com**Technical data****Dimensions and weights**

Depth	50.5 mm	Depth (inches)	1.988 inch
Height	90 mm	Height (inches)	3.543 inch
Width	5.1 mm	Width (inches)	0.201 inch
Net weight	5.596 g		

Temperatures

Continuous operating temp., min.	-60 °C	Continuous operating temp., max.	130 °C
----------------------------------	--------	----------------------------------	--------

Material data

Material	Wemid	Colour	dark beige
UL 94 flammability rating	V-0		

Additional technical data

Snap-on	Yes
---------	-----

Classifications

ETIM 6.0	EC000886	ETIM 7.0	EC000886
ETIM 8.0	EC000886	ETIM 9.0	EC000886
ECLASS 9.1	27-14-11-33	ECLASS 10.0	27-14-11-33
ECLASS 11.0	27-14-11-33	ECLASS 12.0	27-14-11-33
ECLASS 13.0	27-25-03-01		

Approvals

Approvals	
ROHS	Conform

Downloads

Approval/Certificate/Document of Conformity	Confirmation of Standards EN 45545-2_2020-10
Engineering Data	CAD data – STEP
Catalogues	Catalogues in PDF-format