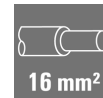


PVN1M2I4S1FXVX00TXPX11**Weidmüller Interface GmbH & Co. KG**

Klingenbergstraße 26

D-32758 Detmold

Germany

www.weidmueller.com**General ordering data**

Version	Photovoltaics, Combiner Box, Fireman's switch, 2 MPP's, 2 Inputs / 1 Output per MPP, Remote disconnecter, Cable gland, 1100 V
Order No.	2778870000
Type	PVN1M2I4S1FXVX00TXPX11
GTIN (EAN)	4064675047629
Qty.	1 pc(s).

PVN1M2I4S1FXVX00TXPX11**Weidmüller Interface GmbH & Co. KG**

Klingenbergstraße 26

D-32758 Detmold

Germany

www.weidmueller.com

Technical data**Dimensions and weights**

Depth	132 mm	Depth (inches)	5.197 inch
Height	346 mm	Height (inches)	13.622 inch
Width	200 mm	Width (inches)	7.874 inch
Net weight	2,586 g		

Temperatures

Ambient temperature	-20 °C...+50 °C	Humidity	5...95 %, no condensation
---------------------	-----------------	----------	---------------------------

Approvals and norms

Approvals	EN 61439-2, IEC 61439-2, OVE-Directive R 11-1:2022-05-01
-----------	--

Guarantee

Time interval	5 years
---------------	---------

Electrical characteristics

Current per Maximum Power Point, max. 50 A

Rated DC current per connection	Current per string, max.	44 A
Rated short-term current resistance	Rated current	55 A
Rated DC voltage	1,100 V	
Switching disconnector capacity	IEC 60947-3, DC-PV1	

Enclosure

Connection type string	Internal terminal (with cable gland feed-through)	Enclosure attachment	Via mounting feet
Impact resistance	IK08 in accordance with IEC 62208, IK10 in accordance with IEC 62262	Insulating material	Polyester glass-fibre reinforced, Polycarbonate
Switch disconnector execution	Remote disconnector inside enclosure	Type of mounting	Wall mounting, 4 screws

General data

Installation location	Protected outdoor area (>1 km from sea)	Protection degree	IP65
-----------------------	---	-------------------	------

Inputs

Amount of maximum power points	2 MPP		
DC Input + & -	Wire connection	Type of connection	PUSH IN
		Compatible cable cross-section	EN 50618:2015
		Wire cross-section, min.	2.5 mm ²
		Wire cross-section, max.	16 mm ²
Fuse type	Neither fuse cartridge nor holder		
Max. number of DC inputs	per Maximum Power Point 2 inputs connected in parallel		

PVN1M2I4S1FXVX00TXPX11
Weidmüller Interface GmbH & Co. KG

Klingenbergstraße 26

D-32758 Detmold

Germany

www.weidmueller.com
Technical data
Outputs

DC Output + & -	Wire connection	Type of connection	PUSH IN
		Compatible cable crosssection	TÜV 2 Pfg 1169/08.07
		Wire cross-section, min.	2.5 mm²
		Wire cross-section, max.	16 mm²
Max. number of DC outputs	per Maximum Power Point 1 output		

Remote disconnecter

Automatic reclosing after voltage drop	Yes		
Number of operating cycles	10,000		
Control voltage	100 V AC - 250 V AC 50/60Hz		
Remote disconnecter auxiliary contact	Cable entry	Number of cable entries	1
	Wire connection	Type of connection	Screw terminal connectors
		Flexible, max. H05(07) V-K	1.5 mm ²
		w. wire end ferrule, DIN 46228 pt 1, max.	1.5 mm ²
Remote disconnecter control contact	Cable entry	Number of cable entries	1
	Wire connection	Type of connection	Screw terminal connectors
		Flexible, max. H05(07) V-K	1.5 mm ²
		w. wire end ferrule, DIN 46228 pt 1, max.	1.5 mm ²
Type of power circuit disconnection	Under voltage tripping or manual switch operation		
Turn-off time	1.5 s		

Classifications

ETIM 6.0	EC002928	ETIM 7.0	EC002928
ETIM 8.0	EC003857	ETIM 9.0	EC003857
ECLASS 9.0	22-57-92-03	ECLASS 9.1	22-57-02-90
ECLASS 10.0	22-57-02-90	ECLASS 11.0	22-57-02-92
ECLASS 12.0	22-57-02-92	ECLASS 13.0	22-57-02-92

PVN1M2I4S1FXVX00TXPX11

Weidmüller Interface GmbH & Co. KG

Klingenbergstraße 26

D-32758 Detmold

Germany

www.weidmueller.com

Technical data

Tender specification sheets

Long specification

Automatic ON and OFF switching fireman switch for the connection to 2 MPP tracker in the inverter. Suitable for remote disconnection of the DC side by the fire department. Max. string voltage Uoc: 1100V

MPP1:
2 inputs, connection via M25 cable gland with 3x7mm Ø cable entry. PUSH IN connection / 2.5 - 6mm² single-wire, multi-wire, with/without ferrule.
1 output, connection via M25 cable gland with 3x7mm Ø cable entry. PUSH IN connection / 2.5 - 6mm² single-wire, multi-wire, with/without ferrule.
MPP2:
identical to MPP1

DC fireman switch:
Switching off by undervoltage tripping.
Automatic reconnection after the control voltage (230 V AC) is applied again.
With signal contact.

Connection of the fireman switch control line 230 VAC via cable glands (8-12mmØ) max. conductor cross-section: 1.5mm².
Connection of the signal contact 24 VDC via cable glands (8-12mmØ) max. conductor cross-section: 1.5mm².
Protection class: IP65.
All built into a glass fibre reinforced polyester housing. Dimensions HxWxD: 364x200x132mm.

Approval according to low voltage switchgear IEC 61439-1:2011 and EN 61439-2:2011

PVN1M2I4S1FXVX00TXPX11

Weidmüller Interface GmbH & Co. KG
Klingenbergstraße 26
D-32758 Detmold
Germany

www.weidmueller.com

Technical data

Environmental Product Compliance

REACH SVHC	Lead 7439-92-1
SCIP	bdab5698-6a20-4370-8e28-8810d882d01a

Important note

Product information

Intended use of the UPS: This UPS has been especially developed as a safety device for direct current (DC) photovoltaic installations. The DC disconnect switch is used to disconnect the connected strings of the installation in case of an emergency situation. Such an emergency situation could be in case of fire.

Normal operation: The UPS will automatically switch to the off position, breaking the DC connection between the solar panels and the inverter, after the AC power to the UPS is interrupted for longer than five seconds. The UPS will automatically switch to the on position, restoring the DC connection between the solar panels and the inverter, once the AC power to the UPS is restored longer than five seconds.

Special Operation: If the temperature inside the UPS enclosure exceeds the 100°C, the UPS will automatically switch to OFF to protect the internal components and create a safe situation. When the installation is checked and the UPS is not affected, the UPS can be switched ON again by removal and re-applying the AC voltage to the UPS. The UPS will also automatically switch to OFF if there is an internal failure. If this occurs please try to reset the UPS by removal and re-applying the AC voltage to the UPS.

Emergency switch not included. The SCIP number was assigned due to a lead content of more than 0.1 % of the net weight.

Safe use instruction according to ECHA:

The identification of the hazardous substance is sufficient to allow safe use of the article throughout its life cycle, including the service life, disassembly and waste/recycling phase

Approvals

Approvals



Downloads

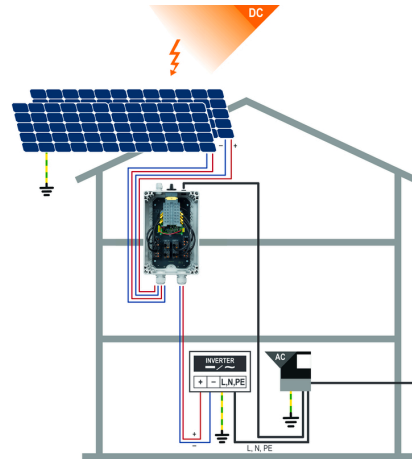
Approval/Certificate/Document of Conformity	PV Next RD Declaration of Conformity
Engineering Data	CAD data – STEP Application notes – Schematic Diagram for PV Next Fireman Switch
Technical Documentation	PVN1M2I4S1FXVX00TXPX11 CAD data – Schematic diagram
User Documentation	MANUAL PV NEXT RD DE/EN
White paper	Fact Sheet DE PV CB Lastentrennschalter Fact-Sheet EN PV CB Load break switch Fact Sheet DE PV Feuerwehrschanter Fact Sheet EN PV Fireman switch
Catalogues	Catalogues in PDF-format

PVN1M2I4S1FXVX00TXPX11

Weidmüller Interface GmbH & Co. KG
Klingenbergstraße 26
D-32758 Detmold
Germany

www.weidmueller.com

Drawings



PVN 1 M2 I6 S0 F3 V1 Q1 TX PX 10									
Series		Voltage		Power supply		Monitoring		Output Type	
PVN = PV Next		10 = 1kV		x = n/a		x = n/a		0 = GG	
VPU = PV Protect		11 = 1.1kV						1 = VVAC	
		15 = 1.5kV						2 = MCA-Exp 2	
Level		Inputs		Switch		Fuses		SPD	
1 = DC trunk box (L1)		1...12 inputs		x = n/a		3 = only fuse holders		0 = TYP II	
Series				0 = manual switch				1 = TYP I+II	
1 = 1 MPPT supported				1 = remote switch				X = No SPD	
2 = 2 MPPT supported									
3 = 3 MPPT supported									
4 = 4 MPPT supported									
6 = 6 MPPT supported									

PVN1M2I4S1FXVX00TXPX11**Weidmüller Interface GmbH & Co. KG**

Klingenbergstraße 26

D-32758 Detmold

Germany

www.weidmueller.com**Accessories****Crosshead screwdriver Phillips**

Crosshead screwdriver, Phillips, SDK PH DIN 5262, ISO 8764/2-PH, output to ISO 8764-PH, ChromTop tip, SoftFinish grip

General ordering data

Type	SDK PH3	Version
Order No.	9008500000	Screwdriver, Screwdriver
GTIN (EAN)	4032248056491	
Qty.	1 pc(s).	

Tools

- For flexible and solid conductors with special insulating materials
- High-quality stripping for industrial applications (complies with aircraft industry requirements)
- Specially shaped blades enable stripping of special types of insulation and conductor configurations
- Stripping length adjustable via end stop
- Very versatile thanks to interchangeable stripping units
- Stripping results reproduced accurately over and over again
- No damage to the conductor
- A long-lasting, reliable tool thanks to its sturdy design
- Integrated cutting function

General ordering data

Type	MULTI-STRIPAX PV	Version
Order No.	1190490000	Photovoltaics, Plug-in connector
GTIN (EAN)	4032248973262	
Qty.	1 pc(s).	

PVN1M2I4S1FXVX00TXPX11

Weidmüller Interface GmbH & Co. KG

Klingenbergstraße 26

D-32758 Detmold

Germany

www.weidmueller.com

Accessories

Slotted screwdriver



Slotted screwdriver with rounded blade SD DIN 5265, ISO 2380/2, output to DIN 5264, ISO 2380/1. ChromTop tip, SoftFinish grip

General ordering data

Type	SDS 0.6X3.5X100	Version
Order No.	9008330000	Screwdriver, Screwdriver
GTIN (EAN)	4032248056286	
Qty.	1 pc(s).	

Type	SDS 1.0X5.5X150	Version
Order No.	9008350000	Screwdriver, Screwdriver
GTIN (EAN)	4032248056316	
Qty.	1 pc(s).	

Y-Connector Cables



The Y or X cable is used to connect three or four elements of a PV system, such as the connection between PV panels, inverters and surge protection boxes. The cables are available in different connection variants.

General ordering data

Type	PVHYM+M+XXXX6W-15	Version
Order No.	2877860000	Photovoltaics, Y-Connector Cable, 1x WM4 C Male, 2x MC4 Female,
GTIN (EAN)	4064675666424	6mm², 1500 V
Qty.	1 pc(s).	

Type	PVHYM-M-XXXX6W+15	Version
Order No.	2877850000	Photovoltaics, Y-Connector Cable, 1x WM4 C Female, 2x MC4 Male,
GTIN (EAN)	4064675666417	6mm², 1500 V
Qty.	1 pc(s).	

PVN1M2I4S1FXVX00TXPX11**Weidmüller Interface GmbH & Co. KG**

Klingenbergstraße 26

D-32758 Detmold

Germany

www.weidmueller.com**Accessories****Cutting tools**

Cutting tools for conductors up to 8 mm, 12 mm, 14 mm and 22 mm outside diameter. The special blade geometry allows pinch-free cutting of copper and aluminium conductors with minimum physical effort. The cutting tools (KT 8 to KT 22) also come with VDE and GS-tested protective insulation up to 1,000 V in accordance with EN/IEC 60900.

General ordering data

Type	KT 14	Version
Order No.	1157820000	Cutting tools, Cutting tool for one-hand operation
GTIN (EAN)	4032248945344	
Qty.	1 pc(s).	

UV-resistant cable ties

UV-resistant polyamide 6.6 ensures long durability of our special cable ties even with strong UV radiation. Ideal for continuous outdoor use.

General ordering data

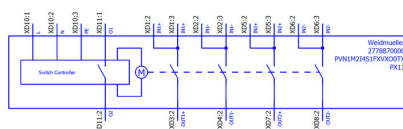
Type	CB-UVR 290/4,5 BK	Version
Order No.	2659350000	Cable ties, 4.5 x 290 mm, Polyamide 66, 220 N
GTIN (EAN)	4050118682816	
Qty.	100 pc(s).	

PVN1M2I4S1FXVX00TXPX11

Weidmüller Interface GmbH & Co. KG
Klingenbergstraße 26
D-32758 Detmold
Germany

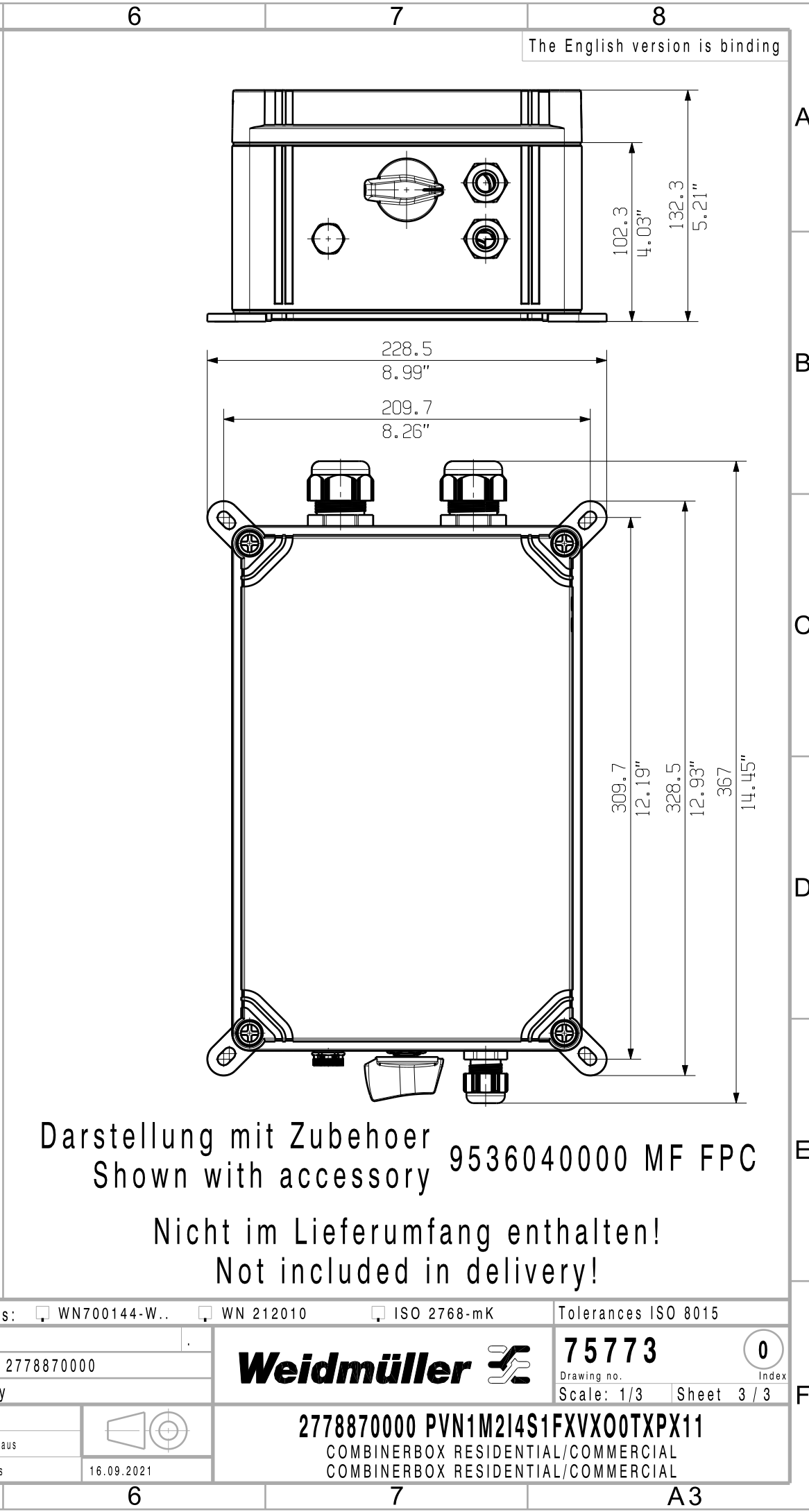
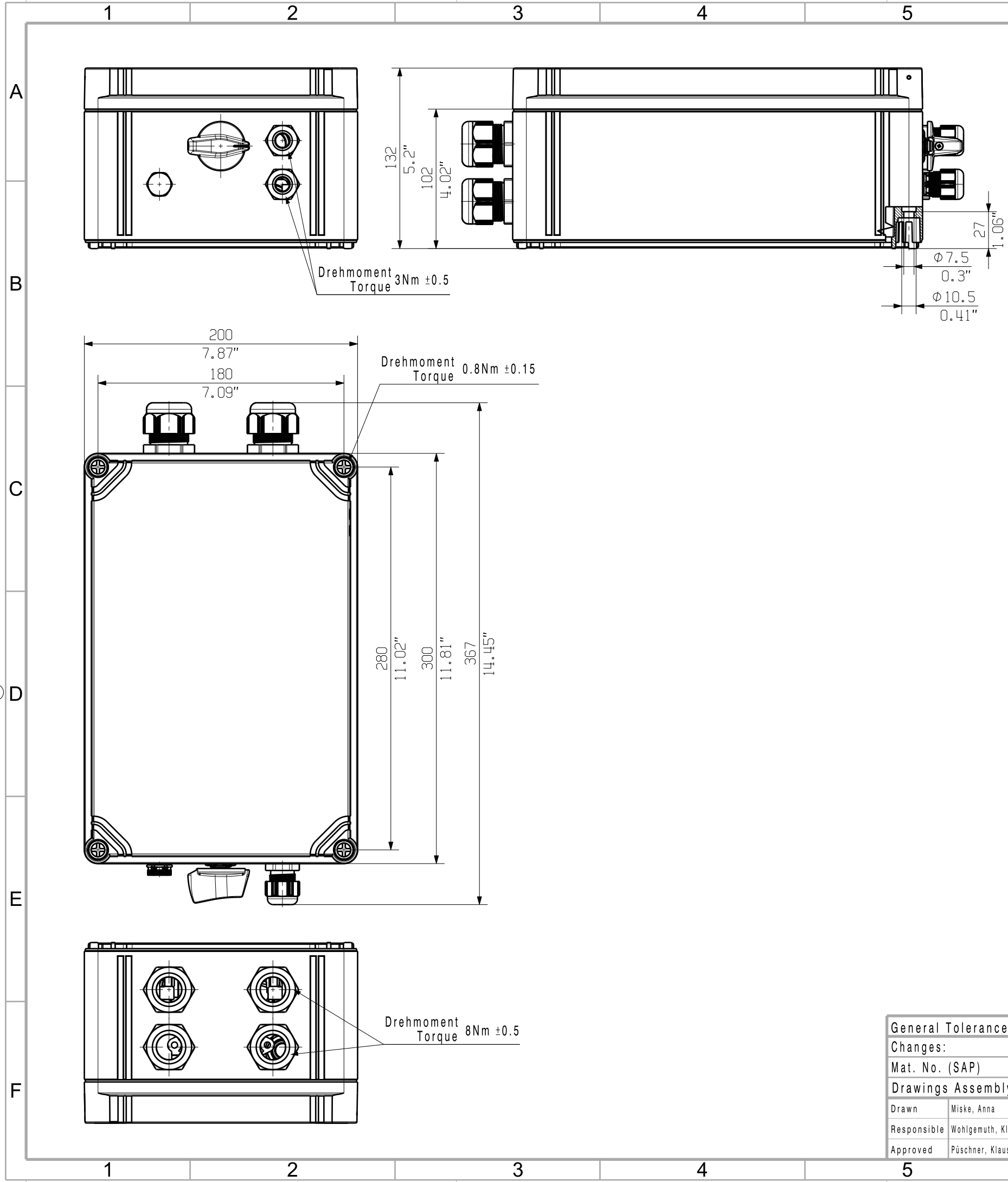
www.weidmueller.com

Drawings



The reproduction, distribution and utilization of this document as well as the communication of its contents to others without explicit authorization is prohibited. Offenders will be held liable for the payment of damages. Weidmüller exclusively reserves the right to file for patents, utility models or designs.

© Weidmüller Interface GmbH & Co. KG



Darstellung mit Zubehoer
Shown with accessory 9536040000 MF FPC

Nicht im Lieferumfang enthalten!
Not included in delivery!

General Tolerances: <input type="checkbox"/> WN700144-W.. <input type="checkbox"/> WN 212010 <input type="checkbox"/> ISO 2768-mK			Tolerances ISO 8015	
Changes: .			<div><div>75773</div><div>Drawing no. Index</div></div>	
Mat. No. (SAP) 2778870000			<div><div><div><div><div></div><div></div></div></div><div><div></div><div></div></div></div><div><div></div><div></div></div></div>	
Drawings Assembly				
Drawn	Miske, Anna		<div><div>2778870000 PVN1M2I4S1FXVX00TXPX11</div><div>COMBINERBOX RESIDENTIAL/COMMERCIAL</div><div>COMBINERBOX RESIDENTIAL/COMMERCIAL</div></div>	
Responsible	Wohlgemuth, Klaus			
Approved	Püschner, Klaus			
16.09.2021				