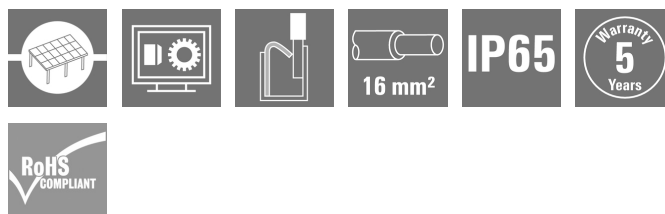


PVN DC 2I 1O 1MPP RD CG 11**Weidmüller Interface GmbH & Co. KG**

Klingenbergstraße 26

D-32758 Detmold

Germany

www.weidmueller.com**For safe remote shutdown**

Rooftop photovoltaic systems can require a disconnection device at the point where the cables enter into the building, that is connected to the power grid in the building. This allows the fire brigade to carry out their work in an emergency without being unnecessarily endangered. When the power supply is restored, the PV Next Fireman Switch automatically reconnects the PV strings.

General ordering data

Version	Photovoltaics, Combiner Box, Fireman's switch, PV Next, 1 MPP, 2 Inputs / 1 Output per MPP, Remote disconnecter, Cable gland, 1100 V
Order No.	2778850000
Type	PVN DC 2I 1O 1MPP RD CG 11
GTIN (EAN)	4064675047605
Qty.	1 pc(s).

PVN DC 2I 10 1MPP RD CG 11
Weidmüller Interface GmbH & Co. KG

Klingenbergstraße 26

D-32758 Detmold

Germany

www.weidmueller.com
Technical data
Dimensions and weights

Depth	132 mm	Depth (inches)	5.197 inch
Height	364 mm	Height (inches)	14.331 inch
Width	200 mm	Width (inches)	7.874 inch
Net weight	2,258 g		

Temperatures

Ambient temperature	-20 °C...50 °C	Humidity	5...95 %, no condensation
---------------------	----------------	----------	---------------------------

Approvals and norms

Approvals	EN 61439-2, IEC 61439-2, OVE-Directive R 11-1:2022-05-01
-----------	--

Guarantee

Time interval	5 years
---------------	---------

Electrical characteristics

Current per Maximum Power Point, max. 50 A

Rated DC voltage		1,100 V
Rated short-term current resistance	Rated current	62.5 A

Enclosure

Connection type string	Internal terminal (with cable gland feed-through)	Enclosure attachment	Via mounting feet
Impact resistance	IK08 in accordance with IEC 62208, IK10 in accordance with IEC 62262	Insulating material	Polyester glass-fibre reinforced, Polycarbonate
Protection class	II	Type of mounting	Wall mounting, 4 screws

General data

Installation location	Protected outdoor area (>1 km from sea)	Protection degree	IP65
-----------------------	---	-------------------	------

Inputs

Amount of maximum power points (MPP)	1		
DC Input + & -	Wire connection	Type of connection	PUSH IN
		Compatible cable crosssection	EN 50618:2015
		Wire cross-section, min.	2.5 mm²
		Wire cross-section, max.	16 mm²
Fuse type	Neither fuse cartridge nor holder		
Max. number of DC inputs	per Maximum Power Point 2 inputs connected in parallel		
Number of conduit inlets	2		
Number of string inputs per MPP	≤ 2		
Number of inputs	2		

Creation date July 3, 2025 10:33:51 PM CEST

PVN DC 2I 10 1MPP RD CG 11

Weidmüller Interface GmbH & Co. KG

Klingenbergstraße 26

D-32758 Detmold

Germany

www.weidmueller.com

Technical data

Outputs

DC Output + & -	Wire connection	Type of connection	PUSH IN
		Compatible cable crosssection	TÜV 2 Pfg 1169/08.07
		Wire cross-section, min.	2.5 mm²
		Wire cross-section, max.	16 mm²
Max. number of DC outputs	per Maximum Power Point 1 output		

Remote disconnecter

Automatic reclosing after voltage drop	Yes		
Number of operating cycles	10,000		
Control voltage	100 V AC - 250 V AC 50/60Hz		
Remote disconnecter auxiliary contact	Cable entry	Number of cable en-tries	1
	Wire connection	Type of connection	Screw terminal connec-tors
		Flexible, max. H05(07) V-K	1.5 mm ²
		w. wire end ferrule, DIN 46228 pt 1, max.	1.5 mm ²
Remote disconnecter control contact	Cable entry	Number of cable en-tries	1
	Wire connection	Type of connection	Screw terminal connec-tors
		Flexible, max. H05(07) V-K	1.5 mm ²
		w. wire end ferrule, DIN 46228 pt 1, max.	1.5 mm ²
Type of power circuit disconnection	Under voltage tripping		
Turn-off time	1.5 s		
Current consumption of switch	Type of switch	Fireman switch	
	Current consumption, note	The Peak current only arises for a short time when the capacitors of the fireman switch were previously completely discharged.	
	Current consumption peak	300 mA	
	Current consumption continuous	30 mA	
Number of breaking operation cycles at rated current	300		
Switch disconnecter execution	Remote disconnecter inside enclosure		
Switching disconnecter capacity	IEC 60947-3, DC-PV1		

Classifications

ETIM 6.0	EC002928	ETIM 7.0	EC002928
ETIM 8.0	EC003857	ETIM 9.0	EC003857
ETIM 10.0	EC003857	ECLASS 9.0	22-57-92-03
ECLASS 9.1	22-57-02-90	ECLASS 10.0	22-57-02-90
ECLASS 11.0	22-57-02-92	ECLASS 12.0	22-57-02-92
ECLASS 13.0	22-57-02-92	ECLASS 14.0	22-57-02-92
ECLASS 15.0	22-57-02-92		

PVN DC 2I 10 1MPP RD CG 11

Weidmüller Interface GmbH & Co. KG

Klingenbergstraße 26

D-32758 Detmold

Germany

www.weidmueller.com

Technical data

Tender specification sheets

Long specification

Automatic ON and OFF switching fireman switch for the connection to 1 MPP tracker in the inverter. Suitable for remote disconnection of the DC side by the fire department. Max. string voltage Uoc: 1100V

MPP1:
2 inputs, connection via M25 cable gland with 3x7mm Ø cable entry. PUSH IN connection / 2.5 - 6mm² single-wire, multi-wire, with/without ferrule.
1 output, connection via M25 cable gland with 3x7mm Ø cable entry. PUSH IN connection / 2.5 - 6mm² single-wire, multi-wire, with/without ferrule.

DC fireman switch: Switching off by undervoltage tripping. Automatic reconnection after the control voltage (230 V AC) is applied again. With signal contact.

Connection of the fireman switch control line 230 VAC via cable glands (8-12mmØ) max. conductor cross-section: 1.5mm². Connection of the signal contact 24 VDC via cable glands (8-12mmØ) max. conductor cross-section: 1.5mm². Protection class: IP65. All built into a glass fibre reinforced polyester housing. Dimensions HxWxD: 364x200x132mm.

Approval according to low voltage switchgear IEC 61439-1:2011 and EN 61439-2:2011

PVN DC 2I 10 1MPP RD CG 11

Weidmüller Interface GmbH & Co. KG

Klingenbergstraße 26

D-32758 Detmold

Germany

www.weidmueller.com

Technical data

Approvals

Approvals



Approvals MAMID

https://mdcop.weidmueller.com/mediadelivery/rendition/900_319222/-T1z1mm-S800/

ROHS

Conform

Environmental Product Compliance

RoHS Compliance Status

Compliant with exemption

RoHS Exemption (if applicable/known)

7a, 7cl

REACH SVHC

Lead 7439-92-1

SCIP

bdab5698-6a20-4370-8e28-8810d882d01a

Important note

Product information

Intended use of the UPS: This UPS has been especially developed as a safety device for direct current (DC) photovoltaic installations. The DC disconnect switch is used to disconnect the connected strings of the installation in case of an emergency situation. Such an emergency situation could be in case of fire.

Normal operation: The UPS will automatically switch to the off position, breaking the DC connection between the solar panels and the inverter, after the AC power to the UPS is interrupted for longer than five seconds. The UPS will automatically switch to the on position, restoring the DC connection between the solar panels and the inverter, once the AC power to the UPS is restored longer than five seconds.

Special Operation: If the temperature inside the UPS enclosure exceeds the 100°C, the UPS will automatically switch to OFF to protect the internal components and create a safe situation. When the installation is checked and the UPS is not affected, the UPS can be switched ON again by removal and re-applying the AC voltage to the UPS. The UPS will also automatically switch to OFF if there is an internal failure. If this occurs please try to reset the UPS by removal and re-applying the AC voltage to the UPS.

Emergency switch not included. The SCIP number was assigned due to a lead content of more than 0.1 % of the net weight.

Safe use instruction according to ECHA:

The identification of the hazardous substance is sufficient to allow safe use of the article throughout its life cycle, including the service life, disassembly and waste/recycling phase

Downloads

Approval/Certificate/Document of Conformity

[PV Next RD Declaration of Conformity](#)

Engineering Data

[CAD data – STEP](#)

Technical Documentation

[PVN1M1I2S1FXVX00TXPX11](#)[CAD data – Schematic diagram](#)

User Documentation

[MANUAL PV NEXT RD DE/EN](#)

White paper

[Fact Sheet DE PV CB Lastentrennschalter](#)[Fact Sheet EN PV CB Load break switch](#)[Fact Sheet DE PV Feuerwehrscharter](#)[Fact Sheet EN PV Fireman switch](#)

Catalogues

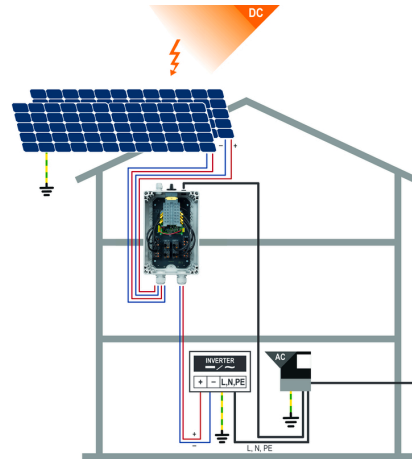
[Catalogues in PDF-format](#)

PVN DC 2I 10 1MPP RD CG 11

Weidmüller Interface GmbH & Co. KG
Klingenbergstraße 26
D-32758 Detmold
Germany

www.weidmueller.com

Drawings



PVN 1 M2 I6 S0 F3 V1 Q1 TX PX 10											
Series		Voltage		Power supply		Monitoring		Output Type		SPD	
PVN = PV Next		10 = 1kV		x = n/a		x = n/a		0 = GG		0 = TYP II	
VPD = PV Protect		11 = 1.1kV						1 = VVAC		1 = TYP I+II	
		15 = 1.5kV						2 = MCA-Exp 2		X = No SPD	
Level		Inputs		Switch		Fuses					
1 = DC trunk box (L1)		1...12 inputs		x = n/a		3 = only fuse holders					
Series				0 = manual switch							
1 = 1 MPP supported				1 = remote switch							
2 = 2 MPP supported											
3 = 3 MPP supported											
4 = 4 MPP supported											
6 = 6 MPP supported											

PVN DC 2I 10 1MPP RD CG 11

Weidmüller Interface GmbH & Co. KG

Klingenbergstraße 26

D-32758 Detmold

Germany

www.weidmueller.com

Accessories

Crosshead screwdriver Phillips



Crosshead screwdriver, Phillips, SDK PH DIN 5262, ISO 8764/2-PH, output to ISO 8764-PH, ChromTop tip, SoftFinish grip

General ordering data

Type	SDK PH3	Version
Order No.	9008500000	Screwdriver, Screwdriver
GTIN (EAN)	4032248056491	
Qty.	1 pc(s).	

Y-Connector Cables



The Y cable is used for the parallel connection of several strings in a PV system, e.g. for splitting a line in front of an inverter.

The cables are available in different connection variants.

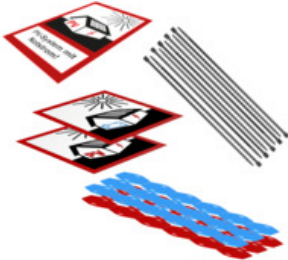
General ordering data

Type	PVHYM+M+XXXX6W-11	Version
Order No.	2877860000	Photovoltaics, Y-Connector Cable, 1x WM4 C Male, 2x MC4 Female,
GTIN (EAN)	4064675666424	6mm², 1100 V
Qty.	1 pc(s).	
Type	PVHYM-M-XXXX6W+11	Version
Order No.	2877850000	Photovoltaics, Y-Connector Cable, 1x WM4 C Female, 2x MC4 Male,
GTIN (EAN)	4064675666417	6mm², 1100 V
Qty.	1 pc(s).	

PVN DC 2I 10 1MPP RD CG 11

Weidmüller Interface GmbH & Co. KG
Klingenbergstraße 26
D-32758 Detmold
Germany

www.weidmueller.com

Accessories**PV marking sets****General ordering data**

Type	PV MARKER 1-3 MPP	Version		Packaging	
Order No.	8000149520	Photovoltaics, Device markers, Accessories, Conductor and cable		Plastic bag	
GTIN (EAN)	4099987229197	markers, Cable ties, Marking set, Warning label, Cable marker			
Qty.	1 pc(s).				

Emergency stop button**General ordering data**

Type	AC SB E 5A 1POL PO 06KV	Version	
Order No.	3077660000	Photovoltaics	
GTIN (EAN)	4099987081887		
Qty.	1 pc(s).		

PVN DC 2I 10 1MPP RD CG 11

Weidmüller Interface GmbH & Co. KG

Klingenbergstraße 26

D-32758 Detmold

Germany

www.weidmueller.com

Accessories

UV-resistant cable ties

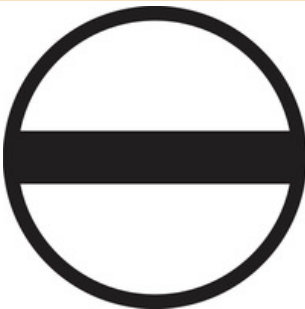


UV-resistant polyamide 6.6 ensures long durability of our special cable ties even with strong UV radiation. Ideal for continuous outdoor use.

General ordering data

Type	CB-UVR 290/4,5 BK	Version
Order No.	2659350000	Cable ties, 4,5 x 290 mm, Polyamide 66, 220 N
GTIN (EAN)	4050118682816	
Qty.	100 pc(s).	

Slotted screwdriver



Slotted screwdriver with rounded blade SD DIN 5265, ISO 2380/2, output to DIN 5264, ISO 2380/1. ChromTop tip, SoftFinish grip

General ordering data

Type	SDS 0.6X3.5X100	Version
Order No.	9008330000	Screwdriver, Screwdriver
GTIN (EAN)	4032248056286	
Qty.	1 pc(s).	
Type	SDS 1.0X5.5X150	Version
Order No.	9008350000	Screwdriver, Screwdriver
GTIN (EAN)	4032248056316	
Qty.	1 pc(s).	

PVN DC 2I 10 1MPP RD CG 11

Weidmüller Interface GmbH & Co. KG

Klingenbergstraße 26

D-32758 Detmold

Germany

www.weidmueller.com

Accessories

Sealing sets



General ordering data

Type	BLINDPLUG SET50 7X28MM	Version
Order No.	3077650000	Photovoltaics, Blind plug, Accessories, Blind plug, 50 pieces
GTIN (EAN)	4099987081870	
Qty.	1 pc(s).	
Type	BLINDPLUG SET5 7X28MM	Version
Order No.	3077670000	Photovoltaics, Blind plug
GTIN (EAN)	4099987081894	
Qty.	1 pc(s).	

Cutting tools



Cutting tools for conductors up to 8 mm, 12 mm, 14 mm and 22 mm outside diameter. The special blade geometry allows pinch-free cutting of copper and aluminium conductors with minimum physical effort. The cutting tools (KT 8 to KT 22) also come with VDE and GS-tested protective insulation up to 1,000 V in accordance with EN/IEC 60900.

General ordering data

Type	KT 14	Version
Order No.	1157820000	Cutting tools, Cutting tool for one-hand operation
GTIN (EAN)	4032248945344	
Qty.	1 pc(s).	

PVN DC 2I 10 1MPP RD CG 11**Weidmüller Interface GmbH & Co. KG**

Klingenbergstraße 26

D-32758 Detmold

Germany

www.weidmueller.com**Accessories****Tools**

- For flexible and solid conductors with special insulating materials
- High-quality stripping for industrial applications (complies with aircraft industry requirements)
- Specially shaped blades enable stripping of special types of insulation and conductor configurations
- Stripping length adjustable via end stop
- Very versatile thanks to interchangeable stripping units
- Stripping results reproduced accurately over and over again
- No damage to the conductor
- A long-lasting, reliable tool thanks to its sturdy design
- Integrated cutting function

General ordering data

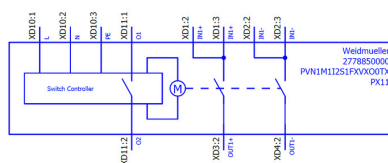
Type	MULTI-STRIPAX PV	Version
Order No.	1190490000	Photovoltaics, Plug-in connector
GTIN (EAN)	4032248973262	
Qty.	1 pc(s).	

PVN DC 2I 10 1MPP RD CG 11

Weidmüller Interface GmbH & Co. KG
Klingenbergstraße 26
D-32758 Detmold
Germany

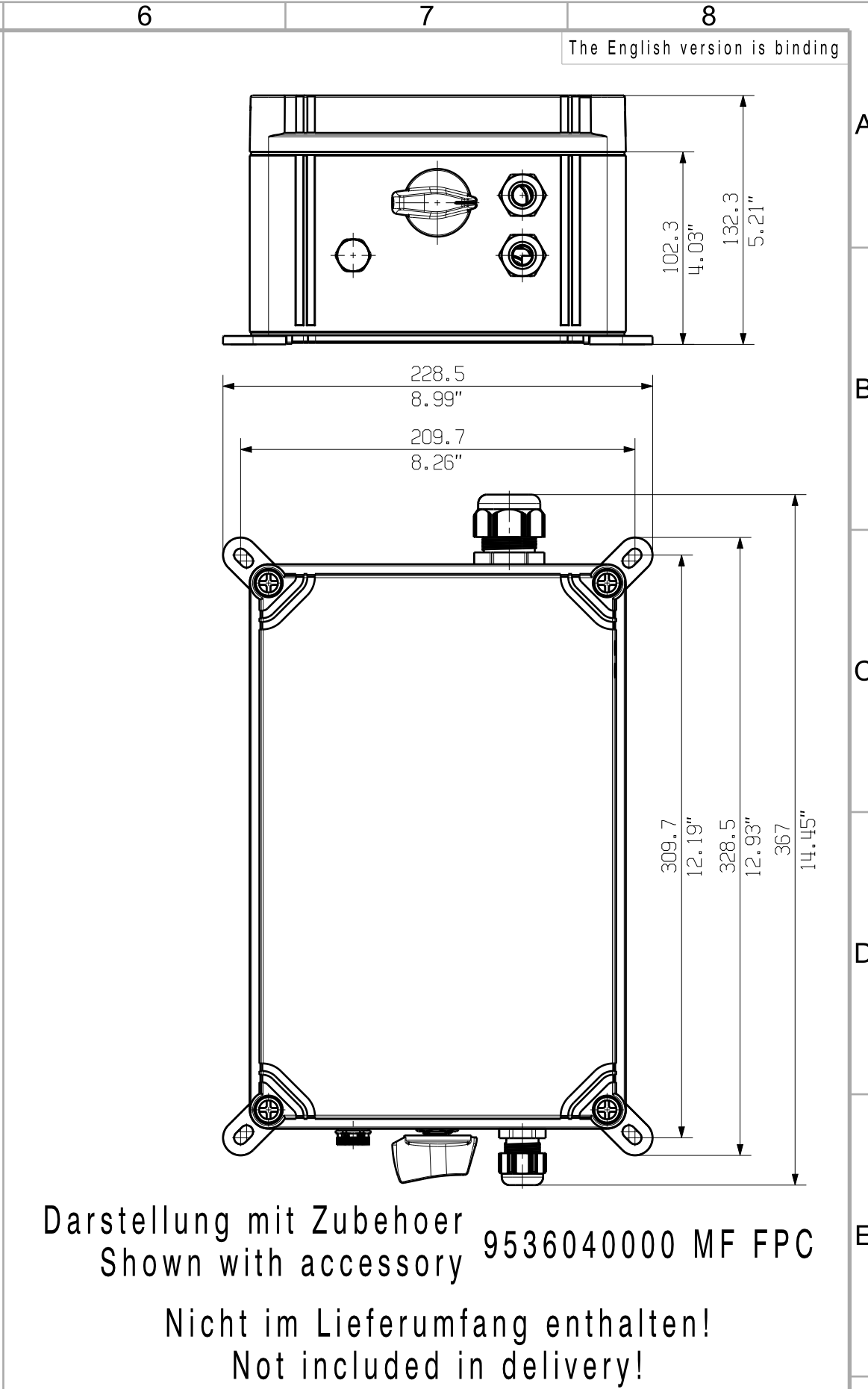
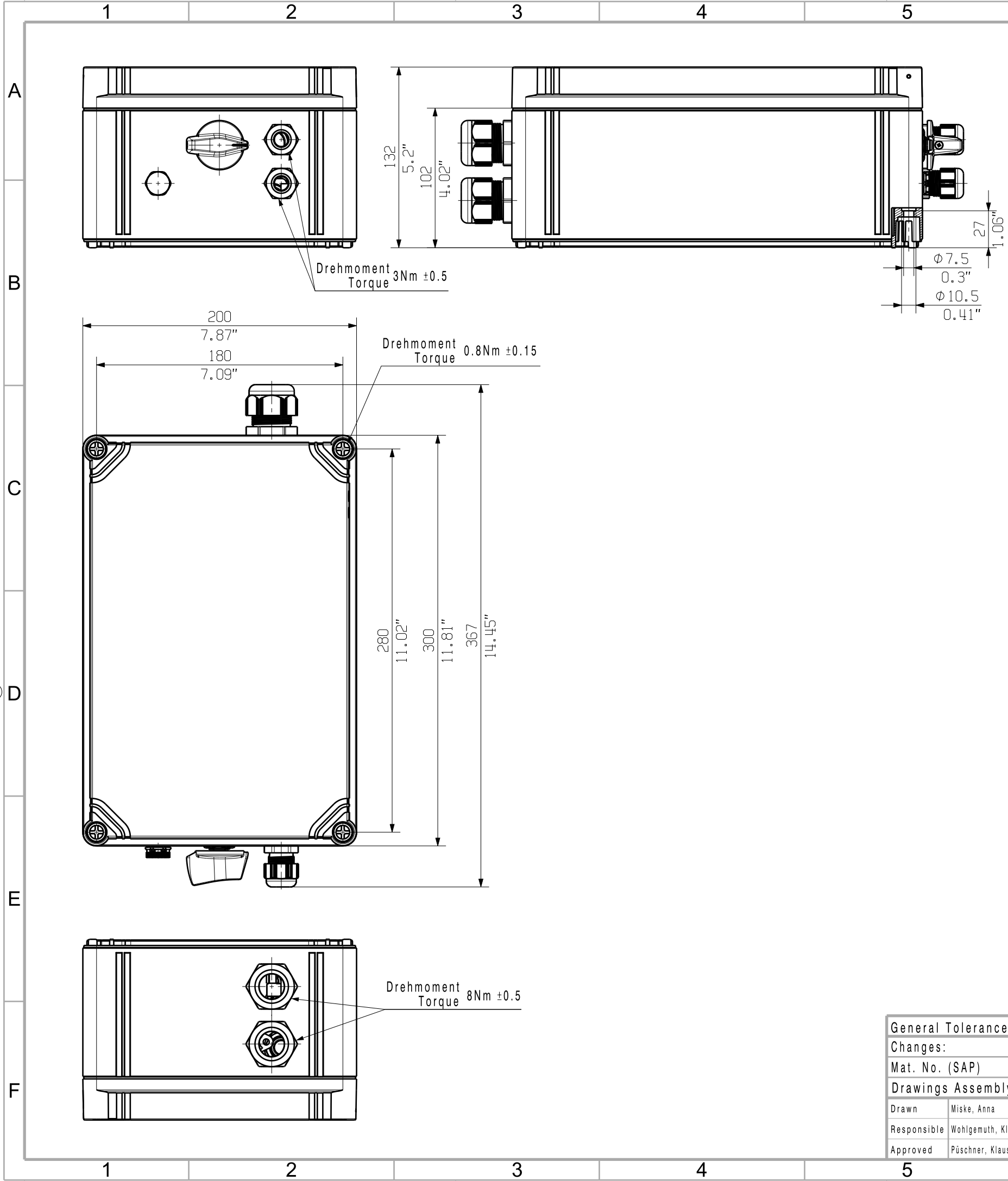
www.weidmueller.com


Drawings



The reproduction, distribution and utilization of this document as well as the communication of its contents to others without explicit authorization is prohibited. Offenders will be held liable for the payment of damages. Weidmüller exclusively reserves the right to file for patents, utility models or designs.

© Weidmüller Interface GmbH & Co. KG



General Tolerances: <input type="checkbox"/> WN700144-W.. <input type="checkbox"/> WN 212010 <input type="checkbox"/> ISO 2768-mK			Tolerances ISO 8015	
Changes:			<div>75771</div> <div>Drawing no. 0 Index</div>	
Mat. No. (SAP) 2778850000			<div>2778850000 PVN1M1I2S1FXVX00TXPX11</div> <div>COMBINERBOX RESIDENTIAL/COMMERCIAL</div> <div>COMBINERBOX RESIDENTIAL/COMMERCIAL</div>	
Drawings Assembly				
Drawn	Miske, Anna			
Responsible	Wohlgemuth, Klaus			
Approved	Püschner, Klaus		16.09.2021	