

**ATTB 6 PG CT****Weidmüller Interface GmbH & Co. KG**

Klingenbergstraße 26

D-32758 Detmold

Germany

[www.weidmueller.com](http://www.weidmueller.com)**General ordering data**

|            |  |
|------------|--|
| Version    | Test-disconnect terminal, PUSH IN, 6 mm <sup>2</sup> , 500 V, 30 A, dark beige |
| Order No.  | <a href="#">2762280000</a>   |
| Type       | ATTB 6 PG CT   |
| GTIN (EAN) | 4064675267676  |
| Qty.       | 50 pc(s).  |

## ATTB 6 PG CT

Weidmüller Interface GmbH &amp; Co. KG

Klingenbergstraße 26

D-32758 Detmold

Germany

www.weidmueller.com

## Technical data

## Dimensions and weights

|            |          |                 |            |
|------------|----------|-----------------|------------|
| Depth      | 68 mm    | Depth (inches)  | 2.677 inch |
| Height     | 109 mm   | Height (inches) | 4.291 inch |
| Width      | 8.1 mm   | Width (inches)  | 0.319 inch |
| Net weight | 30.657 g |                 |            |

## Temperatures

|                                  |                |                                  |        |
|----------------------------------|----------------|----------------------------------|--------|
| Storage temperature              | -25 °C...55 °C | Continuous operating temp., min. | -60 °C |
| Continuous operating temp., max. | 130 °C         |                                  |        |

## Material data

|                                |        |                           |            |
|--------------------------------|--------|---------------------------|------------|
| Material                       | Wemid  | Colour                    | dark beige |
| Colour of operational elements | orange | UL 94 flammability rating | V-0        |

## System specifications

|                               |     |                                     |       |
|-------------------------------|-----|-------------------------------------|-------|
| End cover plate required      | Yes | Number of potentials                | 1     |
| Number of levels              | 1   | Number of clamping points per level | 2     |
| Number of potentials per tier | 1   | Rail                                | TS 35 |

## Additional technical data

|            |       |                  |       |
|------------|-------|------------------|-------|
| Open sides | right | Type of mounting | TS 35 |
|------------|-------|------------------|-------|

## Conductors for clamping (rated connection)

|   |                     |   |                     |
|---|---------------------|---|---------------------|
| Blade size  | 0.8 x 4.0 mm        | Clamping range, max.  | 10 mm <sup>2</sup>  |
| Clamping range, min.  | 0.5 mm <sup>2</sup> | Connection cross-section, stranded, max.  | 6 mm <sup>2</sup>   |
| Connection cross-section, stranded, min.  | 0.5 mm <sup>2</sup> | Connection direction  | top                 |
| Gauge to IEC 60947-1  | A5                  | Number of connections   | 2                   |
| Stripping length  | 12 mm               | Type of connection  | PUSH IN             |
| Wire connection cross section AWG, max.   | AWG 8               | Wire connection cross section AWG, min.   | AWG 22              |
| Wire connection cross section, finely stranded, max.                                    | 10 mm <sup>2</sup>  | Wire connection cross section, finely stranded, min.                                    | 0.5 mm <sup>2</sup> |
| Wire connection cross-section, finely stranded with wire-end ferrules DIN 46228/1, max. | 10 mm <sup>2</sup>  | Wire connection cross-section, finely stranded with wire-end ferrules DIN 46228/1, min. | 0.5 mm <sup>2</sup> |
| Wire connection cross-section, finely stranded with wire-end ferrules DIN 46228/4, max. | 6 mm <sup>2</sup>   | Wire connection cross-section, finely stranded with wire-end ferrules DIN 46228/4, min. | 0.5 mm <sup>2</sup> |
| Wire connection cross-section, solid core, max.   | 6 mm <sup>2</sup>   | Wire connection cross-section, solid core, min.   | 0.5 mm <sup>2</sup> |

## General

|   |       |   |               |
|---|-------|---|---------------|
| Rail                                    | TS 35 | Standards                               | IEC 60947-7-1 |
| Wire connection cross section AWG, max. | AWG 8 | Wire connection cross section AWG, min. | AWG 22        |

## ATTB 6 PG CT

Weidmüller Interface GmbH &amp; Co. KG

Klingenbergstraße 26

D-32758 Detmold

Germany

www.weidmueller.com

## Technical data

## Rating data

|  |                   |                                 |               |
|--|-------------------|---------------------------------|---------------|
| Rated cross-section                          | 6 mm <sup>2</sup> | Rated voltage                   | 500 V         |
| Rated DC voltage                             | 500 V             | Rated current                   | 30 A          |
| Current at maximum wires                     | 30 A              | Standards                       | IEC 60947-7-1 |
| Volume resistance according to IEC 60947-7-x | 0.78 mΩ           | Rated impulse withstand voltage | 6 kV          |
| Power loss in accordance with IEC 60947-7-x  | 1.31 W            | Pollution severity              | 3             |
| Surge voltage category                       | III               |                                 |               |

## UL rating data

|  |        |  |       |
|--|--------|--|-------|
| Certificate No. (cURus)                    | E60693 | Conductor size Factory wiring max. (cURus) | 8 AWG |
| Conductor size Factory wiring min. (cURus) | 22 AWG | Conductor size Field wiring max. (cURus)   | 8 AWG |
| Conductor size Field wiring min. (cURus)   | 22 AWG | Current size D (cURus)                     | 10 A  |
| Voltage size D (cURus)                     | 300 V  |  |       |

## Classifications

|             |             |             |             |
|-------------|-------------|-------------|-------------|
| ETIM 6.0    | EC000902    | ETIM 7.0    | EC000902    |
| ETIM 8.0    | EC000902    | ETIM 9.0    | EC000902    |
| ECLASS 9.0  | 27-14-11-26 | ECLASS 9.1  | 27-14-11-26 |
| ECLASS 10.0 | 27-14-11-26 | ECLASS 11.0 | 27-14-11-26 |
| ECLASS 12.0 | 27-14-11-26 | ECLASS 13.0 | 27-25-01-09 |

## Approvals

Approvals



|                         |            |
|-------------------------|------------|
| ROHS                    | Conform    |
| UL File Number Search   | UL Website |
| Certificate No. (cURus) | E60693     |

## Downloads

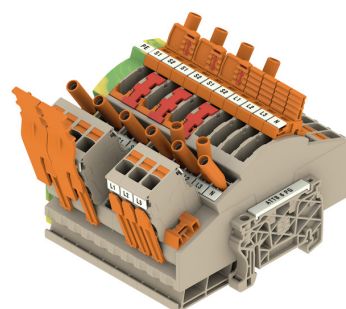
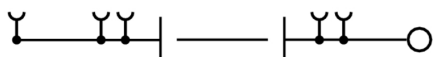
|   |   |
|---|---|
| Approval/Certificate/Document of Conformity | <a href="#">CB Testreport</a><br><a href="#">CB Certificate</a><br><a href="#">CE Declaration of Conformity</a> |
| Engineering Data                            | <a href="#">CAD data – STEP</a>   |
| Catalogues                                  | <a href="#">Catalogues in PDF-format</a>  |

## ATTB 6 PG CT

**Weidmüller Interface GmbH & Co. KG**  
Klingenbergstraße 26  
D-32758 Detmold  
Germany

[www.weidmueller.com](http://www.weidmueller.com)

## Drawings



## ATTB 6 PG CT

Weidmüller Interface GmbH &amp; Co. KG

Klingenbergstraße 26

D-32758 Detmold

Germany

www.weidmueller.com

## Accessories

## Shorting elements



The short circuit bridge can be simply and quickly inserted into the terminal blocks. If several levers are connected simultaneously with the lever connector, the make before break can be realised. Once mounted, the short circuit bridge cannot be removed from the application.

## General ordering data

|            |                            |  |
|------------|----------------------------|--|
| Type       | SCCB TTB 6/2               | Version  |
| Order No.  | <a href="#">2710190000</a> | Cross-connector (terminal), Plugged, Number of poles: 2, Pitch in mm |
| GTIN (EAN) | 4050118847987              | (P): 8.10, Insulated: Yes, 30 A, orange                              |
| Qty.       | 25 pc(s).                  |  |
| Type       | SCCB TTB 6/4               | Version  |
| Order No.  | <a href="#">2710210000</a> | Cross-connector (terminal), Plugged, Number of poles: 4, Pitch in mm |
| GTIN (EAN) | 4050118848007              | (P): 8.10, Insulated: Yes, 30 A, orange                              |
| Qty.       | 25 pc(s).                  |  |
| Type       | SCCB TTB 6/3               | Version  |
| Order No.  | <a href="#">2710200000</a> | Cross-connector (terminal), Plugged, Number of poles: 3, Pitch in mm |
| GTIN (EAN) | 4050118847994              | (P): 8.10, Insulated: Yes, 30 A, orange                              |
| Qty.       | 25 pc(s).                  |  |

## Locking elements



## General ordering data

|            |                            |   |
|------------|----------------------------|---|
| Type       | APGLE 6                    | Version                                   |
| Order No.  | <a href="#">2762400000</a> | Locking element (terminal), Wemid, orange |
| GTIN (EAN) | 4064675021407              |   |
| Qty.       | 20 pc(s).                  |   |

## ATTB 6 PG CT

Weidmüller Interface GmbH &amp; Co. KG

Klingenbergstraße 26

D-32758 Detmold

Germany

www.weidmueller.com

## Accessories

## Test sockets



The test socket is used to connect test devices with a standard 4.0 plug with widths up to 10 mm into the terminal. Test sockets are arranged at an angle, therefore all standard measurements (even adjoining) can be realised within the terminal width of 8.1 mm. Once mounted, the test socket cannot be removed from the application.

## General ordering data

|            |                            |  |
|------------|----------------------------|--|
| Type       | TS TTB 6 WT                | Version  |
| Order No.  | <a href="#">2817250000</a> | Socket (terminal), Depth: 51.3 mm                                  |
| GTIN (EAN) | 4064675322566              |  |
| Qty.       | 48 pc(s).                  |  |
| Type       | TS TTB 6 VT                | Version  |
| Order No.  | <a href="#">2710530000</a> | Socket (terminal), Plug-in depth: 11.5 mm, 0.00 mm, Depth: 51.3 mm |
| GTIN (EAN) | 4050118881097              |  |
| Qty.       | 48 pc(s).                  |  |
| Type       | TS TTB 6 BR                | Version  |
| Order No.  | <a href="#">2715540000</a> | Socket (terminal), Plug-in depth: 11.5 mm, 0.00 mm, Depth: 51.3 mm |
| GTIN (EAN) | 4050118769609              |  |
| Qty.       | 48 pc(s).                  |  |
| Type       | TS TTB 6 OR                | Version  |
| Order No.  | <a href="#">2710470000</a> | Socket (terminal), Depth: 51.3 mm                                  |
| GTIN (EAN) | 4050118880649              |  |
| Qty.       | 48 pc(s).                  |  |
| Type       | TS TTB 6 GN                | Version  |
| Order No.  | <a href="#">2710490000</a> | Socket (terminal), Depth: 51.3 mm                                  |
| GTIN (EAN) | 4050118880953              |  |
| Qty.       | 48 pc(s).                  |  |
| Type       | TS TTB 6 RD                | Version  |
| Order No.  | <a href="#">2710510000</a> | Socket (terminal), Depth: 51.3 mm                                  |
| GTIN (EAN) | 4050118881073              |  |
| Qty.       | 48 pc(s).                  |  |
| Type       | TS TTB 6 BK                | Version  |
| Order No.  | <a href="#">2710520000</a> | Socket (terminal), Depth: 51.3 mm                                  |
| GTIN (EAN) | 4050118881080              |  |
| Qty.       | 48 pc(s).                  |  |
| Type       | TS TTB 6 YL                | Version  |
| Order No.  | <a href="#">2710500000</a> | Socket (terminal), Depth: 51.3 mm                                  |
| GTIN (EAN) | 4050118881066              |  |
| Qty.       | 48 pc(s).                  |  |
| Type       | TS TTB 6 BL                | Version  |
| Order No.  | <a href="#">2710480000</a> | Socket (terminal), Depth: 51.3 mm                                  |
| GTIN (EAN) | 4050118880656              |  |
| Qty.       | 48 pc(s).                  |  |

**ATTB 6 PG CT****Weidmüller Interface GmbH & Co. KG**

Klingenbergstraße 26

D-32758 Detmold

Germany

[www.weidmueller.com](http://www.weidmueller.com)**Accessories****A-Series**

## A Series

Weidmüller's range of products includes end brackets that guarantee a permanent, reliable mounting on the terminal rail and prevent sliding. Versions with and without screws are available. The end brackets include marking options, also for group markers, and also a test plug holder.

**General ordering data**

|            |                            |                       |
|------------|----------------------------|-----------------------|
| Type       | AEB 35 SCL/1 V0            | Version               |
| Order No.  | <a href="#">2661280000</a> | A-series, End bracket |
| GTIN (EAN) | 4050118702163              |                       |
| Qty.       | 20 pc(s).                  |                       |
| Type       | AEB 35 SCL/1 V0 GY         | Version               |
| Order No.  | <a href="#">2661290000</a> | A-series, End bracket |
| GTIN (EAN) | 4050118702170              |                       |
| Qty.       | 20 pc(s).                  |                       |
| Type       | AEB 35 SCL/1 V0 BK         | Version               |
| Order No.  | <a href="#">2661300000</a> | A-series, End bracket |
| GTIN (EAN) | 4050118702187              |                       |
| Qty.       | 20 pc(s).                  |                       |

**Coding elements**

Through the use of coding pins, individual coding options ensure trouble-free plug-in connection.

**General ordering data**

|            |                            |   |
|------------|----------------------------|---|
| Type       | APGCE                      | Version   |
| Order No.  | <a href="#">1514490000</a> | Coding element (terminal), Wemid, orange, Width: 3.3 mm |
| GTIN (EAN) | 4050118321906              |   |
| Qty.       | 50 pc(s).                  |   |

**ATTB 6 PG CT****Weidmüller Interface GmbH & Co. KG**

Klingenbergstraße 26

D-32758 Detmold

Germany

[www.weidmueller.com](http://www.weidmueller.com)**Accessories****6 mm<sup>2</sup>****General ordering data**

|            |                            |   |
|------------|----------------------------|---|
| Type       | APG 6/2 MBB                | Version   |
| Order No.  | <a href="#">2762330000</a> | Plug, 6 mm <sup>2</sup> , 500 V, 30 A, Number of poles: 2, dark beige |
| GTIN (EAN) | 4064675021339              |   |
| Qty.       | 20 pc(s).                  |   |

|            |                            |   |
|------------|----------------------------|---|
| Type       | APG 6/3 MBB                | Version   |
| Order No.  | <a href="#">2762340000</a> | Plug, 6 mm <sup>2</sup> , 500 V, 30 A, Number of poles: 3, dark beige |
| GTIN (EAN) | 4064675021346              |   |
| Qty.       | 20 pc(s).                  |   |

**Strain reliefs****General ordering data**

|            |                            |   |
|------------|----------------------------|---|
| Type       | APGSR 6                    | Version                                 |
| Order No.  | <a href="#">2762390000</a> | Strain relief (terminal), Wemid, orange |
| GTIN (EAN) | 4064675021391              |   |
| Qty.       | 20 pc(s).                  |   |



## ATTB 6 PG CT

Weidmüller Interface GmbH &amp; Co. KG

Klingenbergstraße 26

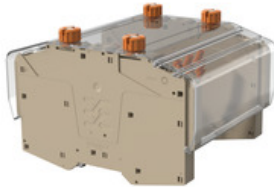
D-32758 Detmold

Germany

www.weidmueller.com

## Accessories

## Cover profiles



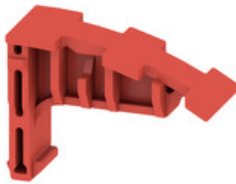
## Current and voltage transformer wiring

Our test disconnect terminal blocks featuring spring and screw connection technology allow you to create all the important converter circuits for measuring current, voltage and power in a safe and sophisticated way.

## General ordering data

|            |                            |                       |
|------------|----------------------------|-----------------------|
| Type       | CP TTB                     | Version               |
| Order No.  | <a href="#">2710140000</a> | Cover hood (terminal) |
| GTIN (EAN) | 4064675014171              |                       |
| Qty.       | 10 pc(s).                  |                       |
| Type       | CH TTB                     | Version               |
| Order No.  | <a href="#">2710130000</a> | Cover hood (terminal) |
| GTIN (EAN) | 4064675021155              |                       |
| Qty.       | 1 pc(s).                   |                       |
| Type       | CS TTB                     | Version               |
| Order No.  | <a href="#">2710150000</a> | A-series, End bracket |
| GTIN (EAN) | 4064675021148              |                       |
| Qty.       | 10 pc(s).                  |                       |

## Switch lock



The switch lock can be easily inserted into the terminal from above. The switch lock prevents unauthorised opening or closing of circuits as it blocks the disconnect lever in its respective position.

## General ordering data

|            |                            |   |
|------------|----------------------------|---|
| Type       | SL TTB 6                   | Version                                 |
| Order No.  | <a href="#">2710220000</a> | Lockout device (terminal), PA 66/6, red |
| GTIN (EAN) | 4050118893311              |   |
| Qty.       | 50 pc(s).                  |   |

## ATTB 6 PG CT

Weidmüller Interface GmbH &amp; Co. KG

Klingenbergstraße 26

D-32758 Detmold

Germany

www.weidmueller.com

## Accessories

## End plate



## Current and voltage transformer wiring

Our test disconnect terminal blocks featuring spring and screw connection technology allow you to create all the important converter circuits for measuring current, voltage and power in a safe and sophisticated way.

## General ordering data

|            |                            |                     |
|------------|----------------------------|---------------------|
| Type       | AEP TTB 6 PG               | Version             |
| Order No.  | <a href="#">2762310000</a> | A-series, End plate |
| GTIN (EAN) | 4064675075899              |                     |
| Qty.       | 20 pc(s).                  |                     |

6 mm<sup>2</sup>

The plug-in cross-connections feature easy handling and quick installation. This saves a great deal of time during installation in comparison with screwed solutions.

## General ordering data

|            |                            |  |
|------------|----------------------------|--|
| Type       | ZQV 6N/2 BL                | Version  |
| Order No.  | <a href="#">1985830000</a> | Cross-connector (terminal), Plugged, Number of poles: 2, Pitch in mm |
| GTIN (EAN) | 4050118370232              | (P): 8.00, Insulated: Yes, 41 A, blue                                |
| Qty.       | 60 pc(s).                  |  |
| Type       | ZQV 6N/2                   | Version  |
| Order No.  | <a href="#">1985740000</a> | Cross-connector (terminal), Plugged, Number of poles: 2, Pitch in mm |
| GTIN (EAN) | 4050118370362              | (P): 8.00, Insulated: Yes, 41 A, orange                              |
| Qty.       | 60 pc(s).                  |  |
| Type       | ZQV 6N/3                   | Version  |
| Order No.  | <a href="#">1985760000</a> | Cross-connector (terminal), Plugged, Number of poles: 3, Pitch in mm |
| GTIN (EAN) | 4050118370263              | (P): 8.00, Insulated: Yes, 41 A, orange                              |
| Qty.       | 60 pc(s).                  |  |
| Type       | ZQV 6N/7                   | Version  |
| Order No.  | <a href="#">2733960000</a> | Cross-connector (terminal), Plugged, Number of poles: 7, Pitch in mm |
| GTIN (EAN) | 4064675066804              | (P): 8.00, Insulated: Yes, 41 A, orange                              |
| Qty.       | 20 pc(s).                  |  |
| Type       | ZQV 6N/7 BL                | Version  |
| Order No.  | <a href="#">2786900000</a> | Cross-connector (terminal), Plugged, Number of poles: 7, Pitch in mm |
| GTIN (EAN) | 4064675064596              | (P): 8.00, Insulated: Yes, 41 A, blue                                |
| Qty.       | 20 pc(s).                  |  |

## ATTB 6 PG CT

Weidmüller Interface GmbH &amp; Co. KG

Klingenbergstraße 26

D-32758 Detmold

Germany

www.weidmueller.com

## Accessories

|            |                            |   |
|------------|----------------------------|---|
| Type       | ZQV 6N/10                  | Version   |
| Order No.  | <a href="#">2733970000</a> | Cross-connector (terminal), Plugged, Number of poles: 10, Pitch in mm |
| GTIN (EAN) | 4064675066811              | (P): 8.00, Insulated: Yes, 41 A, orange                               |
| Qty.       | 20 pc(s).                  |   |
| Type       | ZQV 6N/3 BL                | Version   |
| Order No.  | <a href="#">1985840000</a> | Cross-connector (terminal), Plugged, Number of poles: 3, Pitch in mm  |
| GTIN (EAN) | 4050118370379              | (P): 8.00, Insulated: Yes, 41 A, blue                                 |
| Qty.       | 60 pc(s).                  |   |
| Type       | ZQV 6N/4                   | Version   |
| Order No.  | <a href="#">1985780000</a> | Cross-connector (terminal), Plugged, Number of poles: 4, Pitch in mm  |
| GTIN (EAN) | 4050118370287              | (P): 8.00, Insulated: Yes, 41 A, orange                               |
| Qty.       | 60 pc(s).                  |   |
| Type       | ZQV 6N/10 BL               | Version   |
| Order No.  | <a href="#">2786910000</a> | Cross-connector (terminal), Plugged, Number of poles: 10, Pitch in mm |
| GTIN (EAN) | 4064675064602              | (P): 8.00, Insulated: Yes, 41 A, blue                                 |
| Qty.       | 20 pc(s).                  |   |
| Type       | ZQV 6N/6 BL                | Version   |
| Order No.  | <a href="#">2786890000</a> | Cross-connector (terminal), Plugged, Number of poles: 6, Pitch in mm  |
| GTIN (EAN) | 4064675064572              | (P): 8.00, Insulated: Yes, 41 A, blue                                 |
| Qty.       | 20 pc(s).                  |   |
| Type       | ZQV 6N/6                   | Version   |
| Order No.  | <a href="#">2733950000</a> | Cross-connector (terminal), Plugged, Number of poles: 6, Pitch in mm  |
| GTIN (EAN) | 4064675066699              | (P): 8.00, Insulated: Yes, 41 A, orange                               |
| Qty.       | 20 pc(s).                  |   |
| Type       | ZQV 6N/4 BL                | Version   |
| Order No.  | <a href="#">1985850000</a> | Cross-connector (terminal), Plugged, Number of poles: 4, Pitch in mm  |
| GTIN (EAN) | 4050118370447              | (P): 8.00, Insulated: Yes, 41 A, blue                                 |
| Qty.       | 60 pc(s).                  |   |

## ATTB 6 PG CT

Weidmüller Interface GmbH &amp; Co. KG

Klingenbergstraße 26

D-32758 Detmold

Germany

www.weidmueller.com

## Accessories

## DEK 5/8



## WS/ DEK

MultiMark terminal markers use an innovative composite material made from two components. The hard base contour of the marker snaps securely into the connector. The elastic surface finish makes the marker easy to mount. This specially punched material enables the strips to be stretched to accommodate the slight variations in spacing that tend to add up, especially with long terminal blocks. Another advantage: the excellent printability of the surface material guarantees durable and wear-resistant labelling. A print resolution of 300 dpi also produces a very legible script.

## Your benefits with MultiMark

- Firm hold and durable printing
- Continuous strips save installation time
- Easy mounting thanks to an innovative composite material
- Large label field for optimal legibility
- High flexibility thanks to manufacturer independence

## General ordering data

|            |                            |  |
|------------|----------------------------|--|
| Type       | DEK-A 5/8 MM WS            | Version  |
| Order No.  | <a href="#">2448860000</a> | Dekafix, Terminal marker, 5 x 8.1 mm, Weidmueller, white |
| GTIN (EAN) | 4050118462968              |  |
| Qty.       | 500 pc(s).                 |  |

## Protective covers



## General ordering data

|            |                            |                       |
|------------|----------------------------|-----------------------|
| Type       | APGPC 6                    | Version               |
| Order No.  | <a href="#">2762410000</a> | Cover hood (terminal) |
| GTIN (EAN) | 4064675021414              |                       |
| Qty.       | 20 pc(s).                  |                       |

## ATTB 6 PG CT

Weidmüller Interface GmbH &amp; Co. KG

Klingenbergstraße 26

D-32758 Detmold

Germany

www.weidmueller.com

## Accessories

## Lever Link



## Current and voltage transformer wiring

Our test disconnect terminal blocks featuring spring and screw connection technology allow you to create all the important converter circuits for measuring current, voltage and power in a safe and sophisticated way.

## General ordering data

|            |                            |                          |
|------------|----------------------------|--------------------------|
| Type       | LL TTB 6/2 BL              | Version                  |
| Order No.  | <a href="#">2710310000</a> | Locking lever (terminal) |
| GTIN (EAN) | 4050118848250              |                          |
| Qty.       | 50 pc(s).                  |                          |
| Type       | LL TTB 6/2 CM RD           | Version                  |
| Order No.  | <a href="#">2710410000</a> | Locking lever (terminal) |
| GTIN (EAN) | 4064675012634              |                          |
| Qty.       | 50 pc(s).                  |                          |
| Type       | LL TTB 6/1 BL              | Version                  |
| Order No.  | <a href="#">2710240000</a> | Locking lever (terminal) |
| GTIN (EAN) | 4050118847918              |                          |
| Qty.       | 50 pc(s).                  |                          |
| Type       | LL TTB 6/2 CM BL           | Version                  |
| Order No.  | <a href="#">2710380000</a> | Locking lever (terminal) |
| GTIN (EAN) | 4064675012603              |                          |
| Qty.       | 50 pc(s).                  |                          |
| Type       | LL TTB 6/3                 | Version                  |
| Order No.  | <a href="#">2710440000</a> | Locking lever (terminal) |
| GTIN (EAN) | 4050118848236              |                          |
| Qty.       | 50 pc(s).                  |                          |
| Type       | LL TTB 6/1 WT              | Version                  |
| Order No.  | <a href="#">2817220000</a> | Locking lever (terminal) |
| GTIN (EAN) | 4064675322535              |                          |
| Qty.       | 50 pc(s).                  |                          |
| Type       | LL TTB 6/2 CM              | Version                  |
| Order No.  | <a href="#">2710370000</a> | Locking lever (terminal) |
| GTIN (EAN) | 4064675012092              |                          |
| Qty.       | 50 pc(s).                  |                          |
| Type       | LL TTB 6/6                 | Version                  |
| Order No.  | <a href="#">2710460000</a> | Locking lever (terminal) |
| GTIN (EAN) | 4050118848212              |                          |
| Qty.       | 10 pc(s).                  |                          |
| Type       | LL TTB 6/2 GN              | Version                  |
| Order No.  | <a href="#">2710320000</a> | Locking lever (terminal) |
| GTIN (EAN) | 4050118848328              |                          |
| Qty.       | 50 pc(s).                  |                          |
| Type       | LL TTB 6/2 WT              | Version                  |
| Order No.  | <a href="#">2817230000</a> | Locking lever (terminal) |
| GTIN (EAN) | 4064675322542              |                          |
| Qty.       | 50 pc(s).                  |                          |

Creation date May 12, 2024 12:09:18 PM CEST

## ATTB 6 PG CT

Weidmüller Interface GmbH &amp; Co. KG

Klingenbergstraße 26

D-32758 Detmold

Germany

www.weidmueller.com

## Accessories

|            |                            |                          |
|------------|----------------------------|--------------------------|
| Type       | LL TTB 6/2 CM VT           | Version                  |
| Order No.  | <a href="#">2710430000</a> | Locking lever (terminal) |
| GTIN (EAN) | 4064675012658              |                          |
| Qty.       | 50 pc(s).                  |                          |
| Type       | LL TTB 6/1 BR              | Version                  |
| Order No.  | <a href="#">2762590000</a> | Locking lever (terminal) |
| GTIN (EAN) | 4064675018377              |                          |
| Qty.       | 50 pc(s).                  |                          |
| Type       | LL TTB 6/1 VT              | Version                  |
| Order No.  | <a href="#">2710290000</a> | Locking lever (terminal) |
| GTIN (EAN) | 4050118847970              |                          |
| Qty.       | 50 pc(s).                  |                          |
| Type       | LL TTB 6/1 RD              | Version                  |
| Order No.  | <a href="#">2710270000</a> | Locking lever (terminal) |
| GTIN (EAN) | 4050118847956              |                          |
| Qty.       | 50 pc(s).                  |                          |
| Type       | LL TTB 6/2 BR              | Version                  |
| Order No.  | <a href="#">2762600000</a> | Locking lever (terminal) |
| GTIN (EAN) | 4064675018384              |                          |
| Qty.       | 50 pc(s).                  |                          |
| Type       | LL TTB 6/2 CM BK           | Version                  |
| Order No.  | <a href="#">2710420000</a> | Locking lever (terminal) |
| GTIN (EAN) | 4064675012641              |                          |
| Qty.       | 50 pc(s).                  |                          |
| Type       | LL TTB 6/2 VT              | Version                  |
| Order No.  | <a href="#">2710360000</a> | Locking lever (terminal) |
| GTIN (EAN) | 4050118848267              |                          |
| Qty.       | 50 pc(s).                  |                          |
| Type       | LL TTB 6/4                 | Version                  |
| Order No.  | <a href="#">2710450000</a> | Locking lever (terminal) |
| GTIN (EAN) | 4050118848229              |                          |
| Qty.       | 25 pc(s).                  |                          |
| Type       | LL TTB 6/2 CM BR           | Version                  |
| Order No.  | <a href="#">2762610000</a> | Locking lever (terminal) |
| GTIN (EAN) | 4064675018391              |                          |
| Qty.       | 50 pc(s).                  |                          |
| Type       | LL TTB 6/2 CM GN           | Version                  |
| Order No.  | <a href="#">2710390000</a> | Locking lever (terminal) |
| GTIN (EAN) | 4064675012610              |                          |
| Qty.       | 50 pc(s).                  |                          |
| Type       | LL TTB 6/3 CM              | Version                  |
| Order No.  | <a href="#">2726100000</a> | Locking lever (terminal) |
| GTIN (EAN) | 4064675012665              |                          |
| Qty.       | 50 pc(s).                  |                          |
| Type       | LL TTB 6/1                 | Version                  |
| Order No.  | <a href="#">2710230000</a> | Locking lever (terminal) |
| GTIN (EAN) | 4050118847925              |                          |
| Qty.       | 50 pc(s).                  |                          |
| Type       | LL TTB 6/2 CM WT           | Version                  |
| Order No.  | <a href="#">2817240000</a> | Locking lever (terminal) |
| GTIN (EAN) | 4064675322559              |                          |
| Qty.       | 50 pc(s).                  |                          |

Creation date May 12, 2024 12:09:18 PM CEST

Catalogue status 04.05.2024 / We reserve the right to make technical changes.

## ATTB 6 PG CT

Weidmüller Interface GmbH &amp; Co. KG

Klingenbergstraße 26

D-32758 Detmold

Germany

www.weidmueller.com

## Accessories

|            |                            |                          |
|------------|----------------------------|--------------------------|
| Type       | LL TTB 6/1 BK              | Version                  |
| Order No.  | <a href="#">2710280000</a> | Locking lever (terminal) |
| GTIN (EAN) | 4050118847963              |                          |
| Qty.       | 50 pc(s).                  |                          |
| Type       | LL TTB 6/2 BK              | Version                  |
| Order No.  | <a href="#">2710350000</a> | Locking lever (terminal) |
| GTIN (EAN) | 4050118848274              |                          |
| Qty.       | 50 pc(s).                  |                          |
| Type       | LL TTB 6/2 YL              | Version                  |
| Order No.  | <a href="#">2710330000</a> | Locking lever (terminal) |
| GTIN (EAN) | 4050118848311              |                          |
| Qty.       | 50 pc(s).                  |                          |
| Type       | LL TTB 6/4 CM              | Version                  |
| Order No.  | <a href="#">2726110000</a> | Locking lever (terminal) |
| GTIN (EAN) | 4064675012672              |                          |
| Qty.       | 50 pc(s).                  |                          |
| Type       | LL TTB 6/2 RD              | Version                  |
| Order No.  | <a href="#">2710340000</a> | Locking lever (terminal) |
| GTIN (EAN) | 4050118848281              |                          |
| Qty.       | 50 pc(s).                  |                          |
| Type       | LL TTB 6/1 YL              | Version                  |
| Order No.  | <a href="#">2710260000</a> | Locking lever (terminal) |
| GTIN (EAN) | 4050118893335              |                          |
| Qty.       | 50 pc(s).                  |                          |
| Type       | LL TTB 6/2 CM YL           | Version                  |
| Order No.  | <a href="#">2710400000</a> | Locking lever (terminal) |
| GTIN (EAN) | 4064675012627              |                          |
| Qty.       | 50 pc(s).                  |                          |
| Type       | LL TTB 6/2                 | Version                  |
| Order No.  | <a href="#">2710300000</a> | Locking lever (terminal) |
| GTIN (EAN) | 4050118848243              |                          |
| Qty.       | 50 pc(s).                  |                          |
| Type       | LL TTB 6/1 GN              | Version                  |
| Order No.  | <a href="#">2710250000</a> | Locking lever (terminal) |
| GTIN (EAN) | 4050118847949              |                          |
| Qty.       | 50 pc(s).                  |                          |

**ATTB 6 PG CT****Weidmüller Interface GmbH & Co. KG**

Klingenbergstraße 26

D-32758 Detmold

Germany

[www.weidmueller.com](http://www.weidmueller.com)**Accessories****Blank**

The Dekafix (DEK) marker is the universal marker for all conductor and plug-in connectors as well as for electronic sub-assemblies. The system is ideal for short number sequences and covers a wide range of ready-printed markers.

Strips for fast installation in only one work step. The printing is easy to read, rich in contrast and available in various widths.

- Large range of ready-to-use markers
- Strips for fast installation
- Terminal markers, suitable for all Weidmüller cable connectors
- Available as blank MultiCard or with standard printing

**For custom printing:** Please send us a file of our labeling software M-Print PRO or M-Print PRO Online (without installation) for your labeling specifications.

**General ordering data**

|            |                            |   |
|------------|----------------------------|---|
| Type       | DEK 5/8-11.5 MC NE WS      | Version   |
| Order No.  | <a href="#">1341630000</a> | Dekafix, Terminal marker, 5 x 8 mm, Pitch in mm (P): 8.00 |
| GTIN (EAN) | 4050118145946              | Weidmueller, white  |
| Qty.       | 500 pc(s).                 |   |