

**HDC MHD 12 MP****Weidmüller Interface GmbH & Co. KG**

Klingenbergstraße 26

D-32758 Detmold

Germany

[www.weidmueller.com](http://www.weidmueller.com)**Flexible**

The four module sizes make for individual plug solutions that save a huge amount of space. The smaller pitch translates into an optimised design too.

**General ordering data**

| Version    | Signal module              |
|------------|----------------------------|
| Order No.  | <a href="#">2748460000</a> |
| Type       | HDC MHD 12 MP              |
| GTIN (EAN) | 4050118890938              |
| Qty.       | 1 pc(s).                   |

## HDC MHD 12 MP

Weidmüller Interface GmbH &amp; Co. KG

Klingenbergstraße 26

D-32758 Detmold

Germany

www.weidmueller.com

## Technical data

## Dimensions and weights

|            |         |                 |            |
|------------|---------|-----------------|------------|
| Depth      | 34 mm   | Depth (inches)  | 1.339 inch |
| Height     | 36.3 mm | Height (inches) | 1.429 inch |
| Width      | 34.1 mm | Width (inches)  | 1.343 inch |
| Net weight | 21 g    |                 |            |

## Temperatures

|                   |                   |
|-------------------|-------------------|
| Limit temperature | -40 °C ... 125 °C |
|-------------------|-------------------|

## General data

|                              |               |                                      |          |
|------------------------------|---------------|--------------------------------------|----------|
| Material                     | Polycarbonate | Number of poles                      | 12       |
| Plugging cycles              | ≥ 500         | Pollution severity                   | 3        |
| Rated current (DIN EN 61984) | 10 A          | Rated impulse voltage (DIN EN 61984) | 4 kV     |
| Rated voltage (DIN EN 61984) | 250 V         | Rated voltage according to UL/CSA    | 600 V    |
| Required plug-in slots       | 1             | Series                               | ModuPlug |
| Surge voltage category       | III           | Type                                 | Male     |
| UL 94 flammability rating    | V-0           |                                      |          |

## PE connection data

|                    |                                   |
|--------------------|-----------------------------------|
| Connection type PE | Screw connection via module frame |
|--------------------|-----------------------------------|

## Version

|   |                     |   |                       |
|---|---------------------|---|-----------------------|
| Conductor cross-section, max.           | 1.5 mm <sup>2</sup> | Conductor cross-section, min.           | 0.14 mm <sup>2</sup>  |
| Stripping length, rated connection      | 8 mm                | Type of connection                      | PUSH IN with actuator |
| Wire connection cross section AWG, max. | AWG 16              | Wire connection cross section AWG, min. | AWG 26                |

## Classifications

|             |             |             |             |
|-------------|-------------|-------------|-------------|
| ETIM 6.0    | EC002312    | ETIM 7.0    | EC002312    |
| ETIM 8.0    | EC002312    | ETIM 9.0    | EC002312    |
| ECLASS 9.0  | 27-44-02-92 | ECLASS 9.1  | 27-44-02-18 |
| ECLASS 10.0 | 27-44-02-92 | ECLASS 11.0 | 27-44-02-92 |
| ECLASS 12.0 | 27-44-02-92 | ECLASS 13.0 | 27-44-02-92 |

## Approvals

Approvals



|                       |            |
|-----------------------|------------|
| ROHS                  | Conform    |
| UL File Number Search | UL Website |
| Certificate No. (UR)  | E92202     |

## Downloads

|   |  |
|---|--|
| Approval/Certificate/Document of Conformity | <a href="#">Manufacturer's declaration</a> |
| Engineering Data                            | <a href="#">CAD data – STEP</a>            |
| Catalogues                                  | <a href="#">Catalogues in PDF-format</a>   |

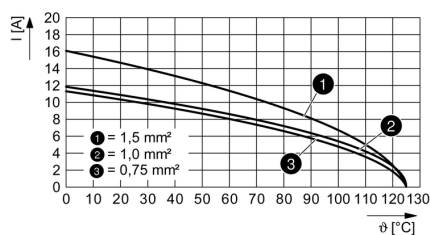
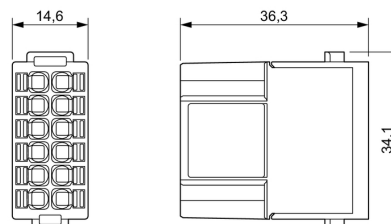
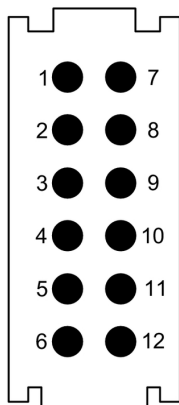
Creation date May 3, 2024 10:17:44 AM CEST

## HDC MHD 12 MP

**Weidmüller Interface GmbH & Co. KG**  
Klingenbergstraße 26  
D-32758 Detmold  
Germany

[www.weidmueller.com](http://www.weidmueller.com)

## Drawings



**HDC MHD 12 MP****Weidmüller Interface GmbH & Co. KG**

Klingenbergstraße 26

D-32758 Detmold

Germany

[www.weidmueller.com](http://www.weidmueller.com)**Accessories****With short guiding pin****General ordering data**

|            |                            |         |
|------------|----------------------------|---------|
| Type       | HDC MFGS 16B DA            | Version |
| Order No.  | <a href="#">2736940000</a> | Frame   |
| GTIN (EAN) | 4050118823004              |         |
| Qty.       | 1 pc(s).                   |         |
| Type       | HDC MFGS 16B AD            | Version |
| Order No.  | <a href="#">2736930000</a> | Frame   |
| GTIN (EAN) | 4050118822298              |         |
| Qty.       | 1 pc(s).                   |         |

**Standard****General ordering data**

|            |                            |         |
|------------|----------------------------|---------|
| Type       | HDC MF 6B BA               | Version |
| Order No.  | <a href="#">1428940000</a> | Frame   |
| GTIN (EAN) | 4050118233353              |         |
| Qty.       | 1 pc(s).                   |         |
| Type       | HDC MF 6B AB               | Version |
| Order No.  | <a href="#">1428920000</a> | Frame   |
| GTIN (EAN) | 4050118233414              |         |
| Qty.       | 1 pc(s).                   |         |

**HDC MHD 12 MP****Weidmüller Interface GmbH & Co. KG**

Klingenbergstraße 26

D-32758 Detmold

Germany

[www.weidmueller.com](http://www.weidmueller.com)**Accessories****Standard****General ordering data**

|            |                            |         |
|------------|----------------------------|---------|
| Type       | HDC MF 16B AD              | Version |
| Order No.  | <a href="#">1429010000</a> | Frame   |
| GTIN (EAN) | 4050118233315              |         |
| Qty.       | 1 pc(s).                   |         |
| Type       | HDC MF 16B DA              | Version |
| Order No.  | <a href="#">1429030000</a> | Frame   |
| GTIN (EAN) | 4050118233407              |         |
| Qty.       | 1 pc(s).                   |         |

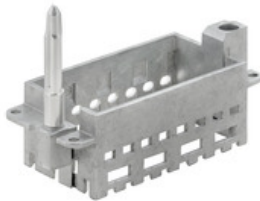
**With short guiding pin****General ordering data**

|            |                            |         |
|------------|----------------------------|---------|
| Type       | HDC MFGS 6B AB             | Version |
| Order No.  | <a href="#">2736890000</a> | Frame   |
| GTIN (EAN) | 4050118822250              |         |
| Qty.       | 1 pc(s).                   |         |
| Type       | HDC MFGS 6B BA             | Version |
| Order No.  | <a href="#">2736900000</a> | Frame   |
| GTIN (EAN) | 4050118822267              |         |
| Qty.       | 1 pc(s).                   |         |

**HDC MHD 12 MP**

**Weidmüller Interface GmbH & Co. KG**  
Klingenbergstraße 26  
D-32758 Detmold  
Germany

[www.weidmueller.com](http://www.weidmueller.com)

**Accessories****With long guiding pin****General ordering data**

|            |                            |         |
|------------|----------------------------|---------|
| Type       | HDC MFGL 16B AD            | Version |
| Order No.  | <a href="#">2737010000</a> | Frame   |
| GTIN (EAN) | 4050118823066              |         |
| Qty.       | 1 pc(s).                   |         |
| Type       | HDC MFGL 16B DA            | Version |
| Order No.  | <a href="#">2737020000</a> | Frame   |
| GTIN (EAN) | 4050118823073              |         |
| Qty.       | 1 pc(s).                   |         |

**With short guiding pin****General ordering data**

|            |                            |         |
|------------|----------------------------|---------|
| Type       | HDC MFGS 24B AF            | Version |
| Order No.  | <a href="#">2736950000</a> | Frame   |
| GTIN (EAN) | 4050118823011              |         |
| Qty.       | 1 pc(s).                   |         |
| Type       | HDC MFGS 24B FA            | Version |
| Order No.  | <a href="#">2736960000</a> | Frame   |
| GTIN (EAN) | 4050118823028              |         |
| Qty.       | 1 pc(s).                   |         |

**HDC MHD 12 MP****Weidmüller Interface GmbH & Co. KG**

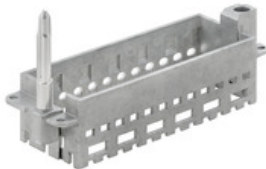
Klingenbergstraße 26

D-32758 Detmold

Germany

[www.weidmueller.com](http://www.weidmueller.com)**Accessories****With long guiding pin****General ordering data**

|            |                            |         |
|------------|----------------------------|---------|
| Type       | HDC MFGL 10B CA            | Version |
| Order No.  | <a href="#">2737000000</a> | Frame   |
| GTIN (EAN) | 4050118823059              |         |
| Qty.       | 1 pc(s).                   |         |
| Type       | HDC MFGL 10B AC            | Version |
| Order No.  | <a href="#">2736990000</a> | Frame   |
| GTIN (EAN) | 4050118823042              |         |
| Qty.       | 1 pc(s).                   |         |

**With long guiding pin****General ordering data**

|            |                            |         |
|------------|----------------------------|---------|
| Type       | HDC MFGL 24B FA            | Version |
| Order No.  | <a href="#">2737040000</a> | Frame   |
| GTIN (EAN) | 4050118823097              |         |
| Qty.       | 1 pc(s).                   |         |
| Type       | HDC MFGL 24B AF            | Version |
| Order No.  | <a href="#">2737030000</a> | Frame   |
| GTIN (EAN) | 4050118823080              |         |
| Qty.       | 1 pc(s).                   |         |

**HDC MHD 12 MP****Weidmüller Interface GmbH & Co. KG**

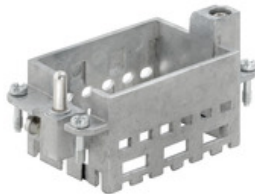
Klingenbergstraße 26

D-32758 Detmold

Germany

[www.weidmueller.com](http://www.weidmueller.com)**Accessories****With long guiding pin****General ordering data**

|            |                            |         |
|------------|----------------------------|---------|
| Type       | HDC MFGL 6B AB             | Version |
| Order No.  | <a href="#">2736970000</a> | Frame   |
| GTIN (EAN) | 4050118823035              |         |
| Qty.       | 1 pc(s).                   |         |
| Type       | HDC MFGL 6B BA             | Version |
| Order No.  | <a href="#">2736980000</a> | Frame   |
| GTIN (EAN) | 4050118822908              |         |
| Qty.       | 1 pc(s).                   |         |

**Standard****General ordering data**

|            |                            |         |
|------------|----------------------------|---------|
| Type       | HDC MF 10B AC              | Version |
| Order No.  | <a href="#">1428960000</a> | Frame   |
| GTIN (EAN) | 4050118233223              |         |
| Qty.       | 1 pc(s).                   |         |
| Type       | HDC MF 10B CA              | Version |
| Order No.  | <a href="#">1428980000</a> | Frame   |
| GTIN (EAN) | 4050118233278              |         |
| Qty.       | 1 pc(s).                   |         |



**HDC MHD 12 MP****Weidmüller Interface GmbH & Co. KG**

Klingenbergstraße 26

D-32758 Detmold

Germany

[www.weidmueller.com](http://www.weidmueller.com)**Accessories****Standard****General ordering data**

|            |                            |         |
|------------|----------------------------|---------|
| Type       | HDC MF 24B FA              | Version |
| Order No.  | <a href="#">1429070000</a> | Frame   |
| GTIN (EAN) | 4050118233520              |         |
| Qty.       | 1 pc(s).                   |         |
| Type       | HDC MF 24B AF              | Version |
| Order No.  | <a href="#">1429050000</a> | Frame   |
| GTIN (EAN) | 4050118233285              |         |
| Qty.       | 1 pc(s).                   |         |

**With short guiding pin****General ordering data**

|            |                            |         |
|------------|----------------------------|---------|
| Type       | HDC MFGS 10B AC            | Version |
| Order No.  | <a href="#">2736910000</a> | Frame   |
| GTIN (EAN) | 4050118822274              |         |
| Qty.       | 1 pc(s).                   |         |
| Type       | HDC MFGS 10B CA            | Version |
| Order No.  | <a href="#">2736920000</a> | Frame   |
| GTIN (EAN) | 4050118822281              |         |
| Qty.       | 1 pc(s).                   |         |