

HDC MHX 2 MC**Weidmüller Interface GmbH & Co. KG**

Klingenbergstraße 26

D-32758 Detmold

Germany

www.weidmueller.com**Flexible**

The four module sizes make for individual plug solutions that save a huge amount of space. The smaller pitch translates into an optimised design too.

General ordering data

Version	Power module
Order No.	2748340000
Type	HDC MHX 2 MC
GTIN (EAN)	4050118890990
Qty.	5 pc(s).

HDC MHX 2 MC

Weidmüller Interface GmbH & Co. KG

Klingenbergstraße 26

D-32758 Detmold

Germany

www.weidmueller.com

Technical data

Dimensions and weights

Depth	34 mm	Depth (inches)	1.339 inch
Height	43.7 mm	Height (inches)	1.72 inch
Width	34.2 mm	Width (inches)	1.346 inch
Net weight	11.8 g		

Temperatures

Limit temperature	-40 °C ... 125 °C
-------------------	-------------------

General data

Material	Polycarbonate	Number of poles	2
Plugging cycles	≥ 500	Pollution severity	3
Rated current (DIN EN 61984)	40 A	Rated impulse voltage (DIN EN 61984)	8 kV
Rated voltage (DIN EN 61984)	830 V	Rated voltage according to UL/CSA	600 V
Required plug-in slots	1	Surge voltage category	III
Type	Male	UL 94 flammability rating	V-0

PE connection data

Connection type PE	Screw connection via module frame
--------------------	-----------------------------------

Version

Conductor cross-section, max.	10 mm ²	Conductor cross-section, min.	1.5 mm ²
Type of connection	Crimp connection	Wire connection cross section AWG, max.	AWG 8
Wire connection cross section AWG, min.	AWG 16		

Classifications

ETIM 6.0	EC002312	ETIM 7.0	EC002312
ETIM 8.0	EC002312	ETIM 9.0	EC002312
ECLASS 9.0	27-44-02-92	ECLASS 9.1	27-44-02-18
ECLASS 10.0	27-44-02-92	ECLASS 11.0	27-44-02-92
ECLASS 12.0	27-44-02-92	ECLASS 13.0	27-44-02-92

Approvals

Approvals



ROHS	Conform
UL File Number Search	UL Website
Certificate No. (UR)	E92202

Downloads

Approval/Certificate/Document of Conformity	Manufacturer's declaration
Engineering Data	CAD data – STEP
Catalogues	Catalogues in PDF-format

Creation date May 3, 2024 12:34:12 PM CEST

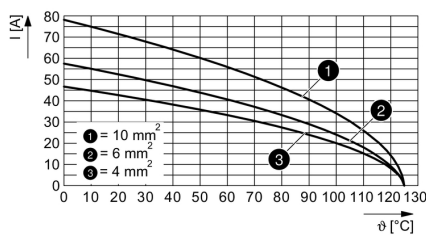
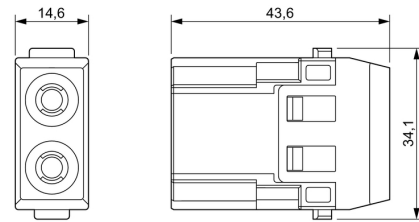
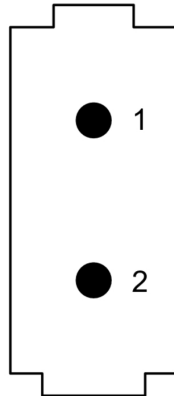
Catalogue status 20.04.2024 / We reserve the right to make technical changes.

HDC MHX 2 MC

Weidmüller Interface GmbH & Co. KG
Klingenbergstraße 26
D-32758 Detmold
Germany

www.weidmueller.com

Drawings



HDC MHX 2 MC**Weidmüller Interface GmbH & Co. KG**

Klingenbergstraße 26

D-32758 Detmold

Germany

www.weidmueller.com**Accessories****Standard****General ordering data**

Type	HDC MF 10B AC	Version
Order No.	1428960000	Frame
GTIN (EAN)	4050118233223	
Qty.	1 pc(s).	
Type	HDC MF 10B CA	Version
Order No.	1428980000	Frame
GTIN (EAN)	4050118233278	
Qty.	1 pc(s).	

Standard**General ordering data**

Type	HDC MF 16B DA	Version
Order No.	1429030000	Frame
GTIN (EAN)	4050118233407	
Qty.	1 pc(s).	
Type	HDC MF 16B AD	Version
Order No.	1429010000	Frame
GTIN (EAN)	4050118233315	
Qty.	1 pc(s).	

HDC MHX 2 MC**Weidmüller Interface GmbH & Co. KG**

Klingenbergstraße 26

D-32758 Detmold

Germany

www.weidmueller.com**Accessories****With long guiding pin****General ordering data**

Type	HDC MFGL 6B BA	Version
Order No.	2736980000	Frame
GTIN (EAN)	4050118822908	
Qty.	1 pc(s).	
Type	HDC MFGL 6B AB	Version
Order No.	2736970000	Frame
GTIN (EAN)	4050118823035	
Qty.	1 pc(s).	

With long guiding pin**General ordering data**

Type	HDC MFGL 10B AC	Version
Order No.	2736990000	Frame
GTIN (EAN)	4050118823042	
Qty.	1 pc(s).	
Type	HDC MFGL 10B CA	Version
Order No.	2737000000	Frame
GTIN (EAN)	4050118823059	
Qty.	1 pc(s).	

HDC MHX 2 MC**Weidmüller Interface GmbH & Co. KG**

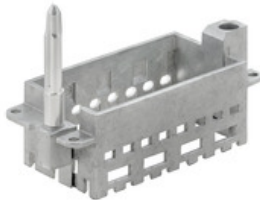
Klingenbergstraße 26

D-32758 Detmold

Germany

www.weidmueller.com**Accessories****With short guiding pin****General ordering data**

Type	HDC MFGS 16B DA	Version
Order No.	2736940000	Frame
GTIN (EAN)	4050118823004	
Qty.	1 pc(s).	
Type	HDC MFGS 16B AD	Version
Order No.	2736930000	Frame
GTIN (EAN)	4050118822298	
Qty.	1 pc(s).	

With long guiding pin**General ordering data**

Type	HDC MFGL 16B DA	Version
Order No.	2737020000	Frame
GTIN (EAN)	4050118823073	
Qty.	1 pc(s).	
Type	HDC MFGL 16B AD	Version
Order No.	2737010000	Frame
GTIN (EAN)	4050118823066	
Qty.	1 pc(s).	

HDC MHX 2 MC**Weidmüller Interface GmbH & Co. KG**

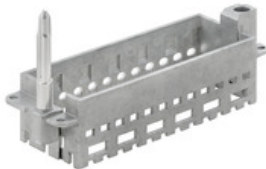
Klingenbergstraße 26

D-32758 Detmold

Germany

www.weidmueller.com**Accessories****Standard****General ordering data**

Type	HDC MF 6B BA	Version
Order No.	1428940000	Frame
GTIN (EAN)	4050118233353	
Qty.	1 pc(s).	
Type	HDC MF 6B AB	Version
Order No.	1428920000	Frame
GTIN (EAN)	4050118233414	
Qty.	1 pc(s).	

With long guiding pin**General ordering data**

Type	HDC MFGL 24B FA	Version
Order No.	2737040000	Frame
GTIN (EAN)	4050118823097	
Qty.	1 pc(s).	
Type	HDC MFGL 24B AF	Version
Order No.	2737030000	Frame
GTIN (EAN)	4050118823080	
Qty.	1 pc(s).	

HDC MHX 2 MC**Weidmüller Interface GmbH & Co. KG**

Klingenbergstraße 26

D-32758 Detmold

Germany

www.weidmueller.com**Accessories****With short guiding pin****General ordering data**

Type	HDC MFGS 6B BA	Version
Order No.	2736900000	Frame
GTIN (EAN)	4050118822267	
Qty.	1 pc(s).	
Type	HDC MFGS 6B AB	Version
Order No.	2736890000	Frame
GTIN (EAN)	4050118822250	
Qty.	1 pc(s).	

With short guiding pin**General ordering data**

Type	HDC MFGS 24B FA	Version
Order No.	2736960000	Frame
GTIN (EAN)	4050118823028	
Qty.	1 pc(s).	
Type	HDC MFGS 24B AF	Version
Order No.	2736950000	Frame
GTIN (EAN)	4050118823011	
Qty.	1 pc(s).	

HDC MHX 2 MC

Weidmüller Interface GmbH & Co. KG

Klingenbergstraße 26

D-32758 Detmold

Germany

www.weidmueller.com

Accessories

Standard



General ordering data

Type	HDC MF 24B FA	Version
Order No.	1429070000	Frame
GTIN (EAN)	4050118233520	
Qty.	1 pc(s).	
Type	HDC MF 24B AF	Version
Order No.	1429050000	Frame
GTIN (EAN)	4050118233285	
Qty.	1 pc(s).	

With short guiding pin



General ordering data

Type	HDC MFGS 10B AC	Version
Order No.	2736910000	Frame
GTIN (EAN)	4050118822274	
Qty.	1 pc(s).	
Type	HDC MFGS 10B CA	Version
Order No.	2736920000	Frame
GTIN (EAN)	4050118822281	
Qty.	1 pc(s).	

HDC MHX 2 MC

Weidmüller Interface GmbH & Co. KG

Klingenbergstraße 26

D-32758 Detmold

Germany

www.weidmueller.com

Accessories

Crimp contacts HX



Crimps provide a electrical and mechanical connection between wire and contact that is both secure and reliable. The optimal crimp connection is gas-tight and corrosion-resistant.

General ordering data

Type	HDC C HX SM4.0AG	Version
Order No.	1002930000	Heavy-duty connectors, Crimp contact, MixMate, Male, Conductor
GTIN (EAN)	4032248697212	cross-section, max.: 4, turned, Copper alloy
Qty.	25 pc(s).	
Type	HDC C HX SM2.5AG	Version
Order No.	1002920000	Heavy-duty connectors, Crimp contact, MixMate, Male, Conductor
GTIN (EAN)	4032248697106	cross-section, max.: 2.5, turned, Copper alloy
Qty.	25 pc(s).	
Type	HDC C HX SM1.5AG	Version
Order No.	1002910000	Heavy-duty connectors, Crimp contact, MixMate, Male, Conductor
GTIN (EAN)	4032248697090	cross-section, max.: 1.5, turned, Copper alloy
Qty.	25 pc(s).	
Type	HDC C HX SM6.0AG	Version
Order No.	1002940000	Heavy-duty connectors, Crimp contact, MixMate, Male, Conductor
GTIN (EAN)	4032248697229	cross-section, max.: 6, turned, Copper alloy
Qty.	25 pc(s).	
Type	HDC C MHX SM10.0AG	Version
Order No.	2494550000	Heavy-duty connectors, Crimp contact, Male, Conductor cross-section,
GTIN (EAN)	4050118504521	max.: 8, turned, Copper alloy
Qty.	25 pc(s).	