

**HDC MHP 70 FAS****Weidmüller Interface GmbH & Co. KG**

Klingenbergstraße 26

D-32758 Detmold

Germany

[www.weidmueller.com](http://www.weidmueller.com)**Flexible**

The four module sizes make for individual plug solutions that save a huge amount of space. The smaller pitch translates into an optimised design too.

**General ordering data**

|            |                            |
|------------|----------------------------|
| Version    | Power module               |
| Order No.  | <a href="#">2748310000</a> |
| Type       | HDC MHP 70 FAS             |
| GTIN (EAN) | 4050118890884              |
| Qty.       | 2 pc(s).                   |

## HDC MHP 70 FAS

Weidmüller Interface GmbH &amp; Co. KG

Klingenbergstraße 26

D-32758 Detmold

Germany

www.weidmueller.com

## Technical data

## Dimensions and weights

|            |         |                 |            |
|------------|---------|-----------------|------------|
| Depth      | 34 mm   | Depth (inches)  | 1.339 inch |
| Height     | 45 mm   | Height (inches) | 1.772 inch |
| Width      | 34.2 mm | Width (inches)  | 1.346 inch |
| Net weight | 8.64 g  |                 |            |

## Temperatures

|                   |                   |
|-------------------|-------------------|
| Limit temperature | -40 °C ... 125 °C |
|-------------------|-------------------|

## General data

|                                      |               |                              |               |
|--------------------------------------|---------------|------------------------------|---------------|
| Insulating material                  | Polycarbonate | Material                     | Polycarbonate |
| Number of poles                      | 2             | Plugging cycles              | ≥ 500         |
| Pollution severity                   | 3             | Rated current (DIN EN 61984) | 70 A          |
| Rated impulse voltage (DIN EN 61984) | 8 kV          | Rated voltage (DIN EN 61984) | 1,000 V       |
| Rated voltage according to UL/CSA    | 600 V         | Required plug-in slots       | 1             |
| Series                               | ModuPlug      | Surge voltage category       | III           |
| Type                                 | Female        | UL 94 flammability rating    | V-0           |

## PE connection data

|                    |                                   |
|--------------------|-----------------------------------|
| Connection type PE | Screw connection via module frame |
|--------------------|-----------------------------------|

## Version

|                                    |                    |                               |                        |
|------------------------------------|--------------------|-------------------------------|------------------------|
| Conductor cross-section, max.      | 25 mm <sup>2</sup> | Conductor cross-section, min. | 4 mm <sup>2</sup>      |
| Stripping length, rated connection | 11.5 mm            | Type of connection            | Axial screw connection |

## Classifications

|             |             |             |             |
|-------------|-------------|-------------|-------------|
| ETIM 6.0    | EC002312    | ETIM 7.0    | EC002312    |
| ETIM 8.0    | EC002312    | ETIM 9.0    | EC002312    |
| ECLASS 9.0  | 27-44-02-92 | ECLASS 9.1  | 27-44-02-18 |
| ECLASS 10.0 | 27-44-02-92 | ECLASS 11.0 | 27-44-02-92 |
| ECLASS 12.0 | 27-44-02-92 | ECLASS 13.0 | 27-44-02-92 |

## Environmental Product Compliance

|            |                                      |
|------------|--------------------------------------|
| REACH SVHC | Lead 7439-92-1                       |
| SCIP       | fa505316-3e43-4ad0-930c-360dfdbe182a |

## Approvals

Approvals



|                       |            |
|-----------------------|------------|
| ROHS                  | Conform    |
| UL File Number Search | UL Website |
| Certificate No. (UR)  | E92202     |

## HDC MHP 70 FAS

**Weidmüller Interface GmbH & Co. KG**  
Klingenbergstraße 26  
D-32758 Detmold  
Germany

[www.weidmueller.com](http://www.weidmueller.com)

## Technical data

### Downloads

Approval/Certificate/Document of Con-  
formity

[Manufacturer's declaration](#)

Engineering Data

[CAD data – STEP](#)

Catalogues

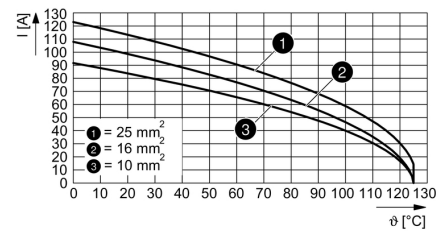
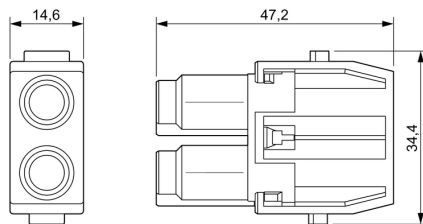
[Catalogues in PDF-format](#)

## HDC MHP 70 FAS

**Weidmüller Interface GmbH & Co. KG**  
Klingenbergstraße 26  
D-32758 Detmold  
Germany

[www.weidmueller.com](http://www.weidmueller.com)

## Drawings



**HDC MHP 70 FAS****Weidmüller Interface GmbH & Co. KG**

Klingenbergstraße 26

D-32758 Detmold

Germany

[www.weidmueller.com](http://www.weidmueller.com)**Accessories****With short guiding pin****General ordering data**

|            |                            |         |
|------------|----------------------------|---------|
| Type       | HDC MFGS 16B DA            | Version |
| Order No.  | <a href="#">2736940000</a> | Frame   |
| GTIN (EAN) | 4050118823004              |         |
| Qty.       | 1 pc(s).                   |         |
| Type       | HDC MFGS 16B AD            | Version |
| Order No.  | <a href="#">2736930000</a> | Frame   |
| GTIN (EAN) | 4050118822298              |         |
| Qty.       | 1 pc(s).                   |         |

**Standard****General ordering data**

|            |                            |         |
|------------|----------------------------|---------|
| Type       | HDC MF 6B BA               | Version |
| Order No.  | <a href="#">1428940000</a> | Frame   |
| GTIN (EAN) | 4050118233353              |         |
| Qty.       | 1 pc(s).                   |         |
| Type       | HDC MF 6B AB               | Version |
| Order No.  | <a href="#">1428920000</a> | Frame   |
| GTIN (EAN) | 4050118233414              |         |
| Qty.       | 1 pc(s).                   |         |

**HDC MHP 70 FAS****Weidmüller Interface GmbH & Co. KG**

Klingenbergstraße 26

D-32758 Detmold

Germany

[www.weidmueller.com](http://www.weidmueller.com)**Accessories****Standard****General ordering data**

|            |                            |         |
|------------|----------------------------|---------|
| Type       | HDC MF 16B AD              | Version |
| Order No.  | <a href="#">1429010000</a> | Frame   |
| GTIN (EAN) | 4050118233315              |         |
| Qty.       | 1 pc(s).                   |         |
| Type       | HDC MF 16B DA              | Version |
| Order No.  | <a href="#">1429030000</a> | Frame   |
| GTIN (EAN) | 4050118233407              |         |
| Qty.       | 1 pc(s).                   |         |

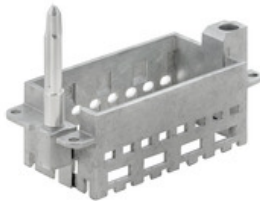
**With short guiding pin****General ordering data**

|            |                            |         |
|------------|----------------------------|---------|
| Type       | HDC MFGS 6B AB             | Version |
| Order No.  | <a href="#">2736890000</a> | Frame   |
| GTIN (EAN) | 4050118822250              |         |
| Qty.       | 1 pc(s).                   |         |
| Type       | HDC MFGS 6B BA             | Version |
| Order No.  | <a href="#">2736900000</a> | Frame   |
| GTIN (EAN) | 4050118822267              |         |
| Qty.       | 1 pc(s).                   |         |

**HDC MHP 70 FAS**

**Weidmüller Interface GmbH & Co. KG**  
Klingenbergstraße 26  
D-32758 Detmold  
Germany

[www.weidmueller.com](http://www.weidmueller.com)

**Accessories****With long guiding pin****General ordering data**

|            |                            |         |
|------------|----------------------------|---------|
| Type       | HDC MFL 16B AD             | Version |
| Order No.  | <a href="#">2737010000</a> | Frame   |
| GTIN (EAN) | 4050118823066              |         |
| Qty.       | 1 pc(s).                   |         |
| Type       | HDC MFL 16B DA             | Version |
| Order No.  | <a href="#">2737020000</a> | Frame   |
| GTIN (EAN) | 4050118823073              |         |
| Qty.       | 1 pc(s).                   |         |

**With short guiding pin****General ordering data**

|            |                            |         |
|------------|----------------------------|---------|
| Type       | HDC MFL 24B AF             | Version |
| Order No.  | <a href="#">2736950000</a> | Frame   |
| GTIN (EAN) | 4050118823011              |         |
| Qty.       | 1 pc(s).                   |         |
| Type       | HDC MFL 24B FA             | Version |
| Order No.  | <a href="#">2736960000</a> | Frame   |
| GTIN (EAN) | 4050118823028              |         |
| Qty.       | 1 pc(s).                   |         |

## HDC MHP 70 FAS

Weidmüller Interface GmbH &amp; Co. KG

Klingenbergstraße 26

D-32758 Detmold

Germany

[www.weidmueller.com](http://www.weidmueller.com)

## Accessories

## With long guiding pin



## General ordering data

|            |                            |         |
|------------|----------------------------|---------|
| Type       | HDC MFGL 10B CA            | Version |
| Order No.  | <a href="#">2737000000</a> | Frame   |
| GTIN (EAN) | 4050118823059              |         |
| Qty.       | 1 pc(s).                   |         |
| Type       | HDC MFGL 10B AC            | Version |
| Order No.  | <a href="#">2736990000</a> | Frame   |
| GTIN (EAN) | 4050118823042              |         |
| Qty.       | 1 pc(s).                   |         |

## With long guiding pin



## General ordering data

|            |                            |         |
|------------|----------------------------|---------|
| Type       | HDC MFGL 24B FA            | Version |
| Order No.  | <a href="#">2737040000</a> | Frame   |
| GTIN (EAN) | 4050118823097              |         |
| Qty.       | 1 pc(s).                   |         |
| Type       | HDC MFGL 24B AF            | Version |
| Order No.  | <a href="#">2737030000</a> | Frame   |
| GTIN (EAN) | 4050118823080              |         |
| Qty.       | 1 pc(s).                   |         |



## HDC MHP 70 FAS

Weidmüller Interface GmbH &amp; Co. KG

Klingenbergstraße 26

D-32758 Detmold

Germany

www.weidmueller.com

## Accessories

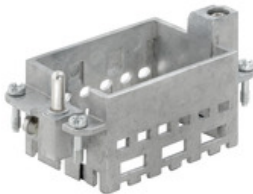
## With long guiding pin



## General ordering data

|            |                            |         |
|------------|----------------------------|---------|
| Type       | HDC MFGL 6B AB             | Version |
| Order No.  | <a href="#">2736970000</a> | Frame   |
| GTIN (EAN) | 4050118823035              |         |
| Qty.       | 1 pc(s).                   |         |
| Type       | HDC MFGL 6B BA             | Version |
| Order No.  | <a href="#">2736980000</a> | Frame   |
| GTIN (EAN) | 4050118822908              |         |
| Qty.       | 1 pc(s).                   |         |

## Standard



## General ordering data

|            |                            |         |
|------------|----------------------------|---------|
| Type       | HDC MF 10B AC              | Version |
| Order No.  | <a href="#">1428960000</a> | Frame   |
| GTIN (EAN) | 4050118233223              |         |
| Qty.       | 1 pc(s).                   |         |
| Type       | HDC MF 10B CA              | Version |
| Order No.  | <a href="#">1428980000</a> | Frame   |
| GTIN (EAN) | 4050118233278              |         |
| Qty.       | 1 pc(s).                   |         |

**HDC MHP 70 FAS****Weidmüller Interface GmbH & Co. KG**

Klingenbergstraße 26

D-32758 Detmold

Germany

[www.weidmueller.com](http://www.weidmueller.com)**Accessories****Standard****General ordering data**

|            |                            |         |
|------------|----------------------------|---------|
| Type       | HDC MF 24B FA              | Version |
| Order No.  | <a href="#">1429070000</a> | Frame   |
| GTIN (EAN) | 4050118233520              |         |
| Qty.       | 1 pc(s).                   |         |
| Type       | HDC MF 24B AF              | Version |
| Order No.  | <a href="#">1429050000</a> | Frame   |
| GTIN (EAN) | 4050118233285              |         |
| Qty.       | 1 pc(s).                   |         |

**With short guiding pin****General ordering data**

|            |                            |         |
|------------|----------------------------|---------|
| Type       | HDC MFGS 10B AC            | Version |
| Order No.  | <a href="#">2736910000</a> | Frame   |
| GTIN (EAN) | 4050118822274              |         |
| Qty.       | 1 pc(s).                   |         |
| Type       | HDC MFGS 10B CA            | Version |
| Order No.  | <a href="#">2736920000</a> | Frame   |
| GTIN (EAN) | 4050118822281              |         |
| Qty.       | 1 pc(s).                   |         |