

CABTITE EP A 24/26 GY**Weidmüller Interface GmbH & Co. KG**

Klingenbergstraße 26

D-32758 Detmold

Germany

www.weidmueller.com**Cabtite - Cable Entry Plates**

Insert cables and wires without plugs into control cabinets, enclosures or machines in the smallest of spaces, easily and in a space-saving manner.

With the Cabtite cable entry plates, you can do this even in harsh environments, whether protective hoses, pneumatic/hydraulic hoses or fiber optic cables - you can install your cables quickly, easily and in a space-saving manner. The installation is done through only one rectangular wall cut-out and is therefore up to 40% faster in the installation time (compared to standard cable glands).

The tool less IP54 snap version of cable entry plates are tested according to DIN EN 60529 and made of UL94 V-0 certified TPE material, suitable for the temperature range from -40°C to +90°C.

Cabtite cable entry plates are an economical alternative to conventional cable glands.

General ordering data

Version	Cable entry plate, Cabtite (cable entry system), TPE, grey, Height: 44 mm, Width: 142 mm, Depth: 12 mm, -40 °C...90 °C, IP54
Order No.	2743590000
Type	CABTITE EP A 24/26 GY
GTIN (EAN)	4064675 123309
Qty.	10 pc(s).

CABTITE EP A 24/26 GY**Weidmüller Interface GmbH & Co. KG**

Klingenbergstraße 26

D-32758 Detmold

Germany

www.weidmueller.com

Technical data**Dimensions and weights**

Depth	12 mm	Depth (inches)	0.472 inch
Height	44 mm	Height (inches)	1.732 inch
Width	142 mm	Width (inches)	5.591 inch
Wall thickness, min.	1.5 mm	Wall thickness, max.	2.5 mm
Net weight	42.4 g		

Temperatures

Operating temperature -40 °C...90 °C

General information

Material	TPE	Protection class (UL)	Type 1, Type 12
Protection degree	IP54	Silicone	No
UL 94 flammability rating	V-0		

Number of connectable cables

Type of mounting	Snap-on	
Number of connectable cables	26	
Cable entries	Number	16
	Cable diameter, min.	1 mm
	Cable diameter, max.	6.5 mm
	Cable type	Round cable
	Number	4
	Cable diameter, min.	1 mm
	Cable diameter, max.	12.1 mm
	Cable type	Round cable
	Number	4
	Cable diameter, min.	1 mm
	Cable diameter, max.	16.1 mm
	Cable type	Round cable
	Number	2
	Cable type	ASI

Classifications

ETIM 6.0	EC002624	ETIM 7.0	EC002624
ETIM 8.0	EC002624	ETIM 9.0	EC002624
ECLASS 9.0	27-18-28-15	ECLASS 9.1	27-18-92-65
ECLASS 10.0	27-18-28-15	ECLASS 11.0	27-18-28-15
ECLASS 12.0	27-18-28-15	ECLASS 13.0	27-18-28-15

Approvals

Approvals



ROHS	Conform
UL File Number Search	UL Website
Certificate No. (cURus)	E223801

CABTITE EP A 24/26 GY

Weidmüller Interface GmbH & Co. KG

Klingenbergstraße 26

D-32758 Detmold

Germany

www.weidmueller.com

Technical data

Downloads

Approval/Certificate/Document of Conformity

[EU Declaration of Conformity - Cabtite EP - DoC DE PS2483](#)

Engineering Data

[CAD data – STEP](#)

User Documentation

[INSTR CABTITE EP DE/EN](#)

Catalogues

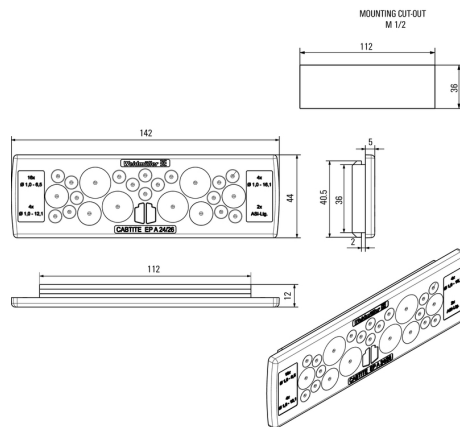
[Catalogues in PDF-format](#)

CABTITE EP A 24/26 GY

Weidmüller Interface GmbH & Co. KG
Klingenbergstraße 26
D-32758 Detmold
Germany

www.weidmueller.com

Drawings



CABTITE EP A 24/26 GY**Weidmüller Interface GmbH & Co. KG**

Klingenbergstraße 26

D-32758 Detmold

Germany

www.weidmueller.com**Accessories****Rectangular splitting stamp for heavy-duty connectors**

Weidmüller punching tools should be your first choice for making cut-outs in your electrical cabinets!

- PG cable glands
- M cable glands
- Special cable glands

General ordering data

Type	KOK-112X36	Version
Order No.	9204870000	Sheet holes
GTIN (EAN)	4032248693801	
Qty.	1 pc(s).	