

IE-FCM-RJ45-C-X-100**Weidmüller Interface GmbH & Co. KG**

Klingenbergstraße 26

D-32758 Detmold

Germany

www.weidmueller.comService interface FrontCom[®] Micro with RJ45 in IP65**General ordering data**

Version	FrontCom Micro RJ45 coupling
Order No.	2742310000
Type	IE-FCM-RJ45-C-X-100
GTIN (EAN)	4050118844511
Qty.	100 pc(s).

IE-FCM-RJ45-C-X-100

Weidmüller Interface GmbH & Co. KG

Klingenbergstraße 26

D-32758 Detmold

Germany

www.weidmueller.com

Technical data

Dimensions and weights

Wall thickness, min.	1 mm	Wall thickness, max.	5 mm
Net weight	27.016 g		

Temperatures

Operating temperature	-40 °C...70 °C
-----------------------	----------------

General data

Tightening torque fixing nut	2 Nm	Connection 1	RJ45
Connection 2	RJ45	Description of article	FrontCom Micro RJ45 coupling
Colour	black	Housing main material	PA UL 94 V0
Category	Cat.6A / Class EA (ISO/IEC 11801 2010)	Contact surface	Gold over nickel
Type of mounting	Cabinet, Distribution box	Shielding	360° shield contact
Protection degree	IP65, in closed state	Plugging cycles	750

Electrical properties

Dielectric strength, contact / contact	≥ 1000 V AC/DC	Dielectric strength, contact / shield	≥ 1500 V AC/DC
PoE / PoE+	conforming to IEEE 802.3af		

General standards

Connector standard	IEC 60603-7-51
--------------------	----------------

Classifications

ETIM 6.0	EC001031	ETIM 7.0	EC001031
ETIM 8.0	EC001031	ETIM 9.0	EC001031
ECLASS 9.0	27-18-27-02	ECLASS 9.1	27-18-27-90
ECLASS 10.0	27-18-27-02	ECLASS 11.0	27-18-27-02
ECLASS 12.0	27-18-28-92	ECLASS 13.0	27-18-28-92

Approvals

ROHS	Conform
------	---------

Downloads

Engineering Data	CAD data – STEP
Product Change Notification	Technical change of the housing of the FrontCom® Micro Technische Änderung des Gehäuses der FrontCom® Micro
Catalogues	Catalogues in PDF-format

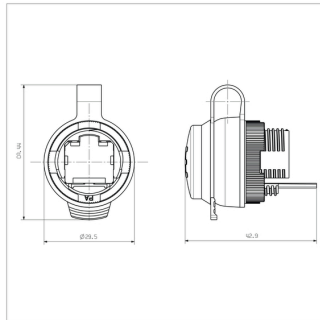
IE-FCM-RJ45-C-X-100

Weidmüller Interface GmbH & Co. KG
Klingenbergstraße 26
D-32758 Detmold
Germany

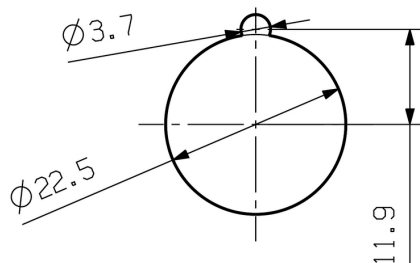
www.weidmueller.com

Drawings

Dimensioned drawing



Installation cut-out



IE-FCM-RJ45-C-X-100**Weidmüller Interface GmbH & Co. KG**

Klingenbergstraße 26

D-32758 Detmold

Germany

www.weidmueller.com**Accessories****Complementary products**

SM is a MultiCard marker for labelling control and signalling devices. The tags are clipped into the carriers or attached by means of the adhesive film already fitted to them. Customised tags can be created with the PrintJet CONNECT or Plotter marking systems.

- Users can quickly produce tags to suit their needs
- No need to stock expensive standard tags
- Highly resistant printing quality when using the PrintJet as a substitute for engraving
- For extreme demands, we recommend the ETO SM protective film
- Holders can be used for the 22-mm or 30-mm-diameter push-buttons from Siemens, ABB, Moeller and Télémécanique

For custom printing: Please send us a file of our labeling software M-Print PRO or M-Print PRO Online (without installation) for your labeling specifications.

General ordering data

Type	SM-H 27/18 SW	Version
Order No.	1716630000	SwitchMark, Accessories, 48 x 27 mm, black
GTIN (EAN)	4008190343194	
Qty.	25 pc(s).	