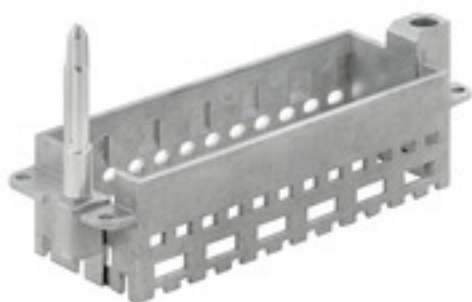


**HDC MFGL 24B FA****Weidmüller Interface GmbH & Co. KG**

Klingenbergstraße 26

D-32758 Detmold

Germany

[www.weidmueller.com](http://www.weidmueller.com)**General ordering data**

Version	Frame
Order No.	<a href="#">2737040000</a>
Type	HDC MFGL 24B FA
GTIN (EAN)	4050118823097
Qty.	1 pc(s).

**HDC MFGL 24B FA****Weidmüller Interface GmbH & Co. KG**

Klingenbergstraße 26

D-32758 Detmold

Germany

[www.weidmueller.com](http://www.weidmueller.com)**Technical data****Dimensions and weights**

Net weight	91.7 g
------------	--------

**General data**

Material	Diecast zinc	Number of slots	6
Plugging cycles	≥ 500	Series	ModuPlug
Size	8	Version of guiding pin	long

**Classifications**

ETIM 6.0	EC002312	ETIM 7.0	EC002312
ETIM 8.0	EC002312	ETIM 9.0	EC002312
ECLASS 9.0	27-44-02-06	ECLASS 9.1	27-44-02-06
ECLASS 10.0	27-44-02-06	ECLASS 11.0	27-44-02-06
ECLASS 12.0	27-44-02-92	ECLASS 13.0	27-44-02-92

**Environmental Product Compliance**

REACH SVHC	Lead 7439-92-1
SCIP	425d5315-3039-4ee5-aab3-6b6a65cc297f

**Important note**

Product information	The PE connection is no longer available for the version with guide pin.
---------------------	--

**Downloads**

Catalogues	<a href="#">Catalogues in PDF-format</a>
------------	--

## HDC MFGL 24B FA

**Weidmüller Interface GmbH & Co. KG**  
Klingenbergstraße 26  
D-32758 Detmold  
Germany

[www.weidmueller.com](http://www.weidmueller.com)

## Drawings

