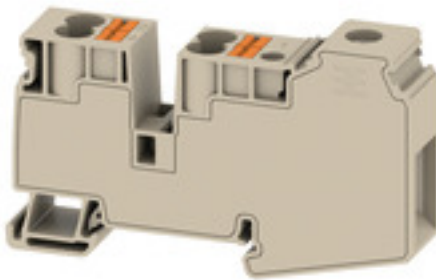


AWPD 35 4X10**Weidmüller Interface GmbH & Co. KG**

Klingenbergstraße 26

D-32758 Detmold

Germany

www.weidmueller.com

Our feed-in terminal blocks in combination with cross-connections offer the possibility of flexible potential distribution on terminal blocks with a different rated cross-section.

General ordering data

Version	Potential distributor terminal, Screw connection, 35, 1000 V, 110 A, Number of connections: 5, TS 35, dark beige, Colour of operational elements: orange
Order No.	2728630000
Type	AWPD 35 4X10
GTIN (EAN)	4050118801118
Qty.	20 pc(s).

AWPD 35 4X10

Weidmüller Interface GmbH & Co. KG

Klingenbergstraße 26

D-32758 Detmold

Germany

www.weidmueller.com

Technical data

Dimensions and weights

Depth	60 mm	Depth (inches)	2.362 inch
Height	95 mm	Height (inches)	3.74 inch
Width	16.2 mm	Width (inches)	0.638 inch
Net weight	40 g		

Temperatures

Storage temperature	-25 °C...55 °C	Continuous operating temp., min.	-60 °C
Continuous operating temp., max.	110 °C		

Material data

Material	Wemid	Colour	dark beige
Colour of operational elements	orange	UL 94 flammability rating	V-0

System specifications

Version	Hybrid terminal, Potential distributor	End cover plate required	No
Number of potentials	1	Number of levels	1
Number of clamping points per level	5	Number of potentials per tier	1
Rail	TS 35	N-function	No
PE function	No	PEN function	No

Additional technical data

Explosion-tested version	No	Open sides	closed
Snap-on	Yes	Type of mounting	TS 35

Conductors for clamping (additional connection)

Blade size, additional connection	1.0 x 5.5 mm	Clamping range, further connection, max.	10 mm ²
Clamping range, further connection, min.	1 mm ²	Conductor cross-section, flexible plus plastic collar DIN 46228/1, further connection, max.	10 mm ²
Conductor cross-section, flexible plus plastic collar DIN 46228/1, further connection, min.	1 mm ²	Conductor cross-section, flexible, further connection, min.	1 mm ²
Connection direction	top	Connection type, additional connection	PUSH IN
Cross-section for connected wire, AWG, additional connection, max.	AWG 6	Cross-section for connected wire, AWG, additional connection, min.	AWG 20
Cross-section for connected wire, flexible, further connection, max.	10 mm ²	Cross-section for connected wire, solid-core, further connection, max.	10 mm ²
Cross-section for connected wire, solid-core, further connection, min.	1 mm ²	Number of connections, additional connection	4
Rated cross-section, further connection	10 mm ²	Stripping length, additional connection	18 mm

AWPD 35 4X10

Weidmüller Interface GmbH & Co. KG

Klingenbergstraße 26

D-32758 Detmold

Germany

www.weidmueller.com

Technical data

Conductors for clamping (rated connection)

Blade size	1 x 5.5	Clamping range, max.	35 mm ²
Clamping range, min.	1.5 mm ²	Clamping screw	M 6
Connection direction	top	Gauge to IEC 60947-1	B9
Number of connections	5	Stripping length	17 mm
Tightening torque, max.	2.5 Nm	Tightening torque, min.	2.5 Nm
Twin wire-end ferrules, max.	6 mm ²	Twin wire-end ferrules, min.	1.5 mm ²
Type of connection	Screw connection	Wire connection cross section AWG, max.	AWG 14
Wire connection cross section AWG, min.	AWG 2	Wire connection cross section, finely stranded, max.	35 mm ²
Wire connection cross section, finely stranded, min.	1.5 mm ²	Wire connection cross-section, finely stranded with wire-end ferrules DIN 46228/1, max.	35 mm ²
Wire connection cross-section, finely stranded with wire-end ferrules DIN 46228/1, min.	1.5 mm ²	Wire connection cross-section, finely stranded with wire-end ferrules DIN 46228/4, max.	35 mm ²
Wire connection cross-section, solid core, max.	35 mm ²	Wire connection cross-section, solid core, min.	1.5 mm ²

General

Rail	TS 35	Standards	IEC 60947-7-1
Wire connection cross section AWG, max.	AWG 14	Wire connection cross section AWG, min.	AWG 2

Rating data

Rated cross-section	35 mm ²	Rated voltage	1,000 V
Rated AC voltage	1,000 V	Rated DC voltage	1,000 V
Rated current	110 A	Current at maximum wires	110 A
Standards	IEC 60947-7-1	Volume resistance according to IEC 60947-7-x	0.26 mΩ
Rated impulse withstand voltage	8 kV	Power loss in accordance with IEC 60947-7-x	4 W
Pollution severity	3	Surge voltage category	III

UL rating data

Certificate No. (cURus)	E60693	Conductor size Factory wiring max. (cURus)	2 AWG
Conductor size Factory wiring min. (cURus)	14 AWG	Conductor size Field wiring max. (cURus)	2 AWG
Conductor size Field wiring min. (cURus)	14 AWG		

Classifications

ETIM 6.0	EC000897	ETIM 7.0	EC000897
ETIM 8.0	EC000897	ETIM 9.0	EC000897
ECLASS 9.0	27-14-11-20	ECLASS 9.1	27-14-11-20
ECLASS 10.0	27-14-11-20	ECLASS 11.0	27-14-11-20
ECLASS 12.0	27-14-11-20	ECLASS 13.0	27-25-01-19

AWPD 35 4X10

Weidmüller Interface GmbH & Co. KG

Klingenbergstraße 26

D-32758 Detmold

Germany

www.weidmueller.com

Technical data

Approvals

Approvals



ROHS Conform

UL File Number Search UL Website

Certificate No. (cURus) E60693

Downloads

Approval/Certificate/Document of Conformity [CE Declaration of Conformity](#)
[UKCA declaration of conformity](#)
[Confirmation of Standards EN 45545-2_2020-10](#)

Engineering Data [CAD data – STEP](#)Catalogues [Catalogues in PDF-format](#)

AWPD 35 4X10

Weidmüller Interface GmbH & Co. KG
Klingenbergstraße 26
D-32758 Detmold
Germany

www.weidmueller.com

Drawings

