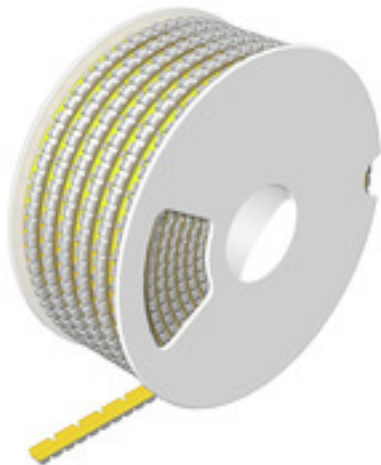


**SFM 2/12 1.8-2.5 MM GE****Weidmüller Interface GmbH & Co. KG**

Klingenbergstraße 26

D-32758 Detmold

Germany

[www.weidmueller.com](http://www.weidmueller.com)

With the comprehensive MultiMark product family, you can achieve optimally structured and sustainable marking in every control cabinet. An example of this is our new SlimFix wire marker, which can be printed and snapped on particularly quickly. At the same time, they meet the highest requirements for vibration and shock resistance. The wire markers have an open design and can be easily and quickly installed before or after the wiring process.

**General ordering data**

Version	Conductor and cable markers, 1.8 - 2.5 mm, 12 x 4.6 mm, yellow
Order No.	<a href="#">2719120000</a>
Type	SFM 2/12 1.8-2.5 MM GE
GTIN (EAN)	4050118888157
Qty.	1,400 pc(s).
compatible printer	<a href="#">2599430000</a>

## SFM 2/12 1.8-2.5 MM GE

Weidmüller Interface GmbH &amp; Co. KG

Klingenbergstraße 26

D-32758 Detmold

Germany

www.weidmueller.com

## Technical data

## Dimensions and weights

Height	12 mm	Height (inches)	0.472 inch
Width	4.6 mm	Width (inches)	0.181 inch
Net weight	0.212 g		

## General data

Colour	yellow	Halogen	No
Material	PC-ABS, TPU	Number per roll	1,400
Operating temperature range, max.	90 °C	Operating temperature range, min.	-50 °C
Size of labelling field	3.3 x 9.5 mm	Type of printing	neutral
UL 94 flammability rating	V-2	Version	with snap-in foot
Width	4.6 mm		

## Conductor and cable markers

Conductor O.D.	1.8 - 2.5 mm	Conductor O.D., max.	2.5 mm
Conductor O.D., min.	1.8 mm	Conductor cross-section, max.	1.5 mm <sup>2</sup>
Conductor cross-section, min.	0.75 mm <sup>2</sup>	Cross-section for connected wire	0.75 - 1.5 mm <sup>2</sup>
Halogen	No		

## Classifications

ETIM 6.0	EC001530	ETIM 7.0	EC001530
ETIM 8.0	EC001530	ETIM 9.0	EC001530
ECLASS 9.0	27-40-04-01	ECLASS 9.1	27-40-04-01
ECLASS 10.0	27-40-04-01	ECLASS 11.0	27-28-11-02
ECLASS 12.0	27-28-11-02	ECLASS 13.0	27-28-11-02

## Approvals

ROHS	Conform
------	---------

## Downloads

Engineering Data	<a href="#">CAD data – STEP</a>
Catalogues	<a href="#">Catalogues in PDF-format</a>

### SFM 2/12 1.8-2.5 MM GE

**Weidmüller Interface GmbH & Co. KG**

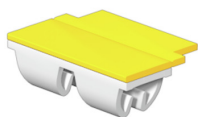
Klingenbergstraße 26

D-32758 Detmold

Germany

[www.weidmueller.com](http://www.weidmueller.com)

## Drawings



**SFM 2/12 1.8-2.5 MM GE****Weidmüller Interface GmbH & Co. KG**

Klingenbergstraße 26

D-32758 Detmold

Germany

[www.weidmueller.com](http://www.weidmueller.com)**Accessories****Ink ribbons**

These printers produce excellent printing results thanks to the thermal transfer technique. Different materials and the user-friendly printing system under Windows optimise marking efforts.

**General ordering data**

Type	RIBBON MM-TB 25/360 SW	Version
Order No.	<a href="#">2005090000</a>	Ink ribbon
GTIN (EAN)	4050118390216	
Qty.	1 pc(s).	

**THM MULTIMARK**

These printers produce excellent printing results thanks to the thermal transfer technique. Different materials and the user-friendly printing system under Windows optimise marking efforts.

**General ordering data**

Type	THM MMP ROLLER SFM 2
Order No.	<a href="#">2786210000</a>
GTIN (EAN)	4064675063230
Qty.	1 pc(s).