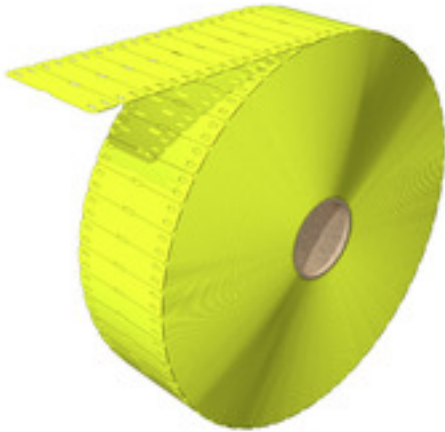


SFX 11/60 MM BP GE**Weidmüller Interface GmbH & Co. KG**

Klingenbergstraße 26

D-32758 Detmold

Germany

www.weidmueller.com**Highly flexible: SFX**

SFX markers are the preferred choice for labelling cables if you prefer the classic cable tie solution. Cables do not always run in a straight line. The material used in SFX markers addresses this fact with highly flexible polyurethane. The marker follows each curve of the cable and latches on with ease.

General ordering data

Version	SlimFix, Conductor and cable markers, 7 - 40 mm, 60 x 13 mm, yellow
Order No.	2712120000
Type	SFX 11/60 MM BP GE
GTIN (EAN)	4050118749816
Qty.	6,000 pc(s).
compatible printer	2599430000 2599440000

SFX 11/60 MM BP GE

Weidmüller Interface GmbH & Co. KG

Klingenbergstraße 26

D-32758 Detmold

Germany

www.weidmueller.com

Technical data

Dimensions and weights

Depth	0.6 mm	Depth (inches)	0.024 inch
Height	60 mm	Height (inches)	2.362 inch
Width	13 mm	Width (inches)	0.512 inch
Net weight	0.541 g		

Temperatures

Operating temperature range	-40...90 °C
-----------------------------	-------------

General data

Colour	yellow	Halogen	No
Material	Polyurethane	Number per roll	1,000
Operating temperature range	-40...90 °C	Operating temperature range, max.	90 °C
Operating temperature range, min.	-40 °C	Size of labelling field	44 x 10.5 mm
UL 94 flammability rating	HB	Version	halogen-free
Width	13 mm		

Conductor and cable markers

Cable tie passage	Flat	Conductor O.D.	7 - 40 mm
Conductor O.D., max.	40 mm	Conductor O.D., min.	7 mm
Conductor cross-section, max.	500 mm ²	Conductor cross-section, min.	16 mm ²
Cross-section for connected wire	16 - 500 mm ²	Halogen	No
Suitable cable tie	Plastic	Text field height	10.5 mm
Text field width	44 mm		

Classifications

ETIM 6.0	EC001530	ETIM 7.0	EC001530
ETIM 8.0	EC001530	ETIM 9.0	EC001530
ECLASS 9.0	27-40-04-01	ECLASS 9.1	27-40-04-01
ECLASS 10.0	27-40-04-01	ECLASS 11.0	27-28-11-02
ECLASS 12.0	27-28-11-02	ECLASS 13.0	27-28-11-02

Approvals

ROHS	Conform
------	---------

Downloads

Engineering Data	CAD data – STEP
Catalogues	Catalogues in PDF-format

SFX 11/60 MM BP GE

Weidmüller Interface GmbH & Co. KG

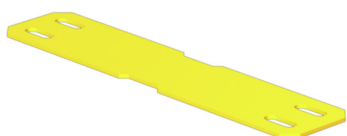
Klingenbergstraße 26

D-32758 Detmold

Germany

www.weidmueller.com

Drawings



SFX 11/60 MM BP GE**Weidmüller Interface GmbH & Co. KG**

Klingenbergstraße 26

D-32758 Detmold

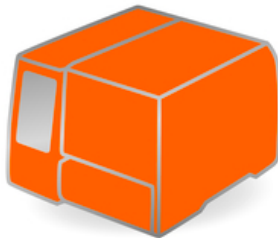
Germany

www.weidmueller.com**Accessories****Ink ribbons**

These printers produce excellent printing results thanks to the thermal transfer technique. Different materials and the user-friendly printing system under Windows optimise marking efforts.

General ordering data

Type	RIBBON MM 110/360 SW	Version
Order No.	2005070000	Ink ribbon
GTIN (EAN)	4050118390049	
Qty.	1 pc(s).	
Type	RIBBON MM 76/360 SW	Version
Order No.	2005080000	Ink ribbon
GTIN (EAN)	4050118389951	
Qty.	1 pc(s).	

THM MULTIMARK

These printers produce excellent printing results thanks to the thermal transfer technique. Different materials and the user-friendly printing system under Windows optimise marking efforts.

General ordering data

Type	THM MMP EXT.RH
Order No.	1302920000
GTIN (EAN)	4050118102307
Qty.	1 pc(s).