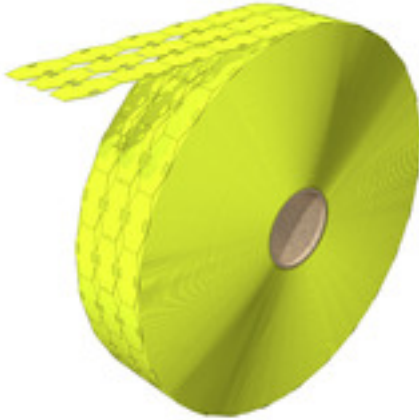


**SFX 9/24 MM BP GE****Weidmüller Interface GmbH & Co. KG**

Klingenbergstraße 26

D-32758 Detmold

Germany

[www.weidmueller.com](http://www.weidmueller.com)**Highly flexible: SFX**

SFX markers are the preferred choice for labelling cables if you prefer the classic cable tie solution. Cables do not always run in a straight line. The material used in SFX markers addresses this fact with highly flexible polyurethane. The marker follows each curve of the cable and latches on with ease.

**General ordering data**

Version	SlimFix, Conductor and cable markers, 7 - 40 mm, 26 x 15 mm, yellow
Order No.	<a href="#">2712100000</a>
Type	SFX 9/24 MM BP GE
GTIN (EAN)	4050118749830
Qty.	9,000 pc(s).
compatible printer	<a href="#">2599430000</a> <a href="#">2599440000</a>

## SFX 9/24 MM BP GE

Weidmüller Interface GmbH &amp; Co. KG

Klingenbergstraße 26

D-32758 Detmold

Germany

www.weidmueller.com

## Technical data

## Dimensions and weights

Depth	0.6 mm	Depth (inches)	0.024 inch
Height	26 mm	Height (inches)	1.024 inch
Width	15 mm	Width (inches)	0.591 inch
Net weight	0.237 g		

## Temperatures

Operating temperature range	-40...90 °C
-----------------------------	-------------

## General data

Colour	yellow	Halogen	No
Material	Polyurethane	Number per roll	1,000
Operating temperature range	-40...90 °C	Operating temperature range, max.	90 °C
Operating temperature range, min.	-40 °C	Size of labelling field	23.5 x 9 mm
UL 94 flammability rating	HB	Version	halogen-free
Width	15 mm		

## Conductor and cable markers

Cable tie passage	Flat	Conductor O.D.	7 - 40 mm
Conductor O.D., max.	40 mm	Conductor O.D., min.	7 mm
Conductor cross-section, max.	500 mm <sup>2</sup>	Conductor cross-section, min.	16 mm <sup>2</sup>
Cross-section for connected wire	16 - 500 mm <sup>2</sup>	Halogen	No
Suitable cable tie	Plastic	Text field height	23.5 mm
Text field width	9 mm		

## Classifications

ETIM 6.0	EC001530	ETIM 7.0	EC001530
ETIM 8.0	EC001530	ETIM 9.0	EC001530
ECLASS 9.0	27-40-04-01	ECLASS 9.1	27-40-04-01
ECLASS 10.0	27-40-04-01	ECLASS 11.0	27-28-11-02
ECLASS 12.0	27-28-11-02	ECLASS 13.0	27-28-11-02

## Approvals

ROHS	Conform
------	---------

## Downloads

Engineering Data	<a href="#">CAD data – STEP</a>
Catalogues	<a href="#">Catalogues in PDF-format</a>

### SFX 9/24 MM BP GE

**Weidmüller Interface GmbH & Co. KG**

Klingenbergstraße 26

D-32758 Detmold

Germany

[www.weidmueller.com](http://www.weidmueller.com)

## Drawings



**SFX 9/24 MM BP GE****Weidmüller Interface GmbH & Co. KG**

Klingenbergstraße 26

D-32758 Detmold

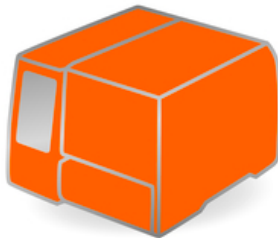
Germany

[www.weidmueller.com](http://www.weidmueller.com)**Accessories****Ink ribbons**

These printers produce excellent printing results thanks to the thermal transfer technique. Different materials and the user-friendly printing system under Windows optimise marking efforts.

**General ordering data**

Type	RIBBON MM 76/360 SW	Version
Order No.	<a href="#">2005080000</a>	Ink ribbon
GTIN (EAN)	4050118389951	
Qty.	1 pc(s).	
Type	RIBBON MM 110/360 SW	Version
Order No.	<a href="#">2005070000</a>	Ink ribbon
GTIN (EAN)	4050118390049	
Qty.	1 pc(s).	

**THM MULTIMARK**

These printers produce excellent printing results thanks to the thermal transfer technique. Different materials and the user-friendly printing system under Windows optimise marking efforts.

**General ordering data**

Type	THM MMP EXT.RH
Order No.	<a href="#">1302920000</a>
GTIN (EAN)	4050118102307
Qty.	1 pc(s).