

**CP TTB****Weidmüller Interface GmbH & Co. KG**

Klingenbergstraße 26

D-32758 Detmold

Germany

[www.weidmueller.com](http://www.weidmueller.com)**Current and voltage transformer wiring**

Our test disconnect terminal blocks featuring spring and screw connection technology allow you to create all the important converter circuits for measuring current, voltage and power in a safe and sophisticated way.

**General ordering data**

Version	Cover hood (terminal)
Order No.	<a href="#">2710140000</a>
Type	CP TTB
GTIN (EAN)	4064675014171
Qty.	10 pc(s).

**CP TTB****Weidmüller Interface GmbH & Co. KG**

Klingenbergstraße 26

D-32758 Detmold

Germany

[www.weidmueller.com](http://www.weidmueller.com)**Technical data****Dimensions and weights**

Depth	59 mm	Depth (inches)	2.323 inch
Height	148.5 mm	Height (inches)	5.846 inch
Width	1,000 mm	Width (inches)	39.37 inch
Net weight	27 g		

**Temperatures**

Storage temperature	-25 °C...55 °C
---------------------	----------------

**Material data**

Colour	Transparent	UL 94 flammability rating	V-2
--------	-------------	---------------------------	-----

**Classifications**

ETIM 6.0	EC002848	ETIM 7.0	EC002848
ETIM 8.0	EC002848	ETIM 9.0	EC002848
ECLASS 9.0	27-14-11-92	ECLASS 9.1	27-14-11-92
ECLASS 10.0	27-14-11-92	ECLASS 11.0	27-14-11-92
ECLASS 12.0	27-14-11-92	ECLASS 13.0	27-25-03-90

**Downloads**

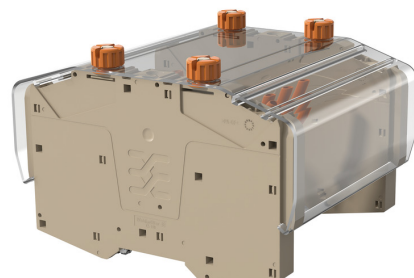
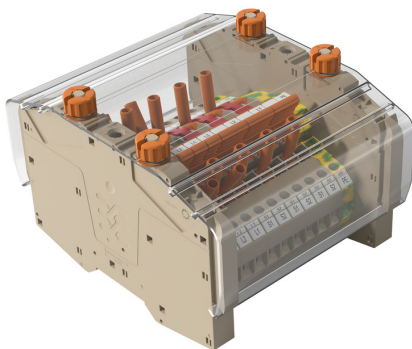
Engineering Data	<a href="#">CAD data – STEP</a>
Catalogues	<a href="#">Catalogues in PDF-format</a>

## CP TTB

**Weidmüller Interface GmbH & Co. KG**  
Klingenbergstraße 26  
D-32758 Detmold  
Germany

[www.weidmueller.com](http://www.weidmueller.com)

## Drawings



**CP TTB****Weidmüller Interface GmbH & Co. KG**

Klingenbergstraße 26

D-32758 Detmold

Germany

[www.weidmueller.com](http://www.weidmueller.com)**Accessories****EL CC-RAIL****Customised identification: EL**

The endless variations of MultiMark markers make them an economical alternative to conventional tag rails or special labels. For any given width, the height can be precisely configured by the software to match the respective markers perfectly. A blade is used to cut the labels individually to the specified size. Perfect for producing large labels for function blocks or complete terminal blocks.

**Your benefits with MultiMark**

- "Different materials for various requirements"
- Can be used with equipment from many manufacturers
- Device markers with a familiar design

**General ordering data**

Type	EL CC-RAIL MM GE 30M	Version
Order No.	<a href="#">2619980000</a>	THM, Device markers, 15 x , yellow
GTIN (EAN)	4050118626100	
Qty.	1 pc(s).	

### CP TTB

**Weidmüller Interface GmbH & Co. KG**

Klingenbergstraße 26

D-32758 Detmold

Germany

[www.weidmueller.com](http://www.weidmueller.com)

## Drawings

