

D-SUB M6.3 T15VB 3.2B4 TY BK**Weidmüller Interface GmbH & Co. KG**

Klingenbergstraße 26

D-32758 Detmold

Germany

www.weidmueller.com**The product range encompasses the following designs:**

- 90°, lying (horizontal) and 180°, standing (vertical)
- Flange design as drilled hole, UNC 4-40 threaded nut and UNC 4-40 threaded bolt
- Stamped contacts (Rated current: 3 A)
- THT soldering process
- Wide range of different design types, also with snap-on clip
- Packed in tray (TY)
- Extended temperature range of -55 °C to +85 °C for maximum performance
- Design in accordance with IEC 60807-3 (IEC 807-3) and DIN 41652

General ordering data

| | |
|------------|---|
| Version | OMNIMATE Data - D-SUB connector, male header, Thread-bolt UNC 4-40, THT solder connection, Pitch in mm (P): 2.77 mm, Number of poles: 15, ≥ 50 µ" Ni / 100 µ" Sn , 500, PBT GF, black, Tray |
| Order No. | 2707240000 |
| Type | D-SUB M6.3 T15VB 3.2B4 TY BK |
| GTIN (EAN) | 4050118810073 |
| Qty. | 70 pc(s). |
| Packaging | Tray |

D-SUB M6.3 T15VB 3.2B4 TY BK**Weidmüller Interface GmbH & Co. KG**

Klingenbergstraße 26

D-32758 Detmold

Germany

www.weidmueller.com

Technical data**Dimensions and weights**

| | | | |
|------------|----------|-----------------|------------|
| Depth | 12.55 mm | Depth (inches) | 0.494 inch |
| Height | 12.96 mm | Height (inches) | 0.51 inch |
| Width | 39.2 mm | Width (inches) | 1.543 inch |
| Net weight | 7.857 g | | |

System specifications

| | | | |
|-----------------------|----------------------------------|----------------------------------|----------------------|
| Mounting onto the PCB | THT solder connection | Number of poles | 15 |
| Outgoing elbow | 180° | Pitch in inches (P) | 0.109 " |
| Pitch in mm (P) | 2.77 mm | Plugging cycles | 500 |
| Product family | OMNIMATE Data - D-SUB connector | Protection degree | IP10 |
| Shield surface | tinned | Shielding | 360° shield contact |
| Shielding material | Steel | Side termination, characteristic | Thread-bolt UNC 4-40 |
| Solder pin dimensions | Octagonal | Solder pin length (l) | 3.5 mm |
| Soldering process | Manual soldering, Wave soldering | Tolerance of solder pin position | ± 0.1 mm |
| Type of connection | Solder connection | | |

Electrical properties

| | | | |
|--|-----------|---------------------|-----------|
| Dielectric strength, contact / contact | 1000 V AC | Insulation strength | ≥ 1000 MΩ |
| Rated current | 3 A | Rated voltage | 250 V |

Material data

| | | | |
|--------------------------------------|------------------------|---------------------------------|-----------------------|
| Insulating material | PBT GF | Colour | black |
| Colour chart (similar) | RAL 9011 | Insulation strength | ≥ 1000 MΩ |
| UL 94 flammability rating | V-0 | Contact base material | Cu-alloy |
| Contact material | Cu-alloy | Contact surface | Gold over nickel |
| Layer structure of solder connection | ≥ 50 μ" Ni / 100 μ" Sn | Layer structure of plug contact | ≥ 50 μ" Ni / 30 μ" Au |
| Operating temperature, min. | -55 °C | Operating temperature, max. | 105 °C |

Packing

| | | | |
|-----------|--------|------------|--------|
| Packaging | Tray | VPE length | 305 mm |
| VPE width | 202 mm | VPE height | 25 mm |

Classifications

| | | | |
|-------------|-------------|-------------|-------------|
| ETIM 6.0 | EC002637 | ETIM 7.0 | EC002637 |
| ETIM 8.0 | EC002637 | ETIM 9.0 | EC002637 |
| ECLASS 9.0 | 27-44-04-02 | ECLASS 9.1 | 27-44-04-02 |
| ECLASS 10.0 | 27-44-04-02 | ECLASS 11.0 | 27-46-02-01 |
| ECLASS 12.0 | 27-46-02-01 | ECLASS 13.0 | 27-46-02-01 |

D-SUB M6.3 T15VB 3.2B4 TY BK**Weidmüller Interface GmbH & Co. KG**

Klingenbergstraße 26

D-32758 Detmold

Germany

www.weidmueller.com**Technical data****Approvals**

Approvals



ROHS Conform

UL File Number Search UL Website

Certificate No. (UR) E92202

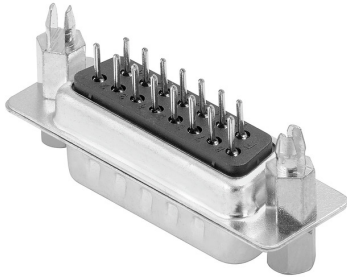
DownloadsEngineering Data [CAD data – STEP](#)Catalogues [Catalogues in PDF-format](#)

D-SUB M6.3 T15VB 3.2B4 TY BK

Weidmüller Interface GmbH & Co. KG
Klingenbergstraße 26
D-32758 Detmold
Germany

www.weidmueller.com

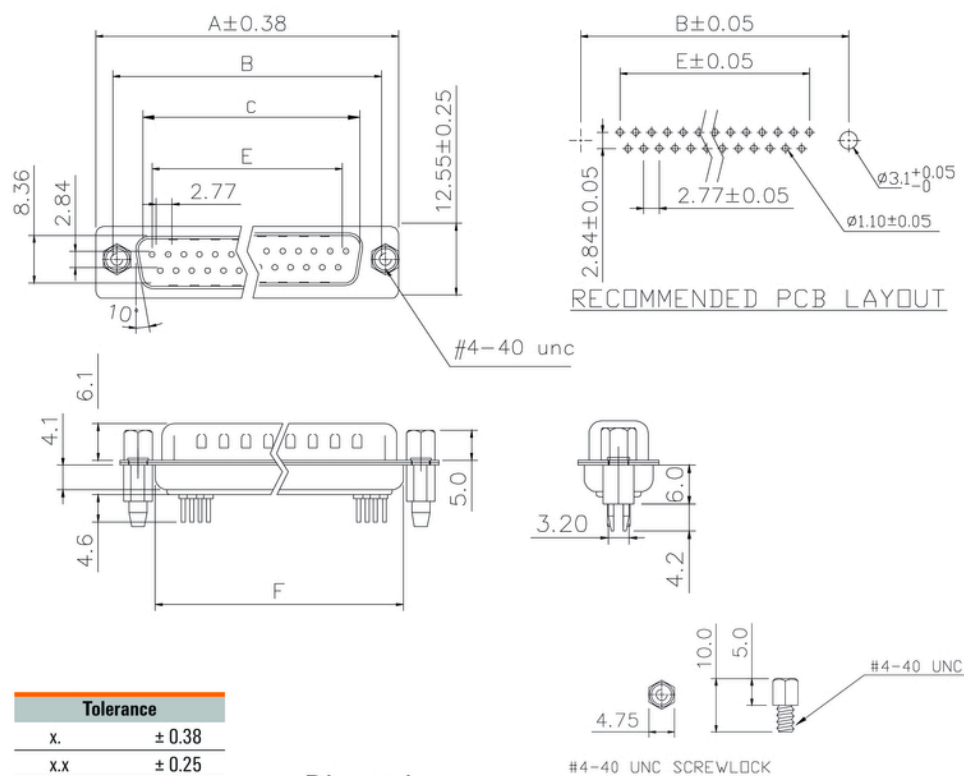
Drawings



D-SUB M6.3 T15VB 3.2B4 TY BK

Weidmüller Interface GmbH & Co. KG
 Klingenbergstraße 26
 D-32758 Detmold
 Germany

www.weidmueller.com

Drawings

| Tolerance | |
|-----------|--------|
| x. | ± 0.38 |
| x.x | ± 0.25 |
| x.xx | ± 0.13 |
| DIM | TOL |
| x. | ± 3° |
| x.x | ± 1° |
| Angle | TOL |

Dimensions

| No. of poles | A | B | C | E | E |
|--------------|-------|-------|-------|-------|-------|
| 9 | 30.81 | 24.99 | 16.92 | 11.08 | 19.20 |
| 15 | 39.20 | 33.30 | 25.25 | 19.39 | 27.70 |
| 25 | 53.05 | 47.04 | 38.96 | 33.24 | 41.10 |

Recommended wave soldering profiles

Weidmüller Interface GmbH & Co. KG
Klingenbergstraße 16
D-32758 Detmold
Germany
Fon: +49 5231 14-0
Fax: +49 5231 14-292083
www.weidmueller.com

Single Wave:



Double Wave:



Wave soldering profiles

Wired connection elements should be processed in accordance with the DIN EN 61760-1 standard. We have included two recommendations for practical wave soldering profiles, with which Weidmüller PCB terminals and connectors are qualified.

When choosing a suitable profile for your application, the following factors also need to be considered:

- PCB thickness
- Proportion of Cu in the layers
- Single/double-sided assembly
- Product range
- Heating and cooling rates

The single and double wave profiles each indicate the recommended operating range, including the maximum soldering temperature of 260 °C. In practice, the maximum soldering temperature is quite often well below the above maximum profile.

We reserve the right to make technical changes.