

IE-C5DB4BB0050MCAMCA-X**Weidmüller Interface GmbH & Co. KG**

Klingenbergstraße 26

D-32758 Detmold

Germany

www.weidmueller.com

Assembled IE cables, railway cable, Cat.5, blue, M12

General ordering data

Version	System cable, M12 D-code – IP 67 angled pin, M12 D-code – IP 67 angled pin, Cat.5 (ISO/IEC 11801) / Cat.5e (TIA T568-B), Polyolefine, 5 m
Order No.	2672340050
Type	IE-C5DB4BB0050MCAMCA-X
GTIN (EAN)	4064675262220
Qty.	1 pc(s).

Creation date May 1, 2024 10:56:15 PM CEST

Catalogue status 20.04.2024 / We reserve the right to make technical changes.

IE-C5DB4BB0050MCAMCA-X

Weidmüller Interface GmbH & Co. KG

Klingenbergstraße 26

D-32758 Detmold

Germany

www.weidmueller.com

Technical data

Dimensions and weights

Length	5 m	Length (inches)	196.85 inch
Net weight	200 g		

Temperatures

Operating temperature	-40 °C...90 °C
-----------------------	----------------

Cable specific standards

Corrosiveness of fumes	EN 50267-2-2	Fire safety for railway vehicles	NFPA 130, DIN EN 45545-2
Flames propagate vertically on bundled cables	EN 60332-3-25	Hydrogen halide content	According to EN-50267-2-1, According to IEC 60754-1
Impervious to smoke	EN 61034-2	Poisonous gases	EN 50305

Electrical properties

Rated voltage	125 V
---------------	-------

General standards

Connector standard	IEC 61076-2-101
--------------------	-----------------

Standards

Connector standard	IEC 61076-2-101	Corrosiveness of fumes	EN 50267-2-2
Fire safety for railway vehicles	NFPA 130, DIN EN 45545-2	Flames propagate vertically on bundled cables	EN 60332-3-25
Hydrogen halide content	According to EN-50267-2-1, According to IEC 60754-1	Impervious to smoke	EN 61034-2
Poisonous gases	EN 50305		

Cable structure

Colour coding	blue, yellow, white, orange	Copper diameter	0.254 mm
Cross-section	4*AWG 22/7 - 0.32 mm ²	Insulation	PE
Insulation cross-section	1.95 mm	Material sheath	Polyolefine
Number of wires	4	Sheath diameter, max.	6.8 mm
Sheath diameter, min.	6.4 mm	Sheathing colour	blue, SF/UTP
Sheathing material thickness	1 mm	Shielding	SF/UTP
Wire connection cross section AWG, max.	AWG 22	Wire core insulation thickness	1.4 mm
Wire material	tinned copper	Wire pair shielding	Plastic foil

Electrical properties of cable

Category	Cat.5 (ISO/IEC 11801) / Cat.5e (TIA T568-B)	Coupling attenuation up to 1000 MHz	90 dB
Coupling resistance at 10 MHz / m	8 mΩ	Shield attenuation up to 1000 MHz	60 dB
Test voltage: wire-wire-shield	1000 V _{eff} , 50 Hz, 1 min		

IE-C5DB4BB0050MCAMCA-X**Weidmüller Interface GmbH & Co. KG**

Klingenbergstraße 26

D-32758 Detmold

Germany

www.weidmueller.com**Technical data****Mechanical and material properties of cable**

Corrosiveness of fumes	EN 50267-2-2	Halogen	halogen-free, according to IEC 60754-2, No
Impervious to smoke	EN 61034-2	Min. bending radius, once only	5 x cable diameter
Min. bending radius, repetitive	6 *diameter	Resistance to oils	in accordance with IEC 60811:404

Plug, left

Plug left	M12, D-coded, IP67, male contact, angled 90°, plug, Plastic, shielded
-----------	---

Plug, right

Plug right	M12, D-coded, IP67, male contact, angled 90°, plug, Plastic, shielded
------------	---

Classifications

ETIM 6.0	EC002599	ETIM 7.0	EC002599
ETIM 8.0	EC002599	ETIM 9.0	EC002599
ECLASS 9.0	27-06-03-08	ECLASS 9.1	27-06-03-08
ECLASS 10.0	27-06-03-08	ECLASS 11.0	27-06-03-08
ECLASS 12.0	27-06-03-08	ECLASS 13.0	27-06-03-08

Environmental Product Compliance

REACH SVHC	Lead 7439-92-1
SCIP	67cf1078-beca-4687-860b-dc475a6ec24a

Approvals

ROHS	Conform
------	---------

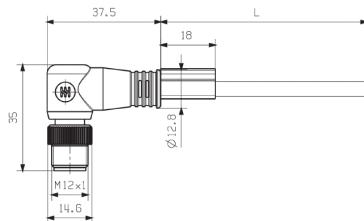
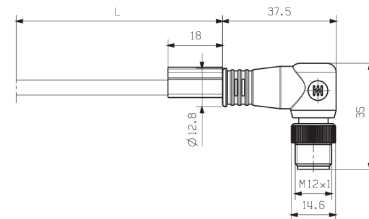
Downloads

Catalogues	Catalogues in PDF-format
------------	--

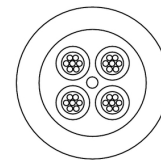
IE-C5DB4BB0050MCAMCA-X

Weidmüller Interface GmbH & Co. KG
Klingenbergstraße 26
D-32758 Detmold
Germany

www.weidmueller.com

Drawings**Dimensioned drawing****Dimensioned drawing****Wiring diagram**

M12		M12
1	yellow	1
2	white	2
3	orange	3
4	blue	4

Detailed drawing

IE-C5DB4BB0050MCAMCA-X

Weidmüller Interface GmbH & Co. KG

Klingenbergstraße 26

D-32758 Detmold

Germany

www.weidmueller.com

Accessories

Screwty® cable gland tool



The ideal tool for any application

Screwty® is the ideal, all-purpose tool for tightening all common sensor and actuator cables. Even difficult-to-reach round plugs are accessible using the Screwty®. A simple turning movement tightens and loosens the connectors without the need for excessive force. The Screwty® is a unique and global solution since it fits with most cables and plugs from other vendors (over 90 %). The Screwty® consists of a handle with a conventional 1/4" adapter. Thus it can be used for all sizes: for M12 and M8 round plug-in connectors, and for M12F and M8F customisable plugs and sockets, as well as for all M23 plugs and sockets.

General ordering data

Type	SCREWTY SET	Version	Packaging
Order No.	1910000000	Cable gland tool for M8, M12 lines and connectors	Cardboard box
GTIN (EAN)	4032248436842		
Qty.	1 pc(s).		
Type	SCREWTY- M12	Version	Packaging
Order No.	1900000000	Cable gland tool for moulded M12 lines	Cardboard box
GTIN (EAN)	4032248375868		
Qty.	1 pc(s).		

Screwty® cable gland tool with torque function



The ideal tool for any application

Screwty® is the ideal, all-purpose tool for tightening all common sensor and actuator cables. Even difficult-to-reach round plugs are accessible using the Screwty®. A simple turning movement tightens and loosens the connectors without the need for excessive force. The Screwty® is a unique and global solution since it fits with most cables and plugs from other vendors (over 90 %). The Screwty® consists of a handle with a conventional 1/4" adapter. Thus it can be used for all sizes: for M12 and M8 round plug-in connectors, and for M12F and M8F customisable plugs and sockets, as well as for all M23 plugs and sockets.

General ordering data

Type	SCREWTY-M12-DM	Version	Packaging
Order No.	1900001000	Cable gland tool for moulded M12 lines	Cardboard box
GTIN (EAN)	4032248436408		
Qty.	1 pc(s).		
Type	SCREWTY SET -DM	Version	Packaging
Order No.	1920000000	Cable gland tool for M8, M12 lines and connectors	Cardboard box
GTIN (EAN)	4032248436859		
Qty.	1 pc(s).		