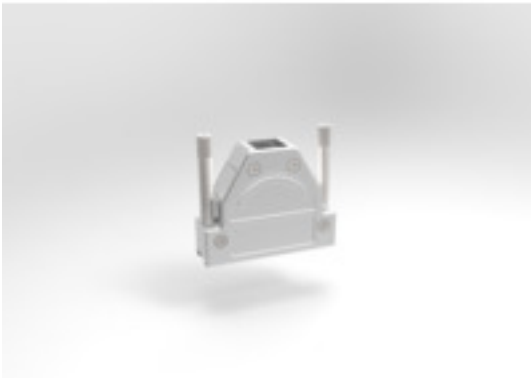


**HDC DSUB 25 TO UNC****Weidmüller Interface GmbH & Co. KG**

Klingenbergstraße 26

D-32758 Detmold

Germany

[www.weidmueller.com](http://www.weidmueller.com)

Weidmüller's SUB-D connector range includes Sub-D inserts and contacts for applications with a wide range of requirements, metal hoods, which are particularly suitable for robust applications. Accessories tailored to the application complete the product range. The SUB-D connector has been the proven interface for bus signals in industrial applications for many years. SUB-D connectors are manufactured in countless numbers of poles, variants, housings, contacts and designs. The long market presence and continuous development have made the D-Sub an all-round interface for demanding industrial applications.

**General ordering data**

Order No.	<a href="#">2664700000</a>
Type	HDC DSUB 25 TO UNC
GTIN (EAN)	4050118786668
Qty.	10 pc(s).

## HDC DSUB 25 TO UNC

Weidmüller Interface GmbH &amp; Co. KG

Klingenbergstraße 26

D-32758 Detmold

Germany

www.weidmueller.com

## Technical data

## Dimensions and weights

Net weight	63.5 g
------------	--------

## Temperatures

Ambient temperature	-55° C ... 90° C (unter -40° C keine Schlagbelastung)
---------------------	---

## Design

Product family	RockStar® HDC SUBD			
Product type	Shell housing			
Number of cable entries	3			
Blade size, crosshead	PZ 1			
AF size	2.5 mm			
Tightening torque	Torque type	Cover screw		
	Usage information	Tightening torque	nominal	0.2 Nm
	Torque type	Locking screw		
	Usage information	Tightening torque	nominal	0.3 Nm
Earthing	Earth terminal			

## General descriptions

Outgoing elbow	180°	Size of cable entries	max. Ø 14.0
Type of locking	Allen hex screw with spring washer, Thread 4-40 UNC	Size	SUBD 3
Protection degree	IP20		

## Material

Material	Zinc
----------	------

## Classifications

ETIM 6.0	EC001132	ETIM 7.0	EC001132
ETIM 8.0	EC001132	ETIM 9.0	EC001132
ECLASS 9.0	27-44-03-02	ECLASS 9.1	27-44-03-90
ECLASS 10.0	27-44-03-02	ECLASS 11.0	27-44-03-02
ECLASS 12.0	27-44-03-02	ECLASS 13.0	27-44-03-02

## Approvals

ROHS	Conform
------	---------

## Downloads

Engineering Data	<a href="#">CAD data – STEP</a>
Catalogues	<a href="#">Catalogues in PDF-format</a>