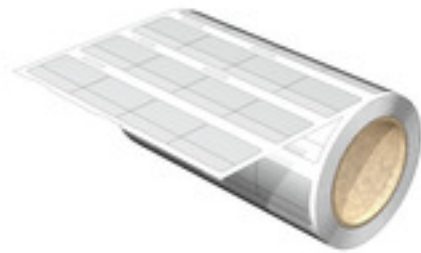


**THM WO VIN 25.4/19 SP WS****Weidmüller Interface GmbH & Co. KG**

Klingenbergstraße 26

D-32758 Detmold

Germany

[www.weidmueller.com](http://www.weidmueller.com)

THM WriteOn cable markers on reels are used for labelling conductors and cables with an outside diameter of up to 36 mm. The transparent adhesive strip fixes and protects the printing on the marker surface.

- Protection of the marking against dirt and abrasion by wrapping it with the transparent adhesive strip
- Simple and quick printing with the high-quality thermal transfer printers

**General ordering data**

Version	THM, Conductor and cable markers, 2 - 4 mm, 25.4 x 19 mm, white
Order No.	<a href="#">2657130000</a>
Type	THM WO VIN 25.4/19 SP WS
GTIN (EAN)	4050118675269
Qty.	400 pc(s).
compatible printer	<a href="#">2599430000</a> <a href="#">2599440000</a>

## THM WO VIN 25.4/19 SP WS

Weidmüller Interface GmbH &amp; Co. KG

Klingenbergstraße 26

D-32758 Detmold

Germany

www.weidmueller.com

## Technical data

## Dimensions and weights

Depth	0.07 mm	Depth (inches)	0.003 inch
Height	25.4 mm	Height (inches)	1 inch
Width	19 mm	Width (inches)	0.748 inch
Net weight	0.203 g		

## Temperatures

Operating temperature range	-40...80 °C
-----------------------------	-------------

## General data

Adhesive	Polyacrylate adhesive	
Approval acc. to UL 969	No	
Colour	white	
Halogen	Yes	
Material	Vinyl film	
Number of markers per combination	1 Label reel = Conductor and cable markers	
Number of markers per packaging unit	Form of supply	Label reel
Number per roll	400	
Operating temperature range	-40...80 °C	
Operating temperature range, max.	80 °C	
Operating temperature range, min.	-40 °C	
Printing method	Thermal transfer	
Type of printing	neutral	
UL 94 flammability rating	V-0	
Width	19 mm	

## Conductor and cable markers

Conductor O.D.	2 - 4 mm	Conductor O.D., max.	4 mm
Conductor O.D., min.	2 mm	Halogen	Yes
Wire connection cross section AWG, max.	AWG 14	Wire connection cross section AWG, min.	AWG 18

## Classifications

ETIM 6.0	EC001530	ETIM 7.0	EC001530
ETIM 8.0	EC001530	ETIM 9.0	EC001530
ECLASS 9.0	27-40-04-01	ECLASS 9.1	27-40-04-01
ECLASS 10.0	27-40-04-01	ECLASS 11.0	27-28-11-02
ECLASS 12.0	27-28-11-02	ECLASS 13.0	27-28-11-02

## Approvals

ROHS	Conform
------	---------

## Downloads

Catalogues	<a href="#">Catalogues in PDF-format</a>
------------	--

