

HDC MHE 4X MP**Weidmüller Interface GmbH & Co. KG**

Klingenbergstraße 26

D-32758 Detmold

Germany

www.weidmueller.com**Flexible**

The four module sizes make for individual plug solutions that save a huge amount of space. The smaller pitch translates into an optimised design too.

General ordering data

| | |
|------------|----------------------------|
| Version | Signal module |
| Order No. | 2636070000 |
| Type | HDC MHE 4X MP |
| GTIN (EAN) | 4050118692815 |
| Qty. | 1 pc(s). |

HDC MHE 4X MP

Weidmüller Interface GmbH & Co. KG

Klingenbergstraße 26

D-32758 Detmold

Germany

www.weidmueller.com

Technical data

Dimensions and weights

| | | | |
|------------|----------|-----------------|------------|
| Depth | 70.5 mm | Depth (inches) | 2.776 inch |
| Height | 63 mm | Height (inches) | 2.48 inch |
| Width | 7.15 mm | Width (inches) | 0.281 inch |
| Net weight | 24.412 g | | |

Temperatures

| | |
|-------------------|-------------------|
| Limit temperature | -40 °C ... 125 °C |
|-------------------|-------------------|

General data

| | | | |
|------------------------------|--------------------|--------------------------------------|---------------------------------------|
| Insulation strength | 10 ¹² Ω | Material | Polycarbonate, glass fibre reinforced |
| Number of poles | 4 | Number of potentials | 4 |
| Plugging cycles | ≥ 500 | Pollution severity | 3 |
| Rated current (DIN EN 61984) | 16 A | Rated impulse voltage (DIN EN 61984) | 4 kV |
| Rated voltage (DIN EN 61984) | 250 V | Rated voltage according to UL/CSA | 600 V |
| Required plug-in slots | 0.5 | Series | ModuPlug |
| Surge voltage category | III | Type | Pin |
| UL 94 flammability rating | V-0 | | |

PE connection data

| | |
|--------------------|-----------------------------------|
| Connection type PE | Screw connection via module frame |
|--------------------|-----------------------------------|

Version

| | | | |
|---|---------------------|---|-----------------------|
| Conductor cross-section, max. | 2.5 mm ² | Conductor cross-section, min. | 0.5 mm ² |
| Stripping length, rated connection | 10 mm | Type of connection | PUSH IN with actuator |
| Wire connection cross section AWG, max. | AWG 14 | Wire connection cross section AWG, min. | AWG 20 |

Classifications

| | | | |
|-------------|-------------|-------------|-------------|
| ETIM 6.0 | EC002312 | ETIM 7.0 | EC002312 |
| ETIM 8.0 | EC002312 | ETIM 9.0 | EC002312 |
| ECLASS 9.0 | 27-44-02-92 | ECLASS 9.1 | 27-44-02-18 |
| ECLASS 10.0 | 27-44-02-92 | ECLASS 11.0 | 27-44-02-92 |
| ECLASS 12.0 | 27-44-02-92 | ECLASS 13.0 | 27-44-02-92 |

Environmental Product Compliance

| | |
|------------|---|
| REACH SVHC | Lead 7439-92-1 Potassium perfluorobutane sulfonate 29420-49-3 |
| SCIP | 9ed66ce7-2fe8-4987-bb46-06cab3f02292 |

Important note

| | |
|---------------------|--|
| Product information | Only to be used in combination with mounting brackets (2716790000 / 2716800000) of RockStar wall mounting housings IP66. |
|---------------------|--|

HDC MHE 4X MP**Weidmüller Interface GmbH & Co. KG**

Klingenbergstraße 26

D-32758 Detmold

Germany

www.weidmueller.com**Technical data****Approvals**

Approvals



UL File Number Search

UL Website

Certificate No. (cURus)

E92202

DownloadsApproval/Certificate/Document of Con-
formity[Manufacturer's declaration](#)

Engineering Data

[CAD data – STEP](#)

Product Change Notification

[Technical change - EN](#)[Technical change - DE](#)

Catalogues

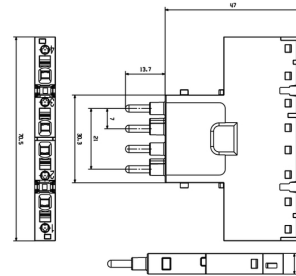
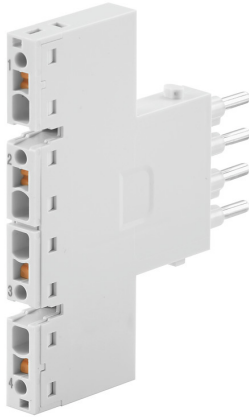
[Catalogues in PDF-format](#)

HDC MHE 4X MP

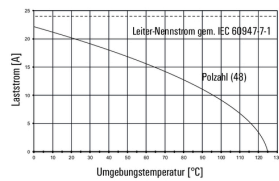
Weidmüller Interface GmbH & Co. KG
 Klingenbergstraße 26
 D-32758 Detmold
 Germany

www.weidmueller.com

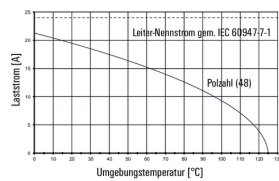
Drawings



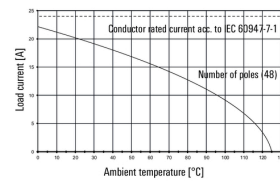
HDC MHE 4X MQT mit HDC MHE 4FQT / H07V-K2,5



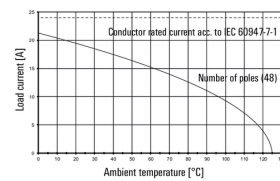
HDC MHE 4X FQT mit HDC MHE 4MQT / H07V-K2,5



HDC MHE 4X MQT with HDC MHE 4FQT / H07V-K2.5



HDC MHE 4X FQT with HDC MHE 4MQT / H07V-K2.5



HDC MHE 4X MP

Weidmüller Interface GmbH & Co. KG

Klingenbergstraße 26

D-32758 Detmold

Germany

www.weidmueller.com

Accessories

Cross-Connector Bridge



In addition to heavy-duty connectors, RockStar® includes the appropriate accessories for effective, functional and safe system cabling; e.g. coding systems, shield clamps, cover plates and replacement seals

General ordering data

| | | |
|------------|----------------------------|---|
| Type | HDC MXCC11 4X | Version |
| Order No. | 2709810000 | Cross-connector bridge, Heavy duty connector assemblies |
| GTIN (EAN) | 4050118805758 | |
| Qty. | 20 pc(s). | |
| Type | HDC MXCC2 4X | Version |
| Order No. | 2709710000 | Cross-connector bridge, Heavy duty connector assemblies |
| GTIN (EAN) | 4050118805659 | |
| Qty. | 50 pc(s). | |
| Type | HDC MXCC8 4X | Version |
| Order No. | 2709780000 | Cross-connector bridge, Heavy duty connector assemblies |
| GTIN (EAN) | 4050118805727 | |
| Qty. | 20 pc(s). | |
| Type | HDC MXCC9 4X | Version |
| Order No. | 2709790000 | Cross-connector bridge, Heavy duty connector assemblies |
| GTIN (EAN) | 4050118805734 | |
| Qty. | 20 pc(s). | |
| Type | HDC MXCC12 4X | Version |
| Order No. | 2709820000 | Cross-connector bridge, Heavy duty connector assemblies |
| GTIN (EAN) | 4050118805765 | |
| Qty. | 20 pc(s). | |
| Type | HDC MXCC5 4X | Version |
| Order No. | 2709740000 | Cross-connector bridge, Heavy duty connector assemblies |
| GTIN (EAN) | 4050118805680 | |
| Qty. | 50 pc(s). | |
| Type | HDC MXCC3 4X | Version |
| Order No. | 2709720000 | Cross-connector bridge, Heavy duty connector assemblies |
| GTIN (EAN) | 4050118805666 | |
| Qty. | 50 pc(s). | |
| Type | HDC MXCC7 4X | Version |
| Order No. | 2709770000 | Cross-connector bridge, Heavy duty connector assemblies |
| GTIN (EAN) | 4050118805710 | |
| Qty. | 100 pc(s). | |
| Type | HDC MXCC4 4X | Version |
| Order No. | 2709730000 | Cross-connector bridge, Heavy duty connector assemblies |
| GTIN (EAN) | 4050118805673 | |
| Qty. | 50 pc(s). | |
| Type | HDC MXCC6 4X | Version |
| Order No. | 2709750000 | Cross-connector bridge, Heavy duty connector assemblies |
| GTIN (EAN) | 4050118805703 | |
| Qty. | 50 pc(s). | |

Creation date May 21, 2024 12:38:07 AM CEST

Catalogue status 04.05.2024 / We reserve the right to make technical changes.

HDC MHE 4X MP**Weidmüller Interface GmbH & Co. KG**

Klingenbergstraße 26

D-32758 Detmold

Germany

www.weidmueller.com**Accessories**

| | | |
|------------|----------------------------|---|
| Type | HDC MXCC10 4X | Version |
| Order No. | 2709800000 | Cross-connector bridge, Heavy duty connector assemblies |
| GTIN (EAN) | 4050118805741 | |
| Qty. | 20 pc(s). | |

Marker

In addition to heavy-duty connectors, RockStar® includes the appropriate accessories for effective, functional and safe system cabling; e.g. coding systems, shield clamps, cover plates and replacement seals

General ordering data

| | | |
|------------|----------------------------|---|
| Type | HDC MMARK 4 | Version |
| Order No. | 2710590000 | Marking tags, Heavy duty connector assemblies |
| GTIN (EAN) | 4050118783902 | |
| Qty. | 640 pc(s). | |