

HDC MHE 4 MP**Weidmüller Interface GmbH & Co. KG**

Klingenbergstraße 26

D-32758 Detmold

Germany

www.weidmueller.com**Product image****Flexible**

The four module sizes make for individual plug solutions that save a huge amount of space. The smaller pitch translates into an optimised design too.

General ordering data

Version	Signal module
Order No.	2635980000
Type	HDC MHE 4 MP
GTIN (EAN)	4050118692785
Qty.	1 pc(s).

HDC MHE 4 MP

Weidmüller Interface GmbH & Co. KG

Klingenbergstraße 26

D-32758 Detmold

Germany

www.weidmueller.com

Technical data

Dimensions and weights

Depth	34 mm	Depth (inches)	1.339 inch
Height	59.6 mm	Height (inches)	2.346 inch
Width	7.15 mm	Width (inches)	0.281 inch
Net weight	17 g		

Temperatures

Limit temperature	-40 °C ... 125 °C
-------------------	-------------------

General data

Insulation strength	10 ¹² Ω	Material	Polycarbonate, glass fibre reinforced
Number of poles	4	Number of potentials	4
Plugging cycles	≥ 500	Pollution severity	3
Rated current (DIN EN 61984)	16 A	Rated impulse voltage (DIN EN 61984)	4 kV
Rated voltage (DIN EN 61984)	250 V	Rated voltage according to UL/CSA	600 V
Required plug-in slots	0.5	Series	ModuPlug
Surge voltage category	III	Type	Male
UL 94 flammability rating	V-0		

PE connection data

Connection type PE	Screw connection via module frame
--------------------	-----------------------------------

Version

Conductor cross-section, max.	2.5 mm ²	Conductor cross-section, min.	0.5 mm ²
Stripping length, rated connection	10 mm	Type of connection	PUSH IN with actuator
Wire connection cross section AWG, max.	AWG 14	Wire connection cross section AWG, min.	AWG 20

Classifications

ETIM 6.0	EC002312	ETIM 7.0	EC002312
ETIM 8.0	EC002312	ETIM 9.0	EC002312
ECLASS 9.0	27-44-02-92	ECLASS 9.1	27-44-02-18
ECLASS 10.0	27-44-02-92	ECLASS 11.0	27-44-02-92
ECLASS 12.0	27-44-02-92	ECLASS 13.0	27-44-02-92

Environmental Product Compliance

REACH SVHC	Lead 7439-92-1 Potassium perfluorobutane sulfonate 29420-49-3
SCIP	9ed66ce7-2fe8-4987-bb46-06cab3f02292

Approvals

Approvals



UL File Number Search	UL Website
Certificate No. (cURus)	E92202

Creation date May 3, 2024 5:58:11 AM CEST

Catalogue status 20.04.2024 / We reserve the right to make technical changes.

HDC MHE 4 MP

Weidmüller Interface GmbH & Co. KG

Klingenbergstraße 26

D-32758 Detmold

Germany

www.weidmueller.com

Technical data

Downloads

Approval/Certificate/Document of Con-
formity

[Manufacturer's declaration](#)

Engineering Data

[CAD data – STEP](#)

Product Change Notification

[Technical change - EN](#)

[Technical change - DE](#)

Catalogues

[Catalogues in PDF-format](#)

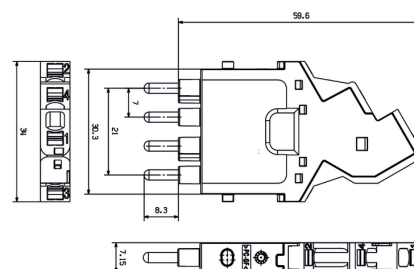
HDC MHE 4 MP

Weidmüller Interface GmbH & Co. KG
Klingenbergstraße 26
D-32758 Detmold
Germany

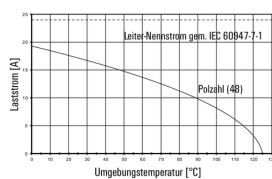
www.weidmueller.com

Drawings

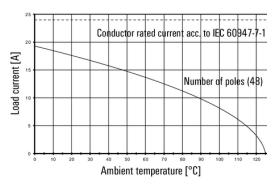
Product image



HDC MHE 4 FQT mit HDC MHE 4 MQT /
H07V-K2,5



HDC MHE 4 FQT mit HDC MHE 4 MQT /
H07V-K2,5



HDC MHE 4 MP**Weidmüller Interface GmbH & Co. KG**

Klingenbergstraße 26

D-32758 Detmold

Germany

www.weidmueller.com**Accessories****With short guiding pin****General ordering data**

Type	HDC MFGS 16B DA	Version
Order No.	2736940000	Frame
GTIN (EAN)	4050118823004	
Qty.	1 pc(s).	
Type	HDC MFGS 16B AD	Version
Order No.	2736930000	Frame
GTIN (EAN)	4050118822298	
Qty.	1 pc(s).	

Standard**General ordering data**

Type	HDC MF 6B BA	Version
Order No.	1428940000	Frame
GTIN (EAN)	4050118233353	
Qty.	1 pc(s).	
Type	HDC MF 6B AB	Version
Order No.	1428920000	Frame
GTIN (EAN)	4050118233414	
Qty.	1 pc(s).	

HDC MHE 4 MP**Weidmüller Interface GmbH & Co. KG**

Klingenbergstraße 26

D-32758 Detmold

Germany

www.weidmueller.com**Accessories****Standard****General ordering data**

Type	HDC MF 16B AD	Version
Order No.	1429010000	Frame
GTIN (EAN)	4050118233315	
Qty.	1 pc(s).	
Type	HDC MF 16B DA	Version
Order No.	1429030000	Frame
GTIN (EAN)	4050118233407	
Qty.	1 pc(s).	

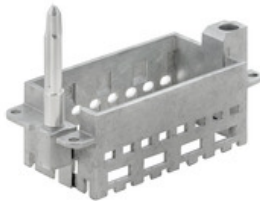
With short guiding pin**General ordering data**

Type	HDC MFGS 6B AB	Version
Order No.	2736890000	Frame
GTIN (EAN)	4050118822250	
Qty.	1 pc(s).	
Type	HDC MFGS 6B BA	Version
Order No.	2736900000	Frame
GTIN (EAN)	4050118822267	
Qty.	1 pc(s).	

HDC MHE 4 MP

Weidmüller Interface GmbH & Co. KG
Klingenbergstraße 26
D-32758 Detmold
Germany

www.weidmueller.com

Accessories**With long guiding pin****General ordering data**

Type	HDC MFL 16B AD	Version
Order No.	2737010000	Frame
GTIN (EAN)	4050118823066	
Qty.	1 pc(s).	
Type	HDC MFL 16B DA	Version
Order No.	2737020000	Frame
GTIN (EAN)	4050118823073	
Qty.	1 pc(s).	

With short guiding pin**General ordering data**

Type	HDC MFGS 24B AF	Version
Order No.	2736950000	Frame
GTIN (EAN)	4050118823011	
Qty.	1 pc(s).	
Type	HDC MFGS 24B FA	Version
Order No.	2736960000	Frame
GTIN (EAN)	4050118823028	
Qty.	1 pc(s).	

HDC MHE 4 MP

Weidmüller Interface GmbH & Co. KG
Klingenbergstraße 26
D-32758 Detmold
Germany

www.weidmueller.com

Accessories**With long guiding pin****General ordering data**

Type	HDC MFGL 10B CA	Version
Order No.	2737000000	Frame
GTIN (EAN)	4050118823059	
Qty.	1 pc(s).	
Type	HDC MFGL 10B AC	Version
Order No.	2736990000	Frame
GTIN (EAN)	4050118823042	
Qty.	1 pc(s).	

With long guiding pin**General ordering data**

Type	HDC MFGL 24B FA	Version
Order No.	2737040000	Frame
GTIN (EAN)	4050118823097	
Qty.	1 pc(s).	
Type	HDC MFGL 24B AF	Version
Order No.	2737030000	Frame
GTIN (EAN)	4050118823080	
Qty.	1 pc(s).	

HDC MHE 4 MP**Weidmüller Interface GmbH & Co. KG**

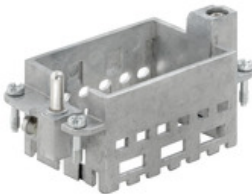
Klingenbergstraße 26

D-32758 Detmold

Germany

www.weidmueller.com**Accessories****With long guiding pin****General ordering data**

Type	HDC MFGL 6B AB	Version
Order No.	2736970000	Frame
GTIN (EAN)	4050118823035	
Qty.	1 pc(s).	
Type	HDC MFGL 6B BA	Version
Order No.	2736980000	Frame
GTIN (EAN)	4050118822908	
Qty.	1 pc(s).	

Standard**General ordering data**

Type	HDC MF 10B AC	Version
Order No.	1428960000	Frame
GTIN (EAN)	4050118233223	
Qty.	1 pc(s).	
Type	HDC MF 10B CA	Version
Order No.	1428980000	Frame
GTIN (EAN)	4050118233278	
Qty.	1 pc(s).	

HDC MHE 4 MP**Weidmüller Interface GmbH & Co. KG**

Klingenbergstraße 26

D-32758 Detmold

Germany

www.weidmueller.com**Accessories****Standard****General ordering data**

Type	HDC MF 24B FA	Version
Order No.	1429070000	Frame
GTIN (EAN)	4050118233520	
Qty.	1 pc(s).	
Type	HDC MF 24B AF	Version
Order No.	1429050000	Frame
GTIN (EAN)	4050118233285	
Qty.	1 pc(s).	

With short guiding pin**General ordering data**

Type	HDC MFGS 10B AC	Version
Order No.	2736910000	Frame
GTIN (EAN)	4050118822274	
Qty.	1 pc(s).	
Type	HDC MFGS 10B CA	Version
Order No.	2736920000	Frame
GTIN (EAN)	4050118822281	
Qty.	1 pc(s).	