

SAI-H4-M12-S**Weidmüller Interface GmbH & Co. KG**

Klingenbergstraße 26

D-32758 Detmold

Germany

www.weidmueller.com**Product image****General ordering data**

Version	Y connector
Order No.	2616350000
Type	SAI-H4-M12-S
GTIN (EAN)	4050118621365
Qty.	1 pc(s).

SAI-H4-M12-S

Weidmüller Interface GmbH & Co. KG

Klingenbergstraße 26

D-32758 Detmold

Germany

www.weidmueller.com

Technical data

Dimensions and weights

Net weight	50 g
------------	------

Connection data

Group outlet - plug-in connector	M12 pin	Single outlet 1 - plug-in connector	M12 socket
Single outlet 2 - plug-in connector	M12 socket	Single outlet 3 - plug-in connector	M12 socket
Tightening torque	M12: 0.8 - 1.2 Nm		

Technical data customisable plug-in connectors

Cable glands	M 12	Coding	S-coded
Contact surface	Gold-plated	Housing main material	TPU
Insulation strength	≥ 100 MΩ	Number of poles	4
Pollution severity	3	Protection degree	IP67
Rated current	12 A	Shield connection	No
Temperature range of housing	-30...+90 °C		

Standards

Connector standard	IEC 61076-2-111
--------------------	-----------------

General data

Cable glands	M 12	Coding	S-coded
Conductor O.D.	-	Contact surface	Gold-plated
Housing main material	TPU	Insulation strength	≥ 100 MΩ
Number of poles	4	Pollution severity	3
Protection degree	IP67	Rated current	12 A
Rated voltage	630 V AC	Shield connection	No
Temperature range of housing	-30...+90 °C		

Classifications

ETIM 6.0	EC002925	ETIM 7.0	EC002925
ETIM 8.0	EC002925	ETIM 9.0	EC002925
ECLASS 9.0	27-44-01-06	ECLASS 9.1	27-44-01-06
ECLASS 10.0	27-44-01-06	ECLASS 11.0	27-44-01-06
ECLASS 12.0	27-44-01-06	ECLASS 13.0	27-44-01-06

Environmental Product Compliance

REACH SVHC	Lead 7439-92-1
SCIP	4060c755-8d0b-4d43-bdb3-4ffabe9d7497

Approvals

Approvals



ROHS	Conform
UL File Number Search	UL Website
Certificate no. (cULus)	E310075

Creation date May 13, 2024 7:28:27 PM CEST

Catalogue status 04.05.2024 / We reserve the right to make technical changes.

SAI-H4-M12-S

Weidmüller Interface GmbH & Co. KG

Klingenbergstraße 26

D-32758 Detmold

Germany

www.weidmueller.com

Technical data

Downloads

Engineering Data

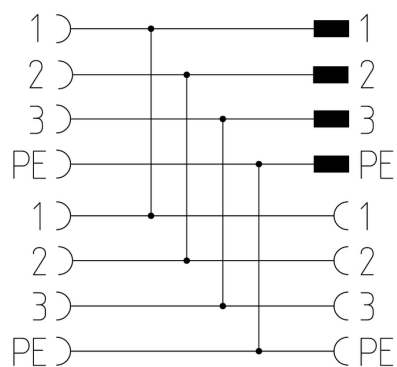
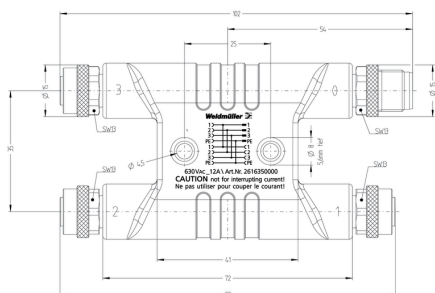
[CAD data – STEP](#)

Catalogues

[Catalogues in PDF-format](#)

Weidmüller Interface GmbH & Co. KG
Klingenbergstraße 26
D-32758 Detmold
Germany

Drawings



Pole scheme

