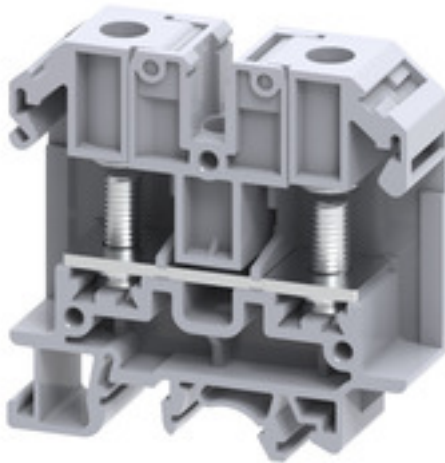


SRL 6**Weidmüller Interface GmbH & Co. KG**

Klingenbergstraße 26

D-32758 Detmold

Germany

www.weidmueller.com**Product image**

Our SRL terminals are best suited for applications where connections are subjected to strong vibrations. The wire to be connected is first crimped onto a ring or fork eyelet and then attached to the busbar of the terminal block. The fixing nuts remain captive in the hinged plastic carrier. For connection, the plastic carrier is lifted, the conductor is inserted with the eyelet, and the plastic carrier returned to its initial position. The fixing nut is tightened with a simple screwdriver to create a secure connection between terminal block and eyelet.

General ordering data

Version	Stud terminal, Threaded stud connection, 35 mm ² , 1000 V, 125 A, Number of connections: 2, M 6, TS 35, TS 32, grey
Order No.	2614960000
Type	SRL 6
GTIN (EAN)	4050118654011
Qty.	50 pc(s).

SRL 6

Weidmüller Interface GmbH & Co. KG

Klingenbergstraße 26

D-32758 Detmold

Germany

www.weidmueller.com

Technical data

Dimensions and weights

Depth	63.1 mm	Depth (inches)	2.484 inch
Height	63.9 mm	Height (inches)	2.516 inch
Width	18 mm	Width (inches)	0.709 inch
Net weight	31 g		

Temperatures

Storage temperature	-25 °C...55 °C	Continuous operating temp., min.	-50 °C
Continuous operating temp., max.	120 °C		

Material data

Material	Polyamide	Colour	grey
----------	-----------	--------	------

System specifications

End cover plate required	Yes	Number of potentials	1
Number of levels	1	Number of clamping points per level	2
Number of potentials per tier	1	PE connection	No
Rail	TS 35, TS 32	N-function	No
PE function	No	PEN function	No

Additional technical data

Open sides	right	Snap-on	Yes
Type of mounting	Snap mounting support rail		

CSA rating data

Certificate number (cCSAus)	70198655	Wire cross section max. (cCSAusX)	8 AWG
Wire cross section min. (cCSAusX)	22 AWG		

Conductors for clamping (rated connection)

2 x cable lugs DIN 46 234	1.5...35 mm ²	2 x cable lugs DIN 46 235	1.5...35 mm ²
Cable lug to DIN 46234	1.5...35 mm ²	Cable lug to DIN 46235	1.5...35 mm ²
Clamping range, bolted connection , max.	35 mm ²	Clamping range, bolted connection , min.	1.5 mm ²
Connection cross-section, stranded, max.	35 mm ²	Connection cross-section, stranded, min.	1.5 mm ²
Connection direction	on side	Number of connections	2
Stud size for spade connection	M 6	Tightening torque, max.	3 Nm
Tightening torque, min.	3 Nm	Type of connection	Threaded stud connection
Wire connection cross section AWG, max.	AWG 2	Wire connection cross section AWG, min.	AWG 22

General

Rail	TS 35, TS 32	Standards	IEC 60947-7-1
Wire connection cross section AWG, max.	AWG 2	Wire connection cross section AWG, min.	AWG 22

SRL 6

Weidmüller Interface GmbH & Co. KG

Klingenbergstraße 26

D-32758 Detmold

Germany

www.weidmueller.com

Technical data

Rating data

Rated cross-section	35 mm ²	Rated voltage	1,000 V
Rated DC voltage	1,000 V	Rated current	125 A
Standards	IEC 60947-7-1	Volume resistance according to IEC 60947-7-x	0.26 mΩ
Rated impulse withstand voltage	8 kV	Power loss in accordance with IEC 60947-7-x	4 W
Pollution severity	3	Surge voltage category	III

UL rating data

Certificate No. (cURus)	E60693	Conductor size Factory wiring max. (cURus)	2 AWG
Conductor size Factory wiring min. (cURus)	22 AWG	Conductor size Field wiring max. (cURus)	2 AWG
Conductor size Field wiring min. (cURus)	22 AWG	Current size B (cURus)	115 A
Current size C (cURus)	115 A	Voltage size B (cURus)	600 V
Voltage size C (cURus)	600 V		

Classifications

ETIM 6.0	EC000897	ETIM 7.0	EC000897
ETIM 8.0	EC000897	ETIM 9.0	EC000897
ECLASS 9.0	27-14-11-20	ECLASS 9.1	27-14-11-20
ECLASS 10.0	27-14-11-20	ECLASS 11.0	27-14-11-20
ECLASS 12.0	27-14-11-20	ECLASS 13.0	27-25-01-01

Approvals

Approvals



ROHS	Conform
UL File Number Search	UL Website
Certificate No. (cURus)	E60693

Downloads

Approval/Certificate/Document of Conformity	DE PT1001 20230213 001 ISSUE01
Engineering Data	CAD data – STEP
User Documentation	StorageConditionsTerminalBlocks
Catalogues	Catalogues in PDF-format

SRL 6

Weidmüller Interface GmbH & Co. KG

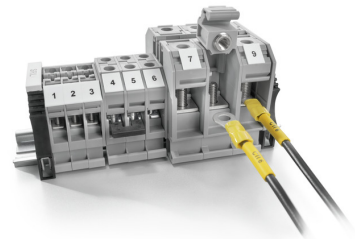
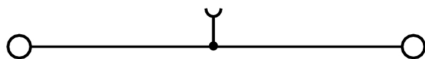
Klingenbergstraße 26

D-32758 Detmold

Germany

www.weidmueller.com

Drawings



SRL 6

Weidmüller Interface GmbH & Co. KG

Klingenbergstraße 26

D-32758 Detmold

Germany

www.weidmueller.com

Accessories

Blank



WS markers are the perfect match for the W-series connectors. Thanks to their system compatibility, the WS tags can also be used with the I-series and the Z-series. The large marking surfaces do not only permit long character strings but also multi-line text. WS markers are ideal for labels with long, customised character strings. Thanks to the proven MultiCard format, printing with PrintJet CONNECT oder/or Plotter is possible.

- Can be fitted in strips or individually
- Markers in proven MultiCard format

For custom printing: Please send us a file of our labeling software M-Print PRO or M-Print PRO Online (without installation) for your labeling specifications.

General ordering data

Type	WS 10/15 MC NE WS	Version
Order No.	1854090000	WS, Terminal marker, 10 x 15 mm, Pitch in mm (P): 15.00
GTIN (EAN)	4032248390694	Weidmueller, Allen-Bradley, white
Qty.	240 pc(s).	

SRL-Series



End plates are fitted to the open side of the last modular terminal before the end bracket. The use of an end plate ensures the function of the modular terminal and the specified rated voltage. It guarantees protection against contact with live parts and makes the final terminal finger-proof.

General ordering data

Type	SEP SRL 6	Version
Order No.	2615010000	End plate (terminals), 63.5 mm x 2 mm
GTIN (EAN)	4050118653960	
Qty.	50 pc(s).	

SRL 6

Weidmüller Interface GmbH & Co. KG

Klingenbergstraße 26

D-32758 Detmold

Germany

www.weidmueller.com

Accessories

Crimp cable lugs



Insulated cable connector in PVC or PC/PA

- Conventional designs
- Not soldered
- With conical entry funnel, except for joint connector

General ordering data

Type	KQI-M6/-1	Version
Order No.	1492230000	cable lug, terminal end, Insulated cable connector, 1 mm ² , 0.5 mm ² - 1
GTIN (EAN)	4050118302400	mm ²
Qty.	100 pc(s).	
Type	KQI-M6/-16	Version
Order No.	1492490000	cable lug, terminal end, Insulated cable connector, 16 mm ² , 16 mm ² -
GTIN (EAN)	4050118302455	16 mm ²
Qty.	50 pc(s).	
Type	KQI-M6/-6	Version
Order No.	1492390000	cable lug, terminal end, Insulated cable connector, 6 mm ² , 4 mm ² - 6
GTIN (EAN)	4050118302509	mm ²
Qty.	100 pc(s).	
Type	KQI-M6/-10	Version
Order No.	1492440000	cable lug, terminal end, Insulated cable connector, 10 mm ² , 10 mm ² -
GTIN (EAN)	4050118302356	10 mm ²
Qty.	50 pc(s).	
Type	KQI-M6/-2,5	Version
Order No.	1492320000	cable lug, terminal end, Insulated cable connector, 2.5 mm ² , 1.5 mm ² -
GTIN (EAN)	4050118302417	2.5 mm ²
Qty.	100 pc(s).	

SRL-Series



Screwable cross-connections are easy to mount and de mount. Thanks to the big contact surface, even high currents can be transmitted with maximum contact reliability.

General ordering data

Type	SQV 6/4	Version
Order No.	2615100000	Cross-connector (terminal), when screwed in, Number of poles: 4,
GTIN (EAN)	4050118653885	Pitch in mm (P): 18.00, Insulated: No, 125 A, black, grey
Qty.	50 pc(s).	

SRL 6**Weidmüller Interface GmbH & Co. KG**

Klingenbergstraße 26

D-32758 Detmold

Germany

www.weidmueller.com**Accessories**

Type	SQV 6/2	Version
Order No.	2615080000	Cross-connector (terminal), when screwed in, Number of poles: 2,
GTIN (EAN)	4050118653908	Pitch in mm (P): 18.00, Insulated: No, 125 A, black, grey
Qty.	100 pc(s).	
Type	SQV 6/3	Version
Order No.	2615090000	Cross-connector (terminal), when screwed in, Number of poles: 3,
GTIN (EAN)	4050118653892	Pitch in mm (P): 18.00, Insulated: No, 125 A, black, grey
Qty.	50 pc(s).	