

CABTITE CGS M63 BK**Weidmüller Interface GmbH & Co. KG**

Klingenbergstraße 26

D-32758 Detmold

Germany

www.weidmueller.com**Similar to illustration**

For metric M20 to M63 through-holes, the Cabtite cable entry system offers separable cable glands for cables with and without plugs. In case of maintenance or changes in the system, pre-assembled cables with diameters of 2 to 35 mm can be inserted quickly and safely in panels or enclosures. Reliable sealing of IP66 in accordance with DIN EN 60529 and an absolutely secure fitting (strain relief based on DIN EN 62444) is ensured by placing slotted sealing elements with a wave cut around the cable before being inserted into one of the two halves of the cable gland. The separable system ensures easy and fast installation. After inserting the sealing element, the two halves of the cable gland are simply snapped together. A lock-nut, which is also separable, on the inside of the panel ensures a reliable and secure hold.

General ordering data

Version	separable cable gland, Cabtite (cable entry system), Polyamide, glass fibre-reinforced, Deep black, Height: 24.7 mm, M 63, -40 °C... 120 °C, IP66
Order No.	2584120000
Type	CABTITE CGS M63 BK
GTIN (EAN)	4050118617238
Qty.	5 pc(s).
Replacement parts	2584010000

CABTITE CGS M63 BK**Weidmüller Interface GmbH & Co. KG**

Klingenbergstraße 26

D-32758 Detmold

Germany

www.weidmueller.com

Technical data**Dimensions and weights**

Depth	39.7 mm	Depth (inches)	1.563 inch
Height	24.7 mm	Height (inches)	0.972 inch
Width	72 mm	Width (inches)	2.835 inch
Length	39.7 mm	Length (inches)	1.563 inch
Net weight	43.5 g		

Temperatures

Operating temperature	-40 °C...120 °C
-----------------------	-----------------

General information

AF size 1	68 mm	AF size 2	82 mm
External thread	M 63	Halogen	No
Length of thread	15 mm	Material	Polyamide, glass fibre-reinforced
Opening diameter	63 mm	Pitch of thread	1.5 mm
Protection degree	IP66	Sealing	TPE
Sealing element	1 large sealing element or 4 small sealing elements	Silicone	No
Tightening torque, max.	7 Nm	Tightening torque, min.	6.8 Nm
UL 94 flammability rating	V-0		

Classifications

ETIM 6.0	EC000441	ETIM 7.0	EC000441
ETIM 8.0	EC000441	ETIM 9.0	EC000441
ECLASS 9.0	27-14-44-32	ECLASS 9.1	27-14-44-32
ECLASS 10.0	27-14-44-32	ECLASS 11.0	27-14-44-32
ECLASS 12.0	27-14-08-01	ECLASS 13.0	27-14-08-01

Approvals

Approvals



ROHS	Conform
------	---------

Downloads

Approval/Certificate/Document of Conformity	EU Declaration of Conformity - Cable entry system
Engineering Data	CAD data – STEP
User Documentation	Installation Instructions
Catalogues	Catalogues in PDF-format

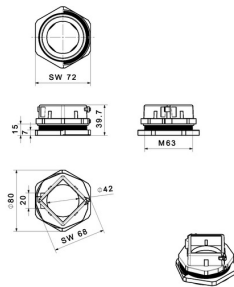
CABTITE CGS M63 BK

Weidmüller Interface GmbH & Co. KG
Klingenbergstraße 26
D-32758 Detmold
Germany

www.weidmueller.com

Drawings

Dimensioned drawing



CABTITE CGS M63 BK

Weidmüller Interface GmbH & Co. KG

Klingenbergstraße 26

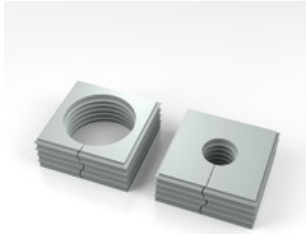
D-32758 Detmold

Germany

www.weidmueller.com

Accessories

SE large 40x40mm in grey



Whether a large or small cable diameter – Cabtite always offers the right seal insert.

The conical shape of the sealing elements allows the previously positioned snap-in grid inlays to be pushed in easily from the inside to the outside. It reliably seals intermediate spaces and provides strain relief in accordance with DIN EN 62444. The seal inserts combined with the frames achieve an IP 66 degree of protection. As a result of its slotted design with wave cut, it is especially suitable for pre-assembled cables.

- The black seal inserts are designed for a particularly high operating temperature and offer fire safety class UL 94 HB
- The grey sealing elements comply with fire safety class UL 94 V0 and are therefore suitable for the demands of the railway industry
- By using multiple inserts, two or more cables, as well as special cables, can be passed through a sealing element

General ordering data

Type	CABTITE BSE LRG GY	Version
Order No.	2584520000	Sealing element, Cabtite (cable entry system), TPE, Light Grey, Height:
GTIN (EAN)	4050118616330	42.8 mm, Width: 42.8 mm, Depth: 17.7 mm, -40 °C...90 °C, IP66
Qty.	10 pc(s).	
Type	CABTITE SE 19-20 LRG GY	Version
Order No.	2584460000	Sealing element, Cabtite (cable entry system), TPE, Light Grey, Height:
GTIN (EAN)	4050118616491	42.8 mm, Width: 42.8 mm, Depth: 17.7 mm, -40 °C...90 °C, IP66
Qty.	10 pc(s).	

Blanking plug

The blanking plugs are used for the safe closing of unneeded cable passages in the sealing elements.



General ordering data

Type	CABTITE BP 8MM PA	Version
Order No.	2652360000	Blind plug, Cabtite (cable entry system), Polyamide, white, Height: 16
GTIN (EAN)	4050118662467	mm, Width: 8 mm, Depth: 16 mm, -40 °C...120 °C, IP66
Qty.	25 pc(s).	
Type	CABTITE BP 10MM PA	Version
Order No.	2652380000	Blind plug, Cabtite (cable entry system), Polyamide, white, Height: 16
GTIN (EAN)	4050118662481	mm, Width: 10 mm, Depth: 16 mm, -40 °C...120 °C, IP66
Qty.	25 pc(s).	

Creation date May 7, 2024 5:07:53 AM CEST

Catalogue status 04.05.2024 / We reserve the right to make technical changes.

CABTITE CGS M63 BK

Weidmüller Interface GmbH & Co. KG

Klingenbergstraße 26

D-32758 Detmold

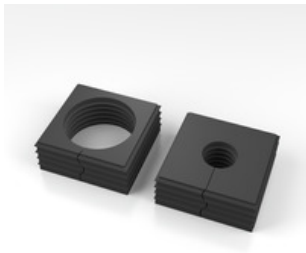
Germany

www.weidmueller.com

Accessories

Type	CABTITE BP 6MM PA	Version
Order No.	2652340000	Blind plug, Cabtite (cable entry system), Polyamide, white, Height: 16
GTIN (EAN)	4050118661842	mm, Width: 6 mm, Depth: 16 mm, -40 °C... 120 °C, IP66
Qty.	25 pc(s).	
Type	CABTITE BP 5MM PA	Version
Order No.	2652330000	Blind plug, Cabtite (cable entry system), Polyamide, white, Height: 12
GTIN (EAN)	4050118661835	mm, Width: 5 mm, Depth: 12 mm, -40 °C... 120 °C, IP66
Qty.	25 pc(s).	
Type	CABTITE BP 9MM PA	Version
Order No.	2652370000	Blind plug, Cabtite (cable entry system), Polyamide, white, Height: 16
GTIN (EAN)	4050118662474	mm, Width: 9 mm, Depth: 16 mm, -40 °C... 120 °C, IP66
Qty.	25 pc(s).	
Type	CABTITE BP 7MM PA	Version
Order No.	2652350000	Blind plug, Cabtite (cable entry system), Polyamide, white, Height: 16
GTIN (EAN)	4050118662450	mm, Width: 7 mm, Depth: 16 mm, -40 °C... 120 °C, IP66
Qty.	25 pc(s).	

SE large 40x40mm in black



Whether a large or small cable diameter – Cabtite always offers the right seal insert.

The conical shape of the sealing elements allows the previously positioned snap-in grid inlays to be pushed in easily from the inside to the outside. It reliably seals intermediate spaces and provides strain relief in accordance with DIN EN 62444. The seal inserts combined with the frames achieve an IP 66 degree of protection. As a result of its slotted design with wave cut, it is especially suitable for pre-assembled cables.

- The black seal inserts are designed for a particularly high operating temperature and offer fire safety class UL 94 HB
- The grey sealing elements comply with fire safety class UL 94 V0 and are therefore suitable for the demands of the railway industry
- By using multiple inserts, two or more cables, as well as special cables, can be passed through a sealing element

General ordering data

Type	CABTITE CSE 7-24 LRG BK	Version
Order No.	2583500000	Sealing element, Cabtite (cable entry system), TPE, Deep black,
GTIN (EAN)	4050118615975	Height: 42.8 mm, Width: 42.8 mm, Depth: 63 mm, -40 °C... 120 °C,
Qty.	10 pc(s).	IP66
Type	CABTITE BSE LRG BK	Version
Order No.	2583900000	Sealing element, Cabtite (cable entry system), TPE, Deep black,
GTIN (EAN)	4050118616378	Height: 42.8 mm, Width: 42.8 mm, Depth: 17.7 mm, -40 °C... 120 °C,
Qty.	10 pc(s).	IP66

CABTITE CGS M63 BK

Weidmüller Interface GmbH & Co. KG

Klingenbergstraße 26

D-32758 Detmold

Germany

www.weidmueller.com

Accessories

Inlays

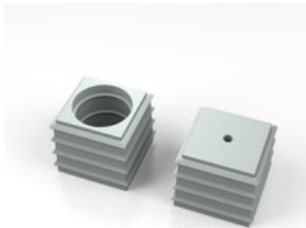


The pluggable click inlays allow the frame openings to be configured as required for use with small or large sealing elements. An audible "click" confirms correct installation. This means that the Cabtite cable entry system can be variably configured for different requirements (cables, conductors, hoses, pneumatic and hydraulic lines).

General ordering data

Type	CABTITE GI X BK	Version
Order No.	2584290000	Inlay, Cabtite (cable entry system), Polyamide, glass fibre-reinforced,
GTIN (EAN)	4050118616439	Deep black, Height: 44 mm, Width: 44 mm, Depth: 17.5 mm, -40 °C...
Qty.	5 pc(s).	120 °C, IP66

SE small 20x20mm in grey



Whether a large or small cable diameter – Cabtite always offers the right seal insert.

The conical shape of the sealing elements allows the previously positioned snap-in grid inlays to be pushed in easily from the inside to the outside. It reliably seals intermediate spaces and provides strain relief in accordance with DIN EN 62444. The seal inserts combined with the frames achieve an IP 66 degree of protection. As a result of its slotted design with wave cut, it is especially suitable for pre-assembled cables.

- The black seal inserts are designed for a particularly high operating temperature and offer fire safety class UL 94 HB
- The grey sealing elements comply with fire safety class UL 94 V0 and are therefore suitable for the demands of the railway industry
- By using multiple inserts, two or more cables, as well as special cables, can be passed through a sealing element

General ordering data

Type	CABTITE SE 2/5-6 SML GY	Version
Order No.	2584890000	Sealing element, Cabtite (cable entry system), TPE, Light Grey, Height:
GTIN (EAN)	4050118616781	20.3 mm, Width: 20.3 mm, Depth: 17.7 mm, -40 °C...90 °C, IP66
Qty.	10 pc(s).	
Type	CABTITE SE 5-6 SML GY	Version
Order No.	2583450000	Sealing element, Cabtite (cable entry system), TPE, Light Grey, Height:
GTIN (EAN)	4050118616538	20.3 mm, Width: 20.3 mm, Depth: 17.7 mm, -40 °C...90 °C, IP66
Qty.	10 pc(s).	
Type	CABTITE BSE SML GY	Version
Order No.	2583350000	Sealing element, Cabtite (cable entry system), TPE, Light Grey, Height:
GTIN (EAN)	4050118615609	20.3 mm, Width: 20.3 mm, Depth: 17.7 mm, -40 °C...90 °C, IP66
Qty.	10 pc(s).	

CABTITE CGS M63 BK

Weidmüller Interface GmbH & Co. KG

Klingenbergstraße 26

D-32758 Detmold

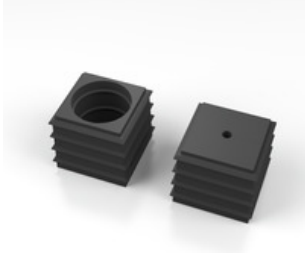
Germany

www.weidmueller.com

Accessories

Type	CABTITE SE 6-7 SML GY	Version
Order No.	2583460000	Sealing element, Cabtite (cable entry system), TPE, Light Grey, Height:
GTIN (EAN)	4050118616668	20.3 mm, Width: 20.3 mm, Depth: 17.7 mm, -40 °C...90 °C, IP66
Qty.	10 pc(s).	

SE small 20x20mm in black



Whether a large or small cable diameter – Cabtite always offers the right seal insert.

The conical shape of the sealing elements allows the previously positioned snap-in grid inlays to be pushed in easily from the inside to the outside. It reliably seals intermediate spaces and provides strain relief in accordance with DIN EN 62444. The seal inserts combined with the frames achieve an IP 66 degree of protection. As a result of its slotted design with wave cut, it is especially suitable for pre-assembled cables.

- The black seal inserts are designed for a particularly high operating temperature and offer fire safety class UL 94 HB
- The grey sealing elements comply with fire safety class UL 94 V0 and are therefore suitable for the demands of the railway industry
- By using multiple inserts, two or more cables, as well as special cables, can be passed through a sealing element

General ordering data

Type	CABTITE SE 7-8 SML BK	Version
Order No.	2584670000	Sealing element, Cabtite (cable entry system), TPE, Deep black,
GTIN (EAN)	4050118616989	Height: 20.3 mm, Width: 20.3 mm, Depth: 17.7 mm, -40 °C...120 °C,
Qty.	10 pc(s).	IP66
Type	CABTITE SE 4/4-5 SML BK	Version
Order No.	2583560000	Sealing element, Cabtite (cable entry system), TPE, Deep black,
GTIN (EAN)	4050118616897	Height: 20.3 mm, Width: 20.3 mm, Depth: 17.7 mm, -40 °C...120 °C,
Qty.	10 pc(s).	IP66
Type	CABTITE SE 9-10 SML BK	Version
Order No.	2584080000	Sealing element, Cabtite (cable entry system), TPE, Deep black,
GTIN (EAN)	4050118616309	Height: 20.3 mm, Width: 20.3 mm, Depth: 17.7 mm, -40 °C...120 °C,
Qty.	10 pc(s).	IP66
Type	CABTITE BSE SML BK	Version
Order No.	2584790000	Sealing element, Cabtite (cable entry system), TPE, Deep black,
GTIN (EAN)	4050118616057	Height: 20.3 mm, Width: 20.3 mm, Depth: 17.7 mm, -40 °C...120 °C,
Qty.	10 pc(s).	IP66

CABTITE CGS M63 BK**Weidmüller Interface GmbH & Co. KG**

Klingenbergstraße 26

D-32758 Detmold

Germany

www.weidmueller.com**Accessories****Round splitting stamp for metric cable glands**

Weidmüller punching tools should be your first choice for making cut-outs in your electrical cabinets!

- PG cable glands
- M cable glands
- Special cable glands

General ordering data

Type	KOS-M63	Version
Order No.	1548400000	Sheet holes
GTIN (EAN)	4050118354027	
Qty.	1 pc(s).	

CABTITE CGS M63 BK**Weidmüller Interface GmbH & Co. KG**

Klingenbergstraße 26

D-32758 Detmold

Germany

www.weidmueller.com**Replacement parts****Cabtite - Separable Cable Glands**

For metric M20 to M63 through-holes, the Cabtite cable entry system offers separable cable glands for cables with and without plugs. In case of maintenance or changes in the system, pre-assembled cables with diameters of 2 to 35 mm can be inserted quickly and safely in panels or enclosures. Reliable sealing of IP66 in accordance with DIN EN 60529 and an absolutely secure fitting (strain relief based on DIN EN 62444) is ensured by placing slotted sealing elements with a wave cut around the cable before being inserted into one of the two halves of the cable gland. The separable system ensures easy and fast installation. After inserting the sealing element, the two halves of the cable gland are simply snapped together. A locknut, which is also separable, on the inside of the panel ensures a reliable and secure hold.

General ordering data

Type	CABTITE LNS M63 BK	Version
Order No.	2584010000	separable locknut, Cabtite (cable entry system), Polyamide, glass fibre-
GTIN (EAN)	4050118617245	reinforced, Deep black, Height: 72 mm, Width: 72 mm, Depth: 7 mm,
Qty.	5 pc(s).	-40 °C...120 °C