

CABTITE FR 24/10 BK**Weidmüller Interface GmbH & Co. KG**

Klingenbergstraße 26

D-32758 Detmold

Germany

www.weidmueller.com

The frame, fabricated from a single piece, is quick and easy to assemble and consists of dimensionally stable, fibre-glass reinforced plastic. The captive foamed seal guarantees effective IP66 sealing in accordance with DIN EN 60529, even on painted and rough surfaces.

General ordering data

| | |
|------------|---|
| Version | Frame, Cabtite (cable entry system), Polyamide, glass fibre-reinforced, Deep black, Height: 70 mm, Width: 153 mm, Depth: 19.6 mm, -40 °C...120 °C, IP66 |
| Order No. | 2583800000 |
| Type | CABTITE FR 24/10 BK |
| GTIN (EAN) | 4050118616682 |
| Qty. | 1 pc(s). |

CABTITE FR 24/10 BK

Weidmüller Interface GmbH & Co. KG

Klingenbergstraße 26

D-32758 Detmold

Germany

www.weidmueller.com

Technical data

Dimensions and weights

| | | | |
|-----------------------------|------------|----------------------------|------------|
| Depth | 19.6 mm | Depth (inches) | 0.772 inch |
| Height | 70 mm | Height (inches) | 2.756 inch |
| Height of lowest version | 19.6 mm | Width | 153 mm |
| Width (inches) | 6.024 inch | Diameter | 5.5 mm |
| Mounting dimension - height | 130 mm | Mounting dimension - width | 32 mm |
| Net weight | 60.95 g | | |

Temperatures

| | |
|-----------------------|------------------|
| Operating temperature | -40 °C... 120 °C |
|-----------------------|------------------|

General information

| | | | |
|---------------------------|------------------|-------------------|--|
| Halogen | No | Material | Polyamide, glass fibre-reinforced |
| Opening length | 113.5 mm | Opening width | 46 mm |
| Protection class (UL) | Type 12, Type 4X | Protection degree | IP66 |
| Sealing | | Sealing element | 2 large sealing elements and 4 small sealing elements or 1 large sealing element and 6 small sealing elements or 10 small sealing elements |
| | TPE | | |
| Silicone | No | Tightening torque | 3 Nm |
| UL 94 flammability rating | V-0 | | |

Classifications

| | | | |
|-------------|-------------|-------------|-------------|
| ETIM 6.0 | EC002624 | ETIM 7.0 | EC002624 |
| ETIM 8.0 | EC002624 | ETIM 9.0 | EC002624 |
| ECLASS 9.0 | 27-18-28-15 | ECLASS 9.1 | 27-18-92-65 |
| ECLASS 10.0 | 27-18-28-15 | ECLASS 11.0 | 27-18-28-15 |
| ECLASS 12.0 | 27-18-28-15 | ECLASS 13.0 | 27-18-28-15 |

Approvals

Approvals



| | |
|-------------------------|------------|
| ROHS | Conform |
| UL File Number Search | UL Website |
| Certificate No. (cURus) | E223801 |

Downloads

| | |
|---|---|
| Approval/Certificate/Document of Conformity | EU Declaration of Conformity - Cable entry system |
| Engineering Data | CAD data – STEP |
| User Documentation | Cabtite Installation Instructions |
| Catalogues | Catalogues in PDF-format |

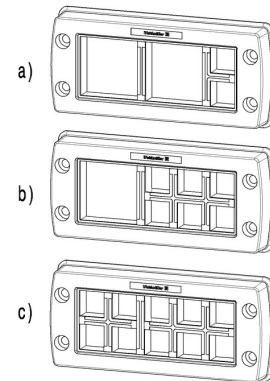
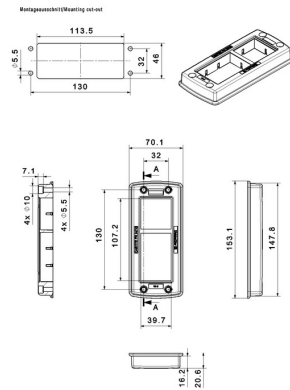
CABTITE FR 24/10 BK

Weidmüller Interface GmbH & Co. KG
Klingenbergstraße 26
D-32758 Detmold
Germany

www.weidmueller.com

Drawings

Dimensioned drawing



CABTITE FR 24/10 BK

Weidmüller Interface GmbH & Co. KG

Klingenbergstraße 26

D-32758 Detmold

Germany

www.weidmueller.com

Accessories

Shield connection rails

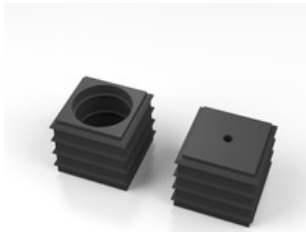


In combination with a large number of different shield connection clamps (KLBÜ), the shield connection rails enable practical, uncomplicated and fast shielding of cables.

General ordering data

| | | |
|------------|----------------------------|--|
| Type | CABTITE CR 24/10 EMV | Version |
| Order No. | 2583890000 | Shield connection rail, Cabtite (cable entry system), Steel, galvanized, |
| GTIN (EAN) | 4050118647068 | silver, Height: 35.23 mm, Width: 140 mm, Depth: 16 mm |
| Qty. | 10 pc(s). | |

SE small 20x20mm in black



Whether a large or small cable diameter – Cabtite always offers the right seal insert.

The conical shape of the sealing elements allows the previously positioned snap-in grid inlays to be pushed in easily from the inside to the outside. It reliably seals intermediate spaces and provides strain relief in accordance with DIN EN 62444. The seal inserts combined with the frames achieve an IP 66 degree of protection. As a result of its slotted design with wave cut, it is especially suitable for pre-assembled cables.

- The black seal inserts are designed for a particularly high operating temperature and offer fire safety class UL 94 HB
- The grey sealing elements comply with fire safety class UL 94 V0 and are therefore suitable for the demands of the railway industry
- By using multiple inserts, two or more cables, as well as special cables, can be passed through a sealing element

General ordering data

| | | |
|------------|----------------------------|---|
| Type | CABTITE SE 4/4-5 SML BK | Version |
| Order No. | 2583560000 | Sealing element, Cabtite (cable entry system), TPE, Deep black, |
| GTIN (EAN) | 4050118616897 | Height: 20.3 mm, Width: 20.3 mm, Depth: 17.7 mm, -40 °C...120 °C, |
| Qty. | 10 pc(s). | IP66 |
| Type | CABTITE SE 7-8 SML BK | Version |
| Order No. | 2584670000 | Sealing element, Cabtite (cable entry system), TPE, Deep black, |
| GTIN (EAN) | 4050118616989 | Height: 20.3 mm, Width: 20.3 mm, Depth: 17.7 mm, -40 °C...120 °C, |
| Qty. | 10 pc(s). | IP66 |
| Type | CABTITE BSE SML BK | Version |
| Order No. | 2584790000 | Sealing element, Cabtite (cable entry system), TPE, Deep black, |
| GTIN (EAN) | 4050118616057 | Height: 20.3 mm, Width: 20.3 mm, Depth: 17.7 mm, -40 °C...120 °C, |
| Qty. | 10 pc(s). | IP66 |

CABTITE FR 24/10 BK

Weidmüller Interface GmbH & Co. KG

Klingenbergstraße 26

D-32758 Detmold

Germany

www.weidmueller.com

Accessories

| | | |
|------------|----------------------------|--|
| Type | CABTITE SE 9-10 SML BK | Version |
| Order No. | 2584080000 | Sealing element, Cabtite (cable entry system), TPE, Deep black, |
| GTIN (EAN) | 4050118616309 | Height: 20.3 mm, Width: 20.3 mm, Depth: 17.7 mm, -40 °C... 120 °C, |
| Qty. | 10 pc(s). | IP66 |

Inlays



The pluggable click inlays allow the frame openings to be configured as required for use with small or large sealing elements. An audible "click" confirms correct installation. This means that the Cabtite cable entry system can be variably configured for different requirements (cables, conductors, hoses, pneumatic and hydraulic lines).

General ordering data

| | | |
|------------|----------------------------|---|
| Type | CABTITE GI T BK | Version |
| Order No. | 2584300000 | Inlay, Cabtite (cable entry system), Polyamide, glass fibre-reinforced, |
| GTIN (EAN) | 4050118619195 | Deep black, Height: 25 mm, Width: 44 mm, Depth: 17.5 mm, -40 °C... |
| Qty. | 5 pc(s). | 120 °C, IP66 |
| Type | CABTITE GI X BK | Version |
| Order No. | 2584290000 | Inlay, Cabtite (cable entry system), Polyamide, glass fibre-reinforced, |
| GTIN (EAN) | 4050118616439 | Deep black, Height: 44 mm, Width: 44 mm, Depth: 17.5 mm, -40 °C... |
| Qty. | 5 pc(s). | 120 °C, IP66 |
| Type | CABTITE GI H BK | Version |
| Order No. | 2584270000 | Inlay, Cabtite (cable entry system), Polyamide, glass fibre-reinforced, |
| GTIN (EAN) | 4050118617122 | Deep black, Height: 44 mm, Width: 67 mm, Depth: 17.5 mm, -40 °C... |
| Qty. | 5 pc(s). | 120 °C, IP66 |

CABTITE FR 24/10 BK

Weidmüller Interface GmbH & Co. KG

Klingenbergstraße 26

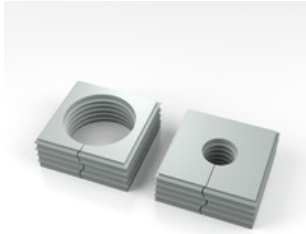
D-32758 Detmold

Germany

www.weidmueller.com

Accessories

SE large 40x40mm in grey



Whether a large or small cable diameter – Cabtite always offers the right seal insert.

The conical shape of the sealing elements allows the previously positioned snap-in grid inlays to be pushed in easily from the inside to the outside. It reliably seals intermediate spaces and provides strain relief in accordance with DIN EN 62444. The seal inserts combined with the frames achieve an IP 66 degree of protection. As a result of its slotted design with wave cut, it is especially suitable for pre-assembled cables.

- The black seal inserts are designed for a particularly high operating temperature and offer fire safety class UL 94 HB
- The grey sealing elements comply with fire safety class UL 94 V0 and are therefore suitable for the demands of the railway industry
- By using multiple inserts, two or more cables, as well as special cables, can be passed through a sealing element

General ordering data

| Type | CABTITE SE 19-20 LRG GY | Version |
|------------|----------------------------|---|
| Order No. | 2584460000 | Sealing element, Cabtite (cable entry system), TPE, Light Grey, Height: |
| GTIN (EAN) | 4050118616491 | 42.8 mm, Width: 42.8 mm, Depth: 17.7 mm, -40 °C...90 °C, IP66 |
| Qty. | 10 pc(s). | |
| Type | CABTITE BSE LRG GY | Version |
| Order No. | 2584520000 | Sealing element, Cabtite (cable entry system), TPE, Light Grey, Height: |
| GTIN (EAN) | 4050118616330 | 42.8 mm, Width: 42.8 mm, Depth: 17.7 mm, -40 °C...90 °C, IP66 |
| Qty. | 10 pc(s). | |

Fixing material



The Cabtite cable entry system offers maximum flexibility in the cable management of control cabinets, enclosures and machines, while at the same time saving time, as well as providing secure sealing and strain relief for pre-terminated and non-terminated cables.

Cabtite's modular design of frame, grid inlays and sealing elements enables rapid configuration of cut-outs for pre-terminated cables - without the use of tools and with a reliable sealing of IP66 according to DIN EN 60529.

Frame. Inlay. Sealing element. Three basic components in the modular system guarantee highest flexibility, variability and diversity of variants.

General ordering data

| Type | CABTITE SC M5X25 SET | Version |
|------------|----------------------------|--|
| Order No. | 2635120000 | Mounting screw, Cabtite (cable entry system), Stainless steel, rust- |
| GTIN (EAN) | 4050118662160 | proof, silver, Height: 30 mm, Width: 8.5 mm, Depth: 8.5 mm |
| Qty. | 1 pc(s). | |

CABTITE FR 24/10 BK

Weidmüller Interface GmbH & Co. KG

Klingenbergstraße 26

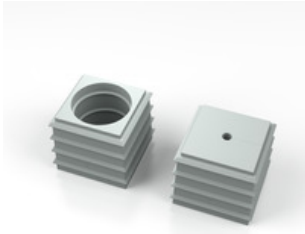
D-32758 Detmold

Germany

www.weidmueller.com

Accessories

SE small 20x20mm in grey



Whether a large or small cable diameter – Cabtite always offers the right seal insert.

The conical shape of the sealing elements allows the previously positioned snap-in grid inlays to be pushed in easily from the inside to the outside. It reliably seals intermediate spaces and provides strain relief in accordance with DIN EN 62444. The seal inserts combined with the frames achieve an IP 66 degree of protection. As a result of its slotted design with wave cut, it is especially suitable for pre-assembled cables.

- The black seal inserts are designed for a particularly high operating temperature and offer fire safety class UL 94 HB
- The grey sealing elements comply with fire safety class UL 94 V0 and are therefore suitable for the demands of the railway industry
- By using multiple inserts, two or more cables, as well as special cables, can be passed through a sealing element

General ordering data

| | | |
|------------|----------------------------|---|
| Type | CABTITE SE 6-7 SML GY | Version |
| Order No. | 2583460000 | Sealing element, Cabtite (cable entry system), TPE, Light Grey, Height: |
| GTIN (EAN) | 4050118616668 | 20.3 mm, Width: 20.3 mm, Depth: 17.7 mm, -40 °C...90 °C, IP66 |
| Qty. | 10 pc(s). | |
| Type | CABTITE BSE SML GY | Version |
| Order No. | 2583350000 | Sealing element, Cabtite (cable entry system), TPE, Light Grey, Height: |
| GTIN (EAN) | 4050118615609 | 20.3 mm, Width: 20.3 mm, Depth: 17.7 mm, -40 °C...90 °C, IP66 |
| Qty. | 10 pc(s). | |
| Type | CABTITE SE 5-6 SML GY | Version |
| Order No. | 2583450000 | Sealing element, Cabtite (cable entry system), TPE, Light Grey, Height: |
| GTIN (EAN) | 4050118616538 | 20.3 mm, Width: 20.3 mm, Depth: 17.7 mm, -40 °C...90 °C, IP66 |
| Qty. | 10 pc(s). | |
| Type | CABTITE SE 2/5-6 SML GY | Version |
| Order No. | 2584890000 | Sealing element, Cabtite (cable entry system), TPE, Light Grey, Height: |
| GTIN (EAN) | 4050118616781 | 20.3 mm, Width: 20.3 mm, Depth: 17.7 mm, -40 °C...90 °C, IP66 |
| Qty. | 10 pc(s). | |

CABTITE FR 24/10 BK

Weidmüller Interface GmbH & Co. KG
Klingenbergstraße 26
D-32758 Detmold
Germany

www.weidmueller.com

Accessories

Locking frame

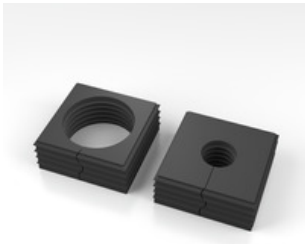


The frame, fabricated from a single piece, is quick and easy to assemble and consists of dimensionally stable, fibre-glass reinforced plastic. The captive foamed seal guarantees effective IP66 sealing in accordance with DIN EN 60529, even on painted and rough surfaces.

General ordering data

| Type | CABTITE FRL 24/10 BK | Version |
|------------|----------------------------|--|
| Order No. | 2584210000 | Locking frame, Cabtite (cable entry system), Polyamide, glass fibre-reinforced, Deep black, Height: 68.8 mm, Width: 152 mm, Depth: |
| GTIN (EAN) | 4050118615289 | 11.3 mm, -40 °C...120 °C, IP66 |
| Qty. | 10 pc(s). | |

SE large 40x40mm in black



Whether a large or small cable diameter – Cabtite always offers the right seal insert.

The conical shape of the sealing elements allows the previously positioned snap-in grid inlays to be pushed in easily from the inside to the outside. It reliably seals intermediate spaces and provides strain relief in accordance with DIN EN 62444. The seal inserts combined with the frames achieve an IP 66 degree of protection. As a result of its slotted design with wave cut, it is especially suitable for pre-assembled cables.

- The black seal inserts are designed for a particularly high operating temperature and offer fire safety class UL 94 HB
- The grey sealing elements comply with fire safety class UL 94 V0 and are therefore suitable for the demands of the railway industry
- By using multiple inserts, two or more cables, as well as special cables, can be passed through a sealing element

General ordering data

| Type | CABTITE BSE LRG BK | Version |
|------------|----------------------------|---|
| Order No. | 2583900000 | Sealing element, Cabtite (cable entry system), TPE, Deep black, |
| GTIN (EAN) | 4050118616378 | Height: 42.8 mm, Width: 42.8 mm, Depth: 17.7 mm, -40 °C...120 °C, |
| Qty. | 10 pc(s). | IP66 |
| Type | CABTITE CSE 7-24 LRG BK | Version |
| Order No. | 2583500000 | Sealing element, Cabtite (cable entry system), TPE, Deep black, |
| GTIN (EAN) | 4050118615975 | Height: 42.8 mm, Width: 42.8 mm, Depth: 63 mm, -40 °C...120 °C, |
| Qty. | 10 pc(s). | IP66 |

CABTITE FR 24/10 BK

Weidmüller Interface GmbH & Co. KG

Klingenbergstraße 26

D-32758 Detmold

Germany

www.weidmueller.com

Accessories

Blanking plug

The blanking plugs are used for the safe closing of
unneeded cable passages in the sealing elements.



General ordering data

| | | |
|------------|----------------------------|--|
| Type | CABTITE BP 5MM PA | Version |
| Order No. | 2652330000 | Blind plug, Cabtite (cable entry system), Polyamide, white, Height: 12 |
| GTIN (EAN) | 4050118661835 | mm, Width: 5 mm, Depth: 12 mm, -40 °C... 120 °C, IP66 |
| Qty. | 25 pc(s). | |
| Type | CABTITE BP 9MM PA | Version |
| Order No. | 2652370000 | Blind plug, Cabtite (cable entry system), Polyamide, white, Height: 16 |
| GTIN (EAN) | 4050118662474 | mm, Width: 9 mm, Depth: 16 mm, -40 °C... 120 °C, IP66 |
| Qty. | 25 pc(s). | |
| Type | CABTITE BP 8MM PA | Version |
| Order No. | 2652360000 | Blind plug, Cabtite (cable entry system), Polyamide, white, Height: 16 |
| GTIN (EAN) | 4050118662467 | mm, Width: 8 mm, Depth: 16 mm, -40 °C... 120 °C, IP66 |
| Qty. | 25 pc(s). | |
| Type | CABTITE BP 6MM PA | Version |
| Order No. | 2652340000 | Blind plug, Cabtite (cable entry system), Polyamide, white, Height: 16 |
| GTIN (EAN) | 4050118661842 | mm, Width: 6 mm, Depth: 16 mm, -40 °C... 120 °C, IP66 |
| Qty. | 25 pc(s). | |
| Type | CABTITE BP 7MM PA | Version |
| Order No. | 2652350000 | Blind plug, Cabtite (cable entry system), Polyamide, white, Height: 16 |
| GTIN (EAN) | 4050118662450 | mm, Width: 7 mm, Depth: 16 mm, -40 °C... 120 °C, IP66 |
| Qty. | 25 pc(s). | |
| Type | CABTITE BP 10MM PA | Version |
| Order No. | 2652380000 | Blind plug, Cabtite (cable entry system), Polyamide, white, Height: 16 |
| GTIN (EAN) | 4050118662481 | mm, Width: 10 mm, Depth: 16 mm, -40 °C... 120 °C, IP66 |
| Qty. | 25 pc(s). | |