

ENERGY ANALYSER 750-24**Weidmüller Interface GmbH & Co. KG**

Klingenbergstraße 26

D-32758 Detmold

Germany

www.weidmueller.com**Energy analysers**

More and more non-linear consumers and plant components are finding their way into production facilities. They influence, for example, mains frequency, phase shift and amplitudes of the phases.

This has an influence on the quality of the electrical energy and thus on plant availability.

The energy analysers measure all quality parameters - from the parameters of symmetry to transients - and many more.

After comprehensive testing, optimisation steps can then be initiated to maximise the efficiency and availability of the plants.

General ordering data

Order No.	2534160000
Type	ENERGY ANALYSER 750-24
GTIN (EAN)	4050118545821
Qty.	1 pc(s).

ENERGY ANALYSER 750-24

Weidmüller Interface GmbH & Co. KG

Klingenbergstraße 26

D-32758 Detmold

Germany

www.weidmueller.com

Technical data

Dimensions and weights

Depth	81 mm	Depth (inches)	3.189 inch
Height	144 mm	Height (inches)	5.669 inch
Width	144 mm	Width (inches)	5.669 inch
Net weight	1,080 g		

Temperatures

Storage temperature	-25 °C...70 °C	Operating temperature	-10 °C...55 °C
Humidity at operating temperature	5...95 % RH		

Measuring current input

Current-measuring channels	4 + 2	Distortion factor THD-I in %	Yes
Harmonics, per order / current	1..63.	Measuring accuracy for current	0.1 %
Rated current	1 / 5 A	Residual current measuring	Yes

Measuring voltage input

Distortion factor THD-U in %	Yes	Four-wire system	Yes
Harmonics, per order / voltage	1..63.	Measurement range, voltage L-L, AC	600 V
Measurement range, voltage L-N, AC	347 V	Measuring accuracy for voltage	0.1 %
Quadrants	4	Three-wire system	Yes

Communication

Interface	Protocol	Modbus RTU, Modbus-Gateway, Modbus TCP/IP, Modbus RTU over Ethernet, SNMP, Profibus DP V0, BACnet (optional)
	RS485: 9.6 – 921.6 kbps, Profibus DP, Ethernet, Web server/e-mail	

Inputs/outputs

Number of digital inputs	2	Number of digital outputs	2
Number of pulse outputs	2	Temperature input	Yes

Measurement data recording

Memory; minimum and maximum values	Yes	Memory size	256 MB
Number of memory values	10,000 k	Update interval register	200 ms
Min. memory recording interval	1 s	Software	ecoExplorer go®
Integrated logic	Yes		

ENERGY ANALYSER 750-24

Weidmüller Interface GmbH & Co. KG

Klingenbergstraße 26

D-32758 Detmold

Germany

www.weidmueller.com

Technical data

Technical data

Input frequency	<20 Hz	Rated current	1 / 5 A
Version		Standards	DIN EN 61000-4-2, DIN EN 61000-4-3, DIN EN 61000-4-4, DIN EN 61000-4-5, DIN EN 61000-4-6, DIN EN 61000-4-8, DIN EN 61238-1, EN 61000-4-11, EN 55011, IEC 61010-1, IEC 61010-2-030
	Power measurement/dis- play for 1-, 3-phase mains		
Measurement range, voltage L-N, AC	347 V	Measurement range, voltage L-L, AC	600 V
Surge voltage category	600 V CAT III	Voltage supply	48...110 V AC, 24...150 V DC
Three-wire system	Yes	Four-wire system	Yes
Quadrants	4	Sampling frequency 50/60 Hz	25.6 kHz
Continuous measurements	Yes	Measurement result per second	5 ms
Effective value from the period (50/60 Hz)	10 / 12	Residual current measuring	Yes
Current-measuring channels	4 + 2	Measuring accuracy for voltage	0.1 %
Measuring accuracy for current	0.1 %	Measurement accuracy for active energy (kWh, .../5 A)	Class 0.2S
Operating-hours counter	Yes	Weekly time switch	Yes
Clock	Yes	Bimetal function	Yes

Voltage quality measurement

Harmonics, per order / voltage	1.-63.	Harmonics, per order / current	1.-63.
Distortion factor THD-U in %	Yes	Distortion factor THD-I in %	Yes
Unbalanced	Yes	Positive, negative and zero system	Yes
Current flicker intensity	Yes	Short/long time flicker	Yes
Brief interruptions	Yes	Sequence-of-events recorder function	Yes

Insulation coordination

Surge voltage category	600 V CAT III
------------------------	---------------

Classifications

ETIM 6.0	EC002301	ETIM 7.0	EC002301
ETIM 8.0	EC002301	ETIM 9.0	EC002301
ECLASS 9.0	27-14-23-30	ECLASS 9.1	27-21-03-01
ECLASS 10.0	27-14-23-30	ECLASS 11.0	27-14-23-30
ECLASS 12.0	27-14-23-30	ECLASS 13.0	27-14-23-30

Approvals

Approvals



ROHS	Conform
UL File Number Search	UL Website
Certificate no. (cULus)	E469563

ENERGY ANALYSER 750-24

Weidmüller Interface GmbH & Co. KG
Klingenbergstraße 26
D-32758 Detmold
Germany

www.weidmueller.com

Technical data

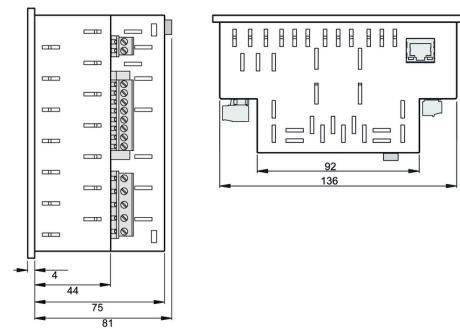
Downloads

Approval/Certificate/Document of Conformity	Certificate class A Application notes – Declaration of Conformity
Engineering Data	CAD data – STEP
Software	Device description – GSD DATA Device description – MODBUS address list Win64 - ecoExplorer go
User Documentation	Quick Guide German/English Manual Energy Analyser 750 German/Englisch Application notes – Manual ECOEXPLORER GO English
Catalogues	Catalogues in PDF-format

ENERGY ANALYSER 750-24

Weidmüller Interface GmbH & Co. KG
Klingenbergstraße 26
D-32758 Detmold
Germany

www.weidmueller.com

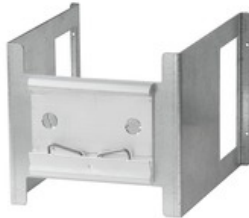
Drawings

ENERGY ANALYSER 750-24**Weidmüller Interface GmbH & Co. KG**

Klingenbergstraße 26

D-32758 Detmold

Germany

www.weidmueller.com**Accessories****Accessories****General ordering data**

Type	ENERGY METER BRACKET B1
Order No.	2433040000
GTIN (EAN)	4050118446364
Qty.	1 pc(s).

Type	ENERGY METER SEAL L144
Order No.	2495630000
GTIN (EAN)	4050118505870
Qty.	1 pc(s).