

FP ESWB TERMINAL SET**Weidmüller Interface GmbH & Co. KG**

Klingenbergstraße 26

D-32758 Detmold

Germany

www.weidmueller.com

The combination of FieldPower® Elevator and flat cable allows to integrate different functionalities per hoistway landing into one solution: safety chain, bus communication and power distribution. No special tool is required for a quick and easy installation.

General ordering data

Version	Wiring box for elevator shaft
Order No.	2524850000
Type	FP ESWB TERMINAL SET
GTIN (EAN)	4050118536430
Qty.	1 pc(s).
Packaging	Box

FP ESWB TERMINAL SET**Weidmüller Interface GmbH & Co. KG**

Klingenbergstraße 26

D-32758 Detmold

Germany

www.weidmueller.com**Technical data****Dimensions and weights**

Depth	64.5 mm	Depth (inches)	2.539 inch
Height	122 mm	Height (inches)	4.803 inch
Width	96 mm	Width (inches)	3.78 inch
Net weight	261.28 g		

Temperatures

Storage temperature	-5 °C...50 °C	Operating temperature	-5 °C...50 °C
---------------------	---------------	-----------------------	---------------

Classifications

ETIM 6.0	EC000214	ETIM 7.0	EC000214
ETIM 8.0	EC000214	ETIM 9.0	EC000214
ECLASS 9.0	27-14-24-09	ECLASS 9.1	27-14-24-09
ECLASS 10.0	27-14-24-09	ECLASS 11.0	27-14-24-09
ECLASS 12.0	27-14-24-09	ECLASS 13.0	27-14-24-09

Environmental Product Compliance

REACH SVHC	Potassium perfluorobutane sulfonate 29420-49-3
SCIP	5f19cd84-8946-4797-9386-3ac323b95c10

Important note

Product information	The elevator shaft wiring box can be used with approved flat cable from manufacturer Draka EHC.
---------------------	---

Approvals

ROHS	Conform
------	---------

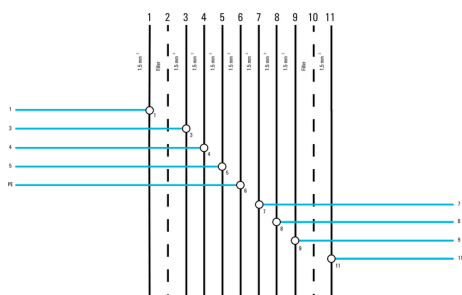
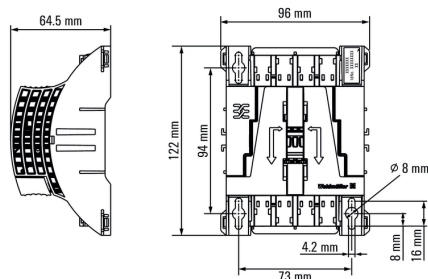
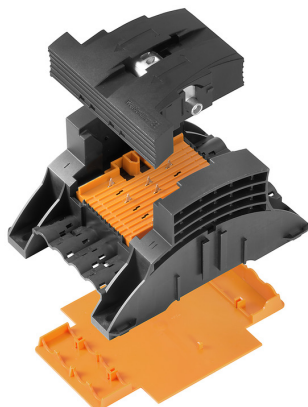
Downloads

User Documentation	Installation Instructions FieldPower® Elevator Shaft Wiring Box
Catalogues	Catalogues in PDF-format

FP ESWB TERMINAL SET

Weidmüller Interface GmbH & Co. KG
Klingenbergstraße 26
D-32758 Detmold
Germany

www.weidmueller.com

Drawings

FP ESWB TERMINAL SET**Weidmüller Interface GmbH & Co. KG**

Klingenbergstraße 26

D-32758 Detmold

Germany

www.weidmueller.com**Accessories****VDE-insulated diagonal-cutting pliers**

When working with live voltages, you must follow special guidelines and use special tools - tools which have been specially produced and tested for this purpose.

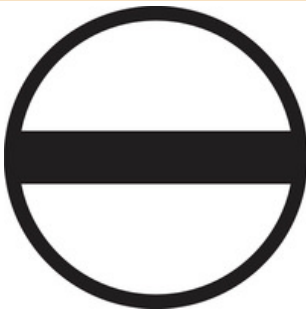
Weidmüller offers a complete line of pliers which comply with national and international testing standards.

All pliers are produced and tested according to DIN EN 60900.

The pliers are ergonomically designed to fit to the hand form, and thus feature an improved hand position. The fingers are not pressed together - this results in less fatigue during operation.

General ordering data

Type	KSE 160	Version
Order No.	9046410000	Diagonal-cutting pliers
GTIN (EAN)	4032248357734	
Qty.	1 pc(s).	

Slotted screwdriver

Slotted screwdriver with rounded blade SD DIN 5265, ISO 2380/2, output to DIN 5264, ISO 2380/1. ChromTop tip, SoftFinish grip

General ordering data

Type	SDS 1.2X6.5X150	Version
Order No.	9009010000	Screwdriver, Screwdriver
GTIN (EAN)	4032248266869	
Qty.	1 pc(s).	

FP ESWB TERMINAL SET**Weidmüller Interface GmbH & Co. KG**

Klingenbergstraße 26

D-32758 Detmold

Germany

www.weidmueller.com**Accessories****Slotted screwdriver**

VDE insulated slot-head screwdriver, SDI DIN 7437, ISO 2380/2, drive output acc. to DIN 5264, ISO 2380/1.
SoftFinish grip

General ordering data

Type	SDIS 0.4X2.5X75	Version
Order No.	9008370000	Screwdriver, Screwdriver
GTIN (EAN)	4032248056330	
Qty.	1 pc(s).	