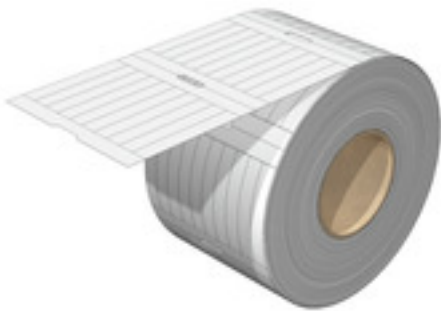


ELS 7/40 MM WS**Weidmüller Interface GmbH & Co. KG**

Klingenbergstraße 26

D-32758 Detmold

Germany

www.weidmueller.com**ELS**

ELS tags are special and non-adhesive insertable labels for WKM cable markers or for group tag carriers. The matt, thin but tear-resistant polyester provides very good labelling and excellent readability. Used in combination with water-repellent WKM sleeves, the solution guarantees particularly long-lasting identification of cables even in harsh environments.

General ordering data

| | |
|--------------------|---|
| Version | ELS, Insert markers, 40 x 6.3 mm, white |
| Order No. | 2518620000 |
| Type | ELS 7/40 MM WS |
| GTIN (EAN) | 4050118531312 |
| Qty. | 3,000 pc(s). |
| compatible printer | 2599430000 2599440000 |

ELS 7/40 MM WS**Weidmüller Interface GmbH & Co. KG**

Klingenbergstraße 26

D-32758 Detmold

Germany

www.weidmueller.com**Technical data****Dimensions and weights**

| | | | |
|------------|---------|-----------------|------------|
| Depth | 0.14 mm | Depth (inches) | 0.006 inch |
| Height | 40 mm | Height (inches) | 1.575 inch |
| Width | 6.3 mm | Width (inches) | 0.248 inch |
| Net weight | 0.064 g | | |

Temperatures

| | |
|-----------------------------|--------------|
| Operating temperature range | -40...150 °C |
|-----------------------------|--------------|

General data

| | | | |
|-----------------------------------|-----------|-----------------------------------|--------------|
| Colour | white | Halogen | No |
| Material | Polyester | Operating temperature range | -40...150 °C |
| Operating temperature range, max. | 150 °C | Operating temperature range, min. | -40 °C |
| UL 94 flammability rating | HB | Version | halogen-free |
| Width | 6.3 mm | | |

Conductor and cable markers

| | |
|---------|----|
| Halogen | No |
|---------|----|

Classifications

| | | | |
|-------------|-------------|-------------|-------------|
| ETIM 6.0 | EC001530 | ETIM 7.0 | EC001530 |
| ETIM 8.0 | EC001530 | ETIM 9.0 | EC001530 |
| ECLASS 9.0 | 27-40-04-01 | ECLASS 9.1 | 27-40-04-01 |
| ECLASS 10.0 | 27-40-04-01 | ECLASS 11.0 | 27-28-11-02 |
| ECLASS 12.0 | 27-28-11-02 | ECLASS 13.0 | 27-28-11-02 |

Approvals

| | |
|------|---------|
| ROHS | Conform |
|------|---------|

Downloads

| | |
|------------|--|
| Catalogues | Catalogues in PDF-format |
|------------|--|

ELS 7/40 MM WS

Weidmüller Interface GmbH & Co. KG
Klingenbergstraße 26
D-32758 Detmold
Germany

www.weidmueller.com

Drawings



ELS 7/40 MM WS**Weidmüller Interface GmbH & Co. KG**

Klingenbergstraße 26

D-32758 Detmold

Germany

www.weidmueller.com**Accessories****THM MULTIMARK PLUS**

These printers produce excellent printing results thanks to the thermal transfer technique. Different materials and the user-friendly printing system under Windows optimise marking efforts.

General ordering data

| | |
|------------|----------------------------|
| Type | MM PLUS ROLLER 110 |
| Order No. | 2672590000 |
| GTIN (EAN) | 4050118708097 |
| Qty. | 1 pc(s). |

Ink ribbons

These printers produce excellent printing results thanks to the thermal transfer technique. Different materials and the user-friendly printing system under Windows optimise marking efforts.

General ordering data

| | | |
|------------|----------------------------|------------|
| Type | RIBBON MM 110/360 SW | Version |
| Order No. | 2005070000 | Ink ribbon |
| GTIN (EAN) | 4050118390049 | |
| Qty. | 1 pc(s). | |

ELS 7/40 MM WS

Weidmüller Interface GmbH & Co. KG
Klingenbergstraße 26
D-32758 Detmold
Germany

www.weidmueller.com

Accessories

THM MULTIMARK



These printers produce excellent printing results thanks to the thermal transfer technique. Different materials and the user-friendly printing system under Windows optimise marking efforts.

General ordering data

| | |
|------------|----------------------------|
| Type | THM MMP ROLLER 115 |
| Order No. | 1357420000 |
| GTIN (EAN) | 4050118160314 |
| Qty. | 1 pc(s). |