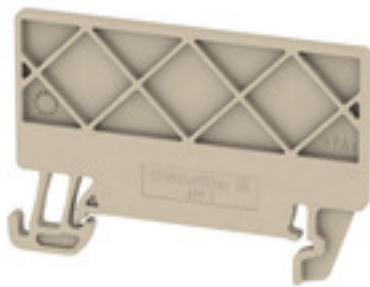


APP 1**Weidmüller Interface GmbH & Co. KG**

Klingenbergstraße 26

D-32758 Detmold

Germany

www.weidmueller.com**Product image**

A partition plate is used for the optical separation of circuits or used for electrical isolation from neighbouring cross-connectors. In contrast to the end plate, the contour can be larger than the adjacent terminal blocks. However, it should not be smaller, as otherwise the required clearance and creepage distances within the application can no longer be maintained.

General ordering data

Version	A-series, Partition plate
Order No.	2488970000
Type	APP 1
GTIN (EAN)	4050118499216
Qty.	50 pc(s).

APP 1**Weidmüller Interface GmbH & Co. KG**

Klingenbergstraße 26

D-32758 Detmold

Germany

www.weidmueller.com**Technical data****Dimensions and weights**

Depth	36.15 mm	Depth (inches)	1.423 inch
Height	52.67 mm	Height (inches)	2.074 inch
Width	2.5 mm	Width (inches)	0.098 inch
Net weight	2.447 g		

Temperatures

Storage temperature	-25 °C...55 °C	Continuous operating temp., min.	-60 °C
Continuous operating temp., max.	130 °C		

Material data

Material	Wemid	Colour	dark beige
UL 94 flammability rating	V-0		

Classifications

ETIM 6.0	EC000886	ETIM 7.0	EC000886
ETIM 8.0	EC000886	ETIM 9.0	EC000886
ECLASS 9.0	27-14-11-92	ECLASS 9.1	27-14-11-33
ECLASS 10.0	27-14-11-92	ECLASS 11.0	27-14-11-92
ECLASS 12.0	27-14-11-92	ECLASS 13.0	27-25-03-01

Approvals

ROHS	Conform
------	---------

Downloads

Approval/Certificate/Document of Conformity	Confirmation of Standards EN 45545-2_2020-10
Engineering Data	CAD data – STEP
User Documentation	ADDITIONAL_NOTE_DE ADDITIONAL_NOTE_EN StorageConditionsTerminalBlocks
Catalogues	Catalogues in PDF-format

APP 1

Weidmüller Interface GmbH & Co. KG
Klingenbergstraße 26
D-32758 Detmold
Germany

www.weidmueller.com

Drawings

