

SAIE-M12S-CD-2.0A HW**Weidmüller Interface GmbH & Co. KG**

Klingenbergstraße 26

D-32758 Detmold

Germany

www.weidmueller.com

Various build-in connectors are required for the connections on the device side of the sensor/actuator cabling. These are available in the versions M12, M8 and M5.

General ordering data

Version	Built-in plugs, M12, PG 9, Number of poles: 5, 2 m
Order No.	2484420200
Type	SAIE-M12S-CD-2.0A HW
GTIN (EAN)	4050118495935
Qty.	1 pc(s).

SAIE-M12S-CD-2.0A HW**Weidmüller Interface GmbH & Co. KG**

Klingenbergstraße 26

D-32758 Detmold

Germany

www.weidmueller.com

Technical data**Dimensions and weights**

Net weight	120 g
------------	-------

Technical specifications for cable

Acceleration	5 m/s ²	Bending cycles	1 mill.
Bending radius, min., moving	10 x cable diameter	Bending radius, min., stationary	5 x cable diameter
Cable Material	PUR halogen-free	Cable length	2 m
Colour coding	red, black, white, blue	Number of poles	5
Outer cladding in accordance with UL AWM style	20236 (80 °C / 30 V)	PE function	No
Sheath material	PUR halogen-free	Sheathing colour	violet
Speed	5 m/s	Welding spark resistance	No
Wire cross section (Print/Online)	PUR 0.25 mm ² / PVC 0.34 mm ²		

Technical data customisable plug-in connectors

Cable diameter, max.	7.5	Cable diameter, min.	6.9
Cable glands	PG 9	Coding	A-coded
Contact surface	Gold-plated	Number of poles	5
Pollution severity	3	Protection degree	IP68
Rated current	4 A	Rated voltage	125 V
Shield connection	Yes	Temperature range of housing	-5 ... +70 °C

Classifications

ETIM 6.0	EC002635	ETIM 7.0	EC003570
ETIM 8.0	EC003570	ETIM 9.0	EC003570
ECLASS 9.0	27-44-01-03	ECLASS 9.1	27-44-01-03
ECLASS 10.0	27-44-01-03	ECLASS 11.0	27-44-01-03
ECLASS 12.0	27-44-01-03	ECLASS 13.0	27-44-01-03

Environmental Product Compliance

REACH SVHC	Lead 7439-92-1
SCIP	ebf89fc8-a87f-4691-b87a-dfb9921774b4

Approvals

ROHS	Conform
------	---------

Downloads

Engineering Data	CAD data – STEP
Catalogues	Catalogues in PDF-format
Brochures	FL FIELDWIRING EN

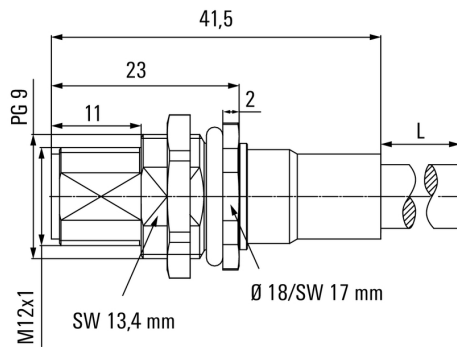
SAIE-M12S-CD-2.0A HW

Weidmüller Interface GmbH & Co. KG
Klingenbergstraße 26
D-32758 Detmold
Germany

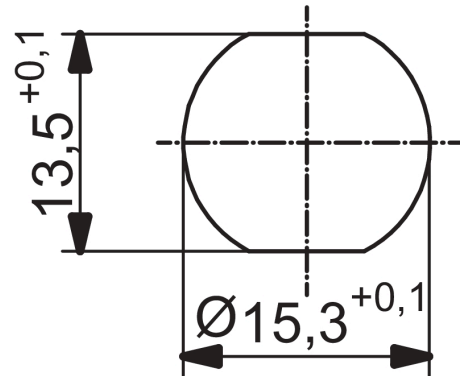
www.weidmueller.com

Drawings

Dimensioned drawing



Detailed drawing



Wiring diagram

