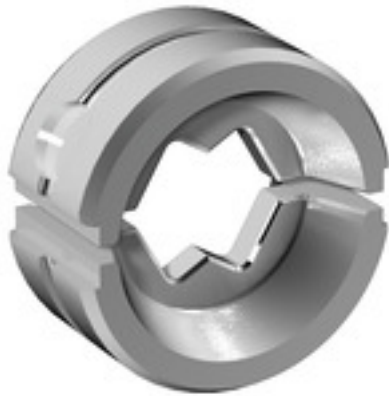


ES EPG/HPG 60 WM 70**Weidmüller Interface GmbH & Co. KG**

Klingenbergstraße 26

D-32758 Detmold

Germany

www.weidmueller.com**Similar to illustration****Crimping tools for cable lugs, connectors and wire-end ferrules with interchangeable inserts**

- extremely fast processing thanks to hydraulic support
- large processing range up to 300 mm²
- 270° revolving quick-action crimping head
- automatic pressure limitation and monitoring via pressure sensor
- electronic control and monitoring of the crimping process
- Saving of all crimping cycles and error messages to internal memory
- Reading of all cycles and error messages via USB
- Li-ion rechargeable battery with charge status indicator: 18 V, 1.5 Ah

General ordering data

Version	Crimping tool insert, WM crimp
Order No.	2469590000
Type	ES EPG/HPG 60 WM 70
GTIN (EAN)	4050118483857
Qty.	1 pc(s).

ES EPG/HPG 60 WM 70**Weidmüller Interface GmbH & Co. KG**

Klingenbergstraße 26

D-32758 Detmold

Germany

www.weidmueller.com**Technical data****Dimensions and weights**

Depth	22 mm	Depth (inches)	0.866 inch
Height	42 mm	Height (inches)	1.654 inch
Width	42 mm	Width (inches)	1.654 inch
Net weight	138 g		

Crimp inserts

Crimp cross-section copper	70	Crimping width	5 mm
Crimping width in mm	5		

Description of contact

Conductor cross-section, max. AWG	2/0	Type of contact	Euro series cable lug
-----------------------------------	-----	-----------------	-----------------------

tool data crimping

Cable lug cross section	nominal	70 mm ²
Crimping type/profile	WM crimp	

Classifications

ETIM 6.0	EC001282	ETIM 7.0	EC001282
ETIM 8.0	EC001282	ETIM 9.0	EC001282
ECLASS 9.0	21-04-90-90	ECLASS 9.1	21-01-90-90
ECLASS 10.0	21-04-90-90	ECLASS 11.0	21-04-90-90
ECLASS 12.0	21-04-90-90	ECLASS 13.0	21-04-90-90

Downloads

Catalogues	Catalogues in PDF-format
------------	--

ES EPG/HPG 60 WM 70

Weidmüller Interface GmbH & Co. KG

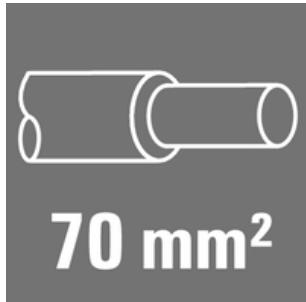
Klingenbergstraße 26

D-32758 Detmold

Germany

www.weidmueller.com

Accessories

70 mm²

The use of insulated connectors guarantees users consistent electrical connection quality in the long term.

- Wide range of insulated and non-insulated cable lugs and connectors
- Tubular cable lugs according to current market standards (Euroseries)
- Compression cable lugs acc. to DIN 46235
- Sheet metal cable lugs acc. to DIN 46234
- Insulated ring cable lugs to DIN 46237
- Insulated pin cable lugs to DIN 46231

General ordering data

Type	KQN-M10/-70	Version
Order No.	1493220000	cable lug, terminal end, 70 mm ²
GTIN (EAN)	4050118302882	
Qty.	50 pc(s).	
Type	KQN-M12/-70	Version
Order No.	1493230000	cable lug, terminal end, 70 mm ²
GTIN (EAN)	4050118303032	
Qty.	50 pc(s).	
Type	KQN-M8/-70	Version
Order No.	1493210000	cable lug, terminal end, 70 mm ²
GTIN (EAN)	4050118302875	
Qty.	50 pc(s).	
Type	KQN-M16/-70	Version
Order No.	1493240000	cable lug, terminal end, 70 mm ²
GTIN (EAN)	4050118303131	
Qty.	50 pc(s).	
Type	KQN-M20/-70	Version
Order No.	1493250000	cable lug, terminal end, 70 mm ²
GTIN (EAN)	4050118303087	
Qty.	50 pc(s).	
Type	KQN-M6/-70	Version
Order No.	1493190000	cable lug, terminal end, 70 mm ²
GTIN (EAN)	4050118303261	
Qty.	50 pc(s).	

ES EPG/HPG 60 WM 70

Weidmüller Interface GmbH & Co. KG

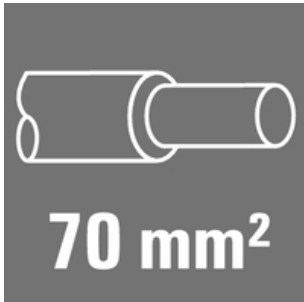
Klingenbergstraße 26

D-32758 Detmold

Germany

www.weidmueller.com

Accessories

70 mm²

The use of insulated connectors guarantees users consistent electrical connection quality in the long term.

- Wide range of insulated and non-insulated cable lugs and connectors
- Tubular cable lugs according to current market standards (Euroseries)
- Compression cable lugs acc. to DIN 46235
- Sheet metal cable lugs acc. to DIN 46234
- Insulated ring cable lugs to DIN 46237
- Insulated pin cable lugs to DIN 46231

General ordering data

Type	KSN/-70	Version
Order No.	1492830000	cable lug, terminal end, 70 mm ² , 70 mm ²
GTIN (EAN)	4050118302585	
Qty.	50 pc(s).	

Tools



Crimping tools for cable lugs, connectors and wire-end ferrules with interchangeable inserts

- extremely fast processing thanks to hydraulic support
- large processing range up to 400 mm²
- 360° revolving quick action crimping head
- automatic pressure limitation and monitoring via pressure sensor
- Additional features for APG series:
- electronic control and monitoring of the crimping process
- Saving of all crimping cycles and error messages to internal memory
- Reading of all cycles and error messages via USB

General ordering data

Type	HPG 60	Version
Order No.	2453820000	6mm ² , 300mm ² , Hexagonal crimp, WM crimp, Indent crimp,
GTIN (EAN)	4050118468427	Trapezoidal crimp, Oval crimping
Qty.	1 pc(s).	

ES EPG/HPG 60 WM 70

Weidmüller Interface GmbH & Co. KG

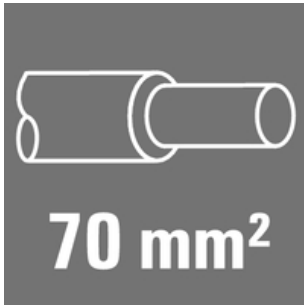
Klingenbergstraße 26

D-32758 Detmold

Germany

www.weidmueller.com

Accessories

70 mm²

The use of insulated connectors guarantees users consistent electrical connection quality in the long term.

- Wide range of insulated and non-insulated cable lugs and connectors
- Tubular cable lugs according to current market standards (Euroseries)
- Compression cable lugs acc. to DIN 46235
- Sheet metal cable lugs acc. to DIN 46234
- Insulated ring cable lugs to DIN 46237
- Insulated pin cable lugs to DIN 46231

General ordering data

Type	KP-M10/-70	Version
Order No.	1498140000	cable lug, terminal end, 70 mm ²
GTIN (EAN)	4050118307429	
Qty.	50 pc(s).	
Type	KP-M20/-70	Version
Order No.	1498170000	cable lug, terminal end, 70 mm ²
GTIN (EAN)	4050118307344	
Qty.	50 pc(s).	
Type	KP-M16/-70	Version
Order No.	1498160000	cable lug, terminal end, 70 mm ²
GTIN (EAN)	4050118307481	
Qty.	50 pc(s).	
Type	KP-M8/-70	Version
Order No.	1498130000	cable lug, terminal end, 70 mm ²
GTIN (EAN)	4050118307351	
Qty.	50 pc(s).	
Type	KP-M14/-70	Version
Order No.	1498560000	cable lug, terminal end, 70 mm ²
GTIN (EAN)	4050118307696	
Qty.	50 pc(s).	
Type	KP-M12/-70	Version
Order No.	1498150000	cable lug, terminal end, 70 mm ²
GTIN (EAN)	4050118307467	
Qty.	50 pc(s).	

ES EPG/HPG 60 WM 70

Weidmüller Interface GmbH & Co. KG

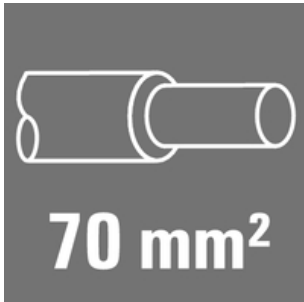
Klingenbergstraße 26

D-32758 Detmold

Germany

www.weidmueller.com

Accessories

70 mm²

The use of insulated connectors guarantees users consistent electrical connection quality in the long term.

- Wide range of insulated and non-insulated cable lugs and connectors
- Tubular cable lugs according to current market standards (Euroseries)
- Compression cable lugs acc. to DIN 46235
- Sheet metal cable lugs acc. to DIN 46234
- Insulated ring cable lugs to DIN 46237
- Insulated pin cable lugs to DIN 46231

General ordering data

Type	KWN-M10/-70 45	Version
Order No.	1496320000	cable lug, terminal end, 70 mm ²
GTIN (EAN)	4050118306255	
Qty.	25 pc(s).	
Type	KWN-M8/-70 45	Version
Order No.	1496310000	cable lug, terminal end, 70 mm ²
GTIN (EAN)	4050118305944	
Qty.	25 pc(s).	
Type	KWN-M12/-70 45	Version
Order No.	1496330000	cable lug, terminal end, 70 mm ²
GTIN (EAN)	4050118305586	
Qty.	25 pc(s).	

70 mm²

The use of insulated connectors guarantees users consistent electrical connection quality in the long term.

- Wide range of insulated and non-insulated cable lugs and connectors
- Tubular cable lugs according to current market standards (Euroseries)
- Compression cable lugs acc. to DIN 46235
- Sheet metal cable lugs acc. to DIN 46234
- Insulated ring cable lugs to DIN 46237
- Insulated pin cable lugs to DIN 46231

General ordering data

Type	VSTN/-70	Version
Order No.	1494760000	cable lug, terminal end, 70 mm ² , 70 mm ²
GTIN (EAN)	4050118304299	
Qty.	50 pc(s).	

ES EPG/HPG 60 WM 70

Weidmüller Interface GmbH & Co. KG

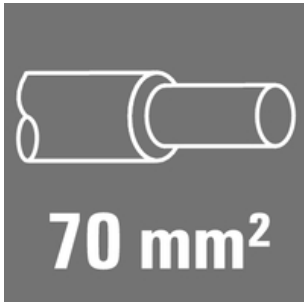
Klingenbergstraße 26

D-32758 Detmold

Germany

www.weidmueller.com

Accessories

70 mm²

The use of insulated connectors guarantees users consistent electrical connection quality in the long term.

- Wide range of insulated and non-insulated cable lugs and connectors
- Tubular cable lugs according to current market standards (Euroseries)
- Compression cable lugs acc. to DIN 46235
- Sheet metal cable lugs acc. to DIN 46234
- Insulated ring cable lugs to DIN 46237
- Insulated pin cable lugs to DIN 46231

General ordering data

Type	VPN/-70	Version
Order No.	1498670000	cable lug, terminal end, 70 mm ² , 70 mm ²
GTIN (EAN)	4050118308020	
Qty.	50 pc(s).	

70 mm²

The use of insulated connectors guarantees users consistent electrical connection quality in the long term.

- Wide range of insulated and non-insulated cable lugs and connectors
- Tubular cable lugs according to current market standards (Euroseries)
- Compression cable lugs acc. to DIN 46235
- Sheet metal cable lugs acc. to DIN 46234
- Insulated ring cable lugs to DIN 46237
- Insulated pin cable lugs to DIN 46231

General ordering data

Type	KWN-M16/-70 90	Version
Order No.	1496050000	cable lug, terminal end, 70 mm ²
GTIN (EAN)	4050118305708	
Qty.	25 pc(s).	
Type	KWN-M8/-70 90	Version
Order No.	1496020000	cable lug, terminal end, 70 mm ²
GTIN (EAN)	4050118305180	
Qty.	25 pc(s).	
Type	KWN-M14/-70 90	Version
Order No.	1494660000	cable lug, terminal end, 70 mm ²
GTIN (EAN)	4050118304183	
Qty.	25 pc(s).	
Type	KWN-M20/-70 90	Version
Order No.	1496070000	cable lug, terminal end, 70 mm ²
GTIN (EAN)	4050118305661	
Qty.	25 pc(s).	

ES EPG/HPG 60 WM 70

Weidmüller Interface GmbH & Co. KG

Klingenbergstraße 26

D-32758 Detmold

Germany

www.weidmueller.com

Accessories

Type	KWN-M12/-70 90	Version
Order No.	1496040000	cable lug, terminal end, 70 mm ²
GTIN (EAN)	4050118305463	
Qty.	25 pc(s).	
Type	KWN-M6/-70 90	Version
Order No.	1496010000	cable lug, terminal end, 70 mm ²
GTIN (EAN)	4050118305609	
Qty.	25 pc(s).	
Type	KWN-M10/-70 90	Version
Order No.	1496030000	cable lug, terminal end, 70 mm ²
GTIN (EAN)	4050118305432	
Qty.	25 pc(s).	

70 mm²

The use of insulated connectors guarantees users consistent electrical connection quality in the long term.

- Wide range of insulated and non-insulated cable lugs and connectors
- Tubular cable lugs according to current market standards (Euroseries)
- Compression cable lugs acc. to DIN 46235
- Sheet metal cable lugs acc. to DIN 46234
- Insulated ring cable lugs to DIN 46237
- Insulated pin cable lugs to DIN 46231

General ordering data

Type	KRN-M8/-70 S	Version
Order No.	1494860000	cable lug, terminal end, 70 mm ²
GTIN (EAN)	4050118304527	
Qty.	25 pc(s).	
Type	KRN-M12/-70 S	Version
Order No.	1494880000	cable lug, terminal end, 70 mm ²
GTIN (EAN)	4050118304435	
Qty.	25 pc(s).	
Type	KRN-M6/-70 S	Version
Order No.	1494850000	cable lug, terminal end, 70 mm ²
GTIN (EAN)	4050118304152	
Qty.	25 pc(s).	
Type	KRN-M10/-70 S	Version
Order No.	1494870000	cable lug, terminal end, 70 mm ²
GTIN (EAN)	4050118304503	
Qty.	25 pc(s).	

ES EPG/HPG 60 WM 70

Weidmüller Interface GmbH & Co. KG

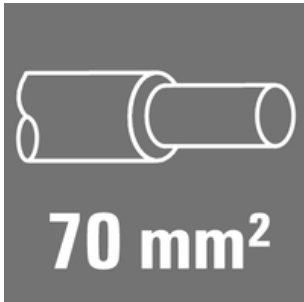
Klingenbergstraße 26

D-32758 Detmold

Germany

www.weidmueller.com

Accessories

70 mm²

The use of insulated connectors guarantees users consistent electrical connection quality in the long term.

- Wide range of insulated and non-insulated cable lugs and connectors
- Tubular cable lugs according to current market standards (Euroseries)
- Compression cable lugs acc. to DIN 46235
- Sheet metal cable lugs acc. to DIN 46234
- Insulated ring cable lugs to DIN 46237
- Insulated pin cable lugs to DIN 46231

General ordering data

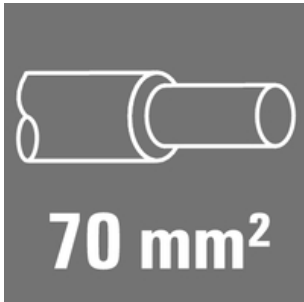
Type	KRN-M8/-70	Version
Order No.	1496650000	cable lug, terminal end, 70 mm ²
GTIN (EAN)	4050118305791	
Qty.	25 pc(s).	
Type	KRN-M12/-70	Version
Order No.	1495570000	cable lug, terminal end, 70 mm ²
GTIN (EAN)	4050118304992	
Qty.	25 pc(s).	
Type	KRN-M14/-70	Version
Order No.	1495770000	cable lug, terminal end, 70 mm ²
GTIN (EAN)	4050118305166	
Qty.	25 pc(s).	
Type	KRN-M6/-70	Version
Order No.	1496640000	cable lug, terminal end, 70 mm ²
GTIN (EAN)	4050118305951	
Qty.	25 pc(s).	
Type	KRN-M10/-70	Version
Order No.	1496670000	cable lug, terminal end, 70 mm ²
GTIN (EAN)	4050118305845	
Qty.	25 pc(s).	
Type	KRN-M20/-70	Version
Order No.	1495590000	cable lug, terminal end, 70 mm ²
GTIN (EAN)	4050118305302	
Qty.	25 pc(s).	
Type	KRN-M16/-70	Version
Order No.	1495580000	cable lug, terminal end, 70 mm ²
GTIN (EAN)	4050118305340	
Qty.	25 pc(s).	

ES EPG/HPG 60 WM 70**Weidmüller Interface GmbH & Co. KG**

Klingenbergstraße 26

D-32758 Detmold

Germany

www.weidmueller.com**Accessories****70 mm²**

The use of insulated connectors guarantees users consistent electrical connection quality in the long term.

- Wide range of insulated and non-insulated cable lugs and connectors
- Tubular cable lugs according to current market standards (Euroseries)
- Compression cable lugs acc. to DIN 46235
- Sheet metal cable lugs acc. to DIN 46234
- Insulated ring cable lugs to DIN 46237
- Insulated pin cable lugs to DIN 46231

General ordering data

Type	VPLN/-70	Version
Order No.	1492940000	cable lug, terminal end, 70 mm ² , 70 mm ²
GTIN (EAN)	4050118302738	
Qty.	100 pc(s).	

Tools

Crimping tools for cable lugs, connectors and wire-end ferrules with interchangeable inserts

- extremely fast processing thanks to hydraulic support
- large processing range up to 300 mm²
- 270° revolving quick-action crimping head
- automatic pressure limitation and monitoring via pressure sensor
- electronic control and monitoring of the crimping process
- Saving of all crimping cycles and error messages to internal memory
- Reading of all cycles and error messages via USB
- Li-ion rechargeable battery with charge status indicator: 18 V, 1.5 Ah

General ordering data

Type	EPG 60	Version
Order No.	2453810000	Pressing tools, Tools, Pressing tool, 6mm ² , 300mm ² , Hexagonal crimp,
GTIN (EAN)	4050118468434	WM crimp, Indent crimp, Trapezoidal crimp, Oval crimping
Qty.	1 pc(s).	

ES EPG/HPG 60 WM 70

Weidmüller Interface GmbH & Co. KG

Klingenbergstraße 26

D-32758 Detmold

Germany

www.weidmueller.com

Accessories

70 mm²

The use of insulated connectors guarantees users consistent electrical connection quality in the long term.

- Wide range of insulated and non-insulated cable lugs and connectors
- Tubular cable lugs according to current market standards (Euroseries)
- Compression cable lugs acc. to DIN 46235
- Sheet metal cable lugs acc. to DIN 46234
- Insulated ring cable lugs to DIN 46237
- Insulated pin cable lugs to DIN 46231

General ordering data

Type	KWPN-M8/-70 90	Version
Order No.	1497640000	cable lug, terminal end, 70 mm ²
GTIN (EAN)	4050118307047	
Qty.	25 pc(s).	
Type	KWPN-M12/-70 90	Version
Order No.	1497660000	cable lug, terminal end, 70 mm ²
GTIN (EAN)	4050118307092	
Qty.	25 pc(s).	
Type	KWPN-M10/-70 90	Version
Order No.	1497650000	cable lug, terminal end, 70 mm ²
GTIN (EAN)	4050118307177	
Qty.	25 pc(s).	
Type	KWPN-M16/-70 90	Version
Order No.	1497680000	cable lug, terminal end, 70 mm ²
GTIN (EAN)	4050118307122	
Qty.	25 pc(s).	

70 mm²

The use of insulated connectors guarantees users consistent electrical connection quality in the long term.

- Wide range of insulated and non-insulated cable lugs and connectors
- Tubular cable lugs according to current market standards (Euroseries)
- Compression cable lugs acc. to DIN 46235
- Sheet metal cable lugs acc. to DIN 46234
- Insulated ring cable lugs to DIN 46237
- Insulated pin cable lugs to DIN 46231

General ordering data

Type	VSTN/70	Version
Order No.	1493080000	cable lug, terminal end, 70 mm ² , 70 mm ²
GTIN (EAN)	4050118302967	
Qty.	50 pc(s).	