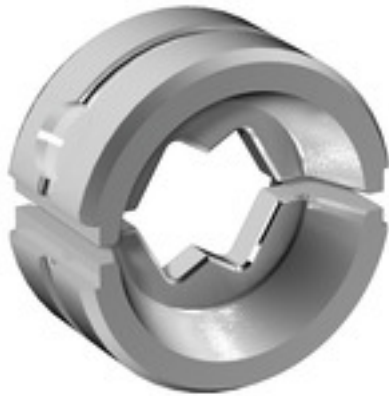


ES EPG/HPG 60 WM 50**Weidmüller Interface GmbH & Co. KG**

Klingenbergstraße 26

D-32758 Detmold

Germany

www.weidmueller.com**Similar to illustration****Crimping tools for cable lugs, connectors and wire-end ferrules with interchangeable inserts**

- extremely fast processing thanks to hydraulic support
- large processing range up to 300 mm²
- 270° revolving quick-action crimping head
- automatic pressure limitation and monitoring via pressure sensor
- electronic control and monitoring of the crimping process
- Saving of all crimping cycles and error messages to internal memory
- Reading of all cycles and error messages via USB
- Li-ion rechargeable battery with charge status indicator: 18 V, 2 Ah

General ordering data

Version	Crimping tool insert, WM crimp
Order No.	2469580000
Type	ES EPG/HPG 60 WM 50
GTIN (EAN)	4050118483864
Qty.	1 pc(s).

ES EPG/HPG 60 WM 50**Weidmüller Interface GmbH & Co. KG**

Klingenbergstraße 26

D-32758 Detmold

Germany

www.weidmueller.com**Technical data****Dimensions and weights**

Depth	22 mm	Depth (inches)	0.866 inch
Height	42 mm	Height (inches)	1.654 inch
Width	42 mm	Width (inches)	1.654 inch
Net weight	139 g		

Crimp inserts

Crimp cross-section copper	50	Crimping width	5 mm
Crimping width in mm	5		

Description of contact

Conductor cross-section, max. AWG	1	Type of contact	Euro series cable lug
-----------------------------------	---	-----------------	-----------------------

tool data crimping

Cable lug cross section	nominal	50 mm ²
Crimping type/profile	WM crimp	

Classifications

ETIM 6.0	EC001282	ETIM 7.0	EC001282
ETIM 8.0	EC001282	ETIM 9.0	EC001282
ECLASS 9.0	21-04-90-90	ECLASS 9.1	21-01-90-90
ECLASS 10.0	21-04-90-90	ECLASS 11.0	21-04-90-90
ECLASS 12.0	21-04-90-90	ECLASS 13.0	21-04-90-90

Downloads

Catalogues	Catalogues in PDF-format
------------	--

ES EPG/HPG 60 WM 50

Weidmüller Interface GmbH & Co. KG

Klingenbergstraße 26

D-32758 Detmold

Germany

www.weidmueller.com

Accessories

Tools

**Crimping tools for cable lugs, connectors and wire-end ferrules with interchangeable inserts**

- extremely fast processing thanks to hydraulic support
- large processing range up to 400 mm²
- 360° revolving quick action crimping head
- automatic pressure limitation and monitoring via pressure sensor
- Additional features for APG series:
- electronic control and monitoring of the crimping process
- Saving of all crimping cycles and error messages to internal memory
- Reading of all cycles and error messages via USB

General ordering data

Type	HPG 60	Version
Order No.	2453820000	6mm ² , 300mm ² , Hexagonal crimp, WM crimp, Indent crimp,
GTIN (EAN)	4050118468427	Trapezoidal crimp, Oval crimping
Qty.	1 pc(s).	

50 mm²**The use of insulated connectors guarantees users consistent electrical connection quality in the long term.**

- Wide range of insulated and non-insulated cable lugs and connectors
- Tubular cable lugs according to current market standards (Euroseries)
- Compression cable lugs acc. to DIN 46235
- Sheet metal cable lugs acc. to DIN 46234
- Insulated ring cable lugs to DIN 46237
- Insulated pin cable lugs to DIN 46231

General ordering data

Type	KQN-M20/-50	Version
Order No.	1493530000	cable lug, terminal end, 50 mm ²
GTIN (EAN)	4050118303513	
Qty.	50 pc(s).	
Type	KQN-M16/-50	Version
Order No.	1493180000	cable lug, terminal end, 50 mm ²
GTIN (EAN)	4050118302844	
Qty.	50 pc(s).	
Type	KQN-M12/-50	Version
Order No.	1493170000	cable lug, terminal end, 50 mm ²
GTIN (EAN)	4050118303216	
Qty.	50 pc(s).	
Type	KQN-M6/-50	Version
Order No.	1493510000	cable lug, terminal end, 50 mm ²
GTIN (EAN)	4050118303179	
Qty.	50 pc(s).	

ES EPG/HPG 60 WM 50

Weidmüller Interface GmbH & Co. KG

Klingenbergstraße 26

D-32758 Detmold

Germany

www.weidmueller.com

Accessories

Type	KQN-M8/-50	Version
Order No.	1493150000	cable lug, terminal end, 50 mm ²
GTIN (EAN)	4050118302868	
Qty.	50 pc(s).	
Type	KQN-M10/-50	Version
Order No.	1493160000	cable lug, terminal end, 50 mm ²
GTIN (EAN)	4050118303049	
Qty.	50 pc(s).	

Tools

**Crimping tools for cable lugs, connectors and wire-end ferrules with interchangeable inserts**

- extremely fast processing thanks to hydraulic support
- large processing range up to 300 mm²
- 270° revolving quick-action crimping head
- automatic pressure limitation and monitoring via pressure sensor
- electronic control and monitoring of the crimping process
- Saving of all crimping cycles and error messages to internal memory
- Reading of all cycles and error messages via USB
- Li-ion rechargeable battery with charge status indicator: 18 V, 2 Ah

General ordering data

Type	EPG 60	Version
Order No.	2453810000	Pressing tools, Tools, Pressing tool, 6mm ² , 300mm ² , Hexagonal crimp,
GTIN (EAN)	4050118468434	WM crimp, Indent crimp, Trapezoidal crimp, Oval crimping
Qty.	1 pc(s).	

50 mm²**The use of insulated connectors guarantees users consistent electrical connection quality in the long term.**

- Wide range of insulated and non-insulated cable lugs and connectors
- Tubular cable lugs according to current market standards (Euroseries)
- Compression cable lugs acc. to DIN 46235
- Sheet metal cable lugs acc. to DIN 46234
- Insulated ring cable lugs to DIN 46237
- Insulated pin cable lugs to DIN 46231

General ordering data

Type	KP-M20/-50	Version
Order No.	1498120000	cable lug, terminal end, 50 mm ²
GTIN (EAN)	4050118307597	
Qty.	100 pc(s).	

ES EPG/HPG 60 WM 50

Weidmüller Interface GmbH & Co. KG

Klingenbergstraße 26

D-32758 Detmold

Germany

www.weidmueller.com

Accessories

Type	KP-M6/-50	Version
Order No.	1498510000	cable lug, terminal end, 50 mm ²
GTIN (EAN)	4050118308006	
Qty.	100 pc(s).	
Type	KP-M10/-50	Version
Order No.	1498080000	cable lug, terminal end, 50 mm ²
GTIN (EAN)	4050118307559	
Qty.	100 pc(s).	
Type	KP-M16/-50	Version
Order No.	1498110000	cable lug, terminal end, 50 mm ²
GTIN (EAN)	4050118307474	
Qty.	100 pc(s).	
Type	KP-M8/-50	Version
Order No.	1498070000	cable lug, terminal end, 50 mm ²
GTIN (EAN)	4050118307566	
Qty.	100 pc(s).	
Type	KP-M14/-50	Version
Order No.	1498570000	cable lug, terminal end, 50 mm ²
GTIN (EAN)	4050118308105	
Qty.	100 pc(s).	
Type	KP-M12/-50	Version
Order No.	1498090000	cable lug, terminal end, 50 mm ²
GTIN (EAN)	4050118307375	
Qty.	100 pc(s).	

50 mm²

The use of insulated connectors guarantees users consistent electrical connection quality in the long term.

- Wide range of insulated and non-insulated cable lugs and connectors
- Tubular cable lugs according to current market standards (Euroseries)
- Compression cable lugs acc. to DIN 46235
- Sheet metal cable lugs acc. to DIN 46234
- Insulated ring cable lugs to DIN 46237
- Insulated pin cable lugs to DIN 46231

General ordering data

Type	VSTN/-50	Version
Order No.	1494750000	cable lug, terminal end, 50 mm ² , 50 mm ²
GTIN (EAN)	4050118304381	
Qty.	50 pc(s).	

ES EPG/HPG 60 WM 50

Weidmüller Interface GmbH & Co. KG

Klingenbergstraße 26

D-32758 Detmold

Germany

www.weidmueller.com

Accessories

50 mm²

The use of insulated connectors guarantees users consistent electrical connection quality in the long term.

- Wide range of insulated and non-insulated cable lugs and connectors
- Tubular cable lugs according to current market standards (Euroseries)
- Compression cable lugs acc. to DIN 46235
- Sheet metal cable lugs acc. to DIN 46234
- Insulated ring cable lugs to DIN 46237
- Insulated pin cable lugs to DIN 46231

General ordering data

Type	KRN-M14/-50	Version
Order No.	1495750000	cable lug, terminal end, 50 mm ²
GTIN (EAN)	4050118305197	
Qty.	100 pc(s).	
Type	KRN-M16/-50	Version
Order No.	1496630000	cable lug, terminal end, 50 mm ²
GTIN (EAN)	4050118306200	
Qty.	100 pc(s).	
Type	KRN-M20/-50	Version
Order No.	1495840000	cable lug, terminal end, 50 mm ²
GTIN (EAN)	4050118305364	
Qty.	100 pc(s).	
Type	KRN-M6/-50	Version
Order No.	1496590000	cable lug, terminal end, 50 mm ²
GTIN (EAN)	4050118305746	
Qty.	100 pc(s).	
Type	KRN-M12/-50	Version
Order No.	1496620000	cable lug, terminal end, 50 mm ²
GTIN (EAN)	4050118305722	
Qty.	100 pc(s).	
Type	KRN-M8/-50	Version
Order No.	1496600000	cable lug, terminal end, 50 mm ²
GTIN (EAN)	4050118306149	
Qty.	100 pc(s).	
Type	KRN-M10/-50	Version
Order No.	1496610000	cable lug, terminal end, 50 mm ²
GTIN (EAN)	4050118306064	
Qty.	100 pc(s).	

ES EPG/HPG 60 WM 50

Weidmüller Interface GmbH & Co. KG

Klingenbergstraße 26

D-32758 Detmold

Germany

www.weidmueller.com

Accessories

50 mm²

The use of insulated connectors guarantees users consistent electrical connection quality in the long term.

- Wide range of insulated and non-insulated cable lugs and connectors
- Tubular cable lugs according to current market standards (Euroseries)
- Compression cable lugs acc. to DIN 46235
- Sheet metal cable lugs acc. to DIN 46234
- Insulated ring cable lugs to DIN 46237
- Insulated pin cable lugs to DIN 46231

General ordering data

Type	KSN/-50	Version
Order No.	1492820000	cable lug, terminal end, 50 mm ² , 50 mm ²
GTIN (EAN)	4050118302769	
Qty.	50 pc(s).	

50 mm²

The use of insulated connectors guarantees users consistent electrical connection quality in the long term.

- Wide range of insulated and non-insulated cable lugs and connectors
- Tubular cable lugs according to current market standards (Euroseries)
- Compression cable lugs acc. to DIN 46235
- Sheet metal cable lugs acc. to DIN 46234
- Insulated ring cable lugs to DIN 46237
- Insulated pin cable lugs to DIN 46231

General ordering data

Type	KWN-M6/-50 90	Version
Order No.	1495950000	cable lug, terminal end, 50 mm ²
GTIN (EAN)	4050118305388	
Qty.	100 pc(s).	
Type	KWN-M8/-50 90	Version
Order No.	1495970000	cable lug, terminal end, 50 mm ²
GTIN (EAN)	4050118305425	
Qty.	100 pc(s).	
Type	KWN-M10/-50 90	Version
Order No.	1495980000	cable lug, terminal end, 50 mm ²
GTIN (EAN)	4050118305494	
Qty.	100 pc(s).	
Type	KWN-M16/-50 90	Version
Order No.	1496000000	cable lug, terminal end, 50 mm ²
GTIN (EAN)	4050118305630	
Qty.	100 pc(s).	

ES EPG/HPG 60 WM 50

Weidmüller Interface GmbH & Co. KG

Klingenbergstraße 26

D-32758 Detmold

Germany

www.weidmueller.com

Accessories

Type	KWN-M20/-50 90	Version
Order No.	1494710000	cable lug, terminal end, 50 mm ²
GTIN (EAN)	4050118304442	
Qty.	100 pc(s).	
Type	KWN-M12/-50 90	Version
Order No.	1495990000	cable lug, terminal end, 50 mm ²
GTIN (EAN)	4050118305654	
Qty.	100 pc(s).	
Type	KWN-M14/50 90	Version
Order No.	1494650000	cable lug, terminal end, 50 mm ²
GTIN (EAN)	4050118304251	
Qty.	100 pc(s).	

50 mm²

The use of insulated connectors guarantees users consistent electrical connection quality in the long term.

- Wide range of insulated and non-insulated cable lugs and connectors
- Tubular cable lugs according to current market standards (Euroseries)
- Compression cable lugs acc. to DIN 46235
- Sheet metal cable lugs acc. to DIN 46234
- Insulated ring cable lugs to DIN 46237
- Insulated pin cable lugs to DIN 46231

General ordering data

Type	KWPN-M12/-50 90	Version
Order No.	1497620000	cable lug, terminal end, 50 mm ²
GTIN (EAN)	4050118306675	
Qty.	100 pc(s).	
Type	KWPN-M10/-50 90	Version
Order No.	1497610000	cable lug, terminal end, 50 mm ²
GTIN (EAN)	4050118307078	
Qty.	100 pc(s).	
Type	KWPN-M8/-50 90	Version
Order No.	1497590000	cable lug, terminal end, 50 mm ²
GTIN (EAN)	4050118306699	
Qty.	100 pc(s).	
Type	KWPN-M16/-50 90	Version
Order No.	1497630000	cable lug, terminal end, 50 mm ²
GTIN (EAN)	4050118307115	
Qty.	100 pc(s).	

ES EPG/HPG 60 WM 50

Weidmüller Interface GmbH & Co. KG

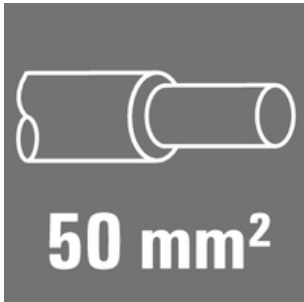
Klingenbergstraße 26

D-32758 Detmold

Germany

www.weidmueller.com

Accessories

50 mm²

The use of insulated connectors guarantees users consistent electrical connection quality in the long term.

- Wide range of insulated and non-insulated cable lugs and connectors
- Tubular cable lugs according to current market standards (Euroseries)
- Compression cable lugs acc. to DIN 46235
- Sheet metal cable lugs acc. to DIN 46234
- Insulated ring cable lugs to DIN 46237
- Insulated pin cable lugs to DIN 46231

General ordering data

Type	KWN-M12/-50 45	Version
Order No.	1496300000	cable lug, terminal end, 50 mm ²
GTIN (EAN)	4050118306040	
Qty.	50 pc(s).	
Type	KWN-M10/-50 45	Version
Order No.	1496290000	cable lug, terminal end, 50 mm ²
GTIN (EAN)	4050118305760	
Qty.	50 pc(s).	
Type	KWN-M8/-50 45	Version
Order No.	1496280000	cable lug, terminal end, 50 mm ²
GTIN (EAN)	4050118306101	
Qty.	50 pc(s).	
Type	KWN-M6/-50 45	Version
Order No.	1496270000	cable lug, terminal end, 50 mm ²
GTIN (EAN)	4050118305937	
Qty.	50 pc(s).	

50 mm²

The use of insulated connectors guarantees users consistent electrical connection quality in the long term.

- Wide range of insulated and non-insulated cable lugs and connectors
- Tubular cable lugs according to current market standards (Euroseries)
- Compression cable lugs acc. to DIN 46235
- Sheet metal cable lugs acc. to DIN 46234
- Insulated ring cable lugs to DIN 46237
- Insulated pin cable lugs to DIN 46231

General ordering data

Type	KRN-M8/-50 S	Version
Order No.	1494830000	cable lug, terminal end, 50 mm ²
GTIN (EAN)	4050118304404	
Qty.	25 pc(s).	

ES EPG/HPG 60 WM 50

Weidmüller Interface GmbH & Co. KG

Klingenbergstraße 26

D-32758 Detmold

Germany

www.weidmueller.com

Accessories

Type	KRN-M6/-50 S	Version
Order No.	1494820000	cable lug, terminal end,50 mm ²
GTIN (EAN)	4050118304114	
Qty.	25 pc(s).	

Type	KRN-M10/-50 S	Version
Order No.	1494840000	cable lug, terminal end,50 mm ²
GTIN (EAN)	4050118304619	
Qty.	25 pc(s).	

50 mm²

The use of insulated connectors guarantees users consistent electrical connection quality in the long term.

- Wide range of insulated and non-insulated cable lugs and connectors
- Tubular cable lugs according to current market standards (Euroseries)
- Compression cable lugs acc. to DIN 46235
- Sheet metal cable lugs acc. to DIN 46234
- Insulated ring cable lugs to DIN 46237
- Insulated pin cable lugs to DIN 46231

General ordering data

Type	VSTN/50	Version
Order No.	1493070000	cable lug, terminal end,50 mm ² ,50 mm ²
GTIN (EAN)	4050118302691	
Qty.	100 pc(s).	

50 mm²

The use of insulated connectors guarantees users consistent electrical connection quality in the long term.

- Wide range of insulated and non-insulated cable lugs and connectors
- Tubular cable lugs according to current market standards (Euroseries)
- Compression cable lugs acc. to DIN 46235
- Sheet metal cable lugs acc. to DIN 46234
- Insulated ring cable lugs to DIN 46237
- Insulated pin cable lugs to DIN 46231

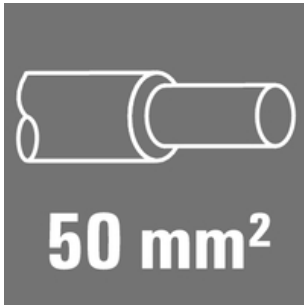
General ordering data

Type	VPN/-50	Version
Order No.	1498660000	cable lug, terminal end,50 mm ² ,50 mm ²
GTIN (EAN)	4050118307948	
Qty.	50 pc(s).	

ES EPG/HPG 60 WM 50

Weidmüller Interface GmbH & Co. KG
Klingenbergstraße 26
D-32758 Detmold
Germany

www.weidmueller.com

Accessories**50 mm²**

The use of insulated connectors guarantees users consistent electrical connection quality in the long term.

- Wide range of insulated and non-insulated cable lugs and connectors
- Tubular cable lugs according to current market standards (Euroseries)
- Compression cable lugs acc. to DIN 46235
- Sheet metal cable lugs acc. to DIN 46234
- Insulated ring cable lugs to DIN 46237
- Insulated pin cable lugs to DIN 46231

General ordering data

Type	VPLN/-50	Version
Order No.	1492930000	cable lug, terminal end, 50 mm ² , 50 mm ²
GTIN (EAN)	4050118302684	
Qty.	100 pc(s).	