

**ACT20X-2SAI-2HAO-P****Weidmüller Interface GmbH & Co. KG**

Klingenbergstraße 26

D-32758 Detmold

Germany

www.weidmueller.com

**Product image, Similar to illustration**

The ACT20X-SAI-HAO/2SAI-2HAO current output isolators are suitable for controlling field devices in Ex areas, up to Zone 0.

The input/output-side HART protocol transparent signal connection is implemented using 4 to 20 mA current loops.

Integrated alarm contacts issue an alert in the event of a malfunction; this makes troubleshooting easier and increases system availability.

The rail-mounted current output isolators are optionally available in one- or two-channel versions.

With 11 mm width per channel, the devices need little space in the electrical cabinet.

**General ordering data**

Version	EX signal isolating converter, HART® transparency, 2-channel, Safe-input: 4-20mA, Ex output: 4 - 20 mA
Order No.	<a href="#">2456170000</a>
Type	ACT20X-2SAI-2HAO-P
GTIN (EAN)	4050118471571
Qty.	1 pc(s).

**ACT20X-2SAI-2HAO-P****Weidmüller Interface GmbH & Co. KG**

Klingenbergstraße 26

D-32758 Detmold

Germany

www.weidmueller.com

**Technical data****Dimensions and weights**

Depth	114.6 mm	Depth (inches)	4.512 inch
Height	127.3 mm	Height (inches)	5.012 inch
Width	22.5 mm	Width (inches)	0.886 inch
Net weight	212 g		

**Temperatures**

Storage temperature	-20 °C...85 °C	Operating temperature	-20 °C...60 °C
Humidity	0...95 % (no condensation)		

**Probability of failure**

SIL PAPER	SIL certificate	SIL in compliance with IEC 61508	2
MTBF	135 a		

**Assembling**

Mounting position	horizontal or vertical	Rail	TS 35
Type of mounting	TS 35		

**Input**

Input current	4...20mA	Number of inputs	2
Voltage drop	<2 V		

**Output**

2-wire supply	> 14.5 V @ 20 mA	Influence of load resistance	≤ 0.01% of span / 100 Ω
Load impedance current	≤ 725 Ω	Output current	4...20 mA (max. 23 mA)
Output signal limit	<28 mA	Residual ripple (current loop)	<7.5 mV <sub>eff</sub>
Type	intrinsically safe circuit		

**Digital output**

Max. switching frequency	0 Hz		
--------------------------	------	--	--

**Alarm output**

Alarm function	Signal limit exceeded, Line interruption at the input, No supply voltage, Device error	Continuous current	≤ 0.5 A AC / 0.3 A DC (safe zone), ≤ 0.5 A AC / 1 A DC (zone 2)
Hysteresis	0.1 mA (switching threshold)	Nominal switching voltage	≤ 125 V AC / 110 V DC (safe area) ≤ 32 V AC / 32 V DC (zone 2)
Power rating	≤ 62.5 VA / 32 W (safe area) ≤ 16 VA / 32 W (Zone 2)	Switching thresholds	0...29.9 mA (programmable)
Type	Status relay, 1 NC (voltage-free)		

**ACT20X-2SAI-2HAO-P****Weidmüller Interface GmbH & Co. KG**

Klingenbergstraße 26

D-32758 Detmold

Germany

www.weidmueller.com

**Technical data****General specifications**

Accuracy		Configuration	With FDT/DTM software, Requires configuration adapter 8978580000 CBX200 USB
	<0.1% span		
HART® transparency supported	Yes	Humidity	0...95 % (no condensation)
Operating altitude	≤ 2000 m	Power consumption	≤ 1.8 W
Protection degree	IP20	Step response time	≤ 5 ms
Temperature coefficient	<0.01% of span/°C (TU)	Type of connection	PUSH IN
Type of signal forwarding according to HART®	unchanged	Voltage supply	19.2...31.2 V DC

**Insulation coordination**

EMC standards	EN 61326-1	Insulation voltage	2.6 kV (input / output)
Rated voltage	300 V	Standards	EN 61010-1

**Data for Ex applications (ATEX)**

Current I <sub>0</sub>	93 mA	Installation location	Device installed in safe area, zone 2
Marking	II (1) G [Ex ia Ga] IIC/IIB/ IIA, II (1) D [Ex ia Da] IIIC, I (M1) [Ex ia Ma] I	Power P <sub>0</sub>	<650 mW
Voltage U <sub>0</sub>	28 V DC		

**Safety-related basic specifications**

Description of the "safe state"	analogue Output ≤ 3.6 mA or output ≥ 21 mA	Device type	A
T <sub>proof</sub>	5 a	Total failure rate for safe detected failures (λ <sub>SD</sub> )	0 FIT
Hardware fault tolerance (HFT)	0	Safety category	SIL 2
Safe Failure Fraction (SFF)	85 %	Mean Time To Repair (MTTR)	24 h
Total failure rate for safe undetected fail- ures (λ <sub>SU</sub> )	164 FIT	Total failure rate for dangerous detected failures (λ <sub>DD</sub> )	127 FIT
Total failure rate for dangerous undetect- ed failures (λ <sub>DU</sub> )	48 FIT	Probability of outage PFH	4.8 x 10 <sup>-8</sup> h <sup>-1</sup>
Demand mode	High		

**Safety-related specifications Low demand mode**

Average Probability of Failure on De- mand (PFD <sub>avg</sub> )	2.29 x 10 <sup>-4</sup> (T <sub>proof</sub> = 1 year), 4.37 x 10 <sup>-4</sup> (T <sub>proof</sub> = 2 years), 1.06 x 10 <sup>-4</sup> (T <sub>proof</sub> = 5 year)
---	---

**ACT20X-2SAI-2HAO-P****Weidmüller Interface GmbH & Co. KG**

Klingenbergstraße 26

D-32758 Detmold

Germany

www.weidmueller.com

**Technical data****Connection data**

Type of connection	PUSH IN	Wire connection cross section AWG, min.	AWG 26
Wire connection cross section AWG, max.	AWG 14	Wire cross-section, solid, min.	0.2 mm <sup>2</sup>
Wire cross-section, solid, max.	2.5 mm <sup>2</sup>	Wire connection cross section, finely stranded, min.	0.2 mm <sup>2</sup>
Wire connection cross section, finely stranded, max.	2.5 mm <sup>2</sup>	Wire connection cross-section, finely stranded with wire-end ferrules DIN 46228/4, min.	0.2 mm <sup>2</sup>
Wire connection cross-section, finely stranded with wire-end ferrules DIN 46228/4, max.	2.5 mm <sup>2</sup>		

**Guarantee**

Time interval	3 years
---------------	---------

**Classifications**

ETIM 6.0	EC002653	ETIM 7.0	EC002653
ETIM 8.0	EC002653	ETIM 9.0	EC002653
ETIM 10.0	EC002653	ECLASS 9.0	27-21-01-20
ECLASS 9.1	27-21-01-20	ECLASS 10.0	27-21-01-20
ECLASS 11.0	27-21-01-20	ECLASS 12.0	27-21-01-20
ECLASS 13.0	27-21-01-20	ECLASS 14.0	27-21-01-20
ECLASS 15.0	27-21-01-20		

**Approvals**

Approvals



Approvals MAMID	<a href="https://mdcop.weidmueller.com/mediadelivery/rendition/900_319222/-T1z1mm-S800/">https://mdcop.weidmueller.com/mediadelivery/rendition/900_319222/-T1z1mm-S800/</a> <a href="https://mdcop.weidmueller.com/mediadelivery/rendition/900_319228/-T1z1mm-S800/">https://mdcop.weidmueller.com/mediadelivery/rendition/900_319228/-T1z1mm-S800/</a> <a href="https://mdcop.weidmueller.com/mediadelivery/rendition/900_319213/-T1z1mm-S800/">https://mdcop.weidmueller.com/mediadelivery/rendition/900_319213/-T1z1mm-S800/</a> <a href="https://mdcop.weidmueller.com/mediadelivery/rendition/900_319234/-T1z1mm-S800/">https://mdcop.weidmueller.com/mediadelivery/rendition/900_319234/-T1z1mm-S800/</a> <a href="https://mdcop.weidmueller.com/mediadelivery/rendition/900_319240/-T1z1mm-S800/">https://mdcop.weidmueller.com/mediadelivery/rendition/900_319240/-T1z1mm-S800/</a>
ROHS	Conform
UL File Number Search	UL Website
Certificate no. (cULus)	E337701

**Environmental Product Compliance**

RoHS Compliance Status	Compliant with exemption
RoHS Exemption (if applicable/known)	7a, 7cl
REACH SVHC	Lead 7439-92-1
SCIP	2f6dd957-421a-46db-a0c2-cf1609156924

## ACT20X-2SAI-2HAO-P

**Weidmüller Interface GmbH & Co. KG**  
Klingenbergstraße 26  
D-32758 Detmold  
Germany

[www.weidmueller.com](http://www.weidmueller.com)

## Technical data

### Downloads

Approval/Certificate/Document of Conformity	<a href="#">Application notes – Certification SIL</a> <a href="#">Certification DNV GL</a> <a href="#">Application notes – Certification ATEX</a> <a href="#">Application notes – Certification IECEx</a> <a href="#">Application notes – Certification UL</a> <a href="#">Declaration of Conformity</a>
Engineering Data	<a href="#">CAD data – STEP</a>
Software	<a href="#">WI-Manager, DTM-Library for online installation</a> <a href="#">Release notes for Weidmueller FDT-DTM Software version</a>
User Documentation	<a href="#">Instruction sheet</a> <a href="#">Safety Manual for SIL application</a> <a href="#">Handbuch ACT20X- Serie, deutsch</a> <a href="#">Manual ACT20X- series, english</a> <a href="#">20210120 Security Advisory - WI-Manager affected by MundM Software fdtCONTAINER vulnerability</a>
Catalogues	<a href="#">Catalogues in PDF-format</a>

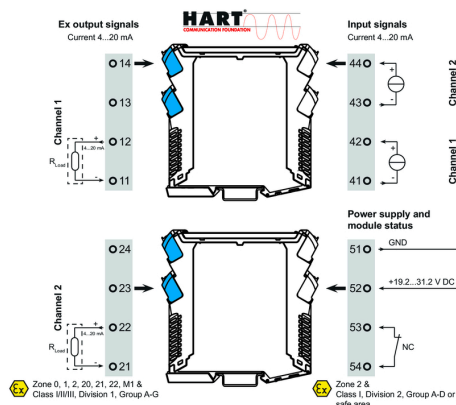
# ACT20X-2SAI-2HAO-P

**Weidmüller Interface GmbH & Co. KG**  
 Klingenbergstraße 26  
 D-32758 Detmold  
 Germany

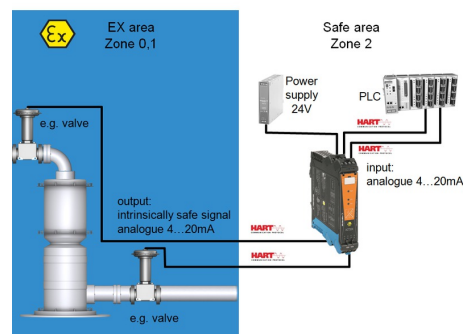
www.weidmueller.com

## Drawings

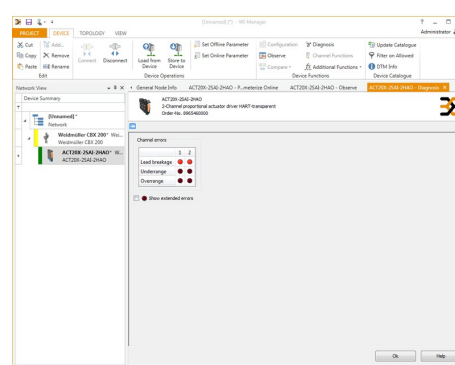
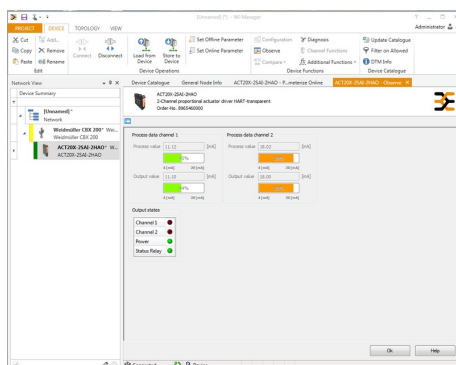
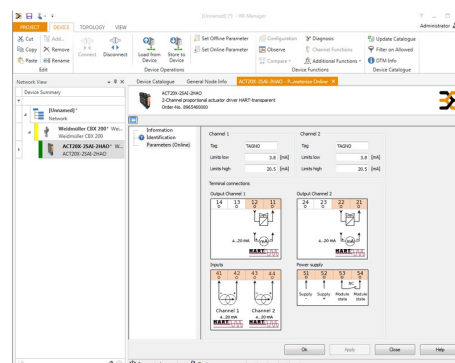
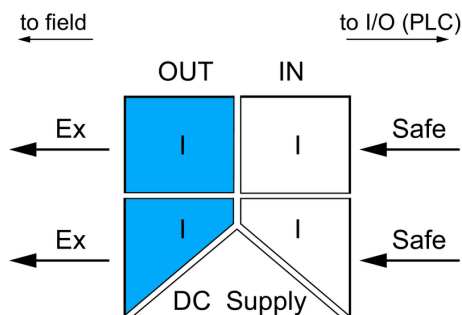
### Connection diagram



### Application



### Block diagram

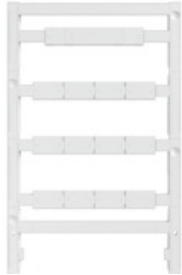


**ACT20X-2SAI-2HAO-P****Weidmüller Interface GmbH & Co. KG**

Klingenbergstraße 26

D-32758 Detmold

Germany

[www.weidmueller.com](http://www.weidmueller.com)**Accessories****Blank**

ESG is the tried-and-tested marker in MultiCard format for use on many well-known electrical devices. The result is high-quality device marking with a high-contrast appearance.

Various types are available for devices from manufacturers like Siemens, ABB, Beckhoff etc.

Advantages at a glance:

- Tags for universal usage, self-adhesive or clip-on tags, depending on type
- For aligned equipment, e.g. circuit breakers, we supply ESG markers for clipping onto tag rails
- Individual laser-quality printing according to specifications

**For custom printing:** Please send us a file of our labeling software M-Print PRO or M-Print PRO Online (without installation) for your labeling specifications.

**General ordering data**

Type	ESG 8/13.5/43.3 SAI AU	Version
Order No.	<a href="#">1912130000</a>	ESG, Device markers x 13.5 mm, PA 66, Colour: Transparent,
GTIN (EAN)	4032248541164	pluggable
Qty.	5 pc(s).	

**Configuration interfaces****General ordering data**

Type	CBX200 USB
Order No.	<a href="#">8978580000</a>
GTIN (EAN)	4032248813759
Qty.	1 pc(s).

**ACT20X-2SAI-2HAO-P****Weidmüller Interface GmbH & Co. KG**

Klingenbergstraße 26

D-32758 Detmold

Germany

[www.weidmueller.com](http://www.weidmueller.com)**Accessories****Blank**

ESG is the tried-and-tested marker in MultiCard format for use on many well-known electrical devices. The result is high-quality device marking with a high-contrast appearance.

Various types are available for devices from manufacturers like Siemens, ABB, Beckhoff etc.

Advantages at a glance:

- Tags for universal usage, self-adhesive or clip-on tags, depending on type
- For aligned equipment, e.g. circuit breakers, we supply ESG markers for clipping onto tag rails
- Individual laser-quality printing according to specifications

**For custom printing:** Please send us a file of our labeling software M-Print PRO or M-Print PRO Online (without installation) for your labeling specifications.

**General ordering data**

Type	ESG 6.6/20 BHZ 5.00/04	Version
Order No.	<a href="#">1082540000</a>	ESG, Device markers x 20 mm, PA 66, Colour: white, pluggable
GTIN (EAN)	4032248845439	
Qty.	200 pc(s).	



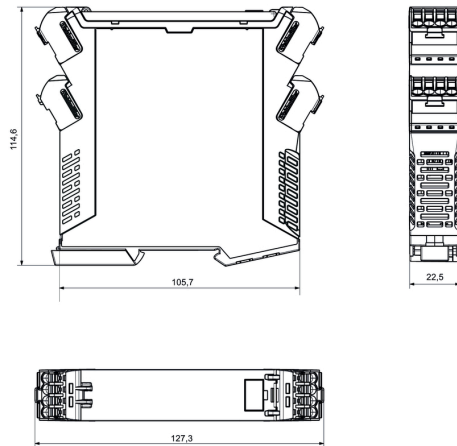
## ACT20X-2SAI-2HAO-P

**Weidmüller Interface GmbH & Co. KG**  
Klingenbergstraße 26  
D-32758 Detmold  
Germany

[www.weidmueller.com](http://www.weidmueller.com)

## Drawings

### Dimensioned drawing



Removable terminals with coding