

ACT20C-CML-10-AO-RC-S**Weidmüller Interface GmbH & Co. KG**

Klingenbergstraße 26

D-32758 Detmold

Germany

www.weidmueller.com**Product image**

The ACT20C series was especially developed for applications with continuous processes. It enables the continuous monitoring of diagnostic, device and process information ("condition monitoring").

Several ACT20C components form a station which consists of an ACT20C Ethernet gateway, communicative ACT20C signal converters and an ACT20C bus termination terminal.

General ordering data

Version	Current-measuring transducer, Input : 0...5/10 A, Output : 0(4)-20 mA, 0-10 V, Relay
Order No.	2044840000
Type	ACT20C-CML-10-AO-RC-S
GTIN (EAN)	4050118409826
Qty.	1 pc(s).

ACT20C-CML-10-AO-RC-S**Weidmüller Interface GmbH & Co. KG**

Klingenbergstraße 26

D-32758 Detmold

Germany

www.weidmueller.com

Technical data**Dimensions and weights**

Depth	113.6 mm	Depth (inches)	4.472 inch
Height	117.2 mm	Height (inches)	4.614 inch
Width	17.5 mm	Width (inches)	0.689 inch
Net weight	134 g		

Temperatures

Storage temperature	-40 °C...85 °C	Humidity	5...95 %, no condensation
---------------------	----------------	----------	---------------------------

Probability of failure

SIL in compliance with IEC 61508	None	MTTF	130 a
----------------------------------	------	------	-------

Communication

Configuration	for thresholds (overcurrent / undercurrent), delay and hysteresis, via gateway (ACT20C-GTW-100-MTCP-S), With FDT/DTM software, DIP switch and potentiometer
---------------	---

Input

Input frequency	AC: 15...400 Hz (true root mean square), AC: 50 Hz (arithmetic average)	Input measurement range	configurable, 0...1/5/10 A AC (RMS) or DC
Input signal	Power cable can be connected to the terminals		

Output

Load impedance current	≤ 600 Ω
------------------------	---------

Output (digital)

Max. switching voltage, AC	250 V	Max. switching voltage, DC	24 V
Rated switching current	2 A	Type	Relay, 1 CO contact, Process alarms (4x) with hysteresis, with alarm delay (configurable) 0...180 s

Output (analogue)

Load resistance current	≤ 600 Ω	Load resistance voltage	≥ 10 kΩ
Output current	Adjustable, 0...20 mA, 4...20 mA, -20...+20 mA	Output voltage	Adjustable, 0...10 V, 2...10 V, 0...5 V, 1...5 V, -5...+5 V, -10...+10 V
Type (analogue output)	Voltage and current output (configurable)		

alarm output

Switching current	5 A
-------------------	-----

ACT20C-CML-10-AO-RC-S

Weidmüller Interface GmbH & Co. KG

Klingenbergstraße 26

D-32758 Detmold

Germany

www.weidmueller.com

Technical data

General data

Accuracy		Configuration	for thresholds (overcurrent / undercurrent), delay and hysteresis, via gateway (ACT20C-GTW-100-MTCP-S), With FDT/DTM software, DIP switch and potentiometer
	$\leq \pm 0.3 \% @ 1 \text{ A} / 5 \text{ A}, \leq \pm 0.6 \% @ 10 \text{ A}$		
Galvanic isolation	4-way isolator, between input / output / supply / relay	Power consumption, max.	2.2 W
Rail	TS 35	Step response time	$\leq 300 \text{ ms (RMS)}, \leq 60 \text{ ms (AA)}$
Temperature coefficient	$\leq \pm 100 \text{ ppm/K @ } -25 \dots +55 \text{ }^\circ\text{C}, \leq \pm 200 \text{ ppm/K @ } +55 \dots +70 \text{ }^\circ\text{C}$	Voltage supply	24 V DC $\pm 30 \%$

Insulation coordination

EMC standards	IEC 61326-1	Galvanic isolation	4-way isolator, between input / output / supply / relay
Impulse withstand voltage	6 kV (1.2/50 μs)	Pollution severity	2
Rated voltage	300 V AC _{rms}	Surge voltage category	III
Test voltage	4 kV		

Connection data

Type of connection	Screw connection	Tightening torque, min.	0.5 Nm
Tightening torque, max.	3.5 Nm	Clamping range, rated connection	1.5 mm ²
Clamping range, min.	0.5 mm ²	Clamping range, max.	2.5 mm ²
Wire connection cross section AWG, min.	AWG 30	Wire connection cross section AWG, max.	AWG 14
Wire cross-section, solid, min.	0.5 mm ²	Wire cross-section, solid, max.	2.5 mm ²

Classifications

ETIM 6.0	EC002475	ETIM 7.0	EC002475
ETIM 8.0	EC002475	ETIM 9.0	EC002475
ECLASS 9.0	27-21-01-23	ECLASS 9.1	27-21-01-23
ECLASS 10.0	27-21-01-23	ECLASS 11.0	27-21-01-23
ECLASS 12.0	27-21-01-23	ECLASS 13.0	27-21-01-23

Environmental Product Compliance

REACH SVHC	Lead 7439-92-1
SCIP	2f6dd957-421a-46db-a0c2-cf1609156924

ACT20C-CML-10-AO-RC-S**Weidmüller Interface GmbH & Co. KG**

Klingenbergstraße 26

D-32758 Detmold

Germany

www.weidmueller.com**Technical data****Approvals**

Approvals



ROHS	Conform
UL File Number Search	UL Website
Certificate no. (cULus)	E141197

Downloads

Approval/Certificate/Document of Conformity	Certification DNV GL Certification UL Application notes – Declaration of Conformity
Engineering Data	CAD data – STEP
Software	WI-Manager, DTM-Library for online installation Release notes for Weidmueller FDT-DTM Software version
User Documentation	Application notes – Instruction sheet Application notes – Manual
Catalogues	Catalogues in PDF-format

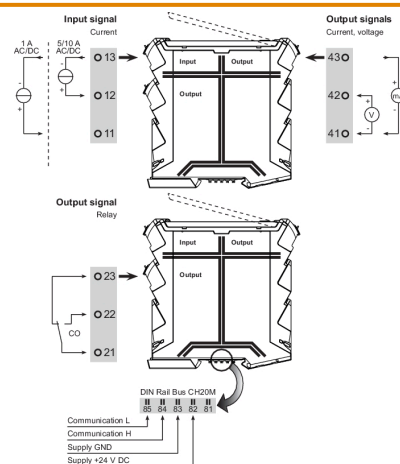
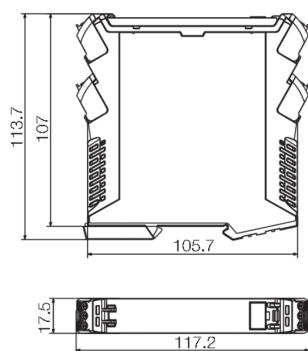
ACT20C-CML-10-AO-RC-S

Weidmüller Interface GmbH & Co. KG
Klingenbergstraße 26
D-32758 Detmold
Germany

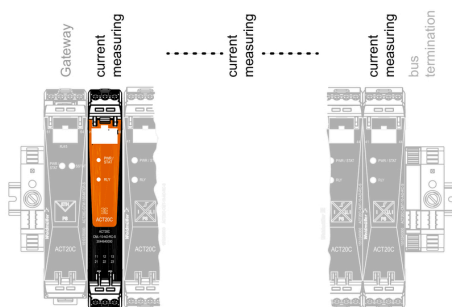
www.weidmueller.com

Drawings

Dimensioned drawing



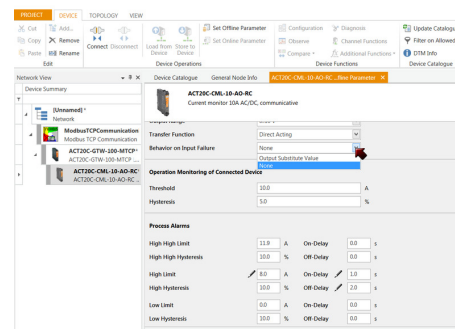
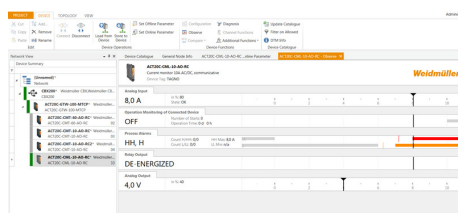
ACT20C-CML-10-AO-RC-S is part of the
ACT20C- Station



Configuration

User address	DIP switch S1					
	1	2	3	4	5	6
2						
3						
4						
5						
6						
7						
8						
...						
16						
...						
32						
33						

■ = ON



ACT20C-CML-10-AO-RC-S

Weidmüller Interface GmbH & Co. KG
Klingenbergstraße 26
D-32758 Detmold
Germany

www.weidmueller.com

Drawings